

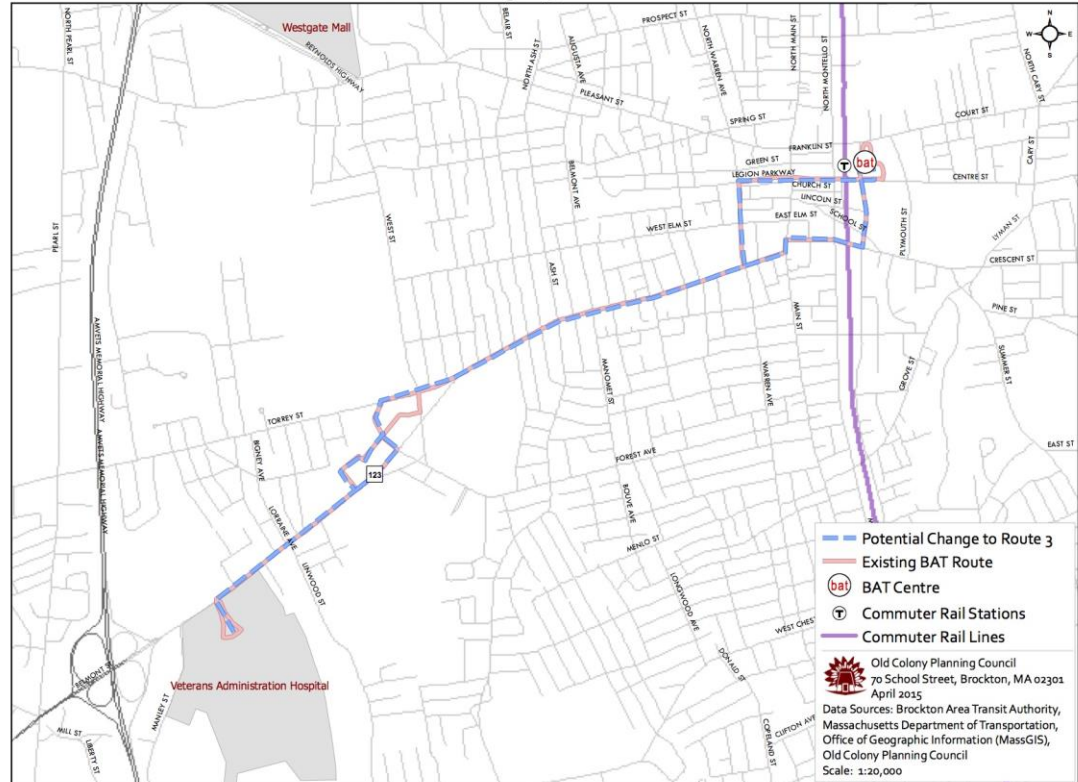
Brockton Area Transit Authority Comprehensive Regional Transportation Plan (CRTP)

Preliminary Service Recommendation



Route 3:VA Hospital Via Belmont

Brockton Area Transit Potential Route Change: 3

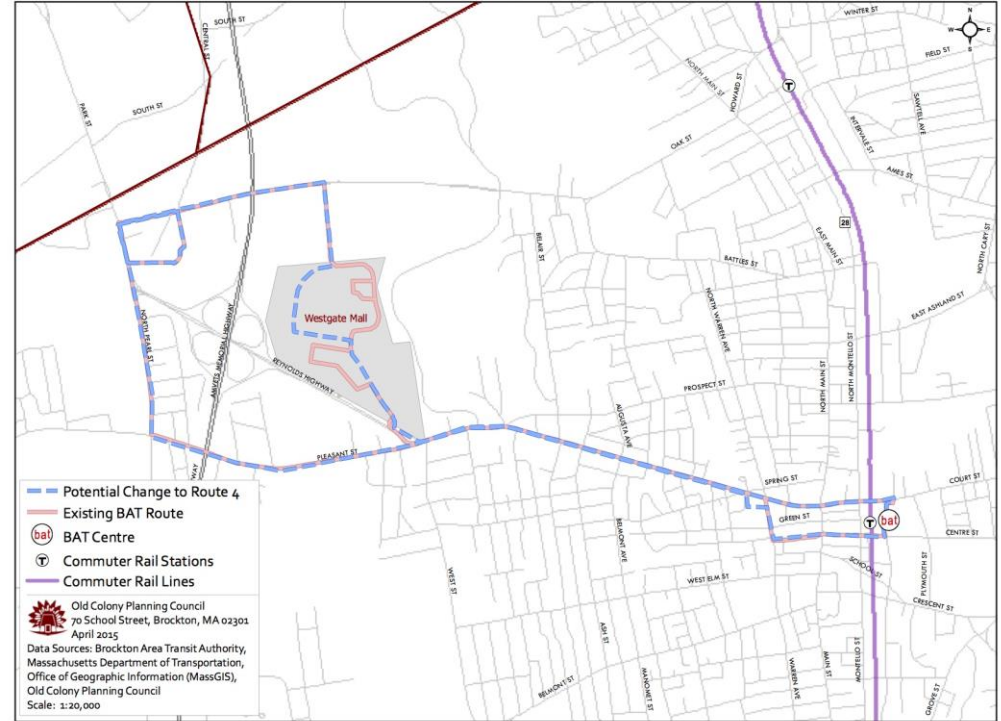


- Reduce number of stops to facilitate faster service.
- Service Stop & Shop Plaza Outbound via Inbound Plaza route.
- Analyze for possible route change if Casino is built.

Route 4: Westgate Via Pleasant

- Reduce number of stops to facilitate faster service.
- No longer service Sears
- Potentially provide service to New Vicente's Market

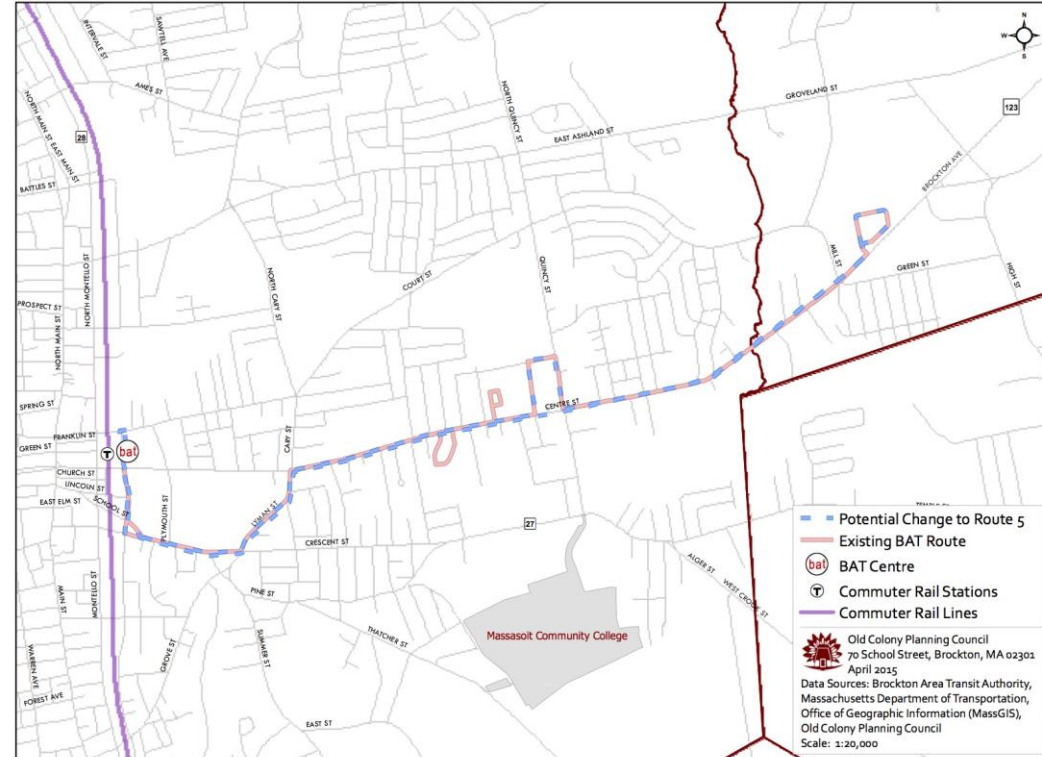
Brockton Area Transit Potential Route Change: 4



Route 5: Brockton Hospital Via Centre St.

- Reduce number of stops to facilitate faster service.
- No longer service emergency room.
- Eliminate deviation into Centre Plaza

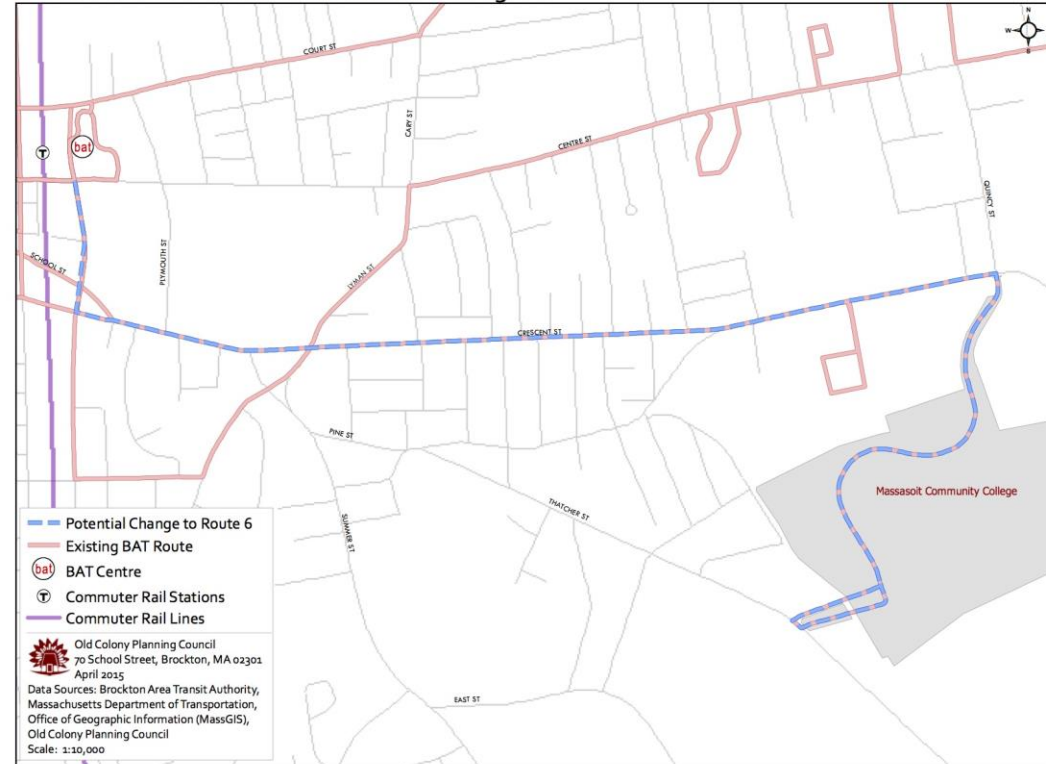
Brockton Area Transit Potential Route Change: 5



Route 6: Massasoit Via Crescent St.

- Reduce number of stops to facilitate faster service.
- Potentially eliminate leg of line that operates down Perkins, Lawrence, & Grove.
- Add stops at nursing center & other mid-points for express service.
- Possibly provide direct service to Brockton East Shopping Plaza

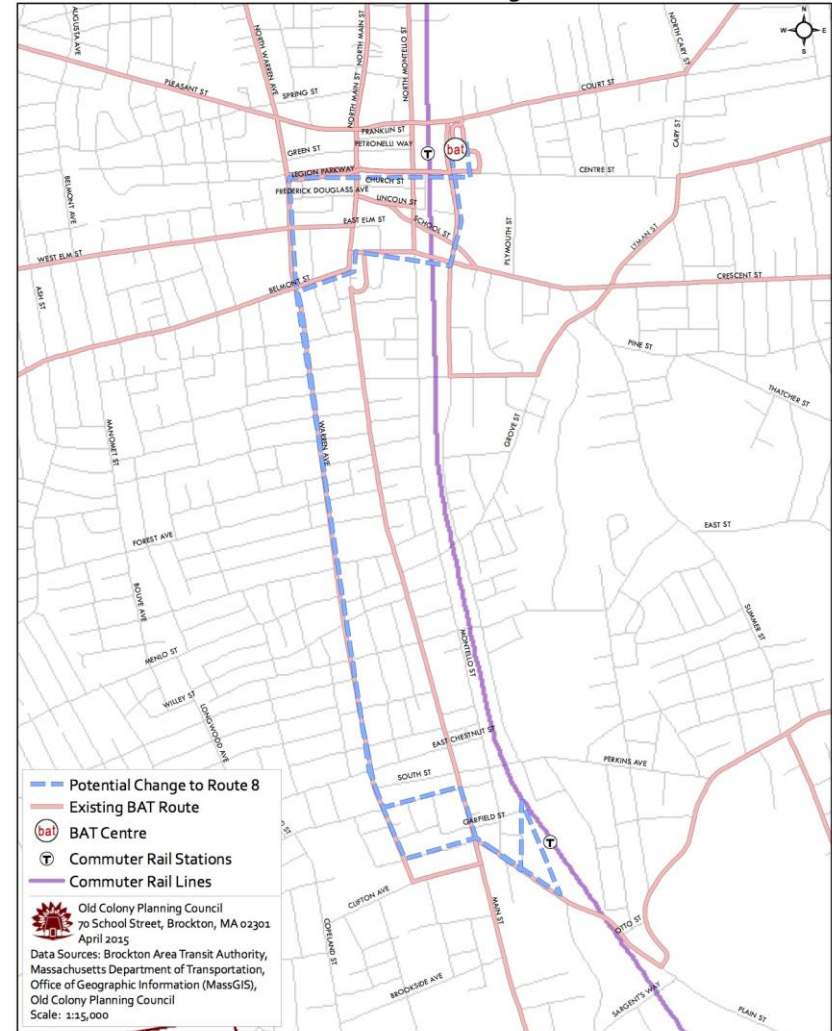
Brockton Area Transit Potential Route Change: 6



Route 8: Southfield Via Warren & Plain St.

- Potentially terminate line at Campello MBTA Commuter Rail Station if service expansion is implemented
- Will help reduce delay and increase line speed.
- Reduce travel time.

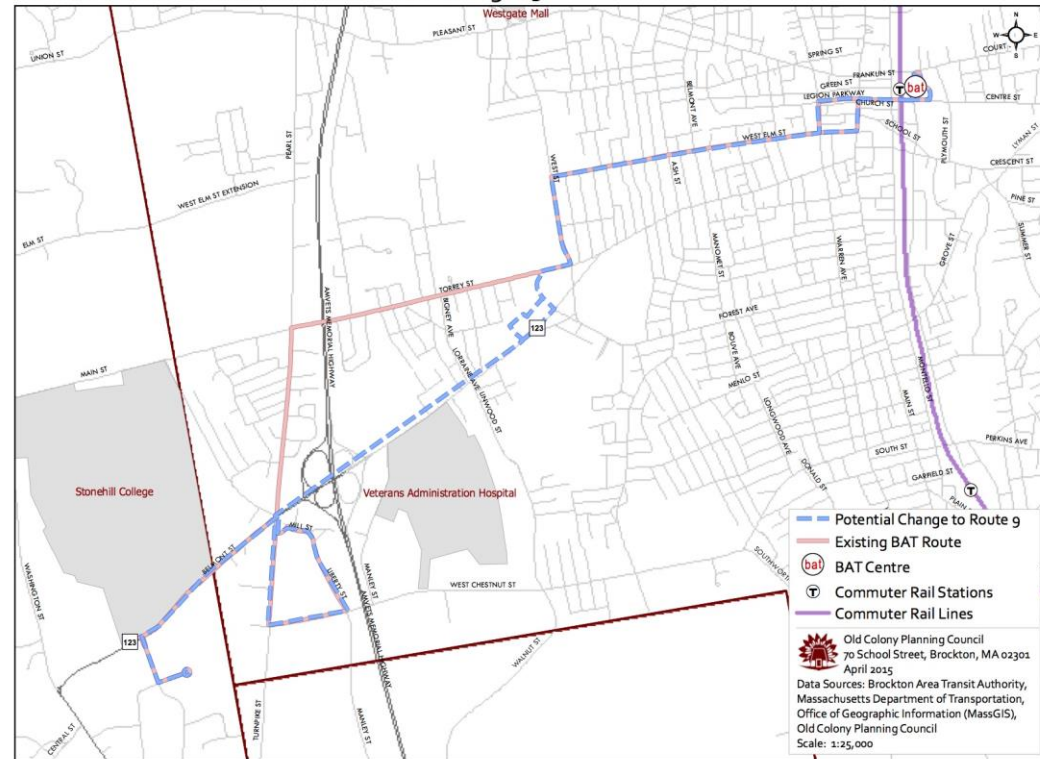
Brockton Area Transit Potential Route Change: 8



Route 9: Pearl Via W. Elm & Torrey

- Realign route along Belmont due to potential Fair Ground redevelopment or Casino construction.
- Provide direct service to Stop & Shop – Shaws Market Plaza
- Provides safe RT 24 crossing link.

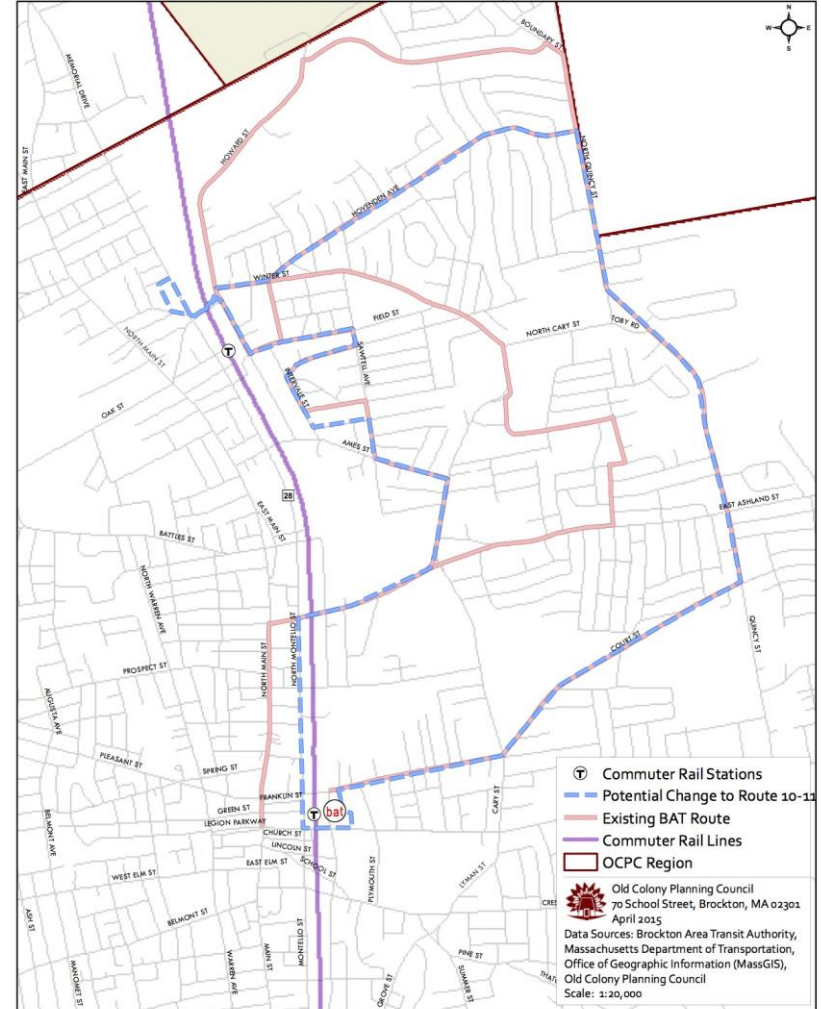
Brockton Area Transit Potential Route Change: 9



Route 10 & 11

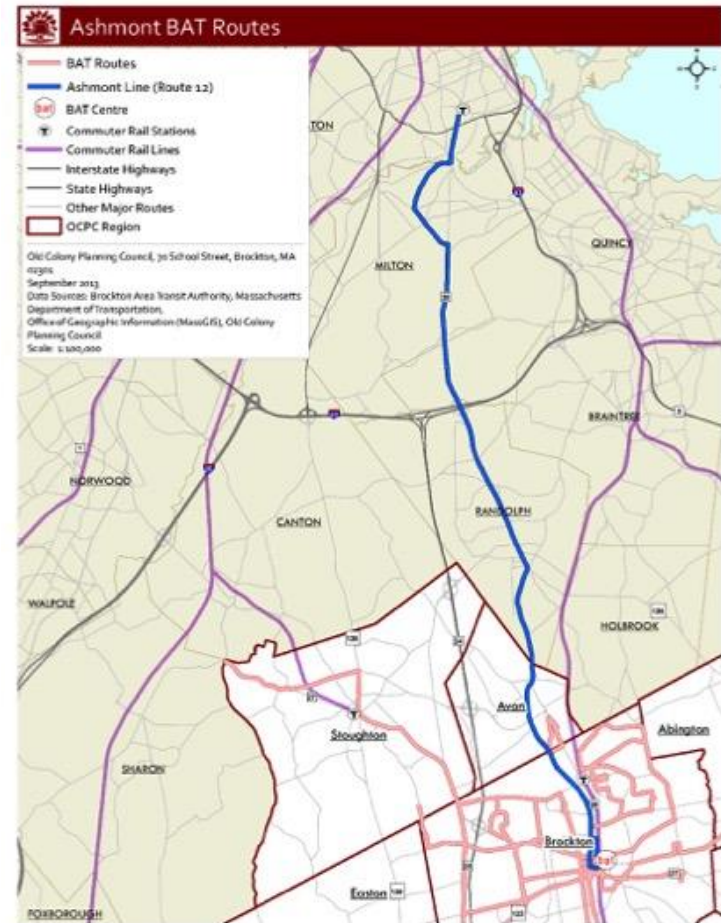
- Combine routes for greater efficiency.
- Reduce number of stops to facilitate faster service.
- Serve MBTA 230 only at Montello Station

Brockton Area Transit Potential Route Change: 10-11



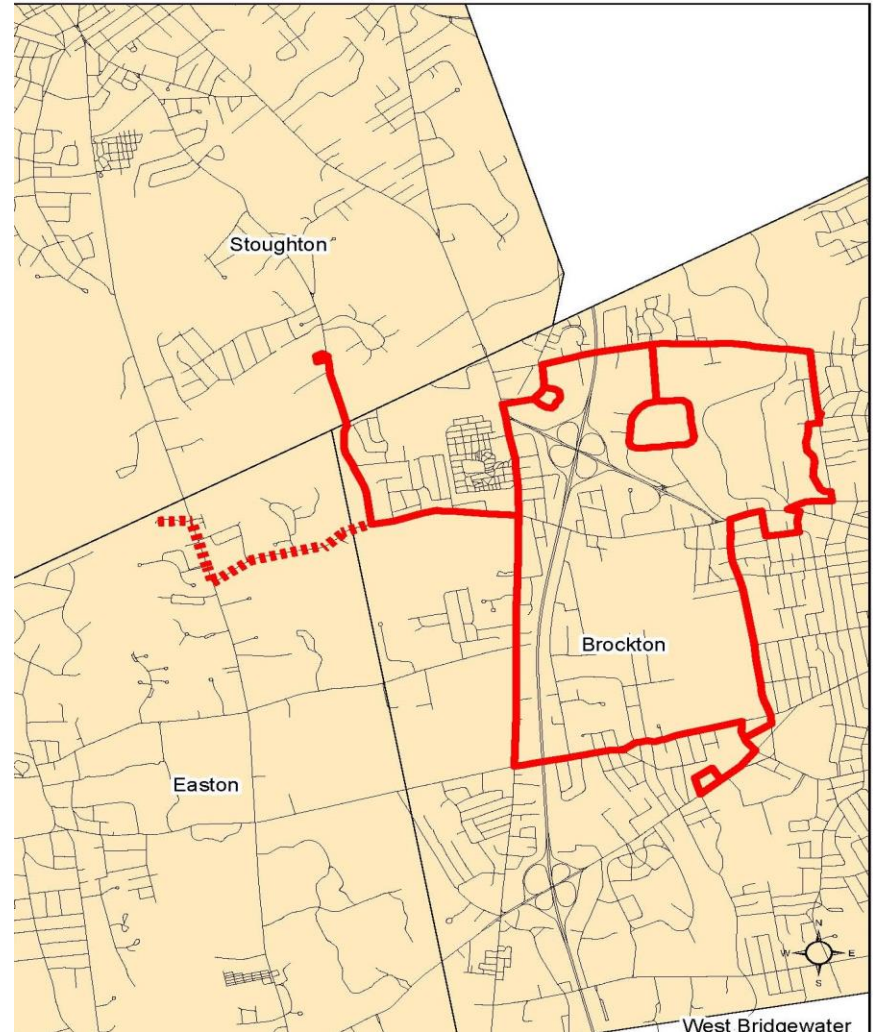
Route 12: Ashmont Service

- Continue to expand express bus service where needed.
- Space out stop locations for greater efficiency.
- No longer service East Main St due to safety concerns.



Route 13: Mini Maller

- Ridership has been growing slowly for past 5 years
- Covers gaps in service on the Westside of Brockton
- Rotate between Goddard Rehab and Roche Bro Plaza every other trip or service Roche Bro full-time.
- Recommend promotion of line

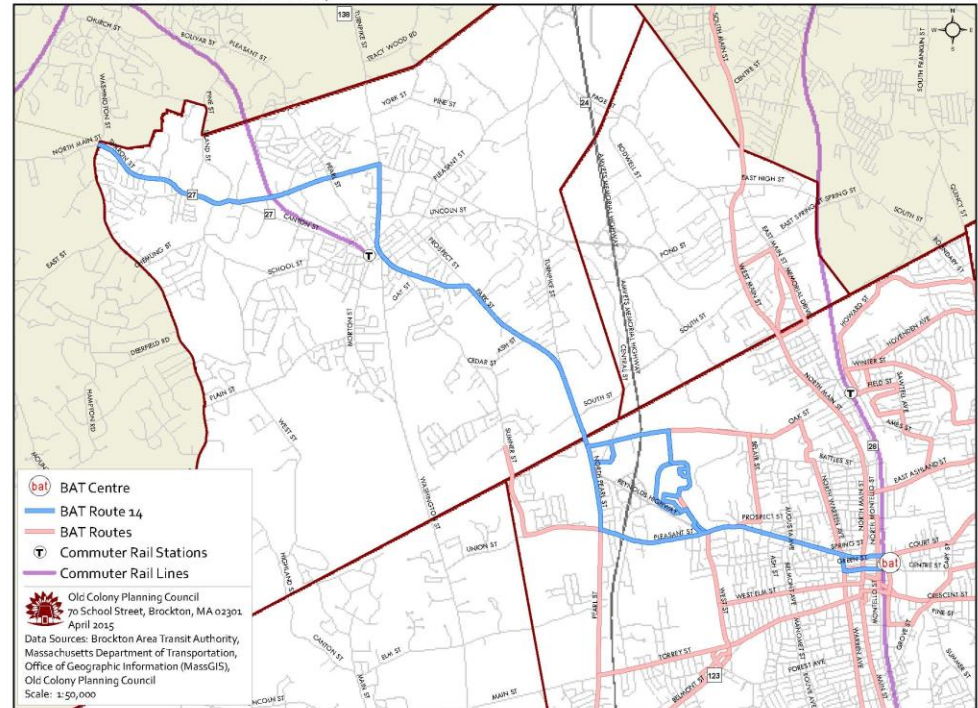


Route 14: Stoughton via Brockton

Service Recommendations

- Operate route 14 to BAT Centre every trip.
- Potentially eliminate routing on Pearl St & Pleasant St past RT 27
- Service between Westgate Mall and BAT Centre would be drop off only.

Brockton Area Transit Route 14



Rockland Flex Service

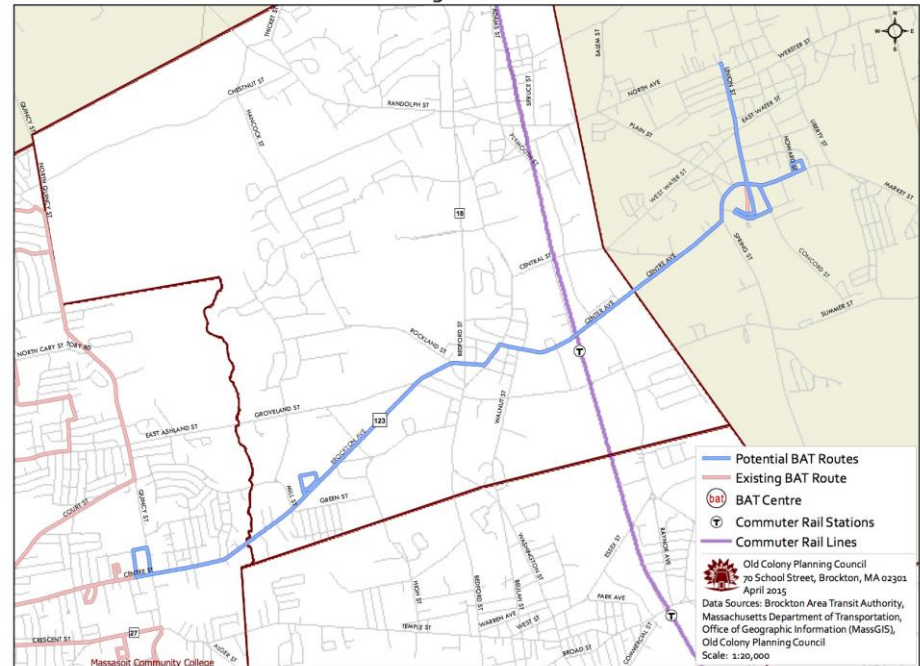
Service Issues

- Low ridership
- Route travels through low density resident not conducive to transit.
- Service hours limited

Service Recommendation

- Terminate Service At Walmart
- Or transition service to Paratransit operations.

Brockton Area Transit Potential Route Change: Rockland

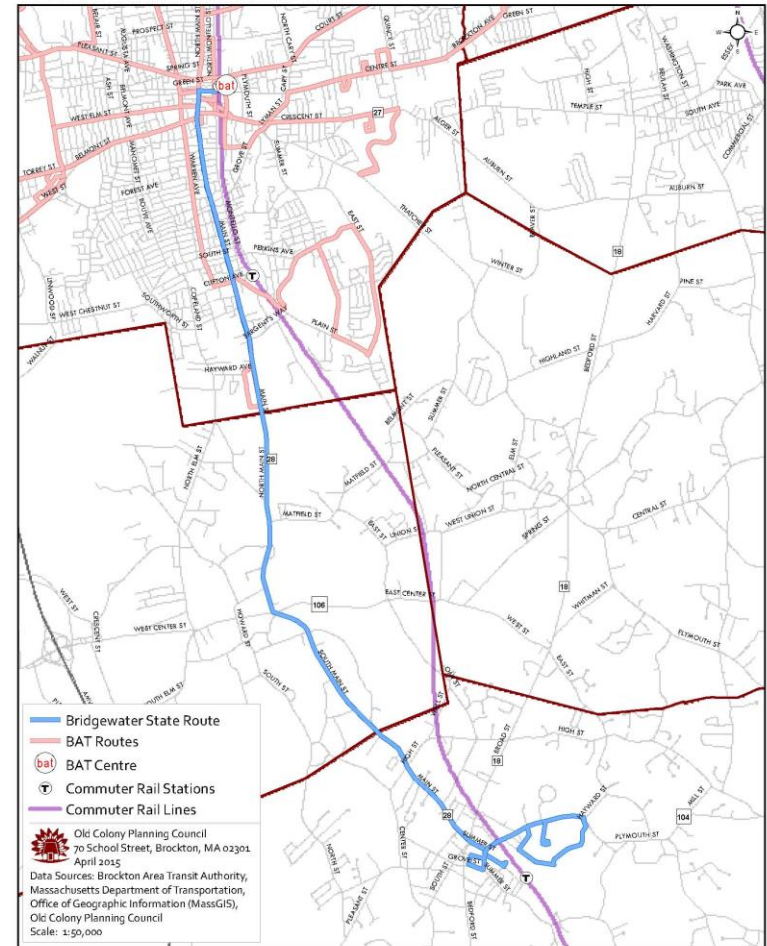


BSU Route 28

Service Recommendation

- Currently Provides service from University to Kmart Plaza in Brockton
- Requires Students to transfer from Route 2 to get to University
- Recommendation is to bring line to BAT Centre as an express from Bridgewater to Brockton.

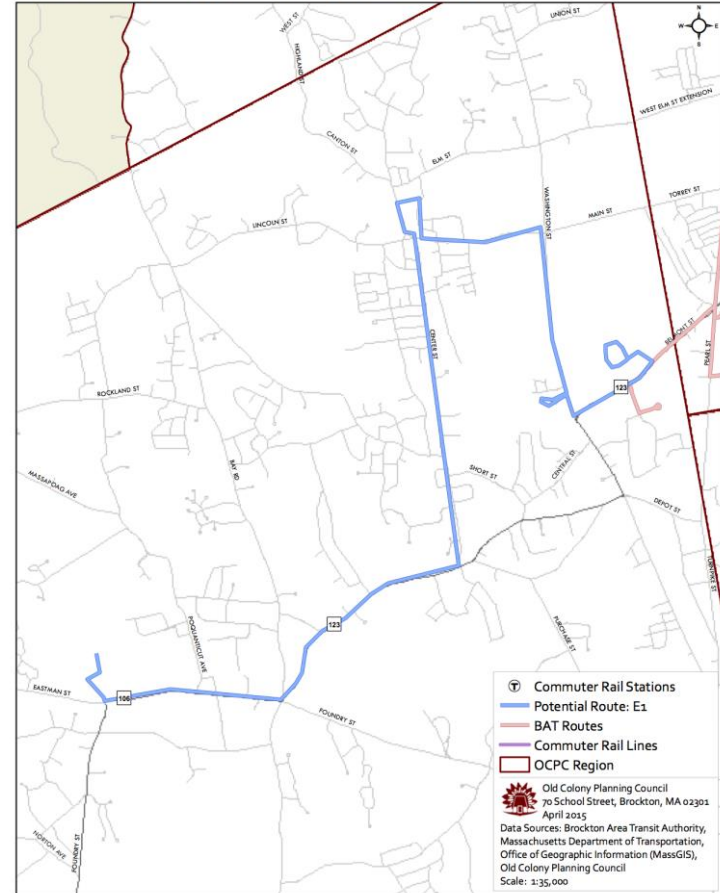
Brockton Area Transit Route 28



E1: Downtown Easton

- Expands service in Easton
- Provides service to Easton densest area
- Provides link to major commercial corridors and centers
- Establishes bus service to potential South Coast Rail Station
- Would provide service to Queset Commons

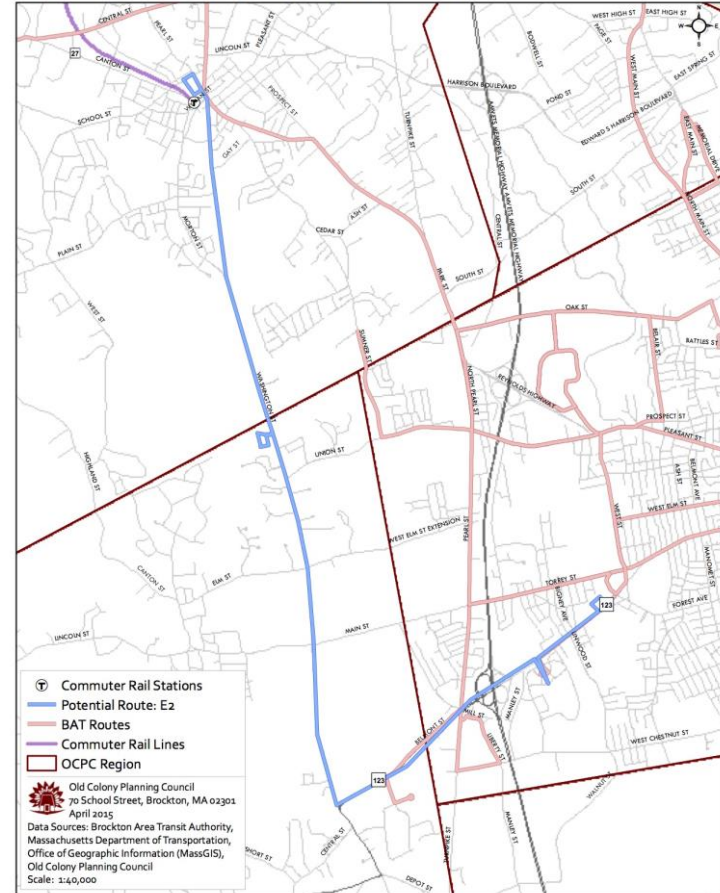
Brockton Area Transit Potential New Route: E1



E2: Easton to Stoughton

- Gives Brockton and Easton residents access to Businesses, shopping and medical service along RT 138
- Services Roche Bros plaza
- Provides bus service to potential South Coast Rail Station
- Provides transit link between Stoughton and Easton

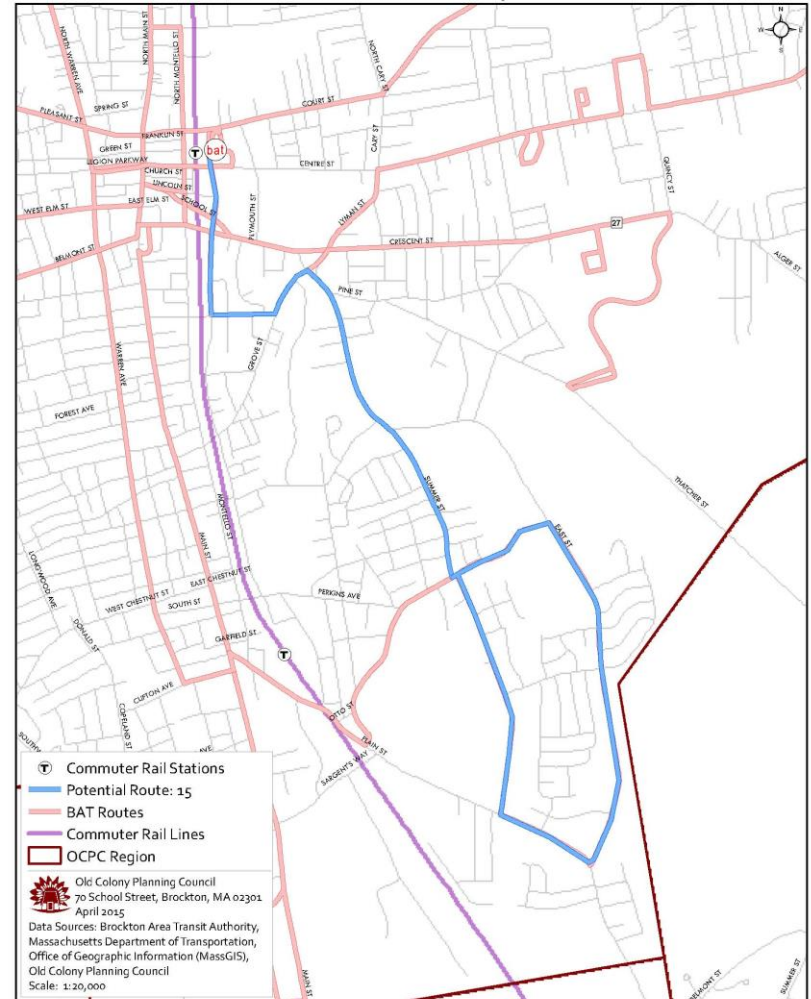
Brockton Area Transit Potential New Route: E2



New Route 7

- Relieves pressure off RT 8
- Provides south eastern Brockton with faster BAT Centre access.
- Services residential areas not currently served.

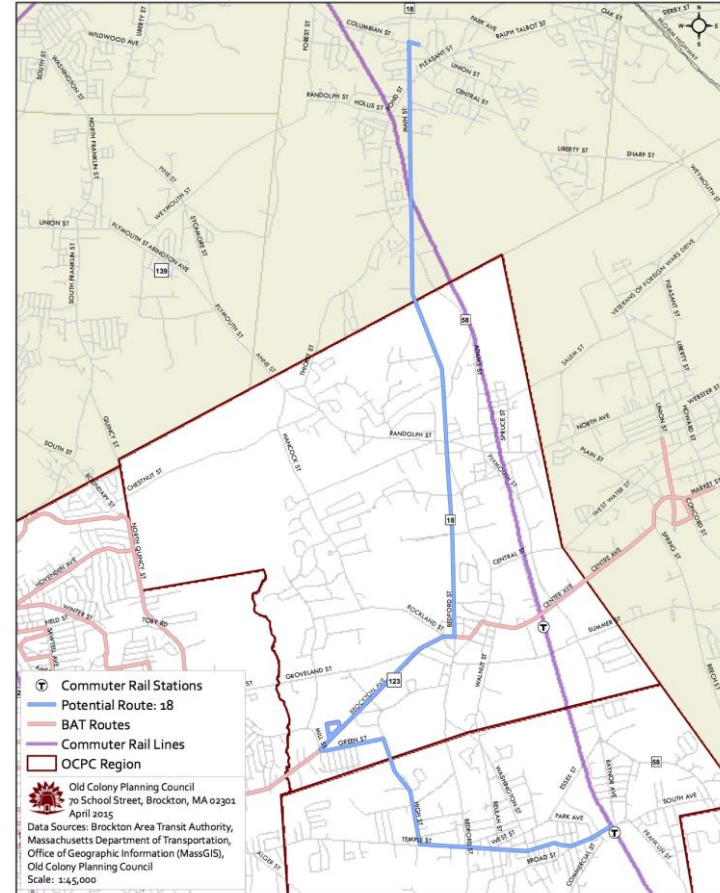
Brockton Area Transit Potential New Route: 7



Route 18

- Provides service to business and shopping along busy RT 18 Corridor
- Would Serve South Shore Hospital
- Provides service to densest part of Whitman
- Provides link to MBTA Commuter Rail service in Whitman to establish transit link to Plymouth

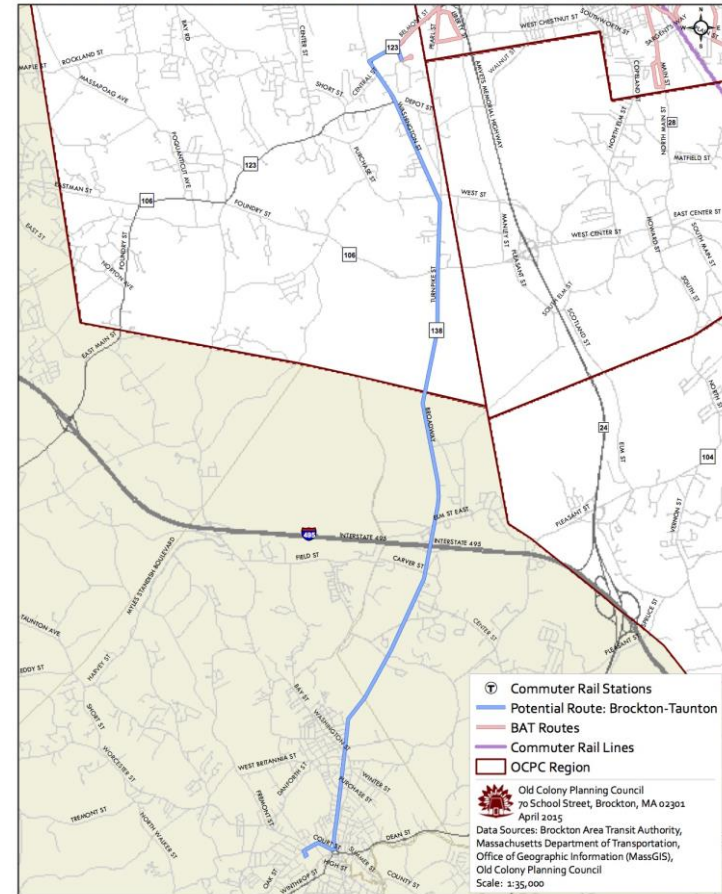
Brockton Area Transit Potential New Route: 18



Brockton – Taunton Line

- Provides desired link between Taunton and Brockton
- Provides greater regional mobility
- Provides an affordable option for residents to get from Greater Brockton Area to New Bedford/Fall River area.

Brockton Area Transit Potential New Route: Brockton-Taunton



Fare Recommendations

- Raise fare by .25 Cents
- Increase Charlie Card usage by lowering fare for card users by .50 Cents
- Install a TVM at Westgate Mall
- Provide web based access to Charlie Card account so passengers can reload card over web and review balance.



BAT Centre Recommendation

- Try to have passengers pay fare before bus departure
- Provide more secure bicycle parking
- Provide More seating to passengers

BAT Media Recommendations

- Have system map on buses
- Provide printed schedules for those that aren't tech savvy with mid-point approximate arrival times in all for LEP languages
- Develop digital ride guide for each line
- Improve social media presence.



Paratransit Recommendations

- Engage customers more so they understand the service
- Only assist passengers to the first floor of drop off location
- Move system to 10/20 drop off/pick up window
- Travel train Paratransit Passengers for greater fixed route usage



Brockton Area Transit Authority Comprehensive Regional Transportation Plan

THANK YOU

Paul Chenard , Transportation Planner , Old Colony Planning Council
pchenard@ocpcrpa.org 508-583-1833 Ext: 215