

ROAD SAFETY AUDIT

Central Street

Avon, MA

September 2019

Prepared For:

Avon, MA

Prepared By:

Old Colony Planning Council
70 School Street, Brockton, MA 02301

Prepared under MassDOT Contract 88826

This page left blank intentionally.

Table of Contents

The Road Safety Audit	1
The Road Safety Audit Meeting and Team	1
Project Location and Description.....	4
Audit Observations and Potential Safety Enhancements.....	5
Summary of Road Safety Audit.....	7

List of Appendices

Appendix A.	RSA Meeting Agenda
Appendix B.	RSA Audit Team Contact List
Appendix C.	Detailed Crash Data
Appendix D.	Additional Information
Appendix E.	Road Safety Audit References

List of Figures

Figure 1. Locus Map.....	3
--------------------------	---

List of Tables

Table 1: Participating Audit Team Members.....	2
Table 2: Estimated Time Table and Cost Breakdown.....	7
Table 3: Potential Safety Enhancement Summary – Central Street, Avon.....	8
Table 3: Potential Safety Enhancement Summary – Central Street, Avon (continued).....	9

The Road Safety Audit

The Federal Highway Administration (FHWA) defines a Road Safety Audit (RSA) as the formal safety examination of an existing or future road or intersection by an independent, multidisciplinary team. The purpose of the RSA is to identify potential safety issues and possible opportunities for safety improvements considering all roadway users. The RSA is intended to be a proactive process based on collaborative, qualitative, and quantitative analyses.

This Road Safety Audit (RSA) is for Central Street in Avon, and it was conducted by the Old Colony Planning Council upon request by the Town of Avon over concerns regarding numerous crashes along the road. The study area includes the section of Central Street, approximately 1.22 miles in Avon, which runs north from the Stoughton town line to the Stoughton town line in the western section of Avon (parallel and west of Route 24). This report documents the findings of the RSA, and includes crash data compilation, automatic traffic counts, and vehicle speeds.

The Road Safety Audit Meeting and Team

The Road Safety Audit took place on August 13, 2019 at the Avon Town Offices, 65 East Main Street in Avon. The meeting was facilitated by OCPC staff. OCPC provided a collision diagram and a compilation of the latest three year crash experience based on crash reports provided by the Avon Police Department.

The RSA meeting consisted of three components. The first portion of the meeting focused on a discussion of the issues and concerns. The participants then departed the office and visited the intersection for observations for the second portion of the meeting. The discussion of issues was continued during the site visit as OCPC staff took notes. The third portion of the meeting focused on potential short term and long term potential improvements for the intersection. The agenda and the background materials are included in the appendix to this report. Table 1 lists the names and affiliations of the audit participants. The study area location is shown in Figure 1.

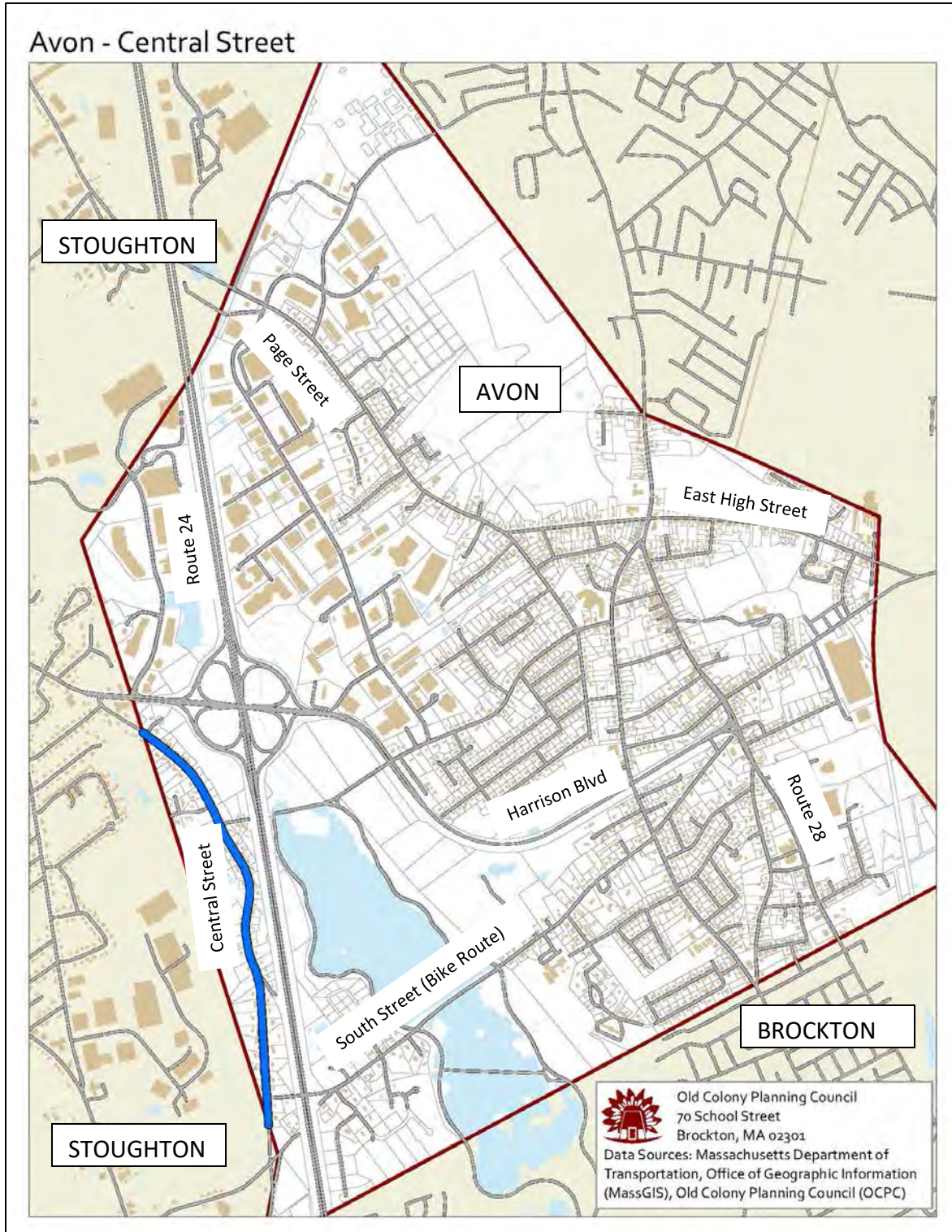


The Road Safety Audit for Central Street in Avon took place on August 13, 2019 at the Avon Town Offices, 65 East Main Street in Avon, and was facilitated by OCPC staff.

Table 1. Participating Audit Team Members

Audit Team Member	Agency/Affiliation
Brian Martin	Avon Department of Public Works
Robert Spurr	Avon Fire Department
Gregory Enos	Avon Town Manager
Bill Fitzgerald	Avon Department of Public Works
Bianca Marshall	Massachusetts Department of Transportation District 5 – Traffic
Jimmy Pereira	Old Colony Planning Council
Paul Chenard	Old Colony Planning Council
Raymond Guarino	Old Colony Planning Council

Figure 1. Locus Map



Project Location and Description

Central Street, Avon

Central Street in Avon is classified as an urban collector street and is under the jurisdiction of the Town of Avon. Central Street, which is also called Reservoir Street south of Old South Street, (in Avon and Brockton) connects between Oak Street in Brockton and Harrison Boulevard (and Route 24) in Avon, as well as Central Street in Stoughton. South of South Street, Central Street is in the Town of Stoughton. Central Street re-enters Avon south of the Central Street/Old South Street intersection, and is named Reservoir Street, and from there, the street enters into Brockton as Reservoir Street and intersects with Oak Street. Central Street has a two lane cross section and the width of the road varies. It is approximately 30 feet wide at the south most point at the Stoughton line. In the vicinity of the South Street intersection, Central Street is 35 feet wide. The width of the pavement on Central Street gets narrower in the vicinity of Old Central Street and is approximately 25 feet wide north of this intersection. The horizontal and vertical alignment along Central Street also vary with limitations in sight distance due to grade variations (just north of South Street) and reverse curves (just north of Old Central Street beginning at house number 233 Central Street).

The land use along Central Street is mainly residential single family homes. The Pines apartment complex is located in Brockton off of Reservoir Street just over the town line. The posted speed limit is 25 miles per hour in the northbound and the southbound directions. It is also posted at 30 miles per hour in the southbound direction at the Stoughton line south of South Street. A Special Speed Regulation (Number 756) was endorsed by MassDOT in 1972 for Central Street. This speed regulation set the legal speed limit for both directions of travel at 30 miles per hour for 0.83 miles from the north (through the reverse curve), and 45 miles per hour in the vicinity of the South Street intersection to the Stoughton town line. The speed limit reverts to the prima fascia south of Old South Street as Central Street is named Reservoir Street in Stoughton, Avon, and then Brockton. South Street connects Central Street to West Main Street and Route 28 in Avon. The South Street to Central Street route is used as an alternative route during times of congestion on Route 24 between Harrison Boulevard in Avon and Oak Street in Brockton. This South Street to Central Street route is also used by bicyclists and joggers. South Street in Stoughton, South Street in Avon, and the portion of Central Street (approximately 1,000 feet) that connects the two streets, are a designated bicycle route in the Old Colony Planning Council's *Bicycle and Pedestrian Connectivity and Livability Study*.

Old Colony Planning Council completed automatic traffic counts at three locations in Avon on Central Street including: Central Street south of Crescent Ridge Lane (just south of the north most Stoughton line), Central Street south of Old Pond Street, and Central Street north of Old South Street (just north of the Stoughton south most line). On Central Street south of Crescent Ridge Lane there were 3,860 vehicles per day. On Central Street south of Old Pond Street there were 3,620 vehicles per day. There were 6,472 vehicles per day on Central Street north of Old South Street (just north of the south most Stoughton line), between South Street in Stoughton and South Street in Avon. The higher vehicle counts at this location is due to the eastbound cut through route from South Street in Stoughton, north to Central Street for about 1,000 feet, and then continuing eastbound on South Street in Avon.

Crash Details and Overview

Crash reports were compiled from the Avon Police Department for the latest three year period, (2016, 2017, and 2018). The crashes are included in the appendix to this report. There were a total of 14 crashes along Central Street in Avon in the study area. Four of the 14 crashes (approximately 28 percent) resulted in personal injury. Four of the crashes (approximately 28 percent) were single vehicle crashes whereby the vehicle left the travel lane and hit an object along the side of the road. Three of these ran off the road type crashes were clustered within the reverse curve (around number 233 Central Street). The collision diagrams and a summary of the crash data is included in the appendix of this report.

Audit Observations and Potential Safety Enhancements

During the RSA meeting prior to the field visits, an introduction of the RSA process and a summary of the crash information for the intersection was presented to the audit participants. Following the presentation, the members of the audit team were asked to discuss the existing issues that may affect safety. The audit team then visited the intersection as a group, at which time observations, safety concerns, and deficiencies were identified and documented by OCPC staff.

The following sections list the safety concerns and the potential enhancements that were identified during the RSA.

Safety Issue: There is a pattern of single vehicle lane-departure crashes within the reverse curve (around number 233 Central Street).

Three of the single vehicle ran off the road type crashes were clustered within the reverse curve (around number 233 Central Street). There are high speeds and a lack of sight distance throughout this section of the road.

Enhancement: Reconstruct the road and add a sidewalk with raised curb.

Enhancement: Remove vegetation within this section of the road to improve sight lines.

Safety Issue: The posted speed limit signs are not consistent with the legal limits set in Special Speed Regulation (Number 756, Speed Permit).

Special Speed Regulation (Number 756) was endorsed by MassDOT in 1972 and the town for Central Street. This speed regulation set the legal speed limit for both directions of travel at 30 miles per hour for



There have been a number of single vehicle lane departure crashes within the reverse curve where the vehicle ran off the road. This picture shows the damage to the wall of one of those crashes caused within the property of a residence along the road (to the left of the photo).

0.83 miles from the north (through the reverse curve), and 45 miles per hour in the vicinity of the South Street intersection. The posted speed limit on Central Street is 25 miles per hour in the northbound and the southbound directions, which is inconsistent with the legally established speed limits in Special Speed Regulation (Number 756).

Enhancement: The posted speed limit signs on Central Street should be consistent with Special Speed Regulation (Number 756), which calls for the posted legal speed limit for both directions of travel at 30 miles per hour for 0.83 miles from the north (through the reverse curve), and 45 miles per hour in the vicinity of the South Street intersection.

Enhancement: The Town should consider a study of speeds through the reverse curve portion of the road using a ball-bank indicator to determine a possible posted warning sign speed (this would be for determining a posted warning sign and not for preceding the existing established legal speed limit in Special Speed Regulation, Number 756).

Enhancement: The Town should consider installing speed feedback signs for vehicles entering the reverse curve area in the northbound and southbound directions.

Enhancement:

Safety Issue: The sight distance and sight lines along Central Street south of South Street are poor due to the variations in the grade, and the signs along the road are faded, antiquated, and create “sign clutter”.

Enhancement: The Town should consider a sign study revising the types of warning signs, sign placement, and updates for sign reflectivity. Design, place and implement signs in accordance with the *Manual On Uniform Traffic Control Devices* (MUTCD).

Safety Issue: There is poor lighting throughout the length of the street.

Enhancement: Re-evaluate and improve lighting along the street.

Safety Issue: There is a lack of fog lines along the road.

Enhancement: Re-evaluate pavement markings and add fog lines along the side of the road.

Safety Issue: Central Street, between South Street in Stoughton and South Street in Avon, is a designated bicycle route and used heavily by pedestrians and joggers.

Enhancement: Consider adding a separate shared use path on Central Street to connect the route between South Street in Stoughton and South Street in Avon, if the right of way is wide enough.



The sidewalk on South Street ends at Central Street (in the center of the photo).

Enhancement: The Town of Avon should consider adopting and approving a Complete Streets Policy. In addition to planning and designing roads to include all road users, such as walkers and bicycle riders, the adoption of a Complete Streets Policy will make the town eligible for State funds for projects through the State’s Complete Streets Program.

Enhancement: The Butler Elementary School and Avon Middle School should consider joining the Safe Routes to School program to participate in its safety and education program, and to encourage walking and bicycling to school. The Butler Elementary School is located on South Street in Avon just under one mile to the east of Central Street. The Avon Middle School is located further away on West Main Street next to the Avon High School.

Safety Issue: The pavement is in fair to poor condition on Central Street.

Enhancement: The Town of Avon has filed a \$1.3 million dollar MassWorks application for reclaiming and repaving the pavement surface. This project includes adding a 5,800 shared walking, bicycling path along the east side of the road. The MassWorks grant award will be announced in November of 2019, which will affect the timing of this recommendation.

Summary of Road Safety Audit

Based on the review of data, on-site field observations and group discussion, the RSA team identified possible enhancements that could improve safety on Central Street. Further study and design work will need to be conducted to determine the feasibility of making some of the improvements. Table 2 summarizes the estimated time frame and costs breakdown and Table 3 summarizes the safety issues, possible enhancements, estimated safety payoff, time frame, cost, and responsibility. Safety payoff estimates are based on engineering judgment and are categorized as low, medium, and high. The time frame is categorized as short-term (<1 year), midterm (1 to 3 years), or long-term (typically >3 years). Long-term improvements are typically considered to be substantial improvements with an expected time frame for implementation greater than 3 years. The costs are categorized as low (<\$10,000), medium (\$10,001 to \$50,000), or high (>\$50,000).

Table 2: Estimated Time Frame and Cost Breakdown

Time Frame		Costs	
Short-Term	<1 Year	Low	<\$10,000
Mid-Term	1-3 Years	Medium	\$10,001-\$50,000
Long-Term	>3 Years	High	>\$50,000


Table 3: Potential Safety Enhancement Summary – Central Street, Avon

Safety Issue	Potential Safety Enhancement	Safety Payoff	Time Frame	Cost	Responsible Agency
There is a pattern of single vehicle lane-departure crashes within the reverse curve (around number 233 Central Street).	Reconstruct the road and add a sidewalk with raised curb.	High	> 3 Years	High	Town of Avon
	Remove vegetation within this section of the road to improve sight lines.	Medium	< 1 Year	Low	Town of Avon
The posted speed limit signs are not consistent with the legal limits set in Special Speed Regulation (Number 756, Speed Permit).	The posted speed limit signs on Central Street should be consistent with Special Speed Regulation (Number 756), which calls for the posted legal speed limit for both directions of travel at 30 miles per hour for 0.83 miles from the north (through the reverse curve), and 45 miles per hour in the vicinity of the South Street intersection.	Medium	< 1 Year	Low	Town of Avon
	The Town should consider a study of speeds (utilizing an engineering consultant) through the reverse curve portion of the road using a ball-bank indicator to determine a possible posted warning sign speed (this would be for determining a posted warning sign and not for superseding the existing established legal speed limit in Special Speed Regulation, Number 756).	Medium	< 1 Year	Low	Town of Avon
	Consider installing speed feedback signs for vehicles entering the reverse curve area in the northbound and southbound directions.	Medium	< 1 Year	Medium	Town of Avon
The sight distance and sight lines along Central Street south of South Street are poor due to the variations in the grade, and the signs along the road are faded, antiquated, and create “sign clutter”.	The town should consider a sign study (utilizing an engineering consultant) revising the types of warning signs, sign placement, and updates for sign reflectivity. Design, place, and implement signs in accordance with the MUTCD.	Medium	< 1 Year	Medium	Town of Avon

Table 3: Potential Safety Enhancement Summary – Central Street, Avon (continued)

Safety Issue	Potential Safety Enhancement	Safety Payoff	Time Frame	Cost	Responsible Agency
There is poor lighting throughout the length of the street.	Re-evaluate and improve lighting along the street.	Medium	< 1 Year	Medium	Town of Avon
There is a lack of fog lines along the road.	Re-evaluate pavement markings and add fog lines along the side of the road.	Medium	< 1 Year	Medium	Town of Avon
Central Street, between South Street in Stoughton and South Street in Avon, is a designated bicycle route and used heavily by pedestrians and joggers.	The Town should consider adding a separate shared use path on Central Street to connect the route between South Street in Stoughton and South Street in Avon, if the right of way is wide enough.	Medium	< 1 Year	Low	MassDOT
	The Town of Avon should consider adopting and approving a Complete Streets Policy. In addition to planning and designing roads to include all road users, such as walkers and bicycle riders, the adoption of a Complete Streets Policy will make the town eligible for State funds for projects through the State's Complete Streets Program.	High	> 3 Years	High	MassDOT
	The Butler School and Avon Middle School should consider joining the Safe Routes to School program to encourage walking and bicycling to school.	Medium	1-3 Years	Medium/High	MassDOT
The pavement is in fair to poor condition on Central Street.	The Town of Avon has filed a \$1.3 million dollar MassWorks application for reclaiming and repaving the pavement surface. This project includes adding a 5,800 shared walking, bicycling path along the east side of the road. The MassWorks grant award will be announced in November of 2019, which will affect the timing of this recommendation.	High	> 3 Years	High	MassDOT/ Town of Avon

Appendix A. RSA Meeting Agenda

Agenda	Road Safety Audit
	Avon, MA Central Street
	Meeting Location: Avon Town Offices 65 East Main Street Avon, MA 02322 Tuesday, August 13, 2019 10:00 AM – 12:00 PM
Type of meeting:	Road Safety Audit
Attendees:	Invited Participants to Comprise a Multidisciplinary Team
Please bring:	Thoughts and Enthusiasm
10:00 AM	Welcome and Introductions
10:05 AM	Review of Site Specific Material - Review and Discuss Project <ul style="list-style-type: none">• Review of Traffic Data• Existing Conditions and Known Challenges
10:45 AM	Visit the Intersection and Discussion <ul style="list-style-type: none">• Identify deficiencies at the study area location• OCPC staff will document all observations and comments
11:30 AM	Wrap up Site Visit and Post Visit Discussion Meeting <ul style="list-style-type: none">• Discuss issues and document and finalize potential improvements
12:00 PM	Adjourn for the Day
Instructions for Participants: <ul style="list-style-type: none">• Before attending the RSA, participants are encouraged to drive through the intersection and complete/consider elements on the RSA Prompt List with a focus on safety.• All participants will be actively involved in the process throughout.• After the RSA meeting, participants will be asked to comment and respond to the document materials to assure it is reflective of the RSA completed by the multidisciplinary team.• CONTACT: Please direct questions regarding this RSA to Raymond Guarino, OCPC, (508) 583-1833, Ext 212, rguarino@ocpcrpa.org.	
	Old Colony Planning Council 70 School Street Brockton, MA 02301

Appendix B: RSA Audit Team Contact List

Participating Audit Team Members

Date: August 13, 2019 Location: Avon Town Offices, Avon, MA

Audit Team Members	Agency/Affiliation	Email Address
Brian Martin	Avon DPW	bmartin@avon-ma.gov
Robert Spurr	Avon Fire Department	rspurr@avon-ma.gov
Greg Enos	Town of Avon	genos@avon-ma.gov
Bill Fitzgerald	Avon DPW	wfitzgerald@avon-ma.gov
Bianca Marshall	Massachusetts Department of Transportation District 5 – Traffic	Bianca.marshall@dot.state.ma.us
Jimmy Pereira	Old Colony Planning Council	jpereira@ocpcrpa.org
Paul Chenard	Old Colony Planning Council	pchenard@ocpcrpa.org
Raymond Guarino	Old Colony Planning Council	rguarino@ocpcrpa.org

Appendix C: Detailed Crash Data

COLLISION DIAGRAM
 Central Street - Avon
 Collision Diagram for Crashes (2016 to 2018)
 Prepared by OCPC (RG 7/2019) (Source: Avon Police Department)



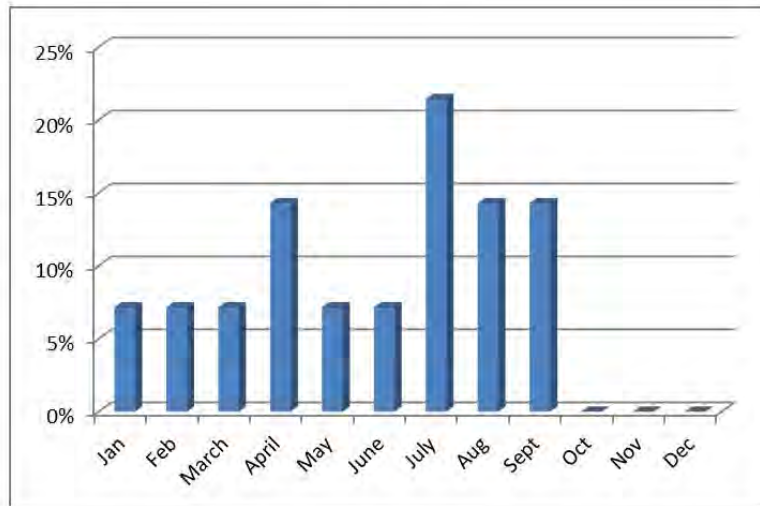
SYMBOLS	
←	Moving Vehicle
○	Injury Crash
XX	Crash Number
↑	N

**Crash Data Summary Table
 Central Street in Avon**

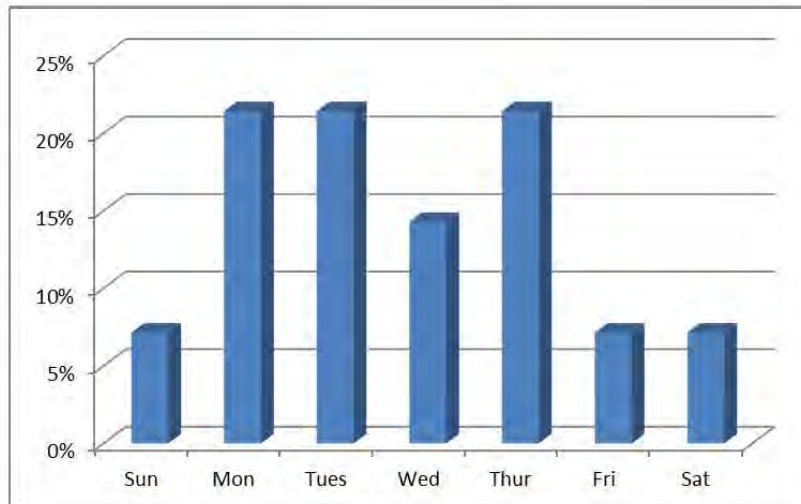
Crash Num	P.D. Code	Crash Date	Crash Day	Time of Day	Manner of Coll	Light Cond	Weather	Road Surf	Age 1	Age 2	Comments	Injury
1	I-2016-0381	1/14/2016	Thur	7:16 PM	Angle	Dark Lighted Road	Clear	dry	22	55	Vehicle backing out of driveway at Number 182 Central Street was hit by another vehicle headed south.	PDO
2	I-2016-01797	3/14/2016	Mon	3:23 PM	Rear-end	Daylight	Rain	wet	19	58	Vehicle turning left to 313 Central St southbound rear-ended by another southbound vehicle.	INJ
3	I-2016-03408	5/23/2016	Mon	11:32 AM	NA	NA	NA	NA			Minor Crash at 243 Central Street.	PDO
4	I-2016-04482	7/6/2016	Wed	3:06 PM	Angle	Daylight	Clear	dry	26	20	Vehicle exiting 332 Central collided with southbound vehicle.	PDO
5	I-2016-05116	8/3/2016	Tue	8:24 AM	Ran off Road	Daylight	Clear	dry	56		Single vehicle crash distracted due to cell phone at 230 Central St southbound - Citation issued for operating after revoked license.	PDO
6	I-2016-08581	12/27/2016	Tue	5:24 PM	Rear-end	Dark Lighted Road	Clear	dry	51	45	Northbound vehicle rear-ended another waiting to turn left to South Street	PDO
7	I-2018-0862	2/21/2018	Wed	10:32 PM	Animal Sideswipe	Dark Lighted Road	NA	NA			Car hit deer	PDO
8	I-2018-01663	4/5/2018	Thur	4:08 PM	e same direction	Daylight	Clear	dry	37	61	Sideswipe same direction southbound	PDO
9	I-2018-02967	6/18/2018	Mon	9:35 PM	Angle	Dark Lighted Road	Rain	wet	47		Angle crash at intersection South St at Central St	PDO
10	I-2018-03328	7/8/2018	Sun	9:02 AM	Ran off road	Daylight	Clear	dry	20		Ran off road, operator cited for marked lane violation and operating to endanger.	INJ
11	I-2018-03499	7/14/2018	Sat	11:37 PM	Ran off road	Dark Lighted Road	Clear	dry	22		Ran off the road due to deer at 233 Central Street.	PDO
12	I-2018-04489	8/30/2018	Thur	7:34 PM	Head-on	Dark Lighted Road	Clear	dry	21	38	Motorist tried passing a car in front of it and hit a vehicle in the opposite direction.	INJ
13	I-2018-06777	12/21/2018	Fri	10:21 AM	Ran off road	Daylight	Clear	wet	62		Ran off road.	PDO
14	4370264	4/11/2017	Tues	10:58 PM	Angle	Dark Lighted Road	Clear	Dry			Int crash at Central and South Sts	INJ

Central Street - Avon

Crash Month

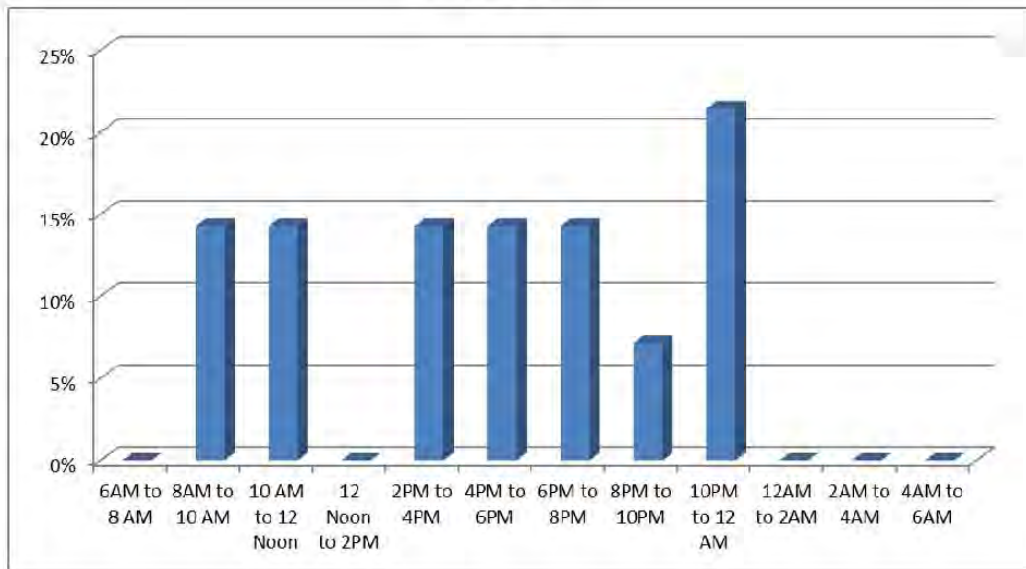


Day of the Week

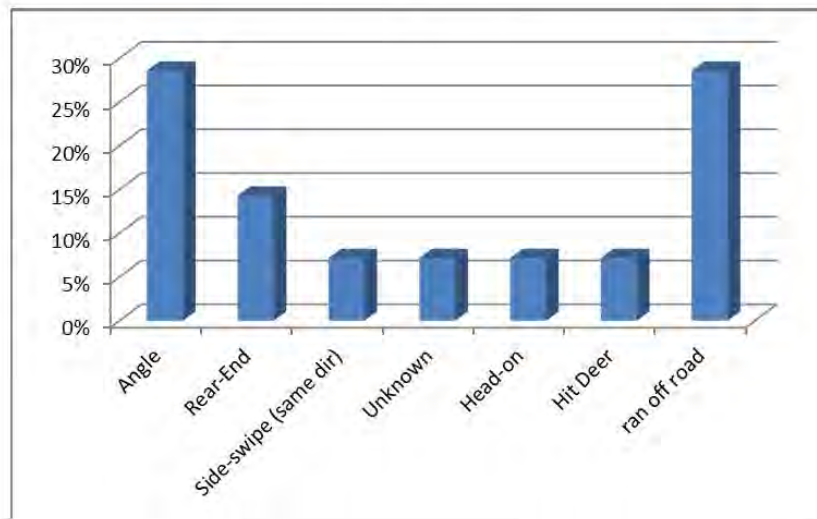


Central Street - Avon

Time of Day

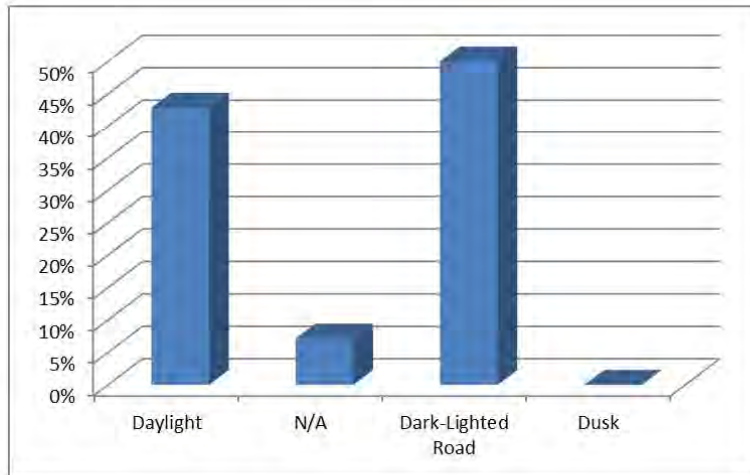


Manner of Collision

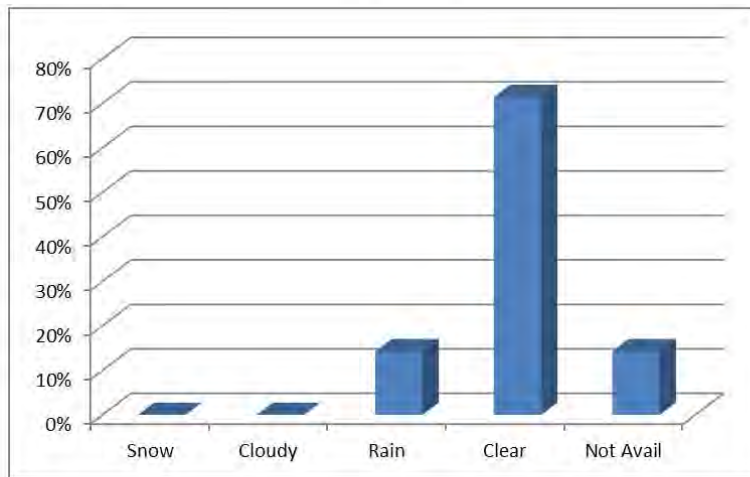


Central Street - Avon

Light Conditions

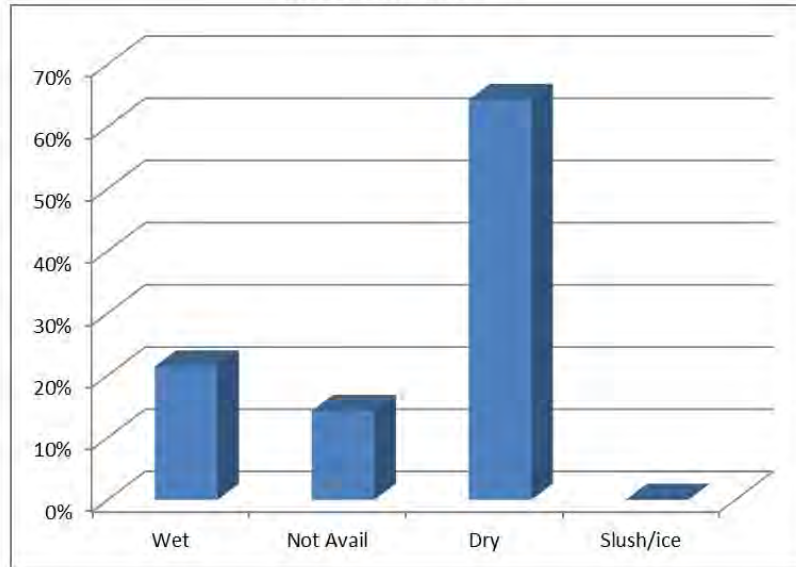


Weather Conditions

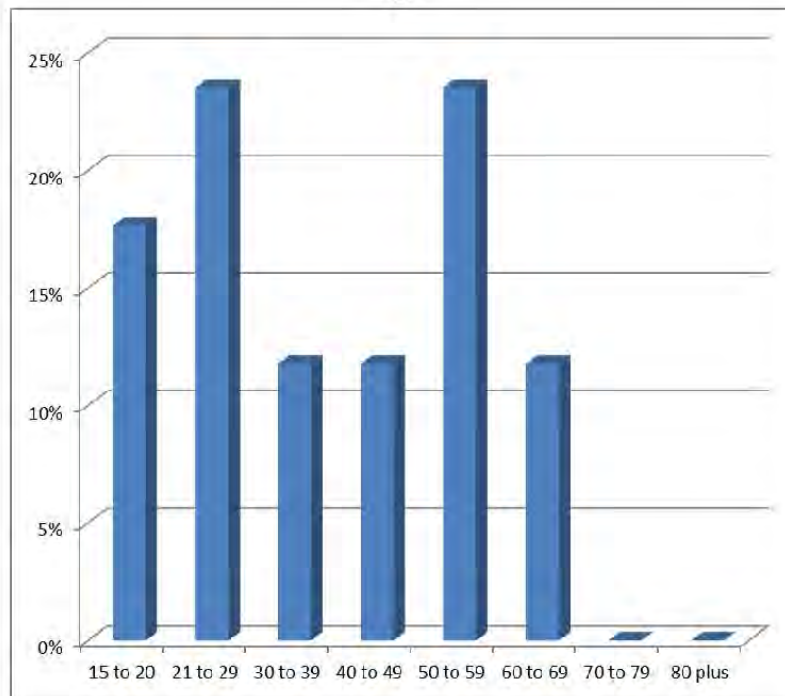


Central Street - Avon

Road Surface Conditions



Age



Central Street - Avon

Appendix D: Additional Information

- Automatic Traffic Counts

Road Safety Audit — Central Street – Avon
 Prepared by Old Colony Planning Council – *Final*

Old Colony Planning Council
 70 School Street
 Brockton, MA 02301
 (508) 583-1833
 www.ocpcrpa.org

Page 1
 Station ID:
 Site Code: 18
 Date Start: 01-May-19
 Date End: 02-May-19
 Central St, north of South St

Community: Avon
 Corri#_UR/FC: 18_U8
 Recorder #: 22929
 Layout: L6 Basic (2')

Start Time	29-Apr-19		Tue		Wed		Thu		Fri		Sat		Sun		Week Average	
	NB	SB	NB	SB	NB	SB	NB	SB	NB	SB	NB	SB	NB	SB	NB	SB
12:00 AM	*	*	*	*	11	20	19	21	*	*	*	*	*	*	15	20
01:00	*	*	*	*	10	8	16	19	*	*	*	*	*	*	13	14
02:00	*	*	*	*	8	5	5	5	*	*	*	*	*	*	6	5
03:00	*	*	*	*	8	6	6	6	*	*	*	*	*	*	7	6
04:00	*	*	*	*	14	12	13	7	*	*	*	*	*	*	14	10
05:00	*	*	*	*	80	23	78	19	*	*	*	*	*	*	79	21
06:00	*	*	*	*	246	98	221	102	*	*	*	*	*	*	234	100
07:00	*	*	*	*	279	188	253	151	*	*	*	*	*	*	265	160
08:00	*	*	*	*	198	187	186	176	*	*	*	*	*	*	192	182
09:00	*	*	*	*	147	150	152	167	*	*	*	*	*	*	150	164
10:00	*	*	*	*	145	177	151	162	*	*	*	*	*	*	148	170
11:00	*	*	*	*	177	186	167	158	*	*	*	*	*	*	172	172
12:00 PM	*	*	*	*	202	183	197	181	*	*	*	*	*	*	200	182
01:00	*	*	*	*	192	225	219	207	*	*	*	*	*	*	206	216
02:00	*	*	*	*	210	239	193	243	*	*	*	*	*	*	202	241
03:00	*	*	*	*	245	256	216	279	*	*	*	*	*	*	232	288
04:00	*	*	*	*	244	299	278	391	*	*	*	*	*	*	261	345
05:00	*	*	*	*	209	313	211	365	*	*	*	*	*	*	210	339
06:00	*	*	*	*	183	250	198	251	*	*	*	*	*	*	190	250
07:00	*	*	*	*	124	152	133	162	*	*	*	*	*	*	128	157
08:00	*	*	*	*	100	130	89	125	*	*	*	*	*	*	94	128
09:00	*	*	*	*	58	82	66	85	*	*	*	*	*	*	62	74
10:00	*	*	*	*	35	52	27	84	*	*	*	*	*	*	31	58
11:00	*	*	*	*	19	39	20	35	*	*	*	*	*	*	20	37
Lane Day	0	0	0	0	3145	3310	3116	3561	0	0	0	0	0	0	3132	3339
AM Peak	-	-	-	-	07:00	08:00	07:00	08:00	-	-	-	-	-	-	07:00	08:00
Vol	-	-	-	-	279	187	253	176	-	-	-	-	-	-	265	182
PM Peak	-	-	-	-	15:00	17:00	16:00	16:00	-	-	-	-	-	-	16:00	16:00
Vol	-	-	-	-	245	313	278	391	-	-	-	-	-	-	261	345

Comb. Total 0 0 6455 6477 0 0 0 6471

Road Safety Audit — Central Street – Avon
 Prepared by Old Colony Planning Council – *Final*

Old Colony Planning Council
 70 School Street
 Brockton, MA 02301
 (508) 583-1833
 www.ocpcrpa.org

Page 6

Community: Avon
 Com#_UR/FC: 18_U6
 Recorder #: 22929
 Layout: L6 Basic (2')

Station ID:
 Site Code: 18
 Date Start: 01-May-19
 Date End: 02-May-19
 Central St, north of South St

NB, SB	Start	1	36	41	46	51	56	61	66	71	76	81	86	91	96	Total
Time	35	40	45	50	55	60	65	70	75	80	85	90	95	999	999	Total
06/02/19	15	14	9	1	1	0	0	0	0	0	0	0	0	0	0	40
01:00	21	9	5	0	0	0	0	0	0	0	0	0	0	0	0	35
02:00	3	5	2	0	0	0	0	0	0	0	0	0	0	0	0	10
03:00	7	4	1	0	0	0	0	0	0	0	0	0	0	0	0	12
04:00	10	4	4	1	1	0	0	0	0	0	0	0	0	0	0	20
05:00	29	32	22	10	3	1	0	0	0	0	0	0	0	0	0	97
06:00	147	113	43	15	5	0	0	0	0	0	0	0	0	0	0	323
07:00	175	149	65	12	2	1	0	0	0	0	0	0	0	0	0	404
08:00	193	114	54	10	1	0	0	0	0	0	0	0	0	0	0	362
09:00	176	108	30	4	1	0	0	0	0	0	0	0	0	0	0	319
10:00	170	98	38	7	1	0	0	0	0	0	0	1	0	0	0	313
11:00	159	113	47	6	0	0	0	0	0	0	0	0	0	0	0	325
12 PM	197	135	34	11	1	0	0	0	0	0	0	0	0	0	0	378
13:00	233	136	44	9	4	0	0	0	0	0	0	0	0	0	0	426
14:00	251	141	41	2	1	0	0	0	0	0	0	0	0	0	0	436
15:00	260	162	82	11	1	1	0	0	0	0	0	0	0	0	0	497
16:00	441	175	46	7	0	0	0	0	0	0	0	0	0	0	0	669
17:00	306	200	61	7	2	0	0	0	0	0	0	0	0	0	0	576
18:00	229	157	55	4	3	0	1	0	0	0	0	0	0	0	0	449
19:00	143	109	35	7	1	0	0	0	0	0	0	0	0	0	0	295
20:00	120	61	23	7	2	0	0	1	0	0	0	0	0	0	0	214
21:00	80	32	11	6	2	0	0	0	0	0	0	0	0	0	0	131
22:00	38	35	15	2	1	0	0	0	0	0	0	0	0	0	0	91
23:00	26	16	10	2	0	1	0	0	0	0	0	0	0	0	0	55
Total	3419	2122	755	141	33	4	1	1	0	0	0	1	0	0	0	6477

Daily
 15th Percentile : 9 MPH
 50th Percentile : 33 MPH
 85th Percentile : 39 MPH
 95th Percentile : 44 MPH
 Mean Speed(Average) : 28 MPH
 10 MPH Pace Speed : 36-45 MPH
 Number in Pace : 2877
 Percent in Pace : 44.4%
 Number of Vehicles > 30 MPH : 3548
 Percent of Vehicles > 30 MPH : 54.8%

Grand Total	6590	4325	1579	346	80	6	2	1	1	1	1	1	0	0	0	12932
-------------	------	------	------	-----	----	---	---	---	---	---	---	---	---	---	---	-------

Overall
 15th Percentile : 10 MPH
 50th Percentile : 34 MPH
 85th Percentile : 40 MPH
 95th Percentile : 44 MPH
 Mean Speed(Average) : 29 MPH
 10 MPH Pace Speed : 36-45 MPH
 Number in Pace : 5904
 Percent in Pace : 45.7%
 Number of Vehicles > 30 MPH : 7283
 Percent of Vehicles > 30 MPH : 56.3%

Old Colony Planning Council
 70 School Street
 Brockton, MA 02301
 (508) 583-1833
 www.ocpcrpa.org

Community: Avon
 Com#_URFC: 18_U6
 Recorder #: 22929
 Layout: L6 Basic (2)

Station ID:
 Site Code: 18
 Date Start: 01-May-19
 Date End: 02-May-19
 Central St, north of South St

NB, SB		Motorc	Cars & Trailer	2 Axle Long	Buses	2 Axle 6 Tire	3 Axle Single	4 Axle Single	<5 Axl Double	5 Axle Double	>6 Axl Double	<6 Axl Multi	6 Axle Multi	>6 Axl Multi	Total	Truck Total
05/02/19	0	32	4	0	4	0	0	0	0	0	0	0	0	0	40	4
01:00	0	29	8	0	1	0	0	0	0	0	0	0	0	0	35	1
02:00	0	8	0	0	2	0	0	0	0	0	0	0	0	0	10	2
03:00	0	9	2	0	1	0	0	0	0	0	0	0	0	0	12	1
04:00	0	16	4	0	0	0	0	0	0	0	0	0	0	0	20	0
05:00	0	71	19	0	7	0	0	0	0	0	0	0	0	0	97	7
06:00	0	252	50	0	18	1	0	2	0	0	0	0	0	0	323	21
07:00	0	328	55	2	16	2	0	1	0	0	0	0	0	0	404	21
08:00	0	278	64	0	17	1	1	1	0	0	0	0	0	0	352	20
08:00	1	254	56	0	8	0	0	0	0	0	0	0	0	0	318	8
10:00	0	251	48	1	12	0	0	0	0	0	0	0	0	0	313	13
11:00	3	252	55	1	14	0	0	0	0	0	0	0	0	0	325	15
12 PM	0	303	51	2	19	3	0	0	0	0	0	0	0	0	378	24
13:00	3	343	61	0	16	2	0	1	0	0	0	0	0	0	426	19
14:00	3	348	88	0	16	0	0	1	0	0	0	0	0	0	436	17
15:00	1	402	71	2	19	2	0	0	0	0	0	0	0	0	497	23
16:00	3	547	94	1	24	0	0	0	0	0	0	0	0	0	659	25
17:00	0	457	82	0	25	1	0	0	0	0	0	0	0	0	575	26
18:00	1	375	57	1	13	0	0	2	0	0	0	0	0	0	449	16
19:00	1	247	41	0	6	0	0	0	0	0	0	0	0	0	295	6
20:00	1	195	13	0	4	1	0	0	0	0	0	0	0	0	214	5
21:00	0	115	13	0	3	0	0	0	0	0	0	0	0	0	131	3
22:00	1	79	9	0	2	0	0	0	0	0	0	0	0	0	91	2
23:00	0	45	7	0	3	0	0	0	0	0	0	0	0	0	55	3
Total	18	5233	943	10	250	13	1	6	0	0	0	0	0	0	6476	282
Percent	0.3%	80.8%	14.6%	0.2%	3.9%	0.2%	0.0%	0.1%	0.0%	0.0%	0.0%	0.0%	0.0%	0.0%	64.76	4.4%
AM Peak	11:00	07:00	08:00	07:00	06:00	07:00	08:00	06:00							07:00	06:00
Vol.	3	328	64	2	18	2	1	2							404	21
PM Peak	13:00	16:00	16:00	12:00	17:00	12:00		18:00							16:00	17:00
Vol.	3	547	94	2	25	3		2							669	26
Grand Total	65	10441	1855	27	490	28	1	23	0	0	0	0	0	0	12830	589
Percent	0.5%	80.8%	14.3%	0.2%	3.8%	0.2%	0.0%	0.2%	0.0%	0.0%	0.0%	0.0%	0.0%	0.0%	64.76	4.4%

Road Safety Audit — Central Street – Avon
 Prepared by Old Colony Planning Council – *Final*

Old Colony Planning Council
 70 School Street
 Brockton, MA 02301
 (508) 583-1833
 www.ocpcrpa.org

Page 1

Community: Avon
 Conn#_UR/FC: 16_U5
 Recorder #: 25310
 Layout: 1.6 Basic (2)

Station ID:
 Site Code: 18
 Date Start: D1-May-19
 Date End: D2-May-19
 Central St. south of Crescent Ridge Ln

Start Time	29-Apr-19		Tue		Wed		Thu		Fri		Sat		Sun		Week Average	
	NB	SB	NB	SB	NB	SB	NB	SB	NB	SB	NB	SB	NB	SB	NB	SB
12:00 AM	*	*	*	*	8	13	19	57	*	*	*	*	*	*	14	35
01:00	*	*	*	*	5	6	15	47	*	*	*	*	*	*	10	26
02:00	*	*	*	*	5	6	9	25	*	*	*	*	*	*	7	16
03:00	*	*	*	*	5	1	4	14	*	*	*	*	*	*	4	8
04:00	*	*	*	*	12	5	2	10	*	*	*	*	*	*	7	8
05:00	*	*	*	*	67	11	3	4	*	*	*	*	*	*	35	8
06:00	*	*	*	*	157	36	3	5	*	*	*	*	*	*	80	20
07:00	*	*	*	*	142	54	7	3	*	*	*	*	*	*	74	28
08:00	*	*	*	*	120	64	59	11	*	*	*	*	*	*	90	38
09:00	*	*	*	*	88	87	174	27	*	*	*	*	*	*	131	57
10:00	*	*	*	*	88	114	166	49	*	*	*	*	*	*	127	82
11:00	*	*	*	*	92	111	119	74	*	*	*	*	*	*	106	92
12:00 PM	*	*	*	*	131	116	86	70	*	*	*	*	*	*	108	93
01:00	*	*	*	*	101	121	65	80	*	*	*	*	*	*	93	100
02:00	*	*	*	*	103	125	93	100	*	*	*	*	*	*	96	112
03:00	*	*	*	*	98	138	128	120	*	*	*	*	*	*	113	129
04:00	*	*	*	*	98	138	106	105	*	*	*	*	*	*	102	122
05:00	*	*	*	*	92	122	104	135	*	*	*	*	*	*	98	128
06:00	*	*	*	*	109	165	113	152	*	*	*	*	*	*	111	158
07:00	*	*	*	*	113	211	98	215	*	*	*	*	*	*	106	213
08:00	*	*	*	*	114	156	107	221	*	*	*	*	*	*	110	208
09:00	*	*	*	*	89	166	80	169	*	*	*	*	*	*	84	168
10:00	*	*	*	*	69	112	83	101	*	*	*	*	*	*	76	106
11:00	*	*	*	*	46	75	36	66	*	*	*	*	*	*	41	80
Lane Day	0	0	0	0	1952	2193	1869	1880	0	0	0	0	0	0	1825	2035
AM Peak Vol	-	-	-	-	05:00	10:00	09:00	11:00	-	-	-	-	-	-	05:00	11:00
PM Peak Vol	-	-	-	-	12:00	19:00	15:00	20:00	-	-	-	-	-	-	15:00	15:00
Comb. Total	0	0	0	0	4145	3579	0	0	0	0	0	0	0	0	3860	

Road Safety Audit — Central Street – Avon
 Prepared by Old Colony Planning Council – *Final*

Old Colony Planning Council
 70 School Street
 Brockton, MA 02301
 (508) 583-1833
 www.ocpcrpa.org

Page 6

Community: Avon
 Com#_UR/FC: 18_U6
 Recorder #: 25310
 Layout: L6 Basic (2')

Station ID:
 Site Code: 18
 Date Start: 01-May-19
 Date End: 02-May-19
 Central St. south of Crescent Ridge Ln

NB, SB

Start Time	1	36	41	46	51	56	61	66	71	76	81	86	91	96	Total
05:00	37	30	9	0	0	0	0	0	0	0	0	0	0	0	76
01:00	34	19	5	2	2	0	0	0	0	0	0	0	0	0	62
02:00	12	15	6	1	0	0	0	0	0	0	0	0	0	0	34
03:00	11	4	3	0	0	0	0	0	0	0	0	0	0	0	18
04:00	8	4	1	1	0	0	0	0	0	0	0	0	0	0	12
05:00	2	2	2	0	0	1	0	0	0	0	0	0	0	0	7
06:00	3	4	1	0	0	0	0	0	0	0	0	0	0	0	8
07:00	7	1	1	1	0	0	0	0	0	0	0	0	0	0	10
08:00	37	16	10	4	2	1	0	0	0	0	0	0	0	0	70
09:00	100	70	23	6	0	0	0	0	0	0	0	0	0	0	201
10:00	115	72	28	2	0	0	0	0	0	0	0	0	0	0	215
11:00	82	84	22	1	4	0	0	0	0	0	0	0	0	0	193
12 PM	39	42	14	1	0	0	0	0	0	0	0	0	0	0	158
13:00	100	48	15	2	0	0	0	0	0	0	0	0	0	0	165
14:00	113	80	19	1	0	0	0	0	0	0	0	0	0	0	193
15:00	161	71	13	3	0	0	0	0	0	0	0	0	0	0	248
16:00	128	75	7	0	1	0	0	0	0	0	0	0	0	0	211
17:00	132	80	24	2	1	0	0	0	0	0	0	0	0	0	239
18:00	146	87	26	6	0	0	0	0	0	0	0	0	0	0	265
19:00	171	106	33	3	0	0	0	0	0	0	0	0	0	0	313
20:00	196	107	23	1	0	1	0	0	0	0	0	0	0	0	329
21:00	152	72	22	2	1	0	0	0	0	0	0	0	0	0	249
22:00	109	58	16	2	0	1	0	0	0	0	0	0	0	0	184
23:00	74	34	12	2	0	0	0	0	0	0	0	0	0	0	122
Total	2027	1159	333	45	11	4	0	0	0	0	0	0	0	0	3579

Daily
 15th Percentile : 9 MPH
 50th Percentile : 30 MPH
 85th Percentile : 38 MPH
 95th Percentile : 43 MPH
 Mean Speed(Average) : 27 MPH
 10 MPH Pace Speed : 36-45 MPH
 Number in Pace : 1492
 Percent in Pace : 41.7%
 Number of Vehicles > 30 MPH : 1842
 Percent of Vehicles > 30 MPH : 51.5%

Grand Total	4351	2565	676	108	15	7	2	0	0	0	0	0	0	0	7724
-------------	------	------	-----	-----	----	---	---	---	---	---	---	---	---	---	------

Overall
 15th Percentile : 9 MPH
 50th Percentile : 31 MPH
 85th Percentile : 38 MPH
 95th Percentile : 43 MPH
 Mean Speed(Average) : 27 MPH
 10 MPH Pace Speed : 36-45 MPH
 Number in Pace : 3241
 Percent in Pace : 42.0%
 Number of Vehicles > 30 MPH : 3995
 Percent of Vehicles > 30 MPH : 51.7%

Old Colony Planning Council
70 School Street
Brockton, MA 02301
(508) 583-1833
www.ocpcrpa.org

Community: Avon
 Com#_UR/FC: 18_U6
 Recorder #: 25310
 Layout: L6 Basic (2')

Station ID:
 Site Code: 44
 Date Start: 01-May-19
 Date End: 02-May-19
 Central St, south of Crescent Ridge Ln

NB, SB		Start	Cars & Trailer	2 Axle Long	2 Axle 6 Tire	3 Axle Single	4 Axle Single	<5 Axl Double	5 Axle Double	>6 Axl Double	<6 Axl Multi	6 Axle Multi	>6 Axl Multi	Total	Truck Total
05/02/19	0	63	11	0	2	0	0	0	0	0	0	0	0	76	2
01:00	1	55	6	0	0	0	0	0	0	0	0	0	0	62	0
02:00	1	27	4	0	1	1	0	0	0	0	0	0	0	34	2
03:00	0	14	3	0	1	0	0	0	0	0	0	0	0	18	1
04:00	0	12	0	0	0	0	0	0	0	0	0	0	0	12	0
05:00	0	7	0	0	0	0	0	0	0	0	0	0	0	7	0
06:00	0	7	1	0	0	0	0	0	0	0	0	0	0	8	0
07:00	0	8	2	0	0	0	0	0	0	0	0	0	0	10	0
08:00	0	48	20	0	2	0	0	0	0	0	0	0	0	70	2
09:00	2	155	42	0	2	0	0	0	0	0	0	0	0	201	2
10:00	0	158	42	3	11	0	0	0	0	0	0	0	0	215	14
11:00	2	164	21	0	5	1	0	0	0	0	0	0	0	193	6
12 PM	0	121	29	0	3	0	0	3	0	0	0	0	0	156	6
13:00	0	126	29	0	10	0	0	0	0	0	0	0	0	165	10
14:00	0	151	36	0	5	1	0	0	0	0	0	0	0	193	6
15:00	0	195	44	0	8	0	0	1	0	0	0	0	0	246	8
16:00	3	167	35	1	4	1	0	0	0	0	0	0	0	211	6
17:00	2	193	36	2	6	0	0	0	0	0	0	0	0	239	8
18:00	2	208	48	1	4	1	0	0	1	0	0	0	0	265	7
19:00	1	245	56	0	10	1	0	0	0	0	0	0	0	313	11
20:00	0	273	49	0	6	0	0	0	0	0	0	0	0	328	6
21:00	0	203	35	1	9	1	0	0	0	0	0	0	0	249	11
22:00	0	182	20	0	2	0	0	0	0	0	0	0	0	184	2
23:00	0	103	17	0	2	0	0	0	0	0	0	0	0	122	2
Total	14	2868	586	8	93	7	0	4	1	0	0	0	0	3579	113
Percent	0.4%	80.1%	16.4%	0.2%	2.6%	0.2%	0.0%	0.1%	0.0%	0.0%	0.0%	0.0%	0.0%		3.2%
AM Peak	09:00	11:00	09:00	10:00	10:00	02:00								10:00	10:00
Vol.	2	164	42	3	11	1								215	14
PM Peak	18:00	20:00	19:00	17:00	13:00	14:00		12:00	18:00					20:00	19:00
Vol.	3	273	56	2	10	1		3	1					328	11
Grand Total	32	6176	1288	26	197	15	0	9	1	0	0	0	0	7724	248
Percent	0.4%	80.0%	16.4%	0.3%	2.8%	0.2%	0.0%	0.1%	0.0%	0.0%	0.0%	0.0%	0.0%		3.2%

Road Safety Audit — Central Street – Avon
 Prepared by Old Colony Planning Council – *Final*

Old Colony Planning Council
 70 School Street
 Brockton, MA 02301
 (508) 583-1833
 www.ocpcpa.org

Page 1

Community: Avon
 Corridors: UR/FC, 18, U5
 Recorder #: 22926
 Layout: L6 Basic (2)

Station ID:
 Site Code: 18
 Date Start: 01-May-19
 Date End: 02-May-19
 Central St. south of Old Pond St

Start Time	29-Apr-19		Tue		Wed		Thu		Fri		Sat		Sun		Week Average	
	NB	SB	NB	SB	NB	SB	NB	SB	NB	SB	NB	SB	NB	SB	NB	SB
12:00 AM	*	*	*	*	8	11	8	11	*	*	*	*	*	*	8	11
01:00	*	*	*	*	3	3	2	11	*	*	*	*	*	*	2	7
02:00	*	*	*	*	5	5	2	4	*	*	*	*	*	*	4	4
03:00	*	*	*	*	5	2	5	3	*	*	*	*	*	*	5	2
04:00	*	*	*	*	12	6	12	4	*	*	*	*	*	*	12	5
05:00	*	*	*	*	66	11	64	13	*	*	*	*	*	*	65	12
06:00	*	*	*	*	148	40	136	25	*	*	*	*	*	*	142	32
07:00	*	*	*	*	135	62	119	55	*	*	*	*	*	*	127	58
08:00	*	*	*	*	112	64	95	76	*	*	*	*	*	*	104	70
09:00	*	*	*	*	81	79	82	71	*	*	*	*	*	*	82	75
10:00	*	*	*	*	83	115	109	91	*	*	*	*	*	*	96	103
11:00	*	*	*	*	94	112	102	102	*	*	*	*	*	*	98	107
12:00 PM	*	*	*	*	132	112	125	123	*	*	*	*	*	*	128	118
01:00	*	*	*	*	100	118	126	113	*	*	*	*	*	*	113	116
02:00	*	*	*	*	105	143	100	147	*	*	*	*	*	*	102	145
03:00	*	*	*	*	111	150	99	173	*	*	*	*	*	*	105	182
04:00	*	*	*	*	107	189	122	225	*	*	*	*	*	*	114	207
05:00	*	*	*	*	58	200	103	247	*	*	*	*	*	*	100	224
06:00	*	*	*	*	50	154	106	153	*	*	*	*	*	*	98	158
07:00	*	*	*	*	73	103	60	113	*	*	*	*	*	*	66	108
08:00	*	*	*	*	44	85	47	84	*	*	*	*	*	*	46	84
09:00	*	*	*	*	30	68	21	55	*	*	*	*	*	*	26	62
10:00	*	*	*	*	16	34	15	35	*	*	*	*	*	*	16	34
11:00	*	*	*	*	8	31	7	27	*	*	*	*	*	*	8	29
Lane Day	0	0	0	0	1866	1947	1667	1961	0	0	0	0	0	0	1667	1953
AM Peak Vol.	-	-	-	-	06:00	10:00	06:00	11:00	-	-	-	-	-	-	06:00	11:00
PM Peak Vol.	-	-	-	-	148	115	136	102	-	-	-	-	-	-	142	107
Week Peak Vol.	-	-	-	-	132	200	126	247	-	-	-	-	-	-	128	224
Comb Total	0	0	0	0	3613	3628	0	0	0	0	0	0	0	0	3620	

Old Colony Planning Council
70 School Street
Brockton, MA 02301
(508) 583-1833
www.ocpcrpa.org

Community: Avon
 Com#_UR/FC: 18_U6
 Recorder #: 22926
 Layout: L6 Basic (2')

Station ID:
 Site Code: 18
 Date Start: 01-May-19
 Date End: 02-May-19
 Central St, south of Old Pond St

NB, SB

Start Time	1	36	41	46	51	56	61	66	71	76	81	86	91	96	Total
05/02/19	5	9	3	2	0	0	0	0	0	0	0	0	0	0	19
01:00	7	4	2	0	0	0	0	0	0	0	0	0	0	0	13
02:00	1	3	0	2	0	0	0	0	0	0	0	0	0	0	6
03:00	7	1	0	0	0	0	0	0	0	0	0	0	0	0	9
04:00	9	3	3	1	0	0	0	0	0	0	0	0	0	0	16
05:00	40	27	7	2	1	0	0	0	0	0	0	0	0	0	77
06:00	85	53	22	1	0	0	0	0	0	0	0	0	0	0	161
07:00	102	62	7	3	0	0	0	0	0	0	0	0	0	0	174
08:00	109	53	9	0	0	0	0	0	0	0	0	0	0	0	171
09:00	104	42	4	2	0	1	0	0	0	0	0	0	0	0	153
10:00	141	49	9	0	1	0	0	0	0	0	0	0	0	0	200
11:00	136	60	8	0	0	0	0	0	0	0	0	0	0	0	204
12 PM	184	49	11	3	1	0	0	0	0	0	0	0	0	0	248
13:00	153	67	17	2	0	0	0	0	0	0	0	0	0	0	239
14:00	150	81	15	1	0	0	0	0	0	0	0	0	0	0	247
15:00	160	87	21	3	1	0	0	0	0	0	0	0	0	0	272
16:00	223	94	25	4	1	0	0	0	0	0	0	0	0	0	347
17:00	202	114	29	6	0	0	0	0	0	0	0	0	0	0	350
18:00	152	81	23	2	0	1	0	0	0	0	0	0	0	0	259
19:00	92	83	12	3	1	2	0	0	0	0	0	0	0	0	173
20:00	61	52	16	2	0	0	0	0	0	0	0	0	0	0	131
21:00	34	27	10	1	2	1	1	0	0	0	0	0	0	0	76
22:00	22	18	5	4	1	0	0	0	0	0	0	0	0	0	50
23:00	11	17	3	1	1	1	0	0	0	0	0	0	0	0	34
Total	2190	1116	260	45	10	6	1	0	0	0	0	0	0	0	3628

Daily
 15th Percentile : 8 MPH
 50th Percentile : 28 MPH
 85th Percentile : 39 MPH
 95th Percentile : 42 MPH
 Mean Speed(Average) : 26 MPH
 10 MPH Pace Speed : 31-40 MPH
 Number in Pace : 1429
 Percent in Pace : 39.4%
 Number of Vehicles > 30 MPH : 1751
 Percent of Vehicles > 30 MPH : 48.3%

Grand Total	4158	2331	615	107	19	10	1	0	0	0	0	0	0	0	7241
--------------------	-------------	-------------	------------	------------	-----------	-----------	----------	----------	----------	----------	----------	----------	----------	----------	-------------

Overall
 15th Percentile : 9 MPH
 50th Percentile : 30 MPH
 85th Percentile : 39 MPH
 95th Percentile : 43 MPH
 Mean Speed(Average) : 27 MPH
 10 MPH Pace Speed : 36-45 MPH
 Number in Pace : 2946
 Percent in Pace : 40.7%
 Number of Vehicles > 30 MPH : 3677
 Percent of Vehicles > 30 MPH : 50.8%

Old Colony Planning Council
70 School Street
Brockton, MA 02301
(508) 583-1833
www.ocpcrpa.org

Community: Avon
 Com#_UR/FC: 18_U6
 Recorder #: 22926
 Layout: L6 Basic (2')

Station ID:
 Site Code: 18
 Date Start: 01-May-19
 Date End: 02-May-19
 Central St. south of Old Pond St

NB, SB		Motorc	Cars & Trailer	2 Axle Long	Buses	2 Axle 6 Tire	3 Axle Single	4 Axle Single	<5 Axl Double	5 Axle Double	>6 Axl Double	<6 Axl Multi	6 Axle Multi	>6 Axl Multi	Total	Truck Total
05/02/19	0	17	1	0	0	1	0	0	0	0	0	0	0	0	19	1
01:00	0	7	4	0	0	2	0	0	0	0	0	0	0	0	13	2
02:00	0	6	0	0	0	0	0	0	0	0	0	0	0	0	6	0
03:00	0	7	1	0	0	0	0	0	0	0	0	0	0	0	8	0
04:00	0	14	2	0	0	0	0	0	0	0	0	0	0	0	16	0
05:00	0	58	17	0	0	2	0	0	0	0	0	0	0	0	77	2
06:00	0	134	22	0	0	5	0	0	0	0	0	0	0	0	161	5
07:00	0	143	22	3	0	5	0	0	1	0	0	0	0	0	174	9
08:00	1	129	31	1	0	8	0	0	1	0	0	0	0	0	171	10
08:00	1	122	24	0	0	6	0	0	0	0	0	0	0	0	153	6
10:00	0	166	26	1	0	7	0	0	0	0	0	0	0	0	200	8
11:00	0	163	36	1	0	4	0	0	0	0	0	0	0	0	204	6
12 PM	0	196	39	1	0	12	0	0	0	0	0	0	0	0	248	13
13:00	2	193	29	0	0	12	3	0	0	0	0	0	0	0	239	15
14:00	0	183	47	2	0	15	0	0	0	0	0	0	0	0	247	17
15:00	0	208	40	2	0	21	0	0	0	0	0	0	0	0	272	23
16:00	2	270	61	0	0	12	0	0	2	0	0	0	0	0	347	14
17:00	0	285	48	0	0	16	1	0	0	0	0	0	0	0	350	17
18:00	0	224	27	1	0	6	0	0	1	0	0	0	0	0	259	8
19:00	0	147	23	0	0	3	0	0	0	0	0	0	0	0	173	3
20:00	0	112	16	0	0	3	0	0	0	0	0	0	0	0	131	3
21:00	0	68	6	0	0	2	0	0	0	0	0	0	0	0	76	2
22:00	0	40	9	0	0	1	0	0	0	0	0	0	0	0	50	1
23:00	0	29	4	0	0	1	0	0	0	0	0	0	0	0	34	1
Total	6	2922	535	12	0	144	4	0	5	0	0	0	0	0	3628	165
Percent	0.2%	80.5%	14.7%	0.3%	0.0%	4.0%	0.1%	0.0%	0.1%	0.0%	0.0%	0.0%	0.0%	0.0%		4.5%
AM Peak	08:00	10:00	11:00	07:00	08:00				07:00						11:00	08:00
Vol.	1	166	36	3	8				1						204	10
PM Peak	13:00	17:00	16:00	14:00	15:00	13:00			16:00						17:00	15:00
Vol.	2	285	61	2	21	3			2						350	23
Grand Total	20	5795	1095	31	283	7	0	10	0	0	0	0	0	0	7241	331
Percent	0.3%	80.0%	15.1%	0.4%	3.9%	0.1%	0.0%	0.1%	0.0%	0.0%	0.0%	0.0%	0.0%	0.0%		4.6%

Appendix E. Road Safety Audit References

Road Safety Audit References

FHWA Office of Safety - Proven Safety Countermeasures, U.S. Department of Transportation, Federal Highway Administration <https://safety.fhwa.dot.gov/provencountermeasures/>.

Road Safety Audits, A Synthesis of Highway Practice. NCHRP Synthesis 336. Transportation Research Board, National Cooperative Highway Research Program, 2004.

Road Safety Audits. U.S. Department of Transportation, Federal Highway Administration, <https://safety.fhwa.dot.gov/rsa/>

FHWA Road Safety Audit Guidelines. U.S. Department of Transportation, Federal Highway Administration, 2006.

Road Safety Audit, 2nd edition. Austroads, 2000.

Road Safety Audits. ITE Technical Council Committee 4S-7. Institute of Transportation Engineers, February 1995.