

ROAD SAFETY AUDIT

Washington Street (Route 138) at Elm Street

Town of Easton

July 13, 2009

Prepared For:
Massachusetts Highway Department



Prepared By:
BETA Group, Inc.

BETA Group, Inc.
Engineers • Scientists • Planners

315 Norwood Park South, Norwood, MA 02062
Lincoln, RI & Rocky Hill, CT
email: BETA@BETA-inc.com

Table of Contents

Project Data	1
Background	2
Project Description	2
Audit Observations	5
Potential Safety Enhancements	6
Summary of Road Safety Audit	12

List of Appendices

Appendix A.	RSA Meeting Agenda
Appendix B.	RSA Audit Team Contact List
Appendix C.	Detailed Crash Data
Appendix D.	Traffic Volume Data

List of Figures

Figure 1.	Locus Map.....	4
-----------	----------------	----------

List of Tables

Table 1.	Participating Audit Team Members	1
Table 2.	Estimated Time Frame and Costs Breakdown	6
Table 3.	Potential Safety Enhancement Summary	13

Project Data

A Road Safety Audit for the intersection of Washington Street (Route 138) and Elm Street in the Town of Easton was held on July 13, 2009 at the Easton Town Hall. As indicated in Table 1, the audit team consisted of representatives from Federal, State, Regional and Local agencies and included a cross-section of engineering, planning, emergency response and legislative expertise.

Table 1. Participating Audit Team Members

Audit Team Member	Agency/Affiliation
Bonnie Polin	MassHighway – Safety Section
Lisa Schletzbaum	MassHighway – Safety Section
Carrie Lavallee	MassHighway – Project Management
Charles Kilmer	Old Colony Planning Council
Ray Guarino	Old Colony Planning Council
Bill McNulty	Old Colony Planning Council
Kyle Mowatt	Old Colony Planning Council
David Colton	Town Administrator, Town of Easton
Wayne Southworth	DPW Director, Town of Easton
Colleen Corona	Chair, Board of Selectmen, Town of Easton
Alice Savage	Planning Director, Town of Easton
Allen Krajcik	Police Chief, Town of Easton
Thomas Stone	Fire Chief, Town of Easton
Tim White	Federal Highway Administration
Ken Petraglia	BETA Group
Greg Lucas	BETA Group
John Mirabito	BETA Group
Rep. Christine Canavan	Legislature
Rep. David Flynn	Legislature
Benjamin Janelli	Legislature – Rep. Creedon's Office
Bill Travers	MassHighway – District 5 Projects
Edward Feeney	MassHighway – District 5 Traffic
Bob Stathopoulos	MassHighway – Traffic Engineering
Maurice Goulet	DPW Operations Manager, Town of Easton
Joanne Weinstock	Mass EOT - Planning
Dolores Kent	Easton Council on Aging

Please note that there were additional attendees who did not participate in audit activities.

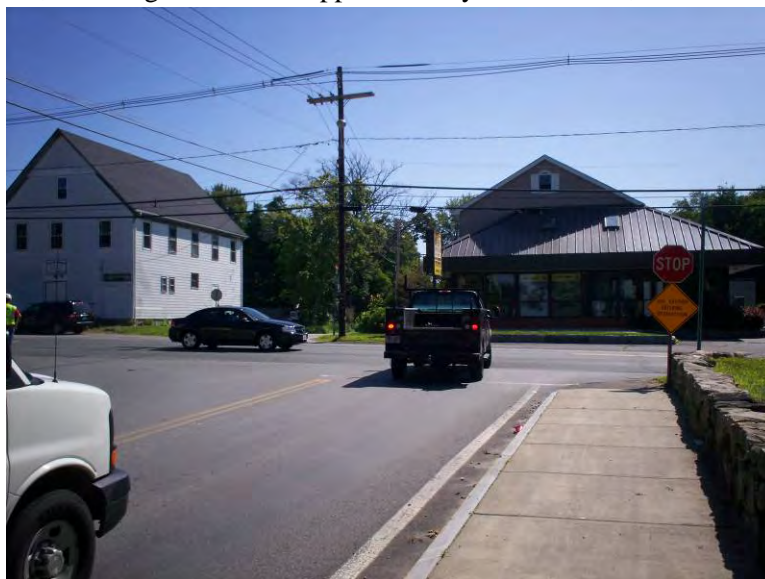
Background

The Federal Highway Administration defines a Road Safety Audit (RSA) as *the formal safety examination* of an existing or future road or intersection by an *independent, multidisciplinary team*. The purpose of an RSA is to *identify potential safety issues and possible opportunities for safety improvements* considering all roadway users. The Old Colony Planning Council (OCPC) requested that MassHighway conduct a Road Safety Audit of three intersections within the Town of Easton, one of which is the intersection of Washington Street (Route 138) and Elm Street. The intersection has been identified by OCPC as a high crash location within the Town. As such, an RSA was conducted in order to identify both short and long term safety improvements that can be made at the subject intersection.

Project Description

The intersection of Washington Street (Route 138) and Elm Street, shown in Figure 1, is located in the northeast portion of Easton. Washington Street is a state-owned roadway functionally classified as an Urban Minor Arterial. Elm Street is a town-owned roadway functionally classified as an Urban Collector. Washington Street is a significant regional roadway, connecting Easton with neighboring communities Stoughton and Raynham. Route 138 provides access to I-495 to the south and runs parallel to Route 24. As such, Route 138 becomes a preferred alternative route when delays exist on Route 24. Several intersecting roadways provide access to Route 24 to the east.

The intersection of Washington Street (Route 138) and Elm Street provides a single lane of travel on all approaches. In the vicinity of the intersection, Washington Street is approximately 40 feet wide, with 12 foot lanes and 8 foot shoulders on both approaches. Elm Street west of the intersection is approximately 30 feet wide, with 15 foot lanes. Elm Street east of the intersection is approximately 24 feet in width, with 12 foot lanes. Both Elm Street approaches have striped edge lines to delineate the edge of pavement. There is a sidewalk on Elm Street approaching Washington Street from the west, but no other sidewalks or handicap accessible pedestrian facilities. There are no crosswalks at the intersection. The Elm Street approaches are offset from one another, which requires Elm Street through traffic to make two turning movements.



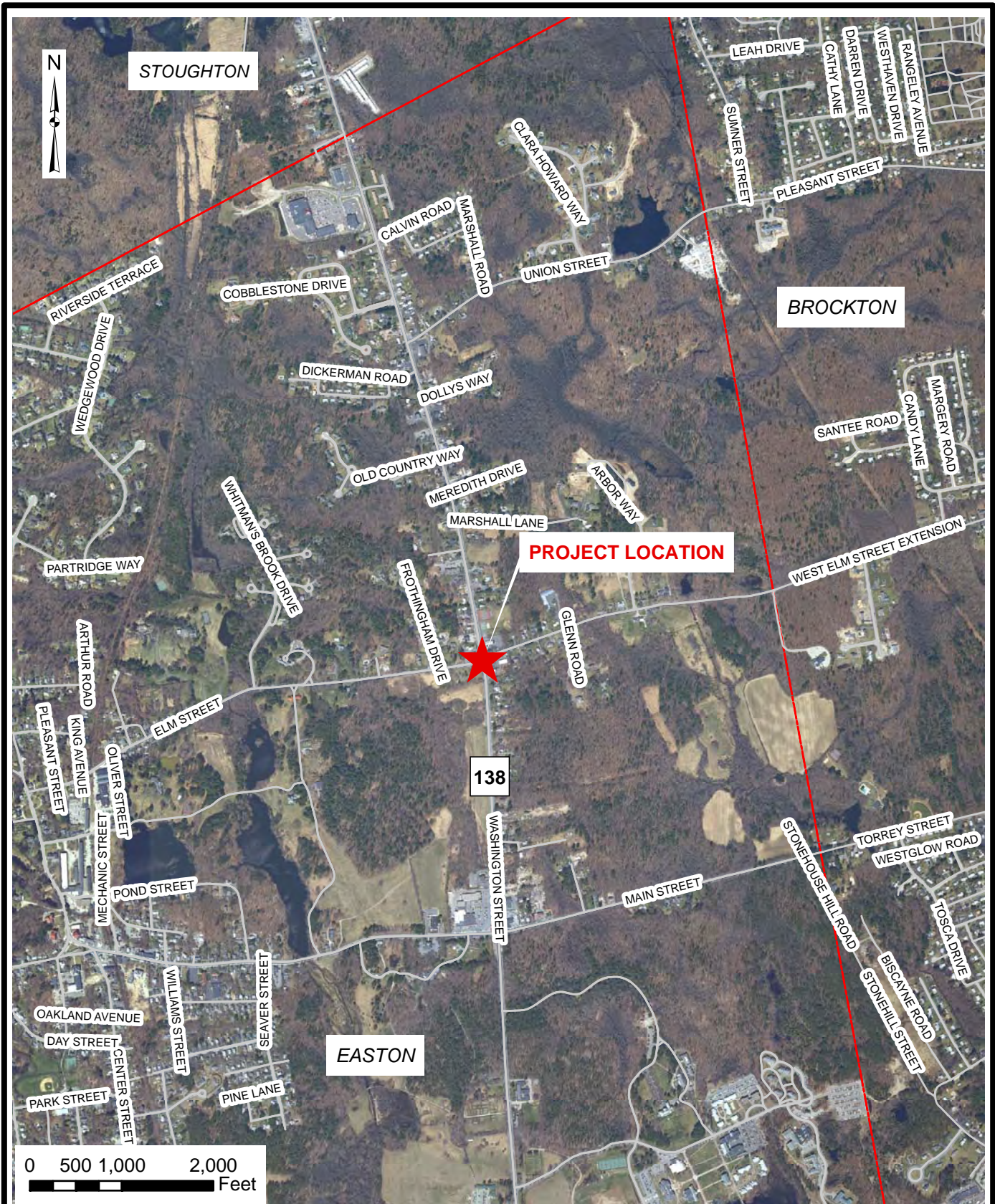
Eastbound Elm Street approach at Washington Street

The surrounding area is a mix of commercial and residential use. Several businesses in the area have been converted from former residential properties. The Washington Street Cemetery is on the southwest corner of the intersection. Elm Street provides access from Route 138 to the Easton Town Hall, which is approximately 1/3 mile west of Route 138.

The posted speed limit on Washington Street is 40 MPH. Speed data for Washington Street provided by OCPC showed an average speed of 42 MPH and an 85th percentile speed of 49 MPH. The 85th percentile speed is defined as the speed at which 85 percent of the traffic is traveling at or below. The posted speed limit on both legs of Elm Street is 30 MPH. West of Washington Street, vehicles on Elm Street are traveling at an average speed of 38 MPH and an 85th percentile speed of 44 MPH. East of Washington Street, vehicles on Elm Street are traveling at an average speed of 33 MPH and an 85th percentile speed of 39 MPH.

Crash data were provided by the Easton Police Department for three years and are included in the Appendix. There were a total of 18 crashes at the intersection within the three year period. The data show a prevalence of angle-type collisions between vehicles exiting Elm Street and through vehicles on Washington Street. The crash summary shows that half of the crashes (9 out of 18) occurred when a vehicle failed to yield the right of way. OCPC calculated a crash rate of 0.928 crashes per million entering vehicles (MEV) at this intersection as part of their 2007 *Easton State Numbered Routes Study*. This is considerably higher than the District 5 average of 0.58 for unsignalized intersections.

Automatic Traffic Recorder (ATR) counts and Manual Turning Movement (MTM) counts were provided by OCPC. ATR data were recorded in 2006 for Washington Street and in 2008 for Elm Street. Washington Street (Route 138) carries 17,000 vehicles per day (vpd). Elm Street carries 3,900 vpd west of Washington Street and 1,630 vpd east of Washington Street. MTM data were recorded in 2005 for the AM peak period and in 2006 for the PM peak period. The AM peak hour occurred from 7:30 to 8:30 AM. During the AM peak hour, there were 85 left turns from Elm Street eastbound to Washington Street northbound, against 1,306 through vehicles on Washington Street (919 northbound, 387 southbound). The PM peak hour occurred from 4:45 to 5:45 PM. During the PM peak hour, there were 66 left turns from Elm Street eastbound to Washington Street northbound, against 1,285 through vehicles on Washington Street (531 northbound, 754 southbound). These conflicting volumes, combined with the high speed of travel on Washington Street, provide very few acceptable gaps for those turning vehicles. OCPC performed capacity analysis at this intersection as part of their 2007 *Easton State Numbered Routes Study*. The analyses showed that the intersection operates at Level of Service “F” during the morning and afternoon peak hours.



BETA Group, Inc.
 Engineers • Scientists • Planners

315 Norwood Park South
 Norwood, MA 02062
 781.255.1982
 BETA@BETA-inc.com

Washington Street (Route 138)
 At Elm Street

ROAD SAFETY AUDIT

EASTON, MA

Figure 1
Location Map

Audit Observations

Following a brief introduction to the RSA process and a summary of traffic volumes and crash information, the audit participants were asked to discuss issues that may affect safety at the intersection of Washington Street (Route 138) and Elm Street. Audit participants then conducted a site visit as a group, at which time they offered observations on safety concerns and deficiencies. A summary of those major safety considerations is as follows:

- Sight Distance – This was a concern for both Elm Street approaches. Visibility to the south is restricted by signage as well as by vegetation along the westerly side of Washington Street bordering the Washington Street Cemetery. There is a horizontal curve in the roadway south of the intersection which also restricts sight distance both for vehicles exiting Elm Street and for vehicles traveling northbound on Washington Street.
- Speed – Speed was cited as a major contributor to safety issues at the intersection. Travel speeds along Washington Street (Route 138) in conjunction with high traffic volumes create few adequate gaps for vehicles exiting Elm Street. As such, drivers are more likely to use inadequate gaps, which can contribute to the angle-type crashes at the intersection.
- Left turning vehicles – This is a multi-faceted safety concern at the intersection. Some audit participants suggested that the lack of left turn lanes on Washington Street creates an operational and safety concern at the intersection. Others stated that the tendency of through vehicles to use the shoulder to pass left turning vehicles on the right creates a safety hazard. Vehicles exiting Elm Street may not see or may not anticipate a vehicle making a passing movement in the shoulder.
- Wide Undefined Pavement – This was discussed in conjunction with both speed and left turning vehicles. Despite having single lane approaches, the roadway width combined with a lack of curbing or berm to delineate the edge of roadway creates an opportunity for vehicles to pass turning vehicles and create additional conflict points for other vehicles navigating the intersection. Additionally, the lack of defined driveway openings creates the appearance of a wide expanse of pavement, which could contribute to increased speeds.
- Driver Confusion – The offset alignment of the two Elm Street approaches creates some confusion for drivers as they approach the intersection. Since an Elm Street through movement requires a short left turn followed by a short right turn, some drivers may erroneously use turn signals when their intent is to go straight across the intersection. Consumer GPS units may contribute to this problem, as they will often characterize such a movement as a left turn followed by a right turn and may convince the driver to use their turn signal.
- Passing Zones – There is a passing zone in both directions on Washington Street which ends approximately 250 feet north of the intersection. There is a passing zone for

southbound traffic that begins immediately south of the intersection. The potential exists for passing maneuvers to extend through the intersection, especially at night when traffic volumes are lower and the intersection is less visible to Washington Street traffic.

- Pedestrian accommodations – There is an existing sidewalk on the south side of Elm Street west of Washington Street that ends at Washington Street, with no other pedestrian facilities in the vicinity of the intersection. Several audit participants suggested that pedestrian traffic has increased in the area. There is a park on Washington Street north of Elm Street that may generate pedestrian traffic. The Easton Police Department reported that there was a pedestrian fatality on Washington Street north of Elm Street.

Potential Safety Enhancements

After the site visit, audit participants returned to the meeting location to discuss the safety issues and consider improvements. Audit participants were encouraged to consider both short and long term improvements for each issue. Each improvement considered has been categorized as short-term, mid-term, or long-term based on the definitions shown in Table 2. Additionally, a cost category has been assigned to each improvement based on the parameters set forth in Table 2.

Table 2. Estimated Time Frame and Costs Breakdown

Time Frame		Costs	
Short-term	<1 year	Low	<\$10,000
Mid-term	1–3 years	Medium	\$10,001–\$50,000
Long-term	>3 years	High	>\$50,000

Sight Distance

The following improvements were suggested by audit participants to alleviate sight distance concerns at the intersection of Washington Street (Route 138) and Elm Street. As previously discussed, audit participants primarily focused on the sight distance deficiencies for vehicles traveling eastbound on Elm Street as they look south on Washington Street. The first three recommendations all consider improvements related to this approach.

- Remove tree along wall. This is a low cost, short term improvement. There is a mature tree approximately 125 feet south of the intersection, behind a stone wall which borders the Washington Street cemetery. Removing this tree would allow increased visibility in the sight triangle for Elm Street eastbound and Washington Street northbound vehicles.



Existing Sight Distance Obstructions looking Southbound

- Reset town sign. This is also a low cost, short term improvement. The sign is located on the southwest corner of the intersection and directs motorists to the Easton Town Offices and the Easton Historical Society from both directions. The signs should be separated and reset on posts on the right side of the road in advance of the intersection on both Washington Street approaches.

- Remove vegetation on wall. This is also a low cost, short term improvement. A grass berm rises to the top of the stone wall bordering the Washington Street cemetery. There are shrubs approximately 5-6' tall growing immediately behind the wall which are overgrowing the top of the wall. Trimming or removing these shrubs and related undergrowth would improve visibility in the sight triangle for Elm Street eastbound and Washington Street northbound vehicles.

- Sidewalks. This would be a mid-term and high cost improvement. Sidewalks could be constructed along either side of Washington Street. An Easton town official suggested a sidewalk on the east side of Washington Street, which would be consistent with the roadway layout further south on Washington Street. If a sidewalk is constructed on the east side independent of traffic signal installation, this would require the addition of a crosswalk across Washington Street to allow pedestrian connection to the existing sidewalk on the south side of the west leg of Elm Street. Although sidewalks could be constructed while maintaining the existing roadway width, the greatest benefit to sight distance at the intersection would be realized if sidewalks are constructed in conjunction with roadway narrowing. This would allow increased visibility to the south along Washington Street.

- Enforce No Parking on shoulder. The wide shoulder along Washington Street provides enough space for vehicles to park; however, Washington



Street is state highway and therefore parking is prohibited. This is a low cost improvement that can be implemented immediately by means of enforcement, or in the short term by adding R8-1a “STATE HIGHWAY – PARKING PROHIBITED” signs.

Speed

Speed was suggested as a significant issue relating to safety deficiencies at the intersection, typically in conjunction with other issues. Recommendations to alleviate speed concerns at the intersection are as follows:

- **Enforcement.** Enforcement by Easton police could help reduce speeding along the Washington Street (Route 138) corridor. This would be a low cost, short term improvement. It was noted by the police department that the speed limit is appropriate for the corridor, given the 85th percentile speeds recorded.
- **Install additional Speed Limit signage.** The speed limit along the Washington Street corridor is 40 MPH in the vicinity of the intersection with Elm Street, although there are no posted speed limit signs near the intersection. It is recommended that R2-1 speed limit signs be installed noting the 40 MPH limit approximately 1000 feet in advance of the intersection in both directions. This is a low cost, short term improvement.
- **Sidewalk.** Sidewalks can help reduce speeds by providing a barrier curb along the edge of roadway, which reduces the appearance of a wide shoulder. Sidewalks could also be constructed in conjunction with roadway narrowing. Sidewalks are a mid-term, high cost improvement.
- **Rumble Strip.** It was suggested that a rumble strip could be installed along the Washington Street shoulder, which would deter the use of the shoulder for through vehicles passing left-turning vehicles at the intersection. MassHighway Policy Directive P-04-001 allows rumble strips only on full access control highways and on state roadways with a posted speed greater than 40 MPH in non-residential areas. Therefore, rumble strips would not be allowed on Washington Street in the study area.
- **Time of day “No Left Turn” Restrictions.** This was suggested by an audit participant, but is not recommended. Drivers would be forced to find alternate routes which may create additional safety deficiencies at another location, or they would simply ignore the restriction due to the lack of a convenient alternate route.

Wide Undefined Pavement

Improvements related to the safety issues of left-turning vehicles and lack of channelization/access management are presented in tandem because they were considered interrelated issues during the discussion. For example, a left-turning vehicle by itself is not a safety concern, but potentially contributes to a safety concern when a through vehicle passes it on the right without reducing its speed.

Recommendations are as follows:

- Narrow shoulder. Narrowing the shoulder on Washington Street (Route 138) would restrict the space available for through vehicles to pass turning vehicles on the right. It should be noted that narrowing the shoulder may provide unintended impedances to traffic signal design. The discussion of reducing pavement widths then evolved into a discussion of methods by which this could be accomplished.
 - Sidewalks. Sidewalks were discussed as a potential improvement for sight distance, but could provide the dual benefit of reducing the available pavement width for Washington Street. This in turn would require defined driveway aprons for abutter access, which would reduce or eliminate the expanses of open pavement which exist today. Sidewalks are a mid-term, high cost improvement.
 - Curb/berm. Curbing would be required in conjunction with sidewalk construction to provide protection for pedestrians, but curbing could also be installed without sidewalks to provide roadway narrowing and delineation along Washington Street. This would also require defined driveway openings for abutter access. Type “A” (Cape Cod) berm could be considered as an alternative to curbing. The benefit of berm is that it is mountable for turning trucks, but provides less benefit as a visible, vertical barrier. Curbing and berm would be a short- or mid-term, medium cost improvement.

While considering access for truck turns during the discussion of curb or berm installation, the implementation of a truck exclusion on Elm Street was proposed as a safety improvement. This is a low cost, short-term improvement, but would require a study before implementation to verify the percentage of truck travel and to ensure that viable alternative routes exist for truck traffic. Even if a truck exclusion was provided on Elm Street, the intersection would still need to provide for truck turns for emergency access and for vehicles with origins or destinations on Elm Street.

- Left turn lanes on Washington Street. Providing left turn lanes would separate left-turning vehicles and provide a continuous travel lane for through vehicles in both directions. This could be accomplished within the existing pavement width, but would reduce shoulder widths from 8 feet to 2 feet in each direction. Although the provision of a continuous through lane would remove the current safety issue of vehicles traveling in the shoulder to pass a turning vehicle, it would in turn require Elm Street vehicles to cross 2 lanes of traffic to successfully complete a turning maneuver. This could increase the potential for collisions and would further decrease capacity for Elm Street approaches. This additional safety issue led several audit participants to suggest that left turn lanes should only be considered in conjunction with signalization.
- Signalization. The installation of a traffic signal was suggested by several audit participants, and is supported by both OCPC and the Town of Easton. Installation of a traffic signal is a mid-term, high cost improvement. A traffic signal would address concerns of speed, pavement width and conflicts with left turning vehicles by providing a protected movement for vehicles exiting Elm Street. The offset Elm Street approaches would require split phasing, which provides a separate green phase for each approach.

Driver Confusion

Driver confusion was discussed as a safety concern during the audit, primarily due to the offset Elm Street approaches. Potential improvements intended to alleviate driver confusion are as follows:

- **Realignment.** The Elm Street approaches could be re-aligned to provide a typical 4-way intersection. This can be done independent of other improvements, but would be most beneficial in conjunction with the installation of traffic signals. Realignment of the Elm Street approaches would require property acquisition and would require the removal of an existing building, most likely on the northwest corner of the intersection. This would relocate the west leg of Elm Street further north, away from the Washington Street Cemetery. This is a long-term, high cost improvement due to the property acquisition requirement.
- **Intersection warning signs.** The installation of W2-1 intersection warning signs on the Washington Street approaches would increase awareness of the intersection for approaching vehicles. This would alert drivers to the potential of encountering turning or crossing vehicles. This is a short-term, low cost improvement.
- **Signalization.** The installation of a traffic signal was suggested by several audit participants, and is supported by both OCPC and the Town of Easton. Installation of a traffic signal is a mid-term, high cost improvement. A traffic signal would reduce driver confusion by clearly alerting them to the existence of an intersection and would provide protected movements for vehicles exiting Elm Street. A traffic signal could be constructed independent of other improvements, but would be most beneficial in conjunction with realignment of the Elm Street approaches. Realignment would greatly increase the cost of traffic signal design and construction due to the property acquisition requirement.
- **Yellow/Red Flashing Beacon.** The installation of a flashing beacon would increase visibility of the intersection but would not provide protection for vehicles exiting Elm Street. Installation of a flashing beacon is a mid-term, medium cost improvement. It was noted by an audit participant that a flashing beacon could be installed as an interim measure in advance of a traffic signal.
- **Relocate stop sign on Elm Street westbound approach.** The stop sign on the Elm Street westbound approach is set approximately 40 feet behind the stop line, which adds to driver confusion because it does not clearly indicate where a vehicle should stop. The stop sign should be relocated to the stop line and be paired with a W3-1a “STOP AHEAD” graphic sign on the Elm Street westbound approach. This is a short-term, low cost improvement. The discussion of stop control on this approach led to a related discussion of additional improvements that could be made to improve stop line visibility.



- Paint “STOP” markings. The word “STOP” would be painted at the stop line on both Elm Street approaches. This would improve visibility of the stop line. This is a short-term, low cost improvement.
- Paint wider stop lines. A double-width stop line would be painted on both Elm Street approaches. This would improve visibility of the stop line. This is a short-term, low cost improvement.
- Apply pavement guide lines. A painted guide line would connect the two Elm Street centerlines to better define through movements at the intersection. This would be a short-term, low cost improvement. The offset geometry of the intersection may prohibit this from being a practical solution, as a through vehicle essentially makes two short back-to-back turning movements and cannot accomplish the through maneuver with a straight line movement.
- Install “Use Turn Signal” signs. This was suggested by an audit participant but was not recommended by the group, as it would not improve safety for through vehicles and may create additional confusion for through vehicles as to whether or not they need to use their turn signal.

Passing Zones

There is a passing zone in both directions on Washington Street which ends approximately 250 feet north of the intersection. There is a passing zone for southbound traffic that begins immediately south of the intersection. The no passing zone should be extended to approximately 100 feet south of the intersection to reduce the potential for vehicles to be in a passing maneuver at the intersection. This is a short-term, low cost improvement.

Pedestrian Safety

Pedestrian safety was not discussed as a specific topic during the discussion of recommendations at the audit, but was mentioned as a safety concern while discussing other safety recommendations. As such, those recommendations are presented here along with the specific pedestrian safety issues that those recommendations may alleviate.

- Sidewalks. This would be a mid-term and high cost improvement. Sidewalks would be constructed along the west side of Washington Street, providing connection to the existing sidewalk on the south side of the west leg of Elm Street. This would require a painted crosswalk across Elm Street and would further reduce sight distance on that approach by moving the stop line further back from the intersection. Therefore, installation of sidewalks should only be considered in conjunction with signalization.
- Signalization. The installation of a traffic signal was suggested by several audit participants, and is supported by both OCPC and the Town of Easton. Installation of a traffic signal is a mid-term, high cost improvement. A traffic signal would provide a protected pedestrian phase with pushbutton activation.

Summary of Road Safety Audit

Table 3 summarizes potential recommendations discussed by the audit team. The recommendations are categorized based on the potential safety payoff, as well as by time frame and cost. The safety payoff is a qualitative judgment of the effectiveness of the potential safety improvements.

Table 3. Potential Safety Enhancement Summary

Safety Issue	Safety Enhancement	Safety Payoff	Time Frame	Cost
Sight Distance, Speed, Left-turning Vehicles, Driver Confusion, Lack of Channelization/Access Management, Pedestrian Safety	Installation of a fully-actuated traffic signal in conjunction with sidewalks and pedestrian facility upgrades	High	Mid-term	\$800,000
Sight Distance, Speed, Left-turning Vehicles, Lack of Channelization/Access Management, Pedestrian Safety	Sidewalks	High	Mid-term	\$300,000
Speed, Left-turning Vehicles, Driver Confusion	Installation of a fully-actuated traffic signal	High	Mid-term	\$300,000
Speed, Left-turning Vehicles, Lack of Channelization/Access Management	Install Curbing/Berm	Medium	Short-term	Curb: \$25,000 Berm: \$10,000
Sight Distance	Reset Town Sign (Sign restricts sight triangle for Elm Street eastbound and Washington Street northbound vehicles.)	Medium	Short-term	\$300
Sight Distance	Remove Vegetation on Wall (Vegetation restricts sight triangle for Elm Street eastbound and Washington Street northbound vehicles.)	Medium	Short-term	\$100
Sight Distance	Remove Tree along Wall (Wall borders the Washington Street Cemetery south of the intersection.)	Low	Short-term	\$1,000
Sight Distance	Install No Parking Signs & Enforce no parking on shoulder on Washington Street	Low	Short-term	\$400
Speed	Speed limit enforcement	Medium	Short-term	Reduced enforcement elsewhere in Town
Speed	Install speed limit signs 1000' in advance of Elm Street on both Washington Street approaches.	Low	Short-term	\$400

Table 3. Potential Safety Enhancement Summary

Safety Issue	Safety Enhancement	Safety Payoff	Time Frame	Cost
Driver Confusion	Realignment of Elm Street approaches	High	Long-term	\$2,000,000
Driver Confusion	Install Flashing Beacon	Medium	Mid-term	\$50,000
Driver Confusion	Install Intersection Warning Signs on Washington Street approaches	Low	Short-term	\$400
Driver Confusion	Relocate Stop Sign on Elm Street westbound approach	Low	Short-term	\$200
Driver Confusion	Paint "STOP" markings on Elm Street approaches	Low	Short-term	\$300
Driver Confusion	Paint wider stop lines on Elm Street approaches	Low	Short-term	\$300
Passing Zones	Extend No Passing Zone	Low	Short-term	\$500

Appendix A. RSA Meeting Agenda

Agenda

Road Safety Audit

Easton – Washington Street 2 Intersections
Elm Street and Union Street

Meeting Location: Easton Town Hall, 136 Elm Street
Monday, July 13, 2009
9:00 AM – 12:00 noon

Type of meeting: High Crash Location – Road Safety Audit
Attendees: Invited Participants to Comprise a Multidisciplinary Team
Please bring: Thoughts and Enthusiasm!!

9:00 AM Welcome and Introductions

9:15 AM Review of Site Specific Material

- Crash, Speed & Volume Summaries
- Existing Geometries and Conditions

10:00 AM Visit the Site

- Drive to the intersection of Washington and Elm Street
- As a group, identify areas for improvement
- Drive to the intersection of Washington and Union Street
- As a group, identify areas for improvement

11:15 AM Completion of RSA

- Finalize all areas for improvement
- Discuss potential improvements with pros and cons and record possible countermeasures

12:00 noon Adjourn for the Day – but the RSA has not ended

Instructions for Participants:

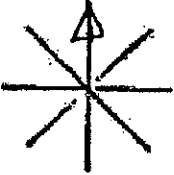
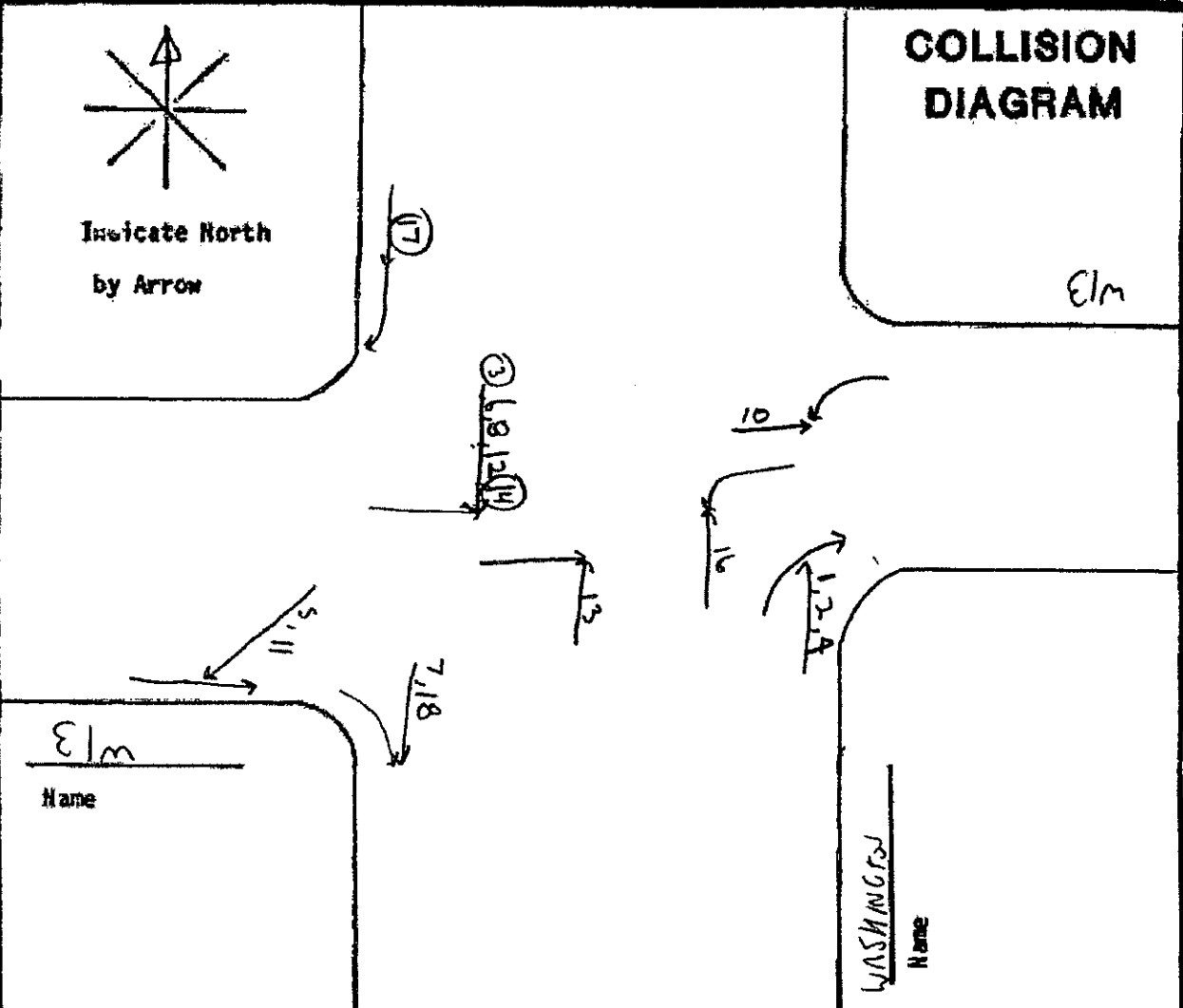
- Before attending the RSA on July 13th, participants are encouraged to drive through the Washington Street/Elm Street and Washington Street/Union Street intersections and complete/consider elements on the RSA Prompt List with a focus on safety.
- All participants will be actively involved in the process throughout. Participants are encouraged to come with thoughts and ideas, but are reminded that the synergy that develops and respect for others' opinions are key elements to the success of the overall RSA process.
- After the RSA meeting, participants will be asked to comment and respond to the document materials to assure it is reflective of the RSA completed by the multidisciplinary team.

Appendix B. RSA Audit Team Contact List

**HIGH CRASH LOCATION ROAD SAFETY AUDIT - ELM ST UNION ST
MONDAY JULY 13, 2009, 9 AM AT EASTON TOWN HALL SIGN UP SHEET**

NAME	ORGANIZATION	EMAIL
Carrie Lavallee	MHD-Proj. Management	Carrie.Lavallee@mhd.state.ma.us
WAYNE P. SOUTHWORTH	D.P.W Dir	WSOUTHWORTH@EASTON.MA.US
DAVID A. COLTON	TOWN OF EASTON	dcolton@easton.ma.us
Rep Christine E Caravan	Legislature	
Rep David Flynn	Legislature	
Benjamin Janelli	(Rep. Creedon's office)	Benjamin.Janelli@state.ma.us
Colleen Corona	Chair, B.O.S. Easton	colleencorona@comcast.net
ALLEN KRAJCIK	Police Chief	akrajci@EASTON.MA.US
THOMAS STONE	EASTON FIRE CHIEF	tstone@easton.ma.us
Charles Kitmer	Old Colony Planning Council	ckitmer@ocpcrpa.org
Ken Petraglia	BETA Group, Inc.	kpetraglia@BETA-inc.com
Tim White	FHWA	TIMOTHY.A.White@dot.gov
Jill	BETA	Jill Jill@beta-inc.com
Greg Lucas	BETA	GREG LUCAS @ BETA-INC.COM
Bill Travers	MHD-D5 Projects	Bill.Travers@mhd.state.ma.us
Dolores Kent	Easton Council on Aging	dkent@easton-ma.us
Ray Guarino	OCPC	r Guarino@ocpcrpa.org
Joe PACIFICO	Rep. Flynn's OFFICE	
Edward G Feehan	MHD D-5	
MAURICE GOULET	EASTON DPW	mgoulet@easton.ma.us
Jeanne Telega Weinstock	EOT	jeanne.weinstock@eot.state.ma.us

Appendix C. Detailed Crash Data

 <p>Indicate North by Arrow</p>	<p>COLLISION DIAGRAM</p> <p style="text-align: right; font-size: 2em;">Elm</p>	
<p>Elm Name</p>	<p>WASHINGTON Name</p>	
<p>SYMBOLS</p> <ul style="list-style-type: none"> → Moving Vehicle ⇐ Backing Vehicle - - - Non-Involved Vehicle ⋈ Pedestrian ▣ Parked Vehicle □ Fixed Object ● Fatal Accident ○ Injury Accident 	<p>TYPES OF COLLISIONS</p> <ul style="list-style-type: none"> →+→ Rear-End →+ Head On →↔ Side Swipe →↘ Out of Control →↙ Left Turn →⊥ Right Angle 	<p>SHOW FOR EACH ACCIDENT</p> <ol style="list-style-type: none"> 1. Approximate location of accident 2. Type of collision and vehicles involved. 3. Time, Day, Date 4. Any other pertinent factors mentioned on the report (i.e. presence of oil on road, ruts, etc.)
<p>INTERSECTION <u>WASHINGTON ST</u> and <u>Elm ST</u></p> <p>PERIOD FROM: <u>1/1/2006</u> to <u>12/31/2008</u></p>		

EASTON
A-6
CRASH DATA SUPPLIED BY EASTON PD

Time Period: 1/1/2006-12/31/2008, 3 years

City: Easton

Location: Washington / Elm Street

Crash #	Date	Time	Light conditions	Weather Conditions	Road surface	Driver Ages	Driver Contributing codes	Max. Injuries	Vehicle types (if not pc, light truck)	Notes
1	2/20/2006	9:42	Daylight	clear	dry	43, 35	failed to yield ROW	PDO		vehicle attempted to pass on right in shoulder
2	3/28/2006	15:00	Daylight	clear	dry	46, 56	failed to yield ROW	PDO		vehicle attempted to pass on right in shoulder
3	6/2/2006	22:07	dark-lighte	rain	wet	26, 67	failed to yield ROW	possible injury	Bus-15+ pax	went through stop sign
4	7/10/2006	8:04	Daylight	clear	dry	46, 50	no brake lights no signal	PDO		vehicle attempted to pass on right in shoulder speeding vehicle on Washington lost control and hit vehicle
5	2/14/2007	6:19	dawn	rain, snow	snow	52, 35	speeding, lost control	PDO		stopped at stop sign
6	6/26/2007	17:21	Daylight	clear	dry	18, 19	failed to yield ROW	PDO		stopped at stop sign and then proceeded into traffic
7	9/21/2007	15:32	Daylight	clear	dry	52, 53	failed to yield ROW	PDO		turned right from elm onto Washington when car was coming
8	10/31/2007	17:42	Dusk	clear	dry	25, 59	visibility obstructed	PDO		vehicle on Washington was passing around a right turning vehicle and struck a vehicle turning right from Elm
9	1/24/2008	18:28	dark-lighte	clear	dry	43, 47		PDO		
10	1/23/2008	15:33	Daylight	clear	dry	19, 29	inattention	PDO		
11	1/27/2008	11:19	Daylight	cloudy, snow	snow	33, 36, 69	too fast for conditions	PDO		
12	2/2/2008	17:33	dark-lighte	clear	dry	37, 50	failed to yield ROW	PDO		
13	3/8/2008	11:40	Daylight	rain	wet	18, 38	inattention	PDO		
14	7/9/2008	11:53	Daylight	clear	dry	43, 55	failed to yield ROW	possible injury		
15	11/13/2008	12:32	Daylight	clear	dry	48	illness	PDO		ran off road due to diabetic attack - AT 200 WASHINGTON STREET not at intersection
16	11/14/2008	16:21	Daylight	rain	wet	47, 20, 17	failed to yield ROW	PDO		
17	12/7/2008	0:45	dark-lighte	clear	dry	20, 18	followed too closely	injury		
18	12/15/2008	17:54	dark-lighte	cloudy, snow	dry	18, 62	failed to yield ROW	PDO		

Source: provided by Easton Police Department 7-16-09

PDO 15
 Injury 3
 EPDO 30

Time Period: 1/1/2006-12/31/2008, 3 years

City: Easton

Location: Washington between Union and Elm Streets

Crash #	Date	Time	Light conditions	Weather Conditions	Road surface	Driver Ages	Driver Contributing codes	Max. injuries	Vehicle types (if not pc, light truck)	Notes
1	7/12/2008	4:49	dawn	clear	dry	32	operating erratic, reckless, car	PDO	non-motorist	fatal crash striking pedestrian coming out of driveway at #77 Washington St
2	7/9/2008	13:18	daylight	clear	dry	47, 65	???	PDO		at #105 Washington
3	8/29/2008	12:32	daylight	clear	dry	85, 23	???	PDO		in parking lot of Tectschis and Fresh Catch, not on Washington Street
4	3/5/2008	12:30	daylight	clear	dry	79	???	PDO		ran off road at #78 Washington st
5	1/4/2008	10:07	daylight	snow	ice	44	???	PDO		attempting U-turn
6	11/24/2007	12:10	daylight	clear	dry	80, 41	???	possible injury	non-motorist	struck bicyclist while exiting #181 Washington St
7	10/11/2007	17:23	daylight	cloudy, rain	wet	65	???	PDO		at Dolly's Way intersection
8	3/18/2007	18:20	dark-lighted	snow	snow	24	driving too fast for conditions	PDO		
9	3/8/2007	15:26	daylight	clear	dry	75, 38	failed to yield ROW	PDO		
10	2/22/2007	17:39	dark-lighted	cloudy, rain	wet	18, 40	???	PDO		
11	2/22/2007	13:57	daylight	cloudy, rain	dry	67, 70	???	PDO		
12	10/20/2006	16:41	daylight	cloudy, rain	wet	74	failed to yield ROW	possible		crossed median
13	10/19/2006	23:57	dark-lighted	clear	dry	40, 23	followed too closely	PDO		
14	1/4/2006	17:10	dark-lighted	cloudy, rain	dry	51, 46	failed to yield ROW	PDO		
15	11/30/2007	14:48	daylight	clear	dry	28, 16	failed to yield ROW	non-incapacitating injury		

Source: provided by Easton Police Department 7-16-09

Appendix D. Traffic Volume Data

Old Colony Planning Council
 70 School Street
 Brockton, MA 02301
 508-583-1833

Community: Easton
 Community#_FC: 88_U5
 Recorder #: Jamar #11
 Tube Layout: L6 Basic

Station ID:
 Site Code: 88
 Date Start: 09-Aug-06
 Date End: 10-Aug-06
 Washington St, north of Main St

Start Time	07-Aug-06		Tue		Wed		Thu		Fri		Sat		Sun		Week Average	
	SB	NB	SB	NB	SB	NB	SB	NB	SB	NB	SB	NB	SB	NB	SB	NB
12:00 AM	*	*	*	*	54	57	55	63	*	*	*	*	*	*	54	60
01:00	*	*	*	*	29	21	39	27	*	*	*	*	*	*	34	24
02:00	*	*	*	*	15	14	14	11	*	*	*	*	*	*	14	12
03:00	*	*	*	*	10	19	15	17	*	*	*	*	*	*	12	18
04:00	*	*	*	*	24	34	25	36	*	*	*	*	*	*	24	35
05:00	*	*	*	*	59	117	44	114	*	*	*	*	*	*	52	116
06:00	*	*	*	*	168	508	176	481	*	*	*	*	*	*	172	494
07:00	*	*	*	*	288	743	309	726	*	*	*	*	*	*	298	734
08:00	*	*	*	*	400	774	428	783	*	*	*	*	*	*	414	778
09:00	*	*	*	*	432	550	462	538	*	*	*	*	*	*	447	544
10:00	*	*	*	*	425	473	433	498	*	*	*	*	*	*	429	486
11:00	*	*	*	*	438	469	471	486	*	*	*	*	*	*	454	478
12:00 PM	*	*	*	*	492	555	562	513	*	*	*	*	*	*	527	534
01:00	*	*	*	*	495	530	494	525	*	*	*	*	*	*	494	528
02:00	*	*	*	*	519	528	534	528	*	*	*	*	*	*	526	528
03:00	*	*	*	*	655	572	680	561	*	*	*	*	*	*	668	566
04:00	*	*	*	*	753	534	751	584	*	*	*	*	*	*	752	559
05:00	*	*	*	*	853	578	780	635	*	*	*	*	*	*	816	606
06:00	*	*	*	*	725	538	749	507	*	*	*	*	*	*	737	522
07:00	*	*	*	*	475	368	482	380	*	*	*	*	*	*	478	374
08:00	*	*	*	*	349	322	357	337	*	*	*	*	*	*	353	330
09:00	*	*	*	*	271	250	256	206	*	*	*	*	*	*	264	228
10:00	*	*	*	*	164	147	168	157	*	*	*	*	*	*	166	152
11:00	*	*	*	*	88	80	100	111	*	*	*	*	*	*	94	96
Lane Day	0	0	0	0	8181	8781	8384	8824	0	0	0	0	0	0	8279	8802
AM Peak Vol.	0	0	0	0	16962	17208	17208	17208	0	0	0	0	0	0	17081	17081
PM Peak Vol.					11:00	08:00	11:00	08:00							11:00	08:00
AM Peak Vol.					438	774	471	783							454	778
PM Peak Vol.					17:00	17:00	17:00	17:00							17:00	17:00
PM Peak Vol.					853	578	780	635							816	606

Comb. Total 0 0 16962 17208 0 0 0 17081

ADT Not Calculated

Old Colony Planning Council
 70 School Street
 Brockton, MA 02301
 508-583-1833

Community: Easton
 Community#_FC: 88_U5
 Recorder #: Jamar #11
 Tube Layout: L6 Basic

Station ID:
 Site Code: 88
 Date Start: 09-Aug-06
 Date End: 10-Aug-06
 Washington St, north of Main St

Start Time	07-Aug-06 Mon	08-Aug-06 Tue	09-Aug-06 Wed	10-Aug-06 Thu	11-Aug-06 Fri	12-Aug-06 Sat	13-Aug-06 Sun	Week Average
12:00 AM	*	*	111	118	*	*	*	114
01:00	*	*	50	66	*	*	*	58
02:00	*	*	29	25	*	*	*	27
03:00	*	*	29	32	*	*	*	30
04:00	*	*	58	61	*	*	*	60
05:00	*	*	176	158	*	*	*	167
06:00	*	*	676	657	*	*	*	666
07:00	*	*	1031	1035	*	*	*	1033
08:00	*	*	1174	1211	*	*	*	1192
09:00	*	*	982	1000	*	*	*	991
10:00	*	*	898	931	*	*	*	914
11:00	*	*	907	957	*	*	*	932
12:00 PM	*	*	1047	1075	*	*	*	1061
01:00	*	*	1025	1019	*	*	*	1022
02:00	*	*	1047	1062	*	*	*	1054
03:00	*	*	1227	1241	*	*	*	1234
04:00	*	*	1287	1335	*	*	*	1311
05:00	*	*	1431	1415	*	*	*	1423
06:00	*	*	1263	1256	*	*	*	1260
07:00	*	*	843	862	*	*	*	852
08:00	*	*	671	694	*	*	*	682
09:00	*	*	521	462	*	*	*	492
10:00	*	*	311	325	*	*	*	318
11:00	*	*	168	211	*	*	*	190
Total	0	0	16962	17208	0	0	0	17083
Percentage	0.0%	0.0%	99.3%	100.7%	0.0%	0.0%	0.0%	
AM Peak			08:00	08:00				08:00
Vol.			1174	1211				1192
PM Peak			17:00	17:00				17:00
Vol.			1431	1415				1423

Old Colony Planning Council
 70 School Street
 Brockton, MA 02301
 508-583-1833

Community: Easton
 Community#_FC: 88_U5
 Recorder #: Jamar #11
 Tube Layout: L6 Basic
 SB

Station ID:
 Site Code: 88
 Date Start: 09-Aug-06
 Date End: 10-Aug-06

Washington St, north of Main St

Start Time	15	20	25	30	35	40	45	50	55	60	65	70	75	999	Total
08/09/06	0	0	0	0	0	3	18	20	11	2	0	0	0	0	54
01:00	1	0	0	0	0	3	6	10	5	4	0	0	0	0	29
02:00	0	0	0	0	0	0	6	3	5	1	0	0	0	0	15
03:00	0	0	0	0	0	1	4	4	1	0	0	0	0	0	10
04:00	0	0	0	0	0	0	6	14	3	0	1	0	0	0	24
05:00	1	0	0	0	0	3	13	24	15	3	0	0	0	0	59
06:00	9	0	0	0	0	17	61	61	13	6	0	1	0	0	168
07:00	16	0	0	0	3	25	108	104	30	2	0	0	0	0	288
08:00	34	0	1	0	4	56	161	109	26	8	1	0	0	0	400
09:00	29	0	2	0	5	58	180	116	37	5	0	0	0	0	432
10:00	20	0	0	1	15	59	179	121	28	2	0	0	0	0	425
11:00	23	1	1	0	9	55	186	135	26	1	0	1	0	0	438
12 PM	25	0	3	2	24	75	225	108	28	1	1	0	0	0	492
13:00	22	1	6	3	21	69	218	118	34	2	1	0	0	0	495
14:00	22	0	2	8	12	93	223	112	43	3	1	0	0	0	519
15:00	27	0	1	0	24	105	306	161	30	1	0	0	0	0	655
16:00	38	0	1	14	28	95	328	206	41	1	1	0	0	0	753
17:00	57	2	10	8	14	113	397	209	39	4	0	0	0	0	853
18:00	29	0	0	0	7	121	334	192	36	6	0	0	0	0	725
19:00	17	0	0	2	10	65	239	113	25	2	2	0	0	0	475
20:00	19	0	0	3	5	57	168	82	12	2	1	0	0	0	349
21:00	7	0	0	1	8	47	126	64	15	2	1	0	0	0	271
22:00	0	0	0	0	1	23	73	48	17	1	0	0	1	0	164
23:00	0	0	0	0	1	15	32	26	12	1	1	0	0	0	88
Total	396	4	27	42	191	1158	3597	2160	532	60	11	2	1	0	8181

Old Colony Planning Council
 70 School Street
 Brockton, MA 02301
 508-583-1833

Community: Easton
 Community#_FC: 88_U5
 Recorder #: Jamar #11
 Tube Layout: L6 Basic
 SB

Station ID:
 Site Code: 88
 Date Start: 09-Aug-06
 Date End: 10-Aug-06

Washington St, north of Main St

Start Time	15	16	20	21	25	26	30	31	35	36	40	41	45	46	50	51	55	56	60	61	65	66	70	71	75	76	999	Total
08/10/06	1	0	0	0	0	0	0	0	0	2	20	22	6	2	2	1	1	0	0	0	0	0	0	0	0	0	0	55
01:00	1	0	0	0	0	0	0	0	0	2	10	16	7	3	0	0	0	0	0	0	0	0	0	0	0	0	0	39
02:00	0	0	0	0	0	0	0	0	0	3	4	3	2	1	0	1	0	0	0	0	0	0	0	0	0	0	0	14
03:00	2	0	0	0	0	0	0	0	0	3	3	1	5	1	0	0	0	0	0	0	0	0	0	0	0	0	0	15
04:00	0	1	0	0	0	0	0	0	0	3	6	7	5	3	0	0	0	0	0	0	0	0	0	0	0	0	0	25
05:00	0	0	0	0	0	0	0	0	0	0	12	20	10	2	0	0	0	0	0	0	0	0	0	0	0	0	0	44
06:00	5	0	0	0	0	0	0	2	18	18	63	63	19	4	2	0	0	0	0	0	0	0	0	0	0	0	0	176
07:00	17	0	0	0	0	0	2	24	133	103	28	1	1	0	0	0	0	0	0	0	0	0	0	0	0	0	0	309
08:00	32	0	0	4	5	59	191	106	28	2	1	0	0	0	0	0	0	0	0	0	0	0	0	0	0	0	0	428
09:00	24	2	0	0	6	72	212	112	33	1	0	0	0	0	0	0	0	0	0	0	0	0	0	0	0	0	0	462
10:00	20	0	1	3	10	67	212	97	21	2	0	0	0	0	0	0	0	0	0	0	0	0	0	0	0	0	0	433
11:00	29	0	1	2	12	72	225	99	27	3	1	0	0	0	0	0	0	0	0	0	0	0	0	0	0	0	0	471
12 PM	38	1	2	4	16	87	246	131	35	2	0	0	0	0	0	0	0	0	0	0	0	0	0	0	0	0	0	562
13:00	29	2	1	1	24	64	199	131	38	4	0	1	0	0	0	0	0	0	0	0	0	0	0	0	0	0	0	494
14:00	21	0	1	0	9	74	263	135	29	2	0	0	0	0	0	0	0	0	0	0	0	0	0	0	0	0	0	534
15:00	31	0	0	7	22	119	298	175	27	1	0	0	0	0	0	0	0	0	0	0	0	0	0	0	0	0	0	680
16:00	42	0	1	3	28	153	350	145	25	4	0	0	0	0	0	0	0	0	0	0	0	0	0	0	0	0	0	751
17:00	37	0	1	5	43	179	370	125	20	0	0	0	0	0	0	0	0	0	0	0	0	0	0	0	0	0	0	780
18:00	40	0	2	10	23	170	371	113	19	1	0	0	0	0	0	0	0	0	0	0	0	0	0	0	0	0	0	749
19:00	23	3	0	4	21	85	213	113	17	2	0	1	0	0	0	0	0	0	0	0	0	0	0	0	0	0	0	482
20:00	14	0	0	1	17	101	168	43	12	0	0	0	0	0	0	0	0	0	0	0	0	0	1	0	0	0	0	357
21:00	7	0	0	0	8	69	110	53	7	2	0	0	0	0	0	0	0	0	0	0	0	0	0	0	0	0	0	256
22:00	2	0	0	1	5	22	68	40	22	8	0	0	0	0	0	0	0	0	0	0	0	0	0	0	0	0	0	168
23:00	2	1	0	0	0	13	38	32	13	1	0	0	0	0	0	0	0	0	0	0	0	0	0	0	0	0	0	100
Total	417	10	10	45	253	1461	3785	1885	455	52	6	4	1	0	0	0	0	0	0	0	0	0	0	0	0	0	0	8384
Grand Total	813	14	37	87	444	2619	7382	4045	987	112	17	6	2	0	0	0	0	0	0	0	0	0	0	0	0	0	0	16565

15th Percentile : 38 MPH
 50th Percentile : 43 MPH
 85th Percentile : 49 MPH
 95th Percentile : 52 MPH

Stats
 Mean Speed(Average) : 42 MPH
 10 MPH Pace Speed : 41-50 MPH
 Number in Pace : 11427
 Percent in Pace : 69.0%
 Number of Vehicles > 40 MPH : 12551
 Percent of Vehicles > 40 MPH : 75.8%

Old Colony Planning Council
 70 School Street
 Brockton, MA 02301
 508-583-1833

Community: Easton
 Community#_FC: 88_U5
 Recorder #: Jamar #11
 Tube Layout: L6 Basic
 NB

Station ID:
 Site Code: 88
 Date Start: 09-Aug-06
 Date End: 10-Aug-06

Washington St, north of Main St

Start Time	15	20	25	30	35	40	45	50	55	60	65	70	75	999	Total
08/09/06	0	0	0	0	0	8	21	18	6	3	1	0	0	0	57
01:00	1	0	0	0	0	5	2	10	2	0	0	0	1	0	21
02:00	0	0	0	0	0	2	3	5	3	1	0	0	0	0	14
03:00	0	0	0	0	0	1	7	2	7	1	1	0	0	0	19
04:00	0	0	0	0	1	1	10	10	9	2	1	0	0	0	34
05:00	1	0	0	1	4	7	35	39	21	6	2	1	0	0	117
06:00	12	0	0	1	5	63	187	162	63	13	2	0	0	0	508
07:00	34	4	12	18	28	120	290	150	76	10	1	0	0	0	743
08:00	43	0	1	6	35	165	310	147	54	11	2	0	0	0	774
09:00	36	1	2	13	60	102	190	108	30	6	1	0	1	0	550
10:00	28	1	1	7	28	84	191	95	33	3	0	0	1	1	473
11:00	38	1	0	8	24	86	199	77	31	3	2	0	0	0	469
12 PM	46	1	1	10	37	116	189	103	43	9	0	0	0	0	555
13:00	53	0	9	6	33	84	201	109	31	4	0	0	0	0	530
14:00	50	1	1	1	21	115	189	111	32	6	1	0	0	0	528
15:00	52	1	2	3	22	93	224	123	40	8	3	1	0	0	572
16:00	49	0	1	19	30	76	171	115	61	11	1	0	0	0	534
17:00	84	1	2	6	20	85	195	137	39	6	3	0	0	0	578
18:00	64	0	0	3	20	54	185	147	58	5	2	0	0	0	538
19:00	26	0	2	1	9	53	124	102	40	9	2	0	0	0	368
20:00	25	0	0	2	13	85	121	54	17	3	2	0	0	0	322
21:00	20	0	0	0	6	47	117	38	18	3	1	0	0	0	250
22:00	2	0	0	0	3	27	66	33	14	2	0	0	0	0	147
23:00	0	0	0	0	1	14	27	23	12	2	1	0	0	0	80
Total	664	11	34	105	400	1493	3254	1918	740	127	29	2	3	1	8781

Old Colony Planning Council
 70 School Street
 Brockton, MA 02301
 508-583-1833

Community: Easton
 Community#_FC: 88_U5
 Recorder #: Jamar #11
 Tube Layout: L6 Basic
 NB

Station ID:
 Site Code: 88
 Date Start: 09-Aug-06
 Date End: 10-Aug-06

Washington St, north of Main St

Start Time	15	20	25	30	35	40	45	50	55	60	65	70	75	999	Total
08/10/06	0	0	0	0	1	2	23	27	8	2	0	0	0	0	63
01:00	0	0	0	0	2	6	7	6	5	1	0	0	0	0	27
02:00	0	0	0	0	0	2	3	3	2	1	0	0	0	0	11
03:00	1	0	0	0	0	2	4	7	1	0	1	0	0	1	17
04:00	0	0	0	2	2	5	7	13	5	1	1	0	0	0	36
05:00	0	0	1	1	7	9	26	30	30	7	2	1	0	0	114
06:00	5	0	0	0	4	38	170	161	86	12	5	0	0	0	481
07:00	23	1	2	3	13	83	295	201	87	15	2	0	1	0	726
08:00	49	0	3	1	44	154	275	188	56	11	2	0	0	0	783
09:00	36	0	1	0	15	116	211	120	35	4	0	0	0	0	538
10:00	21	0	0	7	33	93	193	112	35	3	1	0	0	0	498
11:00	36	1	1	8	27	102	171	97	39	3	1	0	0	0	486
12 PM	45	1	6	7	16	125	183	98	27	5	0	0	0	0	513
13:00	46	2	3	7	14	82	181	126	57	6	1	0	0	0	525
14:00	43	0	1	3	14	107	197	120	34	9	0	0	0	0	528
15:00	62	4	1	1	14	116	208	115	38	1	1	0	0	0	561
16:00	82	0	0	4	28	96	205	128	37	4	0	0	0	0	584
17:00	84	5	2	2	52	110	236	101	37	3	1	2	0	0	635
18:00	55	1	7	19	31	117	171	81	22	3	0	0	0	0	507
19:00	27	1	5	5	16	75	140	73	33	5	0	0	0	0	380
20:00	20	1	2	5	32	88	114	50	22	3	0	0	0	0	337
21:00	5	0	0	2	15	53	80	39	10	1	1	0	0	0	206
22:00	1	0	0	0	4	33	66	32	16	4	1	0	0	0	157
23:00	2	0	0	0	3	21	46	20	13	5	1	0	0	0	111
Total	643	17	35	77	387	1635	3212	1948	735	109	21	3	1	1	8824
Grand Total	1307	28	69	182	787	3128	6466	3866	1475	236	50	5	4	2	17605

15th Percentile : 36 MPH
 50th Percentile : 43 MPH
 85th Percentile : 49 MPH
 95th Percentile : 54 MPH

Stats
 Mean Speed(Average) : 41 MPH
 10 MPH Pace Speed : 41-50 MPH
 Number in Pace : 10332
 Percent in Pace : 58.7%
 Number of Vehicles > 40 MPH : 12104
 Percent of Vehicles > 40 MPH : 68.8%

Old Colony Planning Council
 70 School Street
 Brockton, MA 02301
 508-583-1833

Community: Easton
 Community#_FC: 88_U5
 Recorder #: Jamar #11
 Tube Layout: L6 Basic
 SB, NB

Station ID:
 Site Code: 88
 Date Start: 09-Aug-06
 Date End: 10-Aug-06

Washington St, north of Main St

Start Time	15	20	25	30	35	40	45	50	55	60	65	70	75	999	Total
08/09/06	0	0	0	0	0	11	39	38	17	5	1	0	0	0	111
01:00	2	0	0	0	0	8	8	20	7	4	0	0	1	0	50
02:00	0	0	0	0	0	2	9	8	8	2	0	0	0	0	29
03:00	0	0	0	0	0	2	11	6	8	1	1	0	0	0	29
04:00	0	0	0	0	1	1	16	24	12	2	2	0	0	0	58
05:00	2	0	0	1	4	10	48	63	36	9	2	1	0	0	176
06:00	21	0	0	1	5	80	248	223	76	19	2	1	0	0	676
07:00	50	4	12	18	31	145	398	254	106	12	1	0	0	0	1031
08:00	77	0	2	6	39	221	471	256	80	19	3	0	0	0	1174
09:00	65	1	4	13	65	160	370	224	67	11	1	0	1	0	982
10:00	48	1	1	8	43	143	370	216	61	5	0	0	1	1	898
11:00	61	2	1	8	33	141	385	212	57	4	2	1	0	0	907
12 PM	71	1	4	12	61	191	414	211	71	10	1	0	0	0	1047
13:00	75	1	15	9	54	153	419	227	65	6	1	0	0	0	1025
14:00	72	1	3	9	33	208	412	223	75	9	2	0	0	0	1047
15:00	79	1	3	3	46	198	530	284	70	9	3	1	0	0	1227
16:00	87	0	2	33	58	171	499	321	102	12	2	0	0	0	1287
17:00	141	3	12	14	34	198	592	346	78	10	3	0	0	0	1431
18:00	93	0	0	3	27	175	519	339	94	11	2	0	0	0	1263
19:00	43	0	2	3	19	118	363	215	65	11	4	0	0	0	843
20:00	44	0	0	5	18	142	289	136	29	5	3	0	0	0	671
21:00	27	0	0	1	14	94	243	102	33	5	2	0	0	0	521
22:00	2	0	0	0	4	50	139	81	31	3	0	0	1	0	311
23:00	0	0	0	0	2	29	59	49	24	3	2	0	0	0	168
Total	1060	15	61	147	591	2651	6851	4078	1272	187	40	4	4	1	16962

Old Colony Planning Council
 70 School Street
 Brockton, MA 02301
 508-583-1833

Community: Easton
 Community#_FC: 88_U5
 Recorder #: Jamar #11
 Tube Layout: L6 Basic
 SB, NB

Station ID:
 Site Code: 88
 Date Start: 09-Aug-06
 Date End: 10-Aug-06

Washington St, north of Main St

Start Time	15	20	25	30	35	40	45	50	55	60	65	70	75	999	Total
08/10/06	1	0	0	0	1	4	43	49	14	4	1	1	0	0	118
01:00	1	0	0	0	2	8	17	22	12	4	0	0	0	0	66
02:00	0	0	0	0	0	5	7	6	4	2	0	1	0	0	25
03:00	3	0	0	0	0	5	7	8	6	1	1	0	0	1	32
04:00	0	1	0	2	2	8	13	20	10	4	1	0	0	0	61
05:00	0	0	1	1	7	9	38	50	40	9	2	1	0	0	158
06:00	10	0	0	0	6	56	233	224	105	16	7	0	0	0	657
07:00	40	1	2	3	15	107	428	304	115	16	3	0	1	0	1035
08:00	81	0	3	5	49	213	466	294	84	13	3	0	0	0	1211
09:00	60	2	1	0	21	188	423	232	68	5	0	0	0	0	1000
10:00	41	0	1	10	43	160	405	209	56	5	1	0	0	0	931
11:00	65	1	2	10	39	174	396	196	66	6	2	0	0	0	957
12 PM	83	2	8	11	32	212	429	229	62	7	0	0	0	0	1075
13:00	75	4	4	8	38	146	380	257	95	10	1	1	0	0	1019
14:00	64	0	2	3	23	181	460	255	63	11	0	0	0	0	1062
15:00	93	4	1	8	36	235	506	290	65	2	1	0	0	0	1241
16:00	124	0	1	7	56	249	555	273	62	8	0	0	0	0	1335
17:00	121	5	3	7	95	289	606	226	57	3	1	2	0	0	1415
18:00	95	1	9	29	54	287	542	194	41	4	0	0	0	0	1256
19:00	50	4	5	9	37	160	353	186	50	7	0	1	0	0	862
20:00	34	1	2	6	49	189	282	93	34	3	0	0	1	0	694
21:00	12	0	0	2	23	122	190	92	17	3	1	0	0	0	462
22:00	3	0	0	1	9	55	134	72	38	12	1	0	0	0	325
23:00	4	1	0	0	3	34	84	52	26	6	1	0	0	0	211
Total	1060	27	45	122	640	3096	6997	3833	1190	161	27	7	2	1	17208
Grand Total	2120	42	106	269	1231	5747	13848	7911	2462	348	67	11	6	2	34170

15th Percentile : 37 MPH
 50th Percentile : 43 MPH
 85th Percentile : 49 MPH
 95th Percentile : 53 MPH

Stats
 Mean Speed(Average) : 42 MPH
 10 MPH Pace Speed : 41-50 MPH
 Number in Pace : 21759
 Percent in Pace : 63.7%
 Number of Vehicles > 40 MPH : 24655
 Percent of Vehicles > 40 MPH : 72.2%

Old Colony Planning Council
 70 School Street
 Brockton, MA 02301
 508-583-1833

Community: Easton
 Community#_FC: 88_U5
 Recorder #: Jamar #11
 Tube Layout: L6 Basic
 SB

Station ID:
 Site Code: 88
 Date Start: 09-Aug-06
 Date End: 10-Aug-06

Washington St, north of Main St

Start Time	Bikes	Cars & Trailers	2 Axle Long	Buses	2 Axle 6 Tire	3 Axle Single	4 Axle Single	<5 Axl Double	5 Axle Double	>6 Axl Double	<6 Axl Multi	6 Axle Multi	>6 Axl Multi	Total
08/09/06	0	44	10	0	0	0	0	0	0	0	0	0	0	54
01:00	0	23	2	0	4	0	0	0	0	0	0	0	0	29
02:00	1	10	2	1	1	0	0	0	0	0	0	0	0	15
03:00	0	8	2	0	0	0	0	0	0	0	0	0	0	10
04:00	0	14	6	0	4	0	0	0	0	0	0	0	0	24
05:00	0	35	17	1	4	0	0	1	1	0	0	0	0	59
06:00	2	114	36	0	9	3	0	0	4	0	0	0	0	168
07:00	2	197	59	6	16	2	1	4	1	0	0	0	0	288
08:00	8	278	82	7	19	1	1	1	1	0	0	0	0	398
09:00	2	293	112	2	13	5	0	1	3	0	0	0	0	431
10:00	1	294	100	4	16	6	1	1	1	0	0	0	0	424
11:00	3	285	107	1	29	6	0	4	2	0	0	0	0	437
12 PM	4	342	107	3	24	7	1	3	0	0	0	0	0	491
13:00	5	342	110	0	29	1	1	3	2	1	0	0	0	494
14:00	2	362	112	3	23	8	0	4	4	0	0	0	0	518
15:00	3	444	166	2	27	6	0	5	1	0	0	0	0	654
16:00	12	515	166	4	48	1	0	3	2	1	0	0	0	752
17:00	18	641	158	2	30	2	0	1	2	0	0	0	0	854
18:00	13	549	132	1	22	2	0	3	2	0	0	0	0	724
19:00	7	380	76	1	10	0	0	1	0	0	0	0	0	475
20:00	6	265	70	0	6	0	0	1	0	0	0	0	0	348
21:00	3	226	40	0	1	1	0	0	0	0	0	0	0	271
22:00	3	130	31	0	0	0	0	0	0	0	0	0	0	164
23:00	4	68	13	0	3	0	0	0	0	0	0	0	0	88
Total	99	5859	1716	38	338	51	5	36	26	2	0	0	0	8170
Percent	1.2%	71.7%	21.0%	0.5%	4.1%	0.6%	0.1%	0.4%	0.3%	0.0%	0.0%	0.0%	0.0%	
AM Peak	08:00	10:00	09:00	08:00	11:00	10:00	07:00	07:00	06:00					11:00
Vol.	8	294	112	7	29	6	1	4	4					437
PM Peak	17:00	17:00	15:00	16:00	16:00	14:00	12:00	15:00	14:00	13:00				17:00
Vol.	18	641	166	4	48	8	1	5	4	1				854

Old Colony Planning Council
 70 School Street
 Brockton, MA 02301
 508-583-1833

Community: Easton
 Community#_FC: 88_U5
 Recorder #: Jamar #11
 Tube Layout: L6 Basic
 SB

Station ID:
 Site Code: 88
 Date Start: 09-Aug-06
 Date End: 10-Aug-06

Washington St, north of Main St

Start Time	Bikes	Cars & Trailers	2 Axle Long	Buses	2 Axle 6 Tire	3 Axle Single	4 Axle Single	<5 Axl Double	5 Axle Double	>6 Axl Double	<6 Axl Multi	6 Axle Multi	>6 Axl Multi	Total
08/10/06	0	47	8	0	0	0	0	0	0	0	0	0	0	55
01:00	0	33	4	0	0	0	0	0	2	0	0	0	0	39
02:00	0	10	2	0	2	0	0	0	0	0	0	0	0	14
03:00	1	10	3	0	1	0	0	0	0	0	0	0	0	15
04:00	0	18	4	0	2	1	0	0	0	0	0	0	0	25
05:00	0	27	11	2	4	0	0	0	0	0	0	0	0	44
06:00	1	114	48	0	7	3	0	0	2	0	0	0	0	175
07:00	2	222	63	2	13	3	0	2	1	0	0	0	0	308
08:00	5	304	81	7	22	3	1	1	3	0	0	0	0	427
09:00	3	320	106	7	21	2	0	0	3	0	0	0	0	462
10:00	8	287	109	3	22	1	0	2	0	0	0	0	0	432
11:00	3	316	114	6	25	3	0	1	2	0	0	0	0	470
12 PM	6	388	132	5	23	4	0	2	1	0	0	0	0	561
13:00	5	348	112	3	18	2	0	3	2	0	0	0	0	493
14:00	5	370	124	2	23	5	0	2	2	0	0	0	0	533
15:00	6	456	163	1	44	4	0	4	1	0	0	0	0	679
16:00	8	536	167	1	32	4	0	1	0	0	0	0	0	749
17:00	0	571	174	1	25	3	0	3	1	0	0	0	0	778
18:00	6	593	124	1	21	3	0	0	0	0	0	0	0	748
19:00	3	377	78	1	18	1	0	1	2	0	0	0	0	481
20:00	2	276	67	0	11	0	0	1	0	0	0	0	0	357
21:00	1	206	46	0	3	0	0	0	0	0	0	0	0	256
22:00	0	144	22	0	2	0	0	0	0	0	0	0	0	168
23:00	0	87	10	0	3	0	0	0	0	0	0	0	0	100
Total	65	6060	1772	42	342	42	1	23	22	0	0	0	0	8369
Percent	0.8%	72.4%	21.2%	0.5%	4.1%	0.5%	0.0%	0.3%	0.3%	0.0%	0.0%	0.0%	0.0%	
AM Peak	10:00	09:00	11:00	08:00	11:00	06:00	08:00	07:00	08:00					11:00
Vol.	8	320	114	7	25	3	1	2	3					470
PM Peak	16:00	18:00	17:00	12:00	15:00	14:00		15:00	13:00					17:00
Vol.	8	593	174	5	44	5		4	2					778
Grand Total	164	11919	3488	80	680	93	6	59	48	2	0	0	0	16539
Percent	1.0%	72.1%	21.1%	0.5%	4.1%	0.6%	0.0%	0.4%	0.3%	0.0%	0.0%	0.0%	0.0%	

Old Colony Planning Council
 70 School Street
 Brockton, MA 02301
 508-583-1833

Community: Easton
 Community#_FC: 88_U5
 Recorder #: Jamar #11
 Tube Layout: L6 Basic
 NB

Station ID:
 Site Code: 88
 Date Start: 09-Aug-06
 Date End: 10-Aug-06

Washington St, north of Main St

Start Time	Bikes	Cars & Trailers	2 Axle Long	Buses	2 Axle 6 Tire	3 Axle Single	4 Axle Single	<5 Axl Double	5 Axle Double	>6 Axl Double	<6 Axl Multi	6 Axle Multi	>6 Axl Multi	Total
08/09/06	0	35	17	0	5	0	0	0	0	0	0	0	0	57
01:00	0	15	3	0	3	0	0	0	0	0	0	0	0	21
02:00	0	9	4	0	1	0	0	0	0	0	0	0	0	14
03:00	0	13	3	0	3	0	0	0	0	0	0	0	0	19
04:00	3	22	7	0	2	0	0	0	0	0	0	0	0	34
05:00	2	57	37	0	20	0	0	0	1	0	0	0	0	117
06:00	10	286	137	6	64	4	0	1	0	0	0	0	0	508
07:00	14	438	213	5	59	2	0	7	4	0	0	0	0	742
08:00	3	470	219	3	71	1	1	2	3	0	0	0	0	773
09:00	4	316	176	6	37	5	1	4	0	0	0	0	0	549
10:00	2	246	164	2	48	8	1	2	0	0	0	0	0	473
11:00	1	263	142	7	44	4	2	4	0	0	0	0	0	467
12 PM	6	304	178	9	46	4	1	3	2	1	0	0	0	554
13:00	4	304	174	6	36	2	0	1	3	0	0	0	0	530
14:00	0	295	174	2	51	2	0	2	1	0	0	0	0	527
15:00	5	329	180	5	44	6	1	3	0	0	0	0	0	573
16:00	4	322	156	2	42	3	0	3	0	0	0	0	0	532
17:00	5	364	165	2	38	1	0	2	1	0	0	0	0	578
18:00	8	348	155	1	24	3	0	0	1	0	0	0	0	540
19:00	5	248	94	0	20	0	0	0	0	0	0	0	0	367
20:00	1	213	94	0	14	0	0	0	0	0	0	0	0	322
21:00	2	172	64	0	10	1	0	0	0	0	0	0	0	249
22:00	1	89	44	0	12	0	0	0	0	0	0	0	0	146
23:00	0	56	22	0	2	0	0	0	0	0	0	0	0	80
Total	80	5214	2622	56	696	46	7	34	16	1	0	0	0	8772
Percent	0.9%	59.4%	29.9%	0.6%	7.9%	0.5%	0.1%	0.4%	0.2%	0.0%	0.0%	0.0%	0.0%	
AM Peak	07:00	08:00	08:00	11:00	08:00	10:00	11:00	07:00	07:00					08:00
Vol.	14	470	219	7	71	8	2	7	4					773
PM Peak	18:00	17:00	15:00	12:00	14:00	15:00	12:00	12:00	13:00	12:00				17:00
Vol.	8	364	180	9	51	6	1	3	3	1				578

Old Colony Planning Council
 70 School Street
 Brockton, MA 02301
 508-583-1833

Community: Easton
 Community#_FC: 88_U5
 Recorder #: Jamar #11
 Tube Layout: L6 Basic
 NB

Station ID:
 Site Code: 88
 Date Start: 09-Aug-06
 Date End: 10-Aug-06

Washington St, north of Main St

Start Time	Bikes	Cars & Trailers	2 Axle Long	Buses	2 Axle 6 Tire	3 Axle Single	4 Axle Single	<5 Axl Double	5 Axle Double	>6 Axl Double	<6 Axl Multi	6 Axle Multi	>6 Axl Multi	Total
08/10/06	0	50	7	0	3	1	0	1	1	0	0	0	0	63
01:00	0	15	7	1	2	0	0	0	2	0	0	0	0	27
02:00	0	7	2	0	2	0	0	0	0	0	0	0	0	11
03:00	0	11	4	0	2	0	0	0	0	0	0	0	0	17
04:00	2	21	8	0	4	1	0	0	0	0	0	0	0	36
05:00	2	54	40	1	15	2	0	0	0	0	0	0	0	114
06:00	6	255	149	3	65	1	0	1	1	0	0	0	0	481
07:00	1	457	191	5	63	2	0	3	3	0	0	0	0	725
08:00	3	469	227	10	62	4	0	2	4	0	0	0	0	781
09:00	4	303	167	6	50	3	0	3	1	0	0	0	0	537
10:00	3	272	167	4	45	3	0	3	0	0	0	0	0	497
11:00	1	291	141	4	40	3	0	4	0	0	0	1	0	485
12 PM	3	300	159	6	41	1	0	1	1	0	0	0	0	512
13:00	3	317	160	0	40	2	0	2	0	0	0	0	0	524
14:00	4	307	171	1	38	2	1	1	2	0	0	0	0	527
15:00	3	351	163	4	34	4	0	4	0	0	0	0	0	563
16:00	6	352	180	4	39	3	0	1	0	0	0	0	0	585
17:00	7	410	170	5	39	2	0	3	0	0	0	0	0	636
18:00	4	318	150	0	32	0	0	1	1	0	0	0	0	506
19:00	2	256	99	0	22	0	0	0	0	0	0	0	0	379
20:00	0	222	99	3	12	0	0	0	0	0	0	0	0	336
21:00	0	139	60	2	4	0	0	0	0	0	0	0	0	205
22:00	1	114	34	1	7	0	0	0	0	0	0	0	0	157
23:00	0	76	26	0	7	0	0	0	1	0	0	0	0	110
Total	55	5367	2581	60	668	34	1	30	17	0	0	1	0	8814
Percent	0.6%	60.9%	29.3%	0.7%	7.6%	0.4%	0.0%	0.3%	0.2%	0.0%	0.0%	0.0%	0.0%	
AM Peak	06:00	08:00	08:00	08:00	06:00	08:00		11:00	08:00			11:00		08:00
Vol.	6	469	227	10	65	4		4	4			1		781
PM Peak	17:00	17:00	16:00	12:00	12:00	15:00	14:00	15:00	14:00					17:00
Vol.	7	410	180	6	41	4	1	4	2					636
Grand Total	135	10581	5203	116	1364	80	8	64	33	1	0	1	0	17586
Percent	0.8%	60.2%	29.6%	0.7%	7.8%	0.5%	0.0%	0.4%	0.2%	0.0%	0.0%	0.0%	0.0%	

Old Colony Planning Council
 70 School Street
 Brockton, MA 02301
 508-583-1833

Community: Easton
 Community#_FC: 88_U5
 Recorder #: Jamar #11
 Tube Layout: L6 Basic
 SB, NB

Station ID:
 Site Code: 88
 Date Start: 09-Aug-06
 Date End: 10-Aug-06

Washington St, north of Main St

Start Time	Bikes	Cars & Trailers	2 Axle Long	Buses	2 Axle 6 Tire	3 Axle Single	4 Axle Single	<5 Axl Double	5 Axle Double	>6 Axl Double	<6 Axl Multi	6 Axle Multi	>6 Axl Multi	Total
08/09/06	0	79	27	0	5	0	0	0	0	0	0	0	0	111
01:00	0	38	5	0	7	0	0	0	0	0	0	0	0	50
02:00	1	19	6	1	2	0	0	0	0	0	0	0	0	29
03:00	0	21	5	0	3	0	0	0	0	0	0	0	0	29
04:00	3	36	13	0	6	0	0	0	0	0	0	0	0	58
05:00	2	92	54	1	24	0	0	1	2	0	0	0	0	176
06:00	12	400	173	6	73	7	0	1	4	0	0	0	0	676
07:00	16	635	272	11	75	4	1	11	5	0	0	0	0	1030
08:00	11	748	301	10	90	2	2	3	4	0	0	0	0	1171
09:00	6	609	288	8	50	10	1	5	3	0	0	0	0	980
10:00	3	540	264	6	64	14	2	3	1	0	0	0	0	897
11:00	4	548	249	8	73	10	2	8	2	0	0	0	0	904
12 PM	10	646	285	12	70	11	2	6	2	1	0	0	0	1045
13:00	9	646	284	6	65	3	1	4	5	1	0	0	0	1024
14:00	2	657	286	5	74	10	0	6	5	0	0	0	0	1045
15:00	8	773	346	7	71	12	1	8	1	0	0	0	0	1227
16:00	16	837	322	6	90	4	0	6	2	1	0	0	0	1284
17:00	23	1005	323	4	68	3	0	3	3	0	0	0	0	1432
18:00	21	897	287	2	46	5	0	3	3	0	0	0	0	1264
19:00	12	628	170	1	30	0	0	1	0	0	0	0	0	842
20:00	7	478	164	0	20	0	0	1	0	0	0	0	0	670
21:00	5	398	104	0	11	2	0	0	0	0	0	0	0	520
22:00	4	219	75	0	12	0	0	0	0	0	0	0	0	310
23:00	4	124	35	0	5	0	0	0	0	0	0	0	0	168
Total	179	11073	4338	94	1034	97	12	70	42	3	0	0	0	16942
Percent	1.1%	65.4%	25.6%	0.6%	6.1%	0.6%	0.1%	0.4%	0.2%	0.0%	0.0%	0.0%	0.0%	
AM Peak	07:00	08:00	08:00	07:00	08:00	10:00	08:00	07:00	07:00					08:00
Vol.	16	748	301	11	90	14	2	11	5					1171
PM Peak	17:00	17:00	15:00	12:00	16:00	15:00	12:00	15:00	13:00	12:00				17:00
Vol.	23	1005	346	12	90	12	2	8	5	1				1432

Old Colony Planning Council
 70 School Street
 Brockton, MA 02301
 508-583-1833

Community: Easton
 Community#_FC: 88_U5
 Recorder #: Jamar #11
 Tube Layout: L6 Basic
 SB, NB

Station ID:
 Site Code: 88
 Date Start: 09-Aug-06
 Date End: 10-Aug-06

Washington St, north of Main St

Start Time	Bikes	Cars & Trailers	2 Axle Long	Buses	2 Axle 6 Tire	3 Axle Single	4 Axle Single	<5 Axl Double	5 Axle Double	>6 Axl Double	<6 Axl Multi	6 Axle Multi	>6 Axl Multi	Total
08/10/06	0	97	15	0	3	1	0	1	1	0	0	0	0	118
01:00	0	48	11	1	2	0	0	0	4	0	0	0	0	66
02:00	0	17	4	0	4	0	0	0	0	0	0	0	0	25
03:00	1	21	7	0	3	0	0	0	0	0	0	0	0	32
04:00	2	39	12	0	6	2	0	0	0	0	0	0	0	61
05:00	2	81	51	3	19	2	0	0	0	0	0	0	0	158
06:00	7	369	197	3	72	4	0	1	3	0	0	0	0	656
07:00	3	679	254	7	76	5	0	5	4	0	0	0	0	1033
08:00	8	773	308	17	84	7	1	3	7	0	0	0	0	1208
09:00	7	623	273	13	71	5	0	3	4	0	0	0	0	999
10:00	11	559	276	7	67	4	0	5	0	0	0	0	0	929
11:00	4	607	255	10	65	6	0	5	2	0	0	1	0	955
12 PM	9	688	291	11	64	5	0	3	2	0	0	0	0	1073
13:00	8	665	272	3	58	4	0	5	2	0	0	0	0	1017
14:00	9	677	295	3	61	7	1	3	4	0	0	0	0	1060
15:00	9	807	326	5	78	8	0	8	1	0	0	0	0	1242
16:00	14	888	347	5	71	7	0	2	0	0	0	0	0	1334
17:00	7	981	344	6	64	5	0	6	1	0	0	0	0	1414
18:00	10	911	274	1	53	3	0	1	1	0	0	0	0	1254
19:00	5	633	177	1	40	1	0	1	2	0	0	0	0	860
20:00	2	498	166	3	23	0	0	1	0	0	0	0	0	693
21:00	1	345	106	2	7	0	0	0	0	0	0	0	0	461
22:00	1	258	56	1	9	0	0	0	0	0	0	0	0	325
23:00	0	163	36	0	10	0	0	0	1	0	0	0	0	210
Total	120	11427	4353	102	1010	76	2	53	39	0	0	1	0	17183
Percent	0.7%	66.5%	25.3%	0.6%	5.9%	0.4%	0.0%	0.3%	0.2%	0.0%	0.0%	0.0%	0.0%	
AM Peak	10:00	08:00	08:00	08:00	08:00	08:00	08:00	07:00	08:00			11:00		08:00
Vol.	11	773	308	17	84	7	1	5	7			1		1208
PM Peak	16:00	17:00	16:00	12:00	15:00	15:00	14:00	15:00	14:00					17:00
Vol.	14	981	347	11	78	8	1	8	4					1414
Grand Total	299	22500	8691	196	2044	173	14	123	81	3	0	1	0	34125
Percent	0.9%	65.9%	25.5%	0.6%	6.0%	0.5%	0.0%	0.4%	0.2%	0.0%	0.0%	0.0%	0.0%	

Old Colony Planning Council
 70 School Street
 Brockton, MA 02301
 508-583-1833

Community: Easton
 Com #_U/RFC: 88_U6
 Recorder #: Jamar #12
 Tube Layout: L6 Basic

Station ID: 6245
 Site Code: 88
 Date Start: 23-Jul-08
 Date End: 24-Jul-08
 Elm St, east of Washington St (138)

Start Time	21-Jul-08		Tue		Wed		Thu		Fri		Sat		Sun		Week Average	
	EB	WB	EB	WB	EB	WB	EB	WB	EB	WB	EB	WB	EB	WB	EB	WB
12:00 AM	*	*	*	*	7	8	3	5	*	*	*	*	*	*	5	6
01:00	*	*	*	*	2	5	2	2	*	*	*	*	*	*	2	4
02:00	*	*	*	*	0	3	0	1	*	*	*	*	*	*	0	2
03:00	*	*	*	*	1	0	1	0	*	*	*	*	*	*	1	0
04:00	*	*	*	*	4	2	2	4	*	*	*	*	*	*	3	3
05:00	*	*	*	*	12	8	15	9	*	*	*	*	*	*	14	8
06:00	*	*	*	*	33	23	30	20	*	*	*	*	*	*	32	22
07:00	*	*	*	*	52	39	49	38	*	*	*	*	*	*	50	38
08:00	*	*	*	*	51	54	38	64	*	*	*	*	*	*	44	59
09:00	*	*	*	*	36	45	44	36	*	*	*	*	*	*	40	40
10:00	*	*	*	*	35	36	58	45	*	*	*	*	*	*	46	40
11:00	*	*	*	*	38	45	33	68	*	*	*	*	*	*	36	56
12:00 PM	*	*	*	*	77	62	41	62	*	*	*	*	*	*	59	62
01:00	*	*	*	*	48	45	49	38	*	*	*	*	*	*	48	42
02:00	*	*	*	*	44	50	50	58	*	*	*	*	*	*	47	54
03:00	*	*	*	*	53	74	56	64	*	*	*	*	*	*	54	69
04:00	*	*	*	*	50	71	52	66	*	*	*	*	*	*	51	68
05:00	*	*	*	*	64	72	63	67	*	*	*	*	*	*	64	70
06:00	*	*	*	*	60	65	52	48	*	*	*	*	*	*	56	56
07:00	*	*	*	*	36	62	42	64	*	*	*	*	*	*	39	63
08:00	*	*	*	*	32	29	31	40	*	*	*	*	*	*	32	34
09:00	*	*	*	*	18	35	22	32	*	*	*	*	*	*	20	34
10:00	*	*	*	*	11	18	14	27	*	*	*	*	*	*	12	22
11:00	*	*	*	*	5	15	11	11	*	*	*	*	*	*	8	13
Total Day	0	0	0	0	769	866	758	869	0	0	0	0	0	0	763	865
	0		0		1635		1627		0		0		0		1628	
AM Peak Vol.					07:00	08:00	10:00	11:00							07:00	08:00
					52	54	58	68							50	59
PM Peak Vol.					12:00	15:00	17:00	17:00							17:00	17:00
					77	74	63	67							64	70

Comb. Total 0 0 1635 1627 0 0 0 1628

Old Colony Planning Council
 70 School Street
 Brockton, MA 02301
 508-583-1833

Community: Easton
 Com #_U/RFC: 88_U6
 Recorder #: Jamar #12
 Tube Layout: L6 Basic

Station ID: 6245
 Site Code: 88
 Date Start: 23-Jul-08
 Date End: 24-Jul-08
 Elm St, east of Washington St (138)

Start Time	21-Jul-08 Mon	22-Jul-08 Tue	23-Jul-08 Wed	24-Jul-08 Thu	25-Jul-08 Fri	26-Jul-08 Sat	27-Jul-08 Sun	Week Average
12:00 AM	*	*	15	8	*	*	*	12
01:00	*	*	7	4	*	*	*	6
02:00	*	*	3	1	*	*	*	2
03:00	*	*	1	1	*	*	*	1
04:00	*	*	6	6	*	*	*	6
05:00	*	*	20	24	*	*	*	22
06:00	*	*	56	50	*	*	*	53
07:00	*	*	91	87	*	*	*	89
08:00	*	*	105	102	*	*	*	104
09:00	*	*	81	80	*	*	*	80
10:00	*	*	71	103	*	*	*	87
11:00	*	*	83	101	*	*	*	92
12:00 PM	*	*	139	103	*	*	*	121
01:00	*	*	93	87	*	*	*	90
02:00	*	*	94	108	*	*	*	101
03:00	*	*	127	120	*	*	*	124
04:00	*	*	121	118	*	*	*	120
05:00	*	*	136	130	*	*	*	133
06:00	*	*	125	100	*	*	*	112
07:00	*	*	98	106	*	*	*	102
08:00	*	*	61	71	*	*	*	66
09:00	*	*	53	54	*	*	*	54
10:00	*	*	29	41	*	*	*	35
11:00	*	*	20	22	*	*	*	21
Total	0	0	1635	1627	0	0	0	1633
Percentage	0.0%	0.0%	100.1%	99.6%	0.0%	0.0%	0.0%	
AM Peak			08:00	10:00				08:00
Vol.			105	103				104
PM Peak			12:00	17:00				17:00
Vol.			139	130				133

Old Colony Planning Council
 70 School Street
 Brockton, MA 02301
 508-583-1833

Community: Easton
 Com #_U/RFC: 88_U6
 Recorder #: Jamar #12
 Tube Layout: L6 Basic

Station ID: 6245

Site Code: 88

Date Start: 23-Jul-08

Date End: 24-Jul-08

Elm St, east of Washington St (138)

EB

Start Time	1 15	16 20	21 25	26 30	31 35	36 40	41 45	46 50	51 55	56 60	61 65	66 70	71 75	76 999	Total
07/23/08	3	0	0	0	3	1	0	0	0	0	0	0	0	0	7
01:00	0	0	0	0	1	1	0	0	0	0	0	0	0	0	2
02:00	0	0	0	0	0	0	0	0	0	0	0	0	0	0	0
03:00	0	0	0	0	1	0	0	0	0	0	0	0	0	0	1
04:00	0	0	0	0	1	1	2	0	0	0	0	0	0	0	4
05:00	0	0	0	2	4	3	2	1	0	0	0	0	0	0	12
06:00	3	0	0	3	11	10	5	0	1	0	0	0	0	0	33
07:00	4	0	0	4	17	19	4	4	0	0	0	0	0	0	52
08:00	6	0	2	3	19	16	4	1	0	0	0	0	0	0	51
09:00	1	0	0	5	11	18	0	0	1	0	0	0	0	0	36
10:00	6	0	0	2	9	14	3	1	0	0	0	0	0	0	35
11:00	3	0	0	8	17	10	0	0	0	0	0	0	0	0	38
12 PM	6	0	1	11	41	14	3	1	0	0	0	0	0	0	77
13:00	1	0	2	8	18	18	1	0	0	0	0	0	0	0	48
14:00	1	0	0	8	20	13	2	0	0	0	0	0	0	0	44
15:00	3	0	3	4	21	16	5	1	0	0	0	0	0	0	53
16:00	3	0	0	5	20	18	4	0	0	0	0	0	0	0	50
17:00	9	0	1	9	21	20	4	0	0	0	0	0	0	0	64
18:00	7	0	0	5	21	22	4	1	0	0	0	0	0	0	60
19:00	5	0	0	9	11	10	1	0	0	0	0	0	0	0	36
20:00	2	0	0	8	20	1	1	0	0	0	0	0	0	0	32
21:00	1	0	0	2	6	6	1	1	1	0	0	0	0	0	18
22:00	0	0	0	3	7	1	0	0	0	0	0	0	0	0	11
23:00	0	0	0	1	2	2	0	0	0	0	0	0	0	0	5
Total	64	0	9	100	302	234	46	11	3	0	0	0	0	0	769

Old Colony Planning Council
 70 School Street
 Brockton, MA 02301
 508-583-1833

Community: Easton
 Com #_U/RFC: 88_U6
 Recorder #: Jamar #12
 Tube Layout: L6 Basic

Station ID: 6245

Site Code: 88

Date Start: 23-Jul-08

Date End: 24-Jul-08

Elm St, east of Washington St (138)

EB

Start Time	15	16 20	21 25	26 30	31 35	36 40	41 45	46 50	51 55	56 60	61 65	66 70	71 75	76 999	Total
07/24/08	0	0	0	1	0	1	1	0	0	0	0	0	0	0	3
01:00	0	0	0	1	1	0	0	0	0	0	0	0	0	0	2
02:00	0	0	0	0	0	0	0	0	0	0	0	0	0	0	0
03:00	0	0	0	0	1	0	0	0	0	0	0	0	0	0	1
04:00	0	0	0	0	1	0	1	0	0	0	0	0	0	0	2
05:00	1	0	0	1	5	5	1	2	0	0	0	0	0	0	15
06:00	0	0	1	2	10	9	7	1	0	0	0	0	0	0	30
07:00	1	0	0	4	16	22	6	0	0	0	0	0	0	0	49
08:00	3	1	2	3	9	14	6	0	0	0	0	0	0	0	38
09:00	5	0	1	5	19	11	3	0	0	0	0	0	0	0	44
10:00	4	0	2	12	22	14	4	0	0	0	0	0	0	0	58
11:00	9	0	0	5	11	5	2	0	1	0	0	0	0	0	33
12 PM	4	0	2	5	20	6	2	2	0	0	0	0	0	0	41
13:00	3	0	1	14	17	11	3	0	0	0	0	0	0	0	49
14:00	1	0	3	10	18	15	3	0	0	0	0	0	0	0	50
15:00	2	0	1	8	26	17	2	0	0	0	0	0	0	0	56
16:00	3	0	2	7	26	14	0	0	0	0	0	0	0	0	52
17:00	3	0	1	13	27	12	7	0	0	0	0	0	0	0	63
18:00	2	0	1	7	24	15	3	0	0	0	0	0	0	0	52
19:00	3	0	2	5	15	14	1	1	1	0	0	0	0	0	42
20:00	4	0	0	3	15	4	4	1	0	0	0	0	0	0	31
21:00	4	0	0	3	11	2	1	1	0	0	0	0	0	0	22
22:00	0	0	0	3	7	4	0	0	0	0	0	0	0	0	14
23:00	0	0	1	4	4	1	1	0	0	0	0	0	0	0	11
Total	52	1	20	116	305	196	58	8	2	0	0	0	0	0	758
Grand Total	116	1	29	216	607	430	104	19	5	0	0	0	0	0	1527

15th Percentile : 27 MPH
 50th Percentile : 34 MPH
 85th Percentile : 39 MPH
 95th Percentile : 43 MPH

Stats
 Mean Speed(Average) : 33 MPH
 10 MPH Pace Speed : 31-40 MPH
 Number in Pace : 1037
 Percent in Pace : 67.9%
 Number of Vehicles > 30 MPH : 1165
 Percent of Vehicles > 30 MPH : 76.3%

Old Colony Planning Council
 70 School Street
 Brockton, MA 02301
 508-583-1833

Community: Easton
 Com #_U/RFC: 88_U6
 Recorder #: Jamar #12
 Tube Layout: L6 Basic

Station ID: 6245
 Site Code: 88
 Date Start: 23-Jul-08
 Date End: 24-Jul-08
 Elm St, east of Washington St (138)

WB

Start Time	15	20	25	30	35	40	45	50	55	60	65	70	75	999	Total
07/24/08	5	0	0	0	0	0	0	0	0	0	0	0	0	0	5
01:00	1	0	0	0	1	0	0	0	0	0	0	0	0	0	2
02:00	0	0	0	0	0	1	0	0	0	0	0	0	0	0	1
03:00	0	0	0	0	0	0	0	0	0	0	0	0	0	0	0
04:00	2	0	0	0	1	0	1	0	0	0	0	0	0	0	4
05:00	8	0	0	0	0	0	1	0	0	0	0	0	0	0	9
06:00	18	0	0	0	0	1	1	0	0	0	0	0	0	0	20
07:00	34	0	0	0	0	2	2	0	0	0	0	0	0	0	38
08:00	57	0	0	1	1	4	1	0	0	0	0	0	0	0	64
09:00	29	0	0	0	2	5	0	0	0	0	0	0	0	0	36
10:00	26	0	2	7	6	2	2	0	0	0	0	0	0	0	45
11:00	52	0	1	6	6	2	1	0	0	0	0	0	0	0	68
12 PM	32	0	1	13	10	6	0	0	0	0	0	0	0	0	62
13:00	9	1	1	9	13	4	1	0	0	0	0	0	0	0	38
14:00	45	0	0	0	5	6	2	0	0	0	0	0	0	0	58
15:00	58	0	0	0	1	3	2	0	0	0	0	0	0	0	64
16:00	55	0	0	0	3	3	3	2	0	0	0	0	0	0	66
17:00	52	0	0	1	5	4	5	0	0	0	0	0	0	0	67
18:00	44	0	0	1	0	3	0	0	0	0	0	0	0	0	48
19:00	62	0	0	0	2	0	0	0	0	0	0	0	0	0	64
20:00	39	0	0	0	1	0	0	0	0	0	0	0	0	0	40
21:00	29	0	0	0	1	1	1	0	0	0	0	0	0	0	32
22:00	27	0	0	0	0	0	0	0	0	0	0	0	0	0	27
23:00	11	0	0	0	0	0	0	0	0	0	0	0	0	0	11
Total	695	1	5	38	58	47	23	2	0	0	0	0	0	0	869
Grand Total	1396	1	8	59	115	114	40	2	0	0	0	0	0	0	1735

15th Percentile : 3 MPH
 50th Percentile : 10 MPH
 85th Percentile : 31 MPH
 95th Percentile : 38 MPH

Stats
 Mean Speed(Average) : 13 MPH
 10 MPH Pace Speed : 1-10 MPH
 Number in Pace : 931
 Percent in Pace : 53.7%
 Number of Vehicles > 30 MPH : 271
 Percent of Vehicles > 30 MPH : 15.6%

Old Colony Planning Council
 70 School Street
 Brockton, MA 02301
 508-583-1833

Community: Easton
 Com #_U/RFC: 88_U6
 Recorder #: Jamar #12
 Tube Layout: L6 Basic

Station ID: 6245
 Site Code: 88
 Date Start: 23-Jul-08
 Date End: 24-Jul-08

Elm St, east of Washington St (138)

EB, WB

Start Time	15	20	25	30	35	40	45	50	55	60	65	70	75	999	Total
07/23/08	9	0	0	0	3	2	1	0	0	0	0	0	0	0	15
01:00	5	0	0	0	1	1	0	0	0	0	0	0	0	0	7
02:00	3	0	0	0	0	0	0	0	0	0	0	0	0	0	3
03:00	0	0	0	0	1	0	0	0	0	0	0	0	0	0	1
04:00	1	0	0	0	1	2	2	0	0	0	0	0	0	0	6
05:00	7	0	0	3	4	3	2	1	0	0	0	0	0	0	20
06:00	20	0	0	3	14	11	7	0	1	0	0	0	0	0	56
07:00	39	0	0	4	18	20	6	4	0	0	0	0	0	0	91
08:00	57	0	2	5	20	16	4	1	0	0	0	0	0	0	105
09:00	38	0	0	6	12	22	2	0	1	0	0	0	0	0	81
10:00	37	0	0	2	11	17	3	1	0	0	0	0	0	0	71
11:00	43	0	0	8	19	12	1	0	0	0	0	0	0	0	83
12 PM	54	0	1	12	47	20	4	1	0	0	0	0	0	0	139
13:00	38	0	2	9	23	20	1	0	0	0	0	0	0	0	93
14:00	27	0	0	15	31	18	3	0	0	0	0	0	0	0	94
15:00	24	0	5	11	40	37	9	1	0	0	0	0	0	0	127
16:00	65	0	0	5	23	22	6	0	0	0	0	0	0	0	121
17:00	72	0	2	9	21	27	5	0	0	0	0	0	0	0	136
18:00	69	0	0	5	21	25	4	1	0	0	0	0	0	0	125
19:00	65	0	0	9	12	11	1	0	0	0	0	0	0	0	98
20:00	29	0	0	8	20	3	1	0	0	0	0	0	0	0	61
21:00	33	0	0	2	6	9	1	1	1	0	0	0	0	0	53
22:00	15	0	0	4	9	1	0	0	0	0	0	0	0	0	29
23:00	15	0	0	1	2	2	0	0	0	0	0	0	0	0	20
Total	765	0	12	121	359	301	63	11	3	0	0	0	0	0	1635

Old Colony Planning Council
 70 School Street
 Brockton, MA 02301
 508-583-1833

Community: Easton
 Com #_U/RFC: 88_U6
 Recorder #: Jamar #12
 Tube Layout: L6 Basic

Station ID: 6245
 Site Code: 88
 Date Start: 23-Jul-08
 Date End: 24-Jul-08

Elm St, east of Washington St (138)

EB, WB

Start Time	15	16 20	21 25	26 30	31 35	36 40	41 45	46 50	51 55	56 60	61 65	66 70	71 75	76 999	Total
07/24/08	5	0	0	1	0	1	1	0	0	0	0	0	0	0	8
01:00	1	0	0	1	2	0	0	0	0	0	0	0	0	0	4
02:00	0	0	0	0	0	1	0	0	0	0	0	0	0	0	1
03:00	0	0	0	0	1	0	0	0	0	0	0	0	0	0	1
04:00	2	0	0	0	2	0	2	0	0	0	0	0	0	0	6
05:00	9	0	0	1	5	5	2	2	0	0	0	0	0	0	24
06:00	18	0	1	2	10	10	8	1	0	0	0	0	0	0	50
07:00	35	0	0	4	16	24	8	0	0	0	0	0	0	0	87
08:00	60	1	2	4	10	18	7	0	0	0	0	0	0	0	102
09:00	34	0	1	5	21	16	3	0	0	0	0	0	0	0	80
10:00	30	0	4	19	28	16	6	0	0	0	0	0	0	0	103
11:00	61	0	1	11	17	7	3	0	1	0	0	0	0	0	101
12 PM	36	0	3	18	30	12	2	2	0	0	0	0	0	0	103
13:00	12	1	2	23	30	15	4	0	0	0	0	0	0	0	87
14:00	46	0	3	10	23	21	5	0	0	0	0	0	0	0	108
15:00	60	0	1	8	27	20	4	0	0	0	0	0	0	0	120
16:00	58	0	2	7	29	17	3	2	0	0	0	0	0	0	118
17:00	55	0	1	14	32	16	12	0	0	0	0	0	0	0	130
18:00	46	0	1	8	24	18	3	0	0	0	0	0	0	0	100
19:00	65	0	2	5	17	14	1	1	1	0	0	0	0	0	106
20:00	43	0	0	3	16	4	4	1	0	0	0	0	0	0	71
21:00	33	0	0	3	12	3	2	1	0	0	0	0	0	0	54
22:00	27	0	0	3	7	4	0	0	0	0	0	0	0	0	41
23:00	11	0	1	4	4	1	1	0	0	0	0	0	0	0	22
Total	747	2	25	154	363	243	81	10	2	0	0	0	0	0	1627
Grand Total	1512	2	37	275	722	544	144	21	5	0	0	0	0	0	3262

15th Percentile : 5 MPH
 50th Percentile : 27 MPH
 85th Percentile : 38 MPH
 95th Percentile : 41 MPH

Stats
 Mean Speed(Average) : 22 MPH
 10 MPH Pace Speed : 31-40 MPH
 Number in Pace : 1266
 Percent in Pace : 38.8%
 Number of Vehicles > 30 MPH : 1436
 Percent of Vehicles > 30 MPH : 44.0%

Old Colony Planning Council
 70 School Street
 Brockton, MA 02301
 508-583-1833

Community: Easton
 Com #_U/RFC: 88_U6
 Recorder #: Jamar #13
 Tube Layout: L6 Basic

Station ID: 6246
 Site Code: 88
 Date Start: 22-Jul-08
 Date End: 23-Jul-08
 Elm St, west of Washington St (138)

Start Time	21-Jul-08		Tue		Wed		Thu		Fri		Sat		Sun		Week Average	
	EB	WB	EB	WB	EB	WB	EB	WB	EB	WB	EB	WB	EB	WB	EB	WB
12:00 AM	*	*	10	18	11	14	*	*	*	*	*	*	*	*	10	16
01:00	*	*	3	5	9	10	*	*	*	*	*	*	*	*	6	8
02:00	*	*	4	4	1	4	*	*	*	*	*	*	*	*	2	4
03:00	*	*	5	0	5	1	*	*	*	*	*	*	*	*	5	0
04:00	*	*	7	3	6	5	*	*	*	*	*	*	*	*	6	4
05:00	*	*	42	16	45	13	*	*	*	*	*	*	*	*	44	14
06:00	*	*	94	18	88	17	*	*	*	*	*	*	*	*	91	18
07:00	*	*	129	45	120	45	*	*	*	*	*	*	*	*	124	45
08:00	*	*	159	110	154	116	*	*	*	*	*	*	*	*	156	113
09:00	*	*	131	98	141	108	*	*	*	*	*	*	*	*	136	103
10:00	*	*	100	100	121	85	*	*	*	*	*	*	*	*	110	92
11:00	*	*	125	108	107	118	*	*	*	*	*	*	*	*	116	113
12:00 PM	*	*	127	147	148	153	*	*	*	*	*	*	*	*	138	150
01:00	*	*	130	124	125	133	*	*	*	*	*	*	*	*	128	128
02:00	*	*	94	124	104	124	*	*	*	*	*	*	*	*	99	124
03:00	*	*	101	150	100	180	*	*	*	*	*	*	*	*	100	165
04:00	*	*	125	167	114	195	*	*	*	*	*	*	*	*	120	181
05:00	*	*	130	219	106	175	*	*	*	*	*	*	*	*	118	197
06:00	*	*	108	186	99	159	*	*	*	*	*	*	*	*	104	172
07:00	*	*	105	132	90	182	*	*	*	*	*	*	*	*	98	157
08:00	*	*	65	117	81	100	*	*	*	*	*	*	*	*	73	108
09:00	*	*	33	66	39	92	*	*	*	*	*	*	*	*	36	79
10:00	*	*	16	58	19	45	*	*	*	*	*	*	*	*	18	52
11:00	*	*	19	36	13	39	*	*	*	*	*	*	*	*	16	38
Total Day	0	0	1862	2051	1846	2113	0	0	0	0	0	0	0	0	1854	2081
AM Peak Vol.			159	110	154	118									156	113
PM Peak Vol.			130	219	148	195									138	197

Comb. Total 0 3913 3959 0 0 0 0 3935

Old Colony Planning Council
 70 School Street
 Brockton, MA 02301
 508-583-1833

Community: Easton
 Com #_U/RFC: 88_U6
 Recorder #: Jamar #13
 Tube Layout: L6 Basic

Station ID: 6246
 Site Code: 88
 Date Start: 22-Jul-08
 Date End: 23-Jul-08
 Elm St, west of Washington St (138)

Start Time	21-Jul-08 Mon	22-Jul-08 Tue	23-Jul-08 Wed	24-Jul-08 Thu	25-Jul-08 Fri	26-Jul-08 Sat	27-Jul-08 Sun	Week Average
12:00 AM	*	28	25	*	*	*	*	26
01:00	*	8	19	*	*	*	*	14
02:00	*	8	5	*	*	*	*	6
03:00	*	5	6	*	*	*	*	6
04:00	*	10	11	*	*	*	*	10
05:00	*	58	58	*	*	*	*	58
06:00	*	112	105	*	*	*	*	108
07:00	*	174	165	*	*	*	*	170
08:00	*	269	270	*	*	*	*	270
09:00	*	229	249	*	*	*	*	239
10:00	*	200	206	*	*	*	*	203
11:00	*	233	225	*	*	*	*	229
12:00 PM	*	274	301	*	*	*	*	288
01:00	*	254	258	*	*	*	*	256
02:00	*	218	228	*	*	*	*	223
03:00	*	251	280	*	*	*	*	266
04:00	*	292	309	*	*	*	*	300
05:00	*	349	281	*	*	*	*	315
06:00	*	294	258	*	*	*	*	276
07:00	*	237	272	*	*	*	*	254
08:00	*	182	181	*	*	*	*	182
09:00	*	99	131	*	*	*	*	115
10:00	*	74	64	*	*	*	*	69
11:00	*	55	52	*	*	*	*	54
Total	0	3913	3959	0	0	0	0	3937
Percentage	0.0%	99.4%	100.6%	0.0%	0.0%	0.0%	0.0%	
AM Peak		08:00	08:00					08:00
Vol.		269	270					270
PM Peak		17:00	16:00					17:00
Vol.		349	309					315

Old Colony Planning Council
 70 School Street
 Brockton, MA 02301
 508-583-1833

Community: Easton
 Com #_U/RFC: 88_U6
 Recorder #: Jamar #13
 Tube Layout: L6 Basic

Station ID: 6246

Site Code: 88

Date Start: 22-Jul-08

Date End: 23-Jul-08

Elm St, west of Washington St (138)

EB

Start Time	1 15	16 20	21 25	26 30	31 35	36 40	41 45	46 50	51 55	56 60	61 65	66 70	71 75	76 999	Total
07/22/08	0	0	0	1	1	5	2	0	1	0	0	0	0	0	10
01:00	0	0	0	1	0	1	0	1	0	0	0	0	0	0	3
02:00	0	0	0	0	1	2	1	0	0	0	0	0	0	0	4
03:00	0	0	0	0	2	1	2	0	0	0	0	0	0	0	5
04:00	0	0	0	1	0	1	3	2	0	0	0	0	0	0	7
05:00	0	0	0	2	2	13	13	9	3	0	0	0	0	0	42
06:00	0	0	0	1	14	34	28	12	2	3	0	0	0	0	94
07:00	1	0	0	2	7	61	45	13	0	0	0	0	0	0	129
08:00	5	0	0	4	22	78	43	7	0	0	0	0	0	0	159
09:00	1	0	0	3	22	59	40	5	0	0	1	0	0	0	131
10:00	0	0	0	9	26	41	22	2	0	0	0	0	0	0	100
11:00	3	0	0	1	24	63	27	7	0	0	0	0	0	0	125
12 PM	1	0	2	3	26	59	31	3	1	0	1	0	0	0	127
13:00	5	0	2	8	36	53	20	5	0	1	0	0	0	0	130
14:00	2	0	0	1	27	49	13	2	0	0	0	0	0	0	94
15:00	1	0	0	6	23	47	18	6	0	0	0	0	0	0	101
16:00	1	0	1	8	25	51	37	1	1	0	0	0	0	0	125
17:00	4	0	1	0	38	47	38	2	0	0	0	0	0	0	130
18:00	2	0	1	2	14	48	38	2	1	0	0	0	0	0	108
19:00	2	0	0	4	25	42	25	7	0	0	0	0	0	0	105
20:00	2	0	0	2	22	28	9	2	0	0	0	0	0	0	65
21:00	0	0	0	0	10	13	10	0	0	0	0	0	0	0	33
22:00	0	0	0	0	5	6	5	0	0	0	0	0	0	0	16
23:00	1	0	0	2	4	8	2	2	0	0	0	0	0	0	19
Total	31	0	7	61	376	810	472	90	9	4	2	0	0	0	1862

Old Colony Planning Council
 70 School Street
 Brockton, MA 02301
 508-583-1833

Community: Easton
 Com #_U/RFC: 88_U6
 Recorder #: Jamar #13
 Tube Layout: L6 Basic

Station ID: 6246

Site Code: 88

Date Start: 22-Jul-08

Date End: 23-Jul-08

Elm St, west of Washington St (138)

EB

Start Time	15	16 20	21 25	26 30	31 35	36 40	41 45	46 50	51 55	56 60	61 65	66 70	71 75	76 999	Total
07/23/08	0	0	0	0	4	3	3	0	1	0	0	0	0	0	11
01:00	0	0	0	0	6	2	1	0	0	0	0	0	0	0	9
02:00	0	0	0	0	0	1	0	0	0	0	0	0	0	0	1
03:00	0	0	0	1	1	2	1	0	0	0	0	0	0	0	5
04:00	0	0	0	1	0	2	1	2	0	0	0	0	0	0	6
05:00	0	0	1	0	4	14	22	2	1	1	0	0	0	0	45
06:00	0	0	0	1	4	41	33	9	0	0	0	0	0	0	88
07:00	0	0	0	2	18	54	39	7	0	0	0	0	0	0	120
08:00	2	0	0	9	37	72	30	2	2	0	0	0	0	0	154
09:00	3	1	0	4	31	69	27	5	1	0	0	0	0	0	141
10:00	1	0	0	4	27	50	34	4	1	0	0	0	0	0	121
11:00	0	0	0	3	29	49	21	4	1	0	0	0	0	0	107
12 PM	3	0	0	1	33	82	23	5	1	0	0	0	0	0	148
13:00	0	0	0	8	45	50	18	3	1	0	0	0	0	0	125
14:00	2	1	0	2	34	47	15	3	0	0	0	0	0	0	104
15:00	0	0	0	0	18	55	24	3	0	0	0	0	0	0	100
16:00	5	0	0	1	32	43	24	7	2	0	0	0	0	0	114
17:00	4	0	0	6	21	43	31	1	0	0	0	0	0	0	106
18:00	1	0	0	0	11	49	35	3	0	0	0	0	0	0	99
19:00	1	0	1	0	11	52	21	4	0	0	0	0	0	0	90
20:00	1	0	0	1	22	36	18	3	0	0	0	0	0	0	81
21:00	1	0	0	5	7	17	7	2	0	0	0	0	0	0	39
22:00	0	0	0	2	6	6	5	0	0	0	0	0	0	0	19
23:00	0	0	0	2	6	1	4	0	0	0	0	0	0	0	13
Total	24	2	2	53	407	840	437	69	11	1	0	0	0	0	1846
Grand Total	55	2	9	114	783	1650	909	159	20	5	2	0	0	0	3708

15th Percentile : 33 MPH
 50th Percentile : 38 MPH
 85th Percentile : 43 MPH
 95th Percentile : 46 MPH

Stats
 Mean Speed(Average) : 38 MPH
 10 MPH Pace Speed : 36-45 MPH
 Number in Pace : 2559
 Percent in Pace : 69.0%
 Number of Vehicles > 35 MPH : 2745
 Percent of Vehicles > 35 MPH : 74.0%

Old Colony Planning Council
 70 School Street
 Brockton, MA 02301
 508-583-1833

Community: Easton
 Com #_U/RFC: 88_U6
 Recorder #: Jamar #13
 Tube Layout: L6 Basic

Station ID: 6246

Site Code: 88

Date Start: 22-Jul-08

Date End: 23-Jul-08

Elm St, west of Washington St (138)

WB

Start Time	15	16 20	21 25	26 30	31 35	36 40	41 45	46 50	51 55	56 60	61 65	66 70	71 75	76 999	Total
07/22/08	0	0	0	0	0	13	3	2	0	0	0	0	0	0	18
01:00	0	0	1	0	1	2	1	0	0	0	0	0	0	0	5
02:00	0	0	0	0	0	2	1	1	0	0	0	0	0	0	4
03:00	0	0	0	0	0	0	0	0	0	0	0	0	0	0	0
04:00	0	0	0	0	0	1	2	0	0	0	0	0	0	0	3
05:00	0	0	0	1	6	4	3	2	0	0	0	0	0	0	16
06:00	2	0	0	0	6	4	3	2	1	0	0	0	0	0	18
07:00	1	0	0	1	4	21	11	5	2	0	0	0	0	0	45
08:00	3	0	0	5	14	50	33	5	0	0	0	0	0	0	110
09:00	2	1	1	1	20	45	23	4	1	0	0	0	0	0	98
10:00	3	0	0	3	36	36	20	1	0	1	0	0	0	0	100
11:00	2	0	2	6	19	45	23	11	0	0	0	0	0	0	108
12 PM	1	0	0	7	32	63	37	7	0	0	0	0	0	0	147
13:00	2	1	0	7	25	53	27	9	0	0	0	0	0	0	124
14:00	1	0	0	2	22	49	41	9	0	0	0	0	0	0	124
15:00	1	0	0	4	23	62	46	12	2	0	0	0	0	0	150
16:00	2	0	0	3	17	72	59	11	3	0	0	0	0	0	167
17:00	4	0	0	3	38	78	76	17	3	0	0	0	0	0	219
18:00	2	0	0	2	24	75	64	16	2	1	0	0	0	0	186
19:00	2	0	0	0	18	64	34	13	1	0	0	0	0	0	132
20:00	2	0	0	4	26	49	30	5	1	0	0	0	0	0	117
21:00	0	0	0	0	8	27	24	7	0	0	0	0	0	0	66
22:00	0	0	0	1	14	19	14	9	0	1	0	0	0	0	58
23:00	1	0	0	3	9	13	6	4	0	0	0	0	0	0	36
Total	31	2	4	53	362	847	581	152	16	3	0	0	0	0	2051

Old Colony Planning Council
 70 School Street
 Brockton, MA 02301
 508-583-1833

Community: Easton
 Com #_U/RFC: 88_U6
 Recorder #: Jamar #13
 Tube Layout: L6 Basic

Station ID: 6246
 Site Code: 88
 Date Start: 22-Jul-08
 Date End: 23-Jul-08
 Elm St, west of Washington St (138)

WB

Start Time	15	16 20	21 25	26 30	31 35	36 40	41 45	46 50	51 55	56 60	61 65	66 70	71 75	76 999	Total
07/23/08	0	0	1	0	3	5	5	0	0	0	0	0	0	0	14
01:00	0	0	0	2	4	3	0	1	0	0	0	0	0	0	10
02:00	0	0	0	0	0	0	1	3	0	0	0	0	0	0	4
03:00	0	0	0	0	0	1	0	0	0	0	0	0	0	0	1
04:00	0	0	0	0	0	3	1	1	0	0	0	0	0	0	5
05:00	0	0	0	2	3	2	5	1	0	0	0	0	0	0	13
06:00	0	0	0	0	4	5	3	5	0	0	0	0	0	0	17
07:00	0	0	0	1	6	18	18	2	0	0	0	0	0	0	45
08:00	2	0	1	0	15	54	40	4	0	0	0	0	0	0	116
09:00	4	0	0	4	21	44	30	5	0	0	0	0	0	0	108
10:00	2	0	0	2	11	42	21	4	2	0	1	0	0	0	85
11:00	0	0	0	4	33	52	24	4	1	0	0	0	0	0	118
12 PM	3	0	0	2	32	59	47	8	1	1	0	0	0	0	153
13:00	0	0	0	8	32	50	39	4	0	0	0	0	0	0	133
14:00	4	0	0	1	20	60	30	6	3	0	0	0	0	0	124
15:00	0	0	1	4	28	72	63	10	2	0	0	0	0	0	180
16:00	6	0	0	3	27	77	69	12	1	0	0	0	0	0	195
17:00	8	0	1	9	42	67	43	4	1	0	0	0	0	0	175
18:00	3	0	0	3	18	67	46	19	3	0	0	0	0	0	159
19:00	2	0	0	4	23	77	60	13	3	0	0	0	0	0	182
20:00	1	0	0	2	28	43	20	5	1	0	0	0	0	0	100
21:00	2	0	0	8	21	43	18	0	0	0	0	0	0	0	92
22:00	1	0	0	0	14	19	9	2	0	0	0	0	0	0	45
23:00	0	0	0	0	11	14	10	4	0	0	0	0	0	0	39
Total	38	0	4	59	396	877	602	117	18	1	1	0	0	0	2113
Grand Total	69	2	8	112	758	1724	1183	269	34	4	1	0	0	0	4164

15th Percentile : 33 MPH
 50th Percentile : 39 MPH
 85th Percentile : 44 MPH
 95th Percentile : 47 MPH

Stats
 Mean Speed(Average) : 38 MPH
 10 MPH Pace Speed : 36-45 MPH
 Number in Pace : 2907
 Percent in Pace : 69.8%
 Number of Vehicles > 35 MPH : 3215
 Percent of Vehicles > 35 MPH : 77.2%

Old Colony Planning Council
 70 School Street
 Brockton, MA 02301
 508-583-1833

Community: Easton
 Com #_U/RFC: 88_U6
 Recorder #: Jamar #13
 Tube Layout: L6 Basic

Station ID: 6246

Site Code: 88

Date Start: 22-Jul-08

Date End: 23-Jul-08

Elm St, west of Washington St (138)

EB, WB

Start Time	15	20	25	30	35	40	45	50	55	60	65	70	75	999	Total
07/22/08	0	0	0	1	1	18	5	2	1	0	0	0	0	0	28
01:00	0	0	1	1	1	3	1	1	0	0	0	0	0	0	8
02:00	0	0	0	0	1	4	2	1	0	0	0	0	0	0	8
03:00	0	0	0	0	2	1	2	0	0	0	0	0	0	0	5
04:00	0	0	0	1	0	2	5	2	0	0	0	0	0	0	10
05:00	0	0	0	3	8	17	16	11	3	0	0	0	0	0	58
06:00	2	0	0	1	20	38	31	14	3	3	0	0	0	0	112
07:00	2	0	0	3	11	82	56	18	2	0	0	0	0	0	174
08:00	8	0	0	9	36	128	76	12	0	0	0	0	0	0	269
09:00	3	1	1	4	42	104	63	9	1	0	1	0	0	0	229
10:00	3	0	0	12	62	77	42	3	0	1	0	0	0	0	200
11:00	5	0	2	7	43	108	50	18	0	0	0	0	0	0	233
12 PM	2	0	2	10	58	122	68	10	1	0	1	0	0	0	274
13:00	7	1	2	15	61	106	47	14	0	1	0	0	0	0	254
14:00	3	0	0	3	49	98	54	11	0	0	0	0	0	0	218
15:00	2	0	0	10	46	109	64	18	2	0	0	0	0	0	251
16:00	3	0	1	11	42	123	96	12	4	0	0	0	0	0	292
17:00	8	0	1	3	76	125	114	19	3	0	0	0	0	0	349
18:00	4	0	1	4	38	123	102	18	3	1	0	0	0	0	294
19:00	4	0	0	4	43	106	59	20	1	0	0	0	0	0	237
20:00	4	0	0	6	48	77	39	7	1	0	0	0	0	0	182
21:00	0	0	0	0	18	40	34	7	0	0	0	0	0	0	99
22:00	0	0	0	1	19	25	19	9	0	1	0	0	0	0	74
23:00	2	0	0	5	13	21	8	6	0	0	0	0	0	0	55
Total	62	2	11	114	738	1657	1053	242	25	7	2	0	0	0	3913

Old Colony Planning Council
 70 School Street
 Brockton, MA 02301
 508-583-1833

Community: Easton
 Com #_U/RFC: 88_U6
 Recorder #: Jamar #13
 Tube Layout: L6 Basic

Station ID: 6246
 Site Code: 88
 Date Start: 22-Jul-08
 Date End: 23-Jul-08

Elm St, west of Washington St (138)

EB, WB

Start Time	15	20	25	30	35	40	45	50	55	60	65	70	75	999	Total
07/23/08	0	0	1	0	7	8	8	0	1	0	0	0	0	0	25
01:00	0	0	0	2	10	5	1	1	0	0	0	0	0	0	19
02:00	0	0	0	0	0	1	1	3	0	0	0	0	0	0	5
03:00	0	0	0	1	1	3	1	0	0	0	0	0	0	0	6
04:00	0	0	0	1	0	5	2	3	0	0	0	0	0	0	11
05:00	0	0	1	2	7	16	27	3	1	1	0	0	0	0	58
06:00	0	0	0	1	8	46	36	14	0	0	0	0	0	0	105
07:00	0	0	0	3	24	72	57	9	0	0	0	0	0	0	165
08:00	4	0	1	9	52	126	70	6	2	0	0	0	0	0	270
09:00	7	1	0	8	52	113	57	10	1	0	0	0	0	0	249
10:00	3	0	0	6	38	92	55	8	3	0	1	0	0	0	206
11:00	0	0	0	7	62	101	45	8	2	0	0	0	0	0	225
12 PM	6	0	0	3	65	141	70	13	2	1	0	0	0	0	301
13:00	0	0	0	16	77	100	57	7	1	0	0	0	0	0	258
14:00	6	1	0	3	54	107	45	9	3	0	0	0	0	0	228
15:00	0	0	1	4	46	127	87	13	2	0	0	0	0	0	280
16:00	11	0	0	4	59	120	93	19	3	0	0	0	0	0	309
17:00	12	0	1	15	63	110	74	5	1	0	0	0	0	0	281
18:00	4	0	0	3	29	116	81	22	3	0	0	0	0	0	258
19:00	3	0	1	4	34	129	81	17	3	0	0	0	0	0	272
20:00	2	0	0	3	50	79	38	8	1	0	0	0	0	0	181
21:00	3	0	0	13	28	60	25	2	0	0	0	0	0	0	131
22:00	1	0	0	2	20	25	14	2	0	0	0	0	0	0	64
23:00	0	0	0	2	17	15	14	4	0	0	0	0	0	0	52
Total	62	2	6	112	803	1717	1039	186	29	2	1	0	0	0	3959
Grand Total	124	4	17	226	1541	3374	2092	428	54	9	3	0	0	0	7872

15th Percentile : 33 MPH
 50th Percentile : 38 MPH
 85th Percentile : 44 MPH
 95th Percentile : 47 MPH

Stats
 Mean Speed(Average) : 38 MPH
 10 MPH Pace Speed : 36-45 MPH
 Number in Pace : 5466
 Percent in Pace : 69.4%
 Number of Vehicles > 35 MPH : 5960
 Percent of Vehicles > 35 MPH : 75.7%

Old Colony Planning Council
70 School Street
Brockton, MA 02301
508-583-1833

Community: Easton
Com #_U/RFC: 88_U6
Recorder #: Jamar #13
Tube Layout: L6 Basic

Station ID: 6246
Site Code: 88
Date Start: 22-Jul-08
Date End: 23-Jul-08
Elm St, west of Washington St (138)

EB

Start Time	Bikes	Cars & Trailers	2 Axle Long	Buses	2 Axle 6 Tire	3 Axle Single	4 Axle Single	<5 Axl Double	5 Axle Double	>6 Axl Double	<6 Axl Multi	6 Axle Multi	>6 Axl Multi	Total	Truck Total
07/23/08	0	11	0	0	0	0	0	0	0	0	0	0	0	11	0
01:00	0	8	1	0	0	0	0	0	0	0	0	0	0	9	0
02:00	0	1	0	0	0	0	0	0	0	0	0	0	0	1	0
03:00	0	4	1	0	0	0	0	0	0	0	0	0	0	5	0
04:00	0	5	1	0	0	0	0	0	0	0	0	0	0	6	0
05:00	0	32	12	0	1	0	0	0	0	0	0	0	0	45	1
06:00	0	63	21	0	2	1	0	0	1	0	0	0	0	88	4
07:00	1	103	15	0	0	1	0	0	0	0	0	0	0	120	1
08:00	0	118	33	0	2	1	0	0	0	0	0	0	0	154	3
09:00	0	109	26	0	3	2	0	1	0	0	0	0	0	141	6
10:00	0	85	35	0	1	0	0	0	0	0	0	0	0	121	1
11:00	0	88	19	0	0	0	0	0	0	0	0	0	0	107	0
12 PM	0	112	33	0	2	1	0	0	0	0	0	0	0	148	3
13:00	0	91	30	0	4	0	0	0	0	0	0	0	0	125	4
14:00	1	76	18	1	7	0	0	0	0	0	0	0	0	103	8
15:00	0	79	20	0	0	0	0	1	0	0	0	0	0	100	1
16:00	0	86	21	2	3	2	0	0	0	0	0	0	0	114	7
17:00	0	88	16	0	2	0	0	0	0	0	0	0	0	106	2
18:00	0	77	20	0	1	1	0	0	0	0	0	0	0	99	2
19:00	1	78	11	0	0	0	0	0	0	0	0	0	0	90	0
20:00	0	65	16	0	0	0	0	0	0	0	0	0	0	81	0
21:00	0	31	6	0	2	0	0	0	0	0	0	0	0	39	2
22:00	0	14	5	0	0	0	0	0	0	0	0	0	0	19	0
23:00	0	12	1	0	0	0	0	0	0	0	0	0	0	13	0
Total	3	1436	361	3	30	9	0	2	1	0	0	0	0	1845	45
Percent	0.2%	77.8%	19.6%	0.2%	1.6%	0.5%	0.0%	0.1%	0.1%	0.0%	0.0%	0.0%	0.0%		2.4%
AM Peak	07:00	08:00	10:00		09:00	09:00		09:00	06:00					08:00	09:00
Vol.	1	118	35		3	2		1	1					154	6
PM Peak	14:00	12:00	12:00	16:00	14:00	16:00		15:00						12:00	14:00
Vol.	1	112	33	2	7	2		1						148	8
Grand Total	16	2836	745	6	72	21	0	5	3	0	0	0	0	3704	107
Percent	0.4%	76.6%	20.1%	0.2%	1.9%	0.6%	0.0%	0.1%	0.1%	0.0%	0.0%	0.0%	0.0%		2.9%

Old Colony Planning Council
 70 School Street
 Brockton, MA 02301
 508-583-1833

Community: Easton
 Com #_U/RFC: 88_U6
 Recorder #: Jamar #13
 Tube Layout: L6 Basic

Station ID: 6246
 Site Code: 88
 Date Start: 22-Jul-08
 Date End: 23-Jul-08
 Elm St, west of Washington St (138)

WB	Start Time	Bikes	Cars & Trailers	2 Axle Long	Buses	2 Axle 6 Tire	3 Axle Single	4 Axle Single	<5 Axl Double	5 Axle Double	>6 Axl Double	<6 Axl Multi	6 Axle Multi	>6 Axl Multi	Total	Truck Total
	07/22/08	0	14	4	0	0	0	0	0	0	0	0	0	0	18	0
	01:00	0	3	2	0	0	0	0	0	0	0	0	0	0	5	0
	02:00	0	3	1	0	0	0	0	0	0	0	0	0	0	4	0
	03:00	0	0	0	0	0	0	0	0	0	0	0	0	0	0	0
	04:00	0	3	0	0	0	0	0	0	0	0	0	0	0	3	0
	05:00	0	12	3	0	0	1	0	0	0	0	0	0	0	16	1
	06:00	0	12	4	0	2	0	0	0	0	0	0	0	0	18	2
	07:00	0	26	15	1	2	1	0	0	0	0	0	0	0	45	4
	08:00	0	71	32	0	5	2	0	0	0	0	0	0	0	110	7
	09:00	0	70	24	1	2	0	0	0	0	0	0	0	0	97	3
	10:00	0	73	22	0	4	1	0	0	0	0	0	0	0	100	5
	11:00	0	74	27	0	5	0	0	1	0	0	0	0	0	107	6
	12 PM	0	102	37	0	6	1	0	1	0	0	0	0	0	147	8
	13:00	0	94	27	0	2	1	0	0	0	0	0	0	0	124	3
	14:00	0	89	29	0	3	1	0	2	0	0	0	0	0	124	6
	15:00	0	110	30	0	8	2	0	0	0	0	0	0	0	150	10
	16:00	1	118	39	0	9	0	0	0	0	0	0	0	0	167	9
	17:00	1	165	47	0	5	0	0	1	0	0	0	0	0	219	6
	18:00	0	148	30	0	8	0	0	0	0	0	0	0	0	186	8
	19:00	0	104	24	0	3	0	0	1	0	0	0	0	0	132	4
	20:00	1	88	25	0	3	0	0	0	0	0	0	0	0	117	3
	21:00	0	53	10	0	3	0	0	0	0	0	0	0	0	66	3
	22:00	1	45	10	0	2	0	0	0	0	0	0	0	0	58	2
	23:00	1	26	8	0	0	1	0	0	0	0	0	0	0	36	1
	Total	5	1503	450	2	72	11	0	6	0	0	0	0	0	2049	91
	Percent	0.2%	73.4%	22.0%	0.1%	3.5%	0.5%	0.0%	0.3%	0.0%	0.0%	0.0%	0.0%	0.0%		4.4%
	AM Peak		11:00	08:00	07:00	08:00	08:00		11:00						08:00	08:00
	Vol.		74	32	1	5	2		1						110	7
	PM Peak	16:00	17:00	17:00		16:00	15:00		14:00						17:00	15:00
	Vol.	1	165	47		9	2		2						219	10

Old Colony Planning Council
 70 School Street
 Brockton, MA 02301
 508-583-1833

Community: Easton
 Com #_U/RFC: 88_U6
 Recorder #: Jamar #13
 Tube Layout: L6 Basic

Station ID: 6246
 Site Code: 88
 Date Start: 22-Jul-08
 Date End: 23-Jul-08
 Elm St, west of Washington St (138)

EB, WB

Start Time	Bikes	Cars & Trailers	2 Axle Long	Buses	2 Axle 6 Tire	3 Axle Single	4 Axle Single	<5 Axl Double	5 Axle Double	>6 Axl Double	<6 Axl Multi	6 Axle Multi	>6 Axl Multi	Total	Truck Total
07/22/08	0	23	4	0	1	0	0	0	0	0	0	0	0	28	1
01:00	0	4	4	0	0	0	0	0	0	0	0	0	0	8	0
02:00	0	6	2	0	0	0	0	0	0	0	0	0	0	8	0
03:00	0	3	2	0	0	0	0	0	0	0	0	0	0	5	0
04:00	0	10	0	0	0	0	0	0	0	0	0	0	0	10	0
05:00	0	39	15	0	1	3	0	0	0	0	0	0	0	58	4
06:00	0	77	30	0	4	0	0	0	1	0	0	0	0	112	5
07:00	1	123	43	1	4	1	0	0	1	0	0	0	0	174	7
08:00	1	196	59	0	9	3	0	1	0	0	0	0	0	269	13
09:00	0	160	61	1	5	0	0	1	0	0	0	0	0	228	7
10:00	0	146	45	1	5	3	0	0	0	0	0	0	0	200	9
11:00	0	166	53	0	9	2	0	2	0	0	0	0	0	232	13
12 PM	2	189	70	0	9	3	0	1	0	0	0	0	0	274	13
13:00	0	196	47	0	10	1	0	0	0	0	0	0	0	254	11
14:00	0	159	51	0	4	2	0	2	0	0	0	0	0	218	8
15:00	2	187	49	0	10	3	0	0	0	0	0	0	0	251	13
16:00	3	213	62	1	12	1	0	0	0	0	0	0	0	292	14
17:00	1	272	67	0	8	0	0	1	0	0	0	0	0	349	9
18:00	1	238	43	1	10	0	0	0	0	0	0	0	0	293	11
19:00	2	174	55	0	4	0	0	1	0	0	0	0	0	236	5
20:00	2	138	38	0	3	0	0	0	0	0	0	0	0	181	3
21:00	0	81	14	0	4	0	0	0	0	0	0	0	0	99	4
22:00	1	59	12	0	2	0	0	0	0	0	0	0	0	74	2
23:00	2	44	8	0	0	1	0	0	0	0	0	0	0	55	1
Total	18	2903	834	5	114	23	0	9	2	0	0	0	0	3908	153
Percent	0.5%	74.3%	21.3%	0.1%	2.9%	0.6%	0.0%	0.2%	0.1%	0.0%	0.0%	0.0%	0.0%		3.9%
AM Peak	07:00	08:00	09:00	07:00	08:00	05:00		11:00	06:00					08:00	08:00
Vol.	1	196	61	1	9	3		2	1					269	13
PM Peak	16:00	17:00	12:00	16:00	16:00	12:00		14:00						17:00	16:00
Vol.	3	272	70	1	12	3		2						349	14

Old Colony Planning Council

70 School Street

Brockton, MA 02301

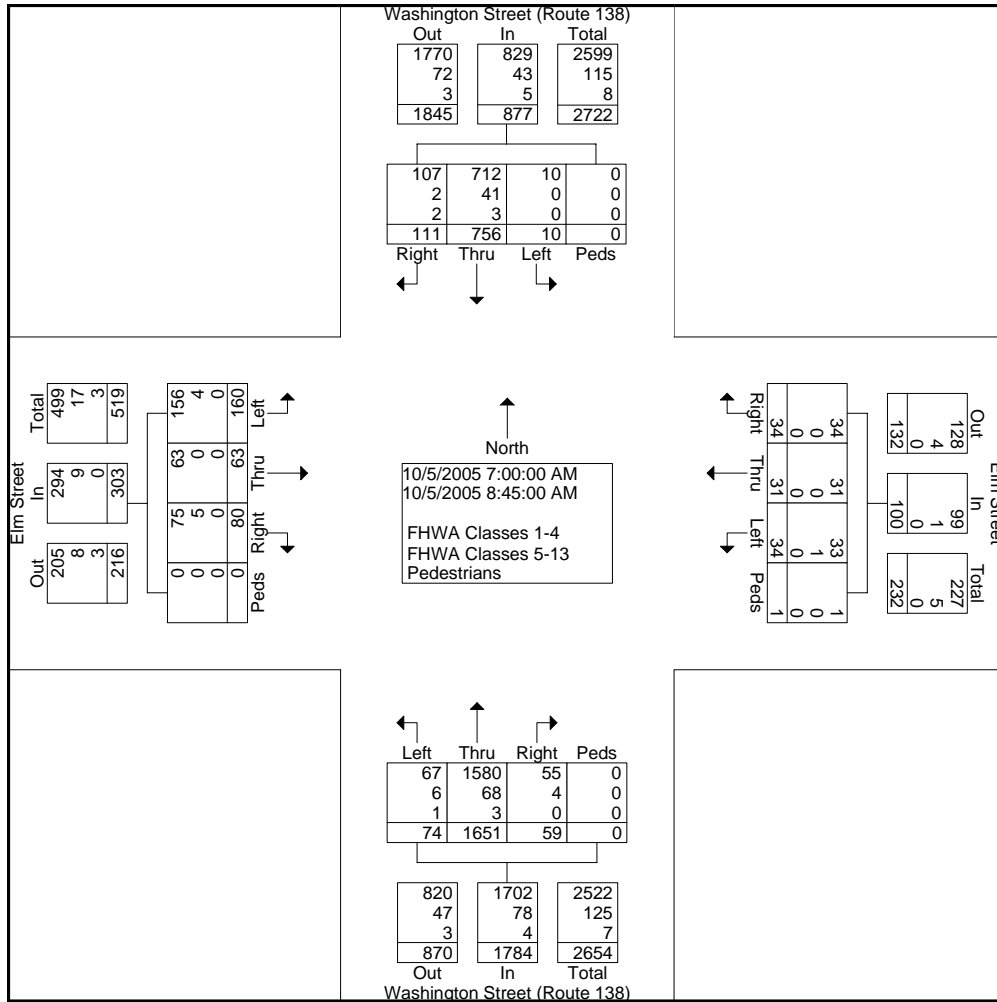
508-583-1833

Community: Easton
 Date: 10/05/2005
 Board #: DB-400 (1)
 Staff: RG

File Name : 88_Washington&Elm_AM
 Site Code : 00000088
 Start Date : 10/5/2005
 Page No : 1

Groups Printed- FHWA Classes 1-4 - FHWA Classes 5-13 - Pedestrians

Start Time	Washington Street (Route 138) Southbound					Elm Street Westbound					Washington Street (Route 138) Northbound					Elm Street Eastbound					Int. Total
	Left	Thru	Right	Peds	App-Total	Left	Thru	Right	Peds	App-Total	Left	Thru	Right	Peds	App-Total	Left	Thru	Right	Peds	App-Total	
Factor	1.0	1.0	1.0	1.0		1.0	1.0	1.0	1.0		1.0	1.0	1.0	1.0		1.0	1.0	1.0	1.0		
07:00 AM	1	89	11	0	101	4	3	3	0	10	3	173	7	0	183	22	9	6	0	37	331
07:15 AM	1	72	15	0	88	5	5	2	0	12	3	237	8	0	248	22	10	8	0	40	388
07:30 AM	0	96	11	0	107	5	1	5	1	12	7	255	4	0	266	26	9	16	0	51	436
07:45 AM	3	93	15	0	111	3	1	5	0	9	13	216	8	0	237	18	9	6	0	33	390
Total	5	350	52	0	407	17	10	15	1	43	26	881	27	0	934	88	37	36	0	161	1545
08:00 AM	1	106	10	0	117	3	5	4	0	12	12	233	5	0	250	27	8	8	0	43	422
08:15 AM	2	92	15	0	109	6	5	3	0	14	16	215	4	0	235	14	7	11	0	32	390
08:30 AM	2	100	17	0	119	3	6	5	0	14	13	149	14	0	176	3	5	8	0	16	325
08:45 AM	0	108	17	0	125	5	5	7	0	17	7	173	9	0	189	28	6	17	0	51	382
Total	5	406	59	0	470	17	21	19	0	57	48	770	32	0	850	72	26	44	0	142	1519
Grand Total	10	756	111	0	877	34	31	34	1	100	74	1651	59	0	1784	160	63	80	0	303	3064
Apprch %	1.1	86.2	12.7	0.0		34.0	31.0	34.0	1.0		4.1	92.5	3.3	0.0		52.8	20.8	26.4	0.0		
Total %	0.3	24.7	3.6	0.0	28.6	1.1	1.0	1.1	0.0	3.3	2.4	53.9	1.9	0.0	58.2	5.2	2.1	2.6	0.0	9.9	



Old Colony Planning Council

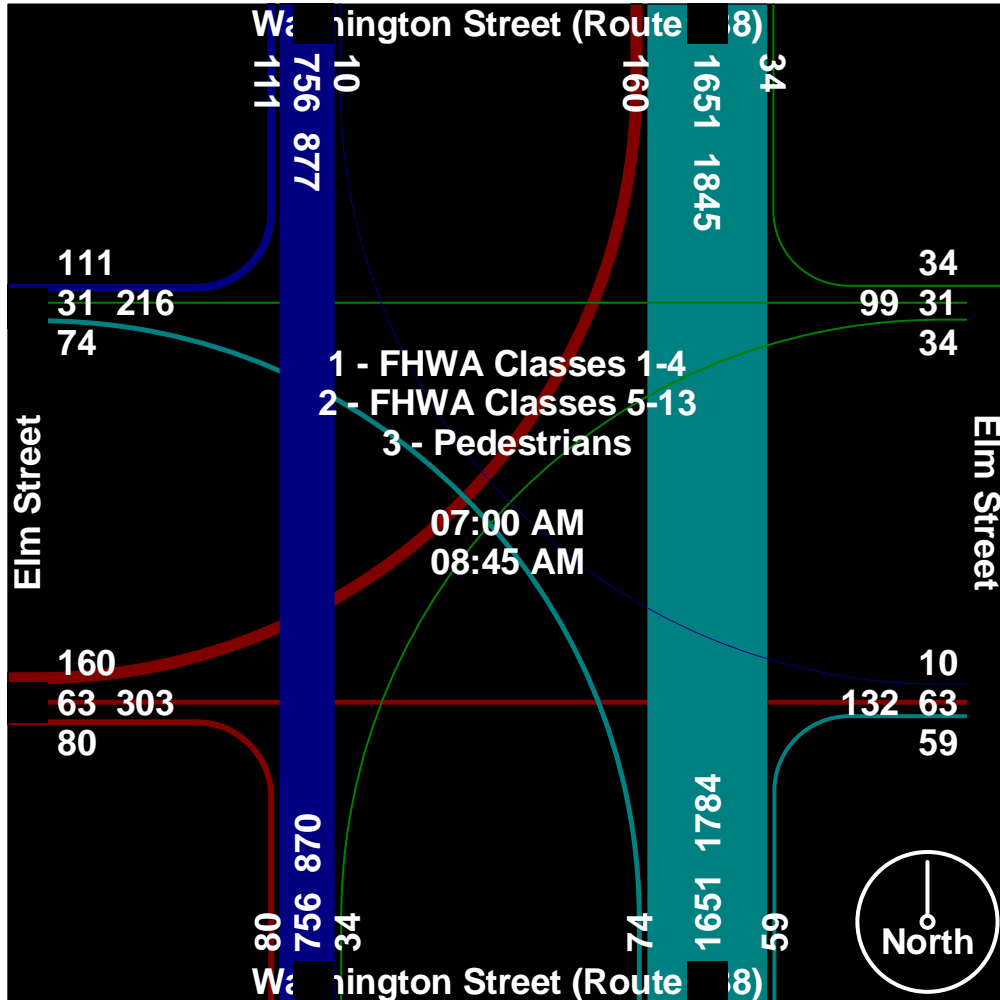
70 School Street

Brockton, MA 02301

508-583-1833

Community: Easton
Date: 10/05/2005
Board #: DB-400 (1)
Staff: RG

File Name : 88_Washington&Elm_AM
Site Code : 00000088
Start Date : 10/5/2005
Page No : 2



Old Colony Planning Council

70 School Street

Brockton, MA 02301

508-583-1833

Community: Easton

Date: 10/05/2005

Board #: DB-400 (1)

Staff: RG

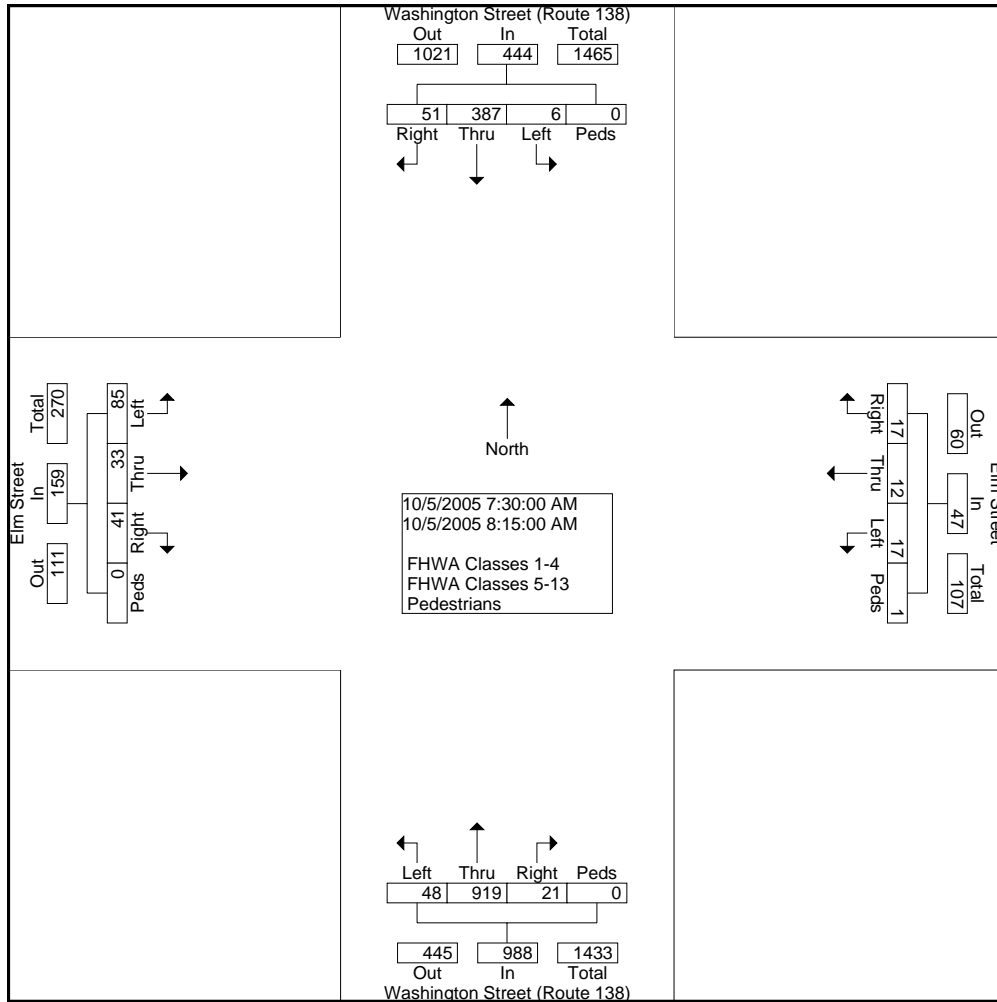
File Name : 88_Washington&Elm_AM

Site Code : 00000088

Start Date : 10/5/2005

Page No : 3

Start Time	Washington Street (Route 138) Southbound					Elm Street Westbound					Washington Street (Route 138) Northbound					Elm Street Eastbound					Int. Total				
	Left	Thru	Right	Peds	App. Total	Left	Thru	Right	Peds	App. Total	Left	Thru	Right	Peds	App. Total	Left	Thru	Right	Peds	App. Total					
Peak Hour From 07:00 AM to 08:45 AM - Peak 1 of 1																									
Intersection	07:30 AM																								
Volume	6	387	51	0	444	17	12	17	1	47	48	919	21	0	988	85	33	41	0	159	1638				
Percent	1.4	87.2	11.5	0.0		36.2	25.5	36.2	2.1		4.9	93.0	2.1	0.0		53.5	20.8	25.8	0.0						
07:30																									
Volume	0	96	11	0	107	5	1	5	1	12	7	255	4	0	266	26	9	16	0	51	436				
Peak Factor																									
High Int.	08:00 AM																								
Volume	1	106	10	0	117	08:15 AM					07:30 AM					07:30 AM					0.939				
Peak Factor	0.949										0.839					0.929					0.779				



Old Colony Planning Council

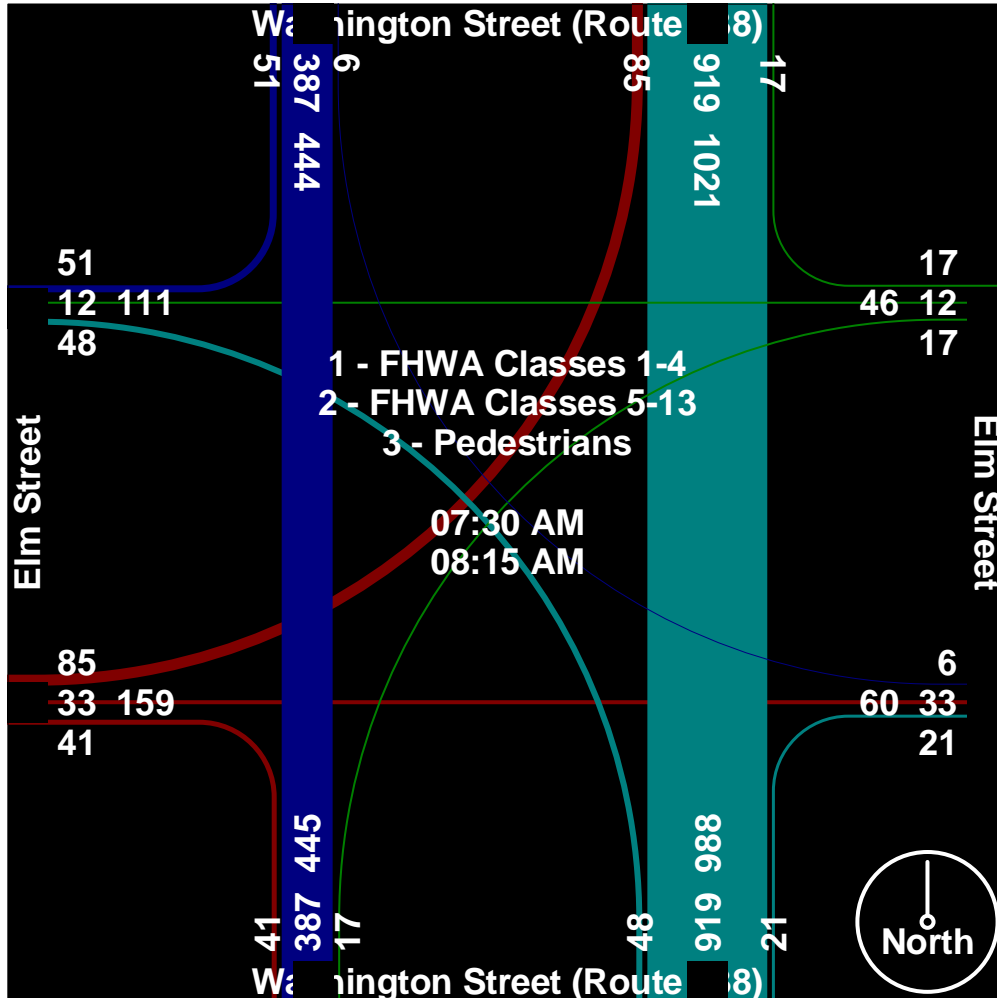
70 School Street

Brockton, MA 02301

508-583-1833

Community: Easton
Date: 10/05/2005
Board #: DB-400 (1)
Staff: RG

File Name : 88_Washington&Elm_AM
Site Code : 00000088
Start Date : 10/5/2005
Page No : 4



Old Colony Planning Council

70 School Street

Brockton, MA 02301

508-583-1833

Community: Easton

Date: 6/7/06

Board #: DB-400 (2)

Staff: EC

File Name : 88_Washington&Elm_PM

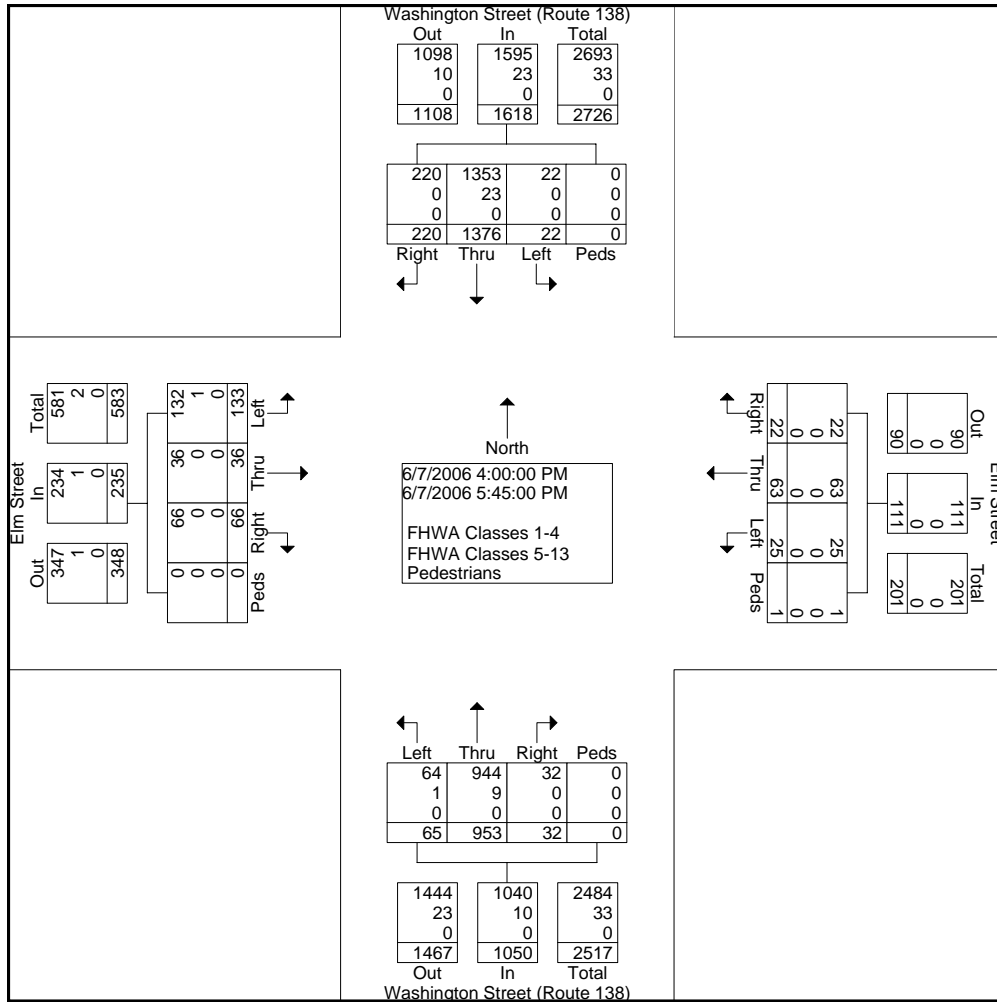
Site Code : 00000088

Start Date : 6/7/2006

Page No : 1

Groups Printed- FHWA Classes 1-4 - FHWA Classes 5-13 - Pedestrians

Start Time	Washington Street (Route 138) Southbound					Elm Street Westbound					Washington Street (Route 138) Northbound					Elm Street Eastbound					Int. Total
	Left	Thru	Right	Peds	App-Total	Left	Thru	Right	Peds	App-Total	Left	Thru	Right	Peds	App-Total	Left	Thru	Right	Peds	App-Total	
Factor	1.0	1.0	1.0	1.0		1.0	1.0	1.0	1.0		1.0	1.0	1.0	1.0		1.0	1.0	1.0	1.0		
04:00 PM	3	163	11	0	177	2	3	4	0	9	7	117	5	0	129	12	3	7	0	22	337
04:15 PM	2	136	26	0	164	5	5	1	0	11	7	100	3	0	110	12	2	1	0	15	300
04:30 PM	2	154	21	0	177	3	8	3	0	14	9	88	5	0	102	23	3	10	0	36	329
04:45 PM	3	195	30	0	228	3	12	2	0	17	2	135	2	0	139	24	4	12	0	40	424
Total	10	648	88	0	746	13	28	10	0	51	25	440	15	0	480	71	12	30	0	113	1390
05:00 PM	3	171	32	0	206	2	9	3	0	14	9	128	4	0	141	12	2	6	0	20	381
05:15 PM	2	176	31	0	209	4	7	2	0	13	9	145	4	0	158	9	10	9	0	28	408
05:30 PM	2	212	31	0	245	3	11	4	0	18	9	123	6	0	138	21	4	9	0	34	435
05:45 PM	5	169	38	0	212	3	8	3	1	15	13	117	3	0	133	20	8	12	0	40	400
Total	12	728	132	0	872	12	35	12	1	60	40	513	17	0	570	62	24	36	0	122	1624
Grand Total	22	1376	220	0	1618	25	63	22	1	111	65	953	32	0	1050	133	36	66	0	235	3014
Apprch %	1.4	85.0	13.6	0.0		22.5	56.8	19.8	0.9		6.2	90.8	3.0	0.0		56.6	15.3	28.1	0.0		
Total %	0.7	45.7	7.3	0.0	53.7	0.8	2.1	0.7	0.0	3.7	2.2	31.6	1.1	0.0	34.8	4.4	1.2	2.2	0.0	7.8	



Old Colony Planning Council

70 School Street

Brockton, MA 02301

508-583-1833

Community: Easton

Date: 6/7/06

Board #: DB-400 (2)

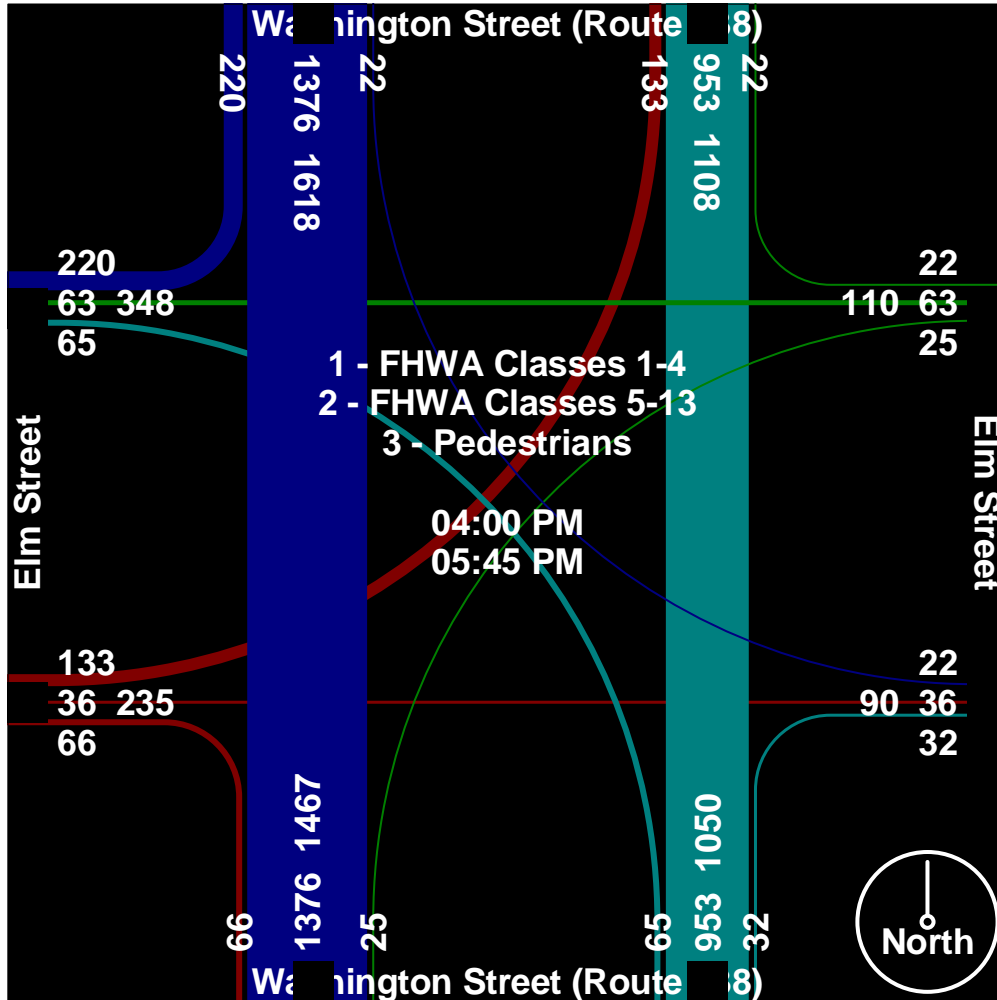
Staff: EC

File Name : 88_Washington&Elm_PM

Site Code : 0000088

Start Date : 6/7/2006

Page No : 2



Old Colony Planning Council

70 School Street

Brockton, MA 02301

508-583-1833

Community: Easton

Date: 6/7/06

Board #: DB-400 (2)

Staff: EC

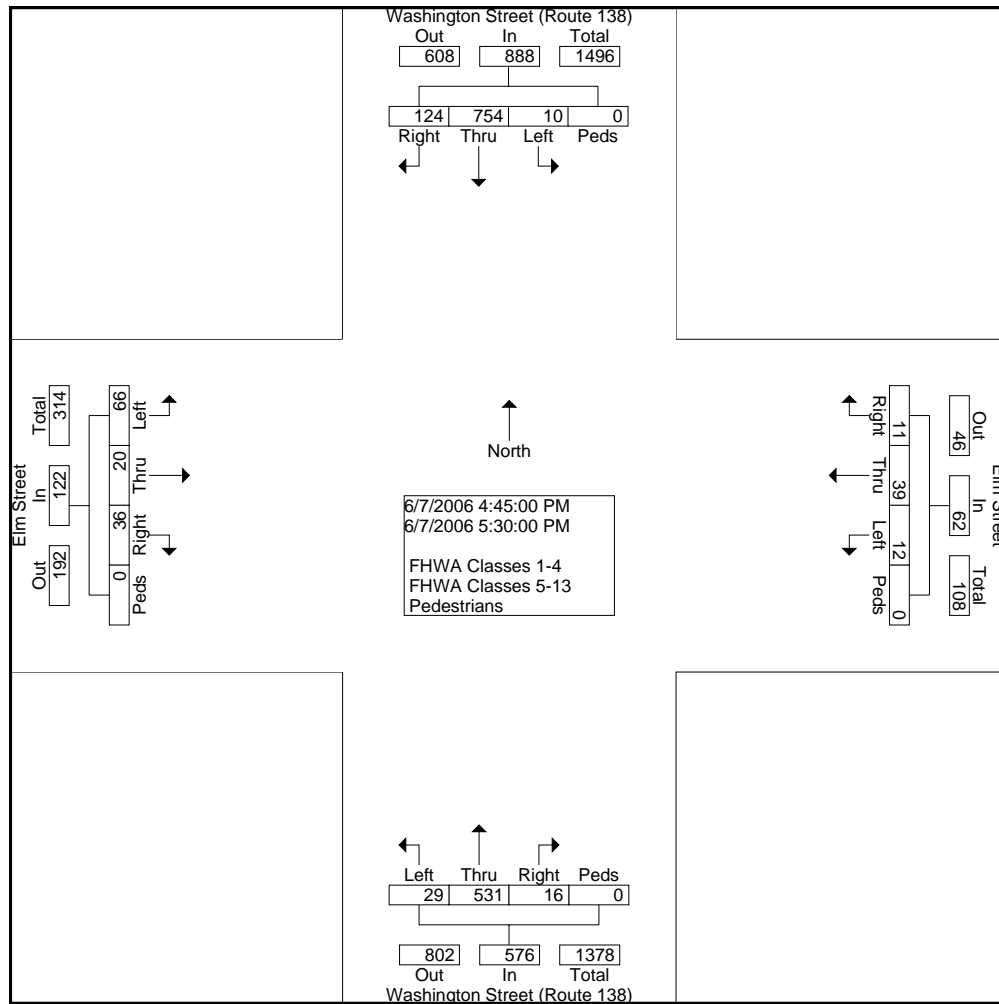
File Name : 88_Washington&Elm_PM

Site Code : 00000088

Start Date : 6/7/2006

Page No : 3

Start Time	Washington Street (Route 138) Southbound					Elm Street Westbound					Washington Street (Route 138) Northbound					Elm Street Eastbound					Int. Total
	Left	Thru	Right	Peds	App. Total	Left	Thru	Right	Peds	App. Total	Left	Thru	Right	Peds	App. Total	Left	Thru	Right	Peds	App. Total	
Peak Hour From 04:00 PM to 05:45 PM - Peak 1 of 1																					
Intersection	04:45 PM																				
Volume	10	754	124	0	888	12	39	11	0	62	29	531	16	0	576	66	20	36	0	122	1648
Percent	1.1	84.9	14.0	0.0		19.4	62.9	17.7	0.0		5.0	92.2	2.8	0.0		54.1	16.4	29.5	0.0		
05:30																					
Volume	2	212	31	0	245	3	11	4	0	18	9	123	6	0	138	21	4	9	0	34	435
Peak Factor																					
High Int.	05:30 PM																				
Volume	2	212	31	0	245	3	11	4	0	18	9	145	4	0	158	24	4	12	0	40	0.947
Peak Factor	0.906					0.861					0.911					0.763					



Old Colony Planning Council

70 School Street

Brockton, MA 02301

508-583-1833

Community: Easton

Date: 6/7/06

Board #: DB-400 (2)

Staff: EC

File Name : 88_Washington&Elm_PM

Site Code : 00000088

Start Date : 6/7/2006

Page No : 4

