

ROAD SAFETY AUDIT

Washington Street (Route 138) at Union Street

Town of Easton

July 13, 2009

Prepared For:
Massachusetts Highway Department



Prepared By:
BETA Group, Inc.

BETA Group, Inc.
Engineers • Scientists • Planners

315 Norwood Park South, Norwood, MA 02062
Lincoln, RI & Rocky Hill, CT
email: BETA@BETA-inc.com

Table of Contents

Project Data	1
Background	2
Project Description	2
Audit Observations	5
Potential Safety Enhancements	5
Summary of Road Safety Audit	10

List of Appendices

Appendix A.	RSA Meeting Agenda
Appendix B.	RSA Audit Team Contact List
Appendix C.	Detailed Crash Data
Appendix D.	Traffic Volume Data

List of Figures

Figure 1.	Locus Map.....	4
	3	

List of Tables

Table 1.	Participating Audit Team Members	1
Table 2.	Estimated Time Frame and Costs Breakdown	6
Table 3.	Potential Safety Enhancement Summary	11

Project Data

A Road Safety Audit for the intersection of Washington Street (Route 138) and Union Street in the Town of Easton was held on July 13, 2009 at the Easton Town Hall. As indicated in Table 1, the audit team consisted of representatives from Federal, State, Regional and Local agencies and included a cross-section of engineering, planning, emergency response and legislative expertise.

Table 1. Participating Audit Team Members

Audit Team Member	Agency/Affiliation
Bonnie Polin	MassHighway – Safety Section
Lisa Schletzbaum	MassHighway – Safety Section
Carrie Lavallee	MassHighway – Project Management
Charles Kilmer	Old Colony Planning Council
Ray Guarino	Old Colony Planning Council
Bill McNulty	Old Colony Planning Council
Kyle Mowatt	Old Colony Planning Council
David Colton	Town Administrator, Town of Easton
Wayne Southworth	DPW Director, Town of Easton
Colleen Corona	Chair, Board of Selectmen, Town of Easton
Alice Savage	Planning Director, Town of Easton
Allen Krajcik	Police Chief, Town of Easton
Thomas Stone	Fire Chief, Town of Easton
Tim White	Federal Highway Administration
Ken Petraglia	BETA Group
Greg Lucas	BETA Group
John Mirabito	BETA Group
Rep. Christine Canavan	Legislature
Rep. David Flynn	Legislature
Benjamin Janelli	Legislature – Rep. Creedon's Office
Bill Travers	MassHighway – District 5 Projects
Edward Feeney	MassHighway – District 5 Traffic
Bob Stathopoulos	MassHighway – Traffic Engineering
Maurice Goulet	DPW Operations Manager, Town of Easton
Joanne Weinstock	Mass EOT - Planning
Dolores Kent	Easton Council on Aging

Please note that there were additional attendees who did not participate in audit activities.

Background

The Federal Highway Administration defines a Road Safety Audit (RSA) as *the formal safety examination* of an existing or future road or intersection by an *independent, multidisciplinary team*. The purpose of an RSA is to *identify potential safety issues and possible opportunities for safety improvements* considering all roadway users. The Old Colony Planning Council (OCPC) requested that MassHighway conduct a Road Safety Audit of three intersections within the Town of Easton, one of which is the intersection of Washington Street (Route 138) and Union Street. The intersection has been identified by OCPC as a high crash location within the Town. As such, an RSA was conducted in order to identify both short and long term safety improvements that can be made at the subject intersection.

Project Description

The intersection of Washington Street (Route 138) and Union Street, shown in Figure 1, is located in the northeast portion of Easton. Washington Street (Route 138) is a state-owned roadway functionally classified as an Urban Minor Arterial. Union Street is a town-owned roadway functionally classified as an Urban Minor Arterial. Washington Street (Route 138) is a significant regional roadway, connecting Easton with neighboring communities Stoughton and Raynham. Route 138 provides access to I-495 to the south and runs parallel to Route 24. As such, Route 138 becomes a preferred alternative route when delays exist on Route 24. Union Street becomes Pleasant Street approximately $\frac{3}{4}$ mile east of Washington Street at the Brockton city line and provides direct access to Route 27, Route 24, the Westgate Mall and downtown Brockton.

The intersection of Washington Street (Route 138) and Union Street is a T-type intersection with Union Street approaching from the east. In the vicinity of the intersection, Washington Street is approximately 40 feet wide, with a single 12 foot lane and 8 foot shoulder on both approaches. Union Street is approximately 24 feet wide, with a single 12 foot lane in each direction with no edge line markings. There are no sidewalks or handicap accessible pedestrian facilities in the vicinity of the intersection, although there is a faded crosswalk on the southern leg of the intersection.



A vehicle exiting Union Street onto Washington Street

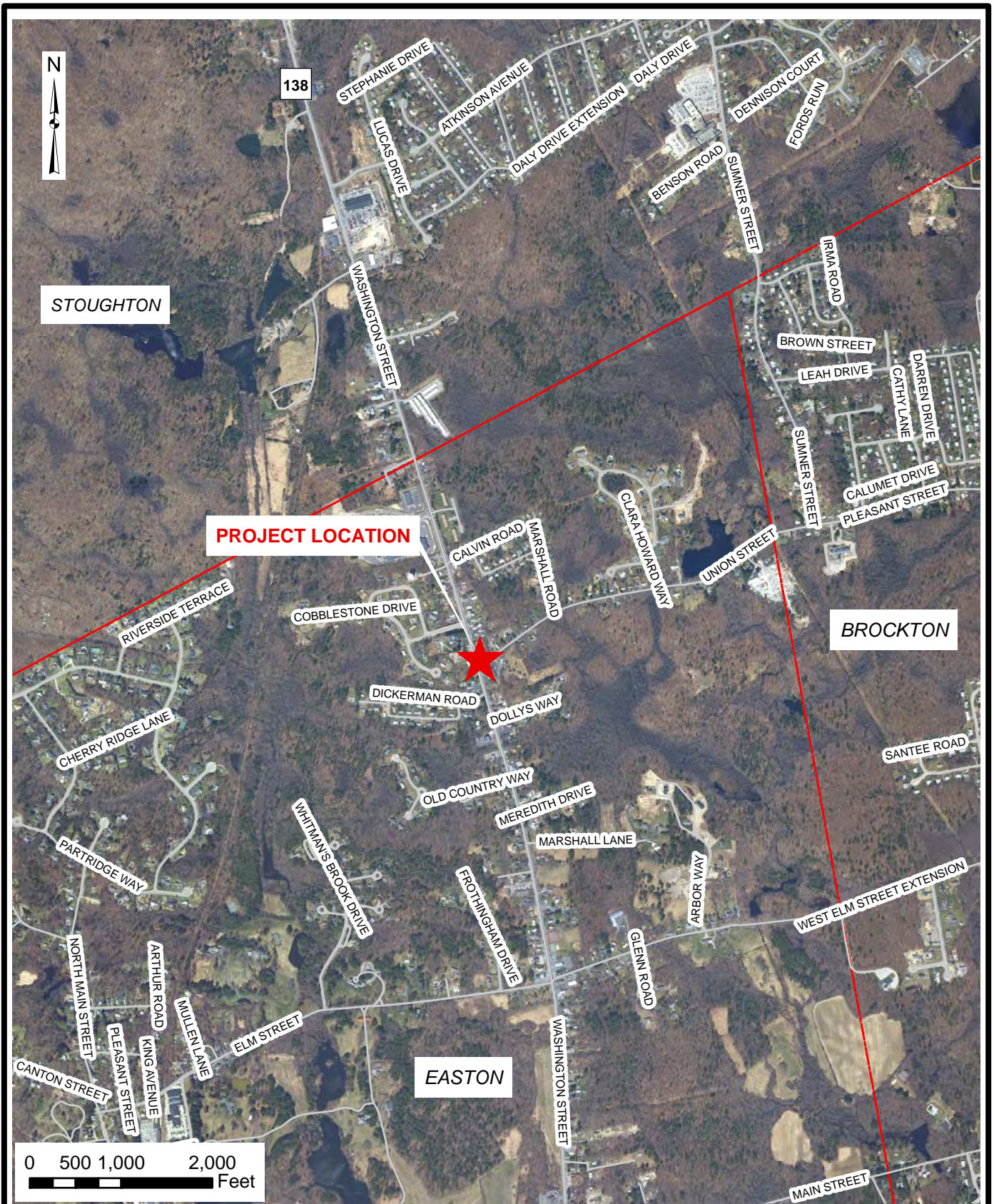
The surrounding area is a mix of commercial and residential use. Several businesses in the area have been converted from former residential properties. There is a pool store on the southeast corner of the

intersection, which has a raised parking area separated from Washington Street by a 3 foot high wall with small shrubs on top.

The posted speed limit on Washington Street is 40 MPH. Speed data for Washington Street provided by OCPC showed an average speed of 42 MPH and an 85th percentile speed of 49 MPH. The 85th percentile speed is defined as the speed at which 85 percent of the traffic is traveling at or below. The posted speed limit on Union Street is 30 MPH. with vehicles on Union Street traveling at an average speed of 36 MPH and an 85th percentile speed of 47 MPH.

Crash data were provided by the Easton Police Department for three years and are included in the Appendix. There were a total of 16 crashes at the intersection within the three year period. The data show a prevalence of angle-type collisions. Seven of the 16 crashes occurred between a vehicle traveling north on Washington Street and a vehicle exiting Union Street, while three occurred between a left turning vehicle from the north and a through vehicle traveling northbound. Ten of the 16 crashes were classified by the Easton Police Department as an instance of a driver failing to yield the right-of-way. Ten of the 16 crashes were injury crashes. OCPC calculated a crash rate of 0.867 crashes per million entering vehicles (MEV) at this intersection as part of their 2007 *Easton State Numbered Routes Study*. This is considerably higher than the District 5 average of 0.58 for unsignalized intersections.

Automatic Traffic Recorder (ATR) counts and Manual Turning Movement (MTM) counts were provided by OCPC. ATR data were recorded in 2005 for both Washington Street and Union Street. Washington Street (Route 138) carries 13,900 vehicles per day (vpd) at the Easton town line, which is approximately ½ mile north of Union Street. Union Street carries 6,500 vpd. MTM data were recorded in 2005 for both the AM and PM peak periods. The AM peak hour occurred from 7:45 to 8:45 AM. During the AM peak hour, there were 47 left turns from Washington Street to Union Street, and 85 left turns from Union Street to Washington Street against 1,075 through vehicles on Washington Street (789 northbound, 286 southbound). During the PM peak hour, there were 85 left turns from Washington Street to Union Street, and 177 left turns from Union Street to Washington Street against 1,311 through vehicles on Washington Street (494 northbound, 817 southbound). The high volume and high speed of travel on Washington Street provide very few acceptable gaps for those turning vehicles. OCPC performed capacity analysis at this intersection as part of their 2007 *Easton State Numbered Routes Study*. The analyses showed that the intersection operates at Level of Service “F” during the morning and afternoon peak hours.



BETA Group, Inc.
 Engineers • Scientists • Planners

315 Norwood Park South
 Norwood, MA 02062
 781.255.1982
 BETA@BETA-inc.com

Washington Street (Route 138)
 At Union Street

ROAD SAFETY AUDIT

EASTON, MA

Figure 1
Location Map

Audit Observations

Following a brief introduction to the RSA process and a summary of traffic volumes and crash information, the audit participants were asked to discuss safety hazards at the intersection of Washington Street (Route 138) and Union Street. Audit participants then conducted a site visit as a group, at which time they offered observations on safety concerns and deficiencies. A summary of those major safety considerations is as follows:

- Sight Distance – This was a concern of many audit participants, specifically for vehicles departing Union Street. Visibility to the north is restricted by a real estate sign and vegetation, as well as by the line of utility poles placed at the edge of pavement. Visibility to the south is also restricted by utility poles, as well as by the concrete retaining wall and shrubs that border the grade separated parking lot for the business on the southeast corner of the intersection. There is also a crest vertical curve on Union Street approaching the intersection which reduces visibility of the intersection for vehicles approaching on Union Street.
- Alignment of Washington Street – Alignment is related to sight distance, but was discussed as a separate topic of concern. There is a crest vertical curve north of Washington Street that reduces awareness of the intersection for vehicles approaching from the north. This crest curve also contributes to sight distance deficiencies for drivers looking to the north when turning left from Union Street to Washington Street southbound.
- Left turning vehicles – This is a multi-faceted safety concern at the intersection. Some audit participants suggested that the lack of left turn lanes creates an operational and safety concern at the intersection. Others stated that the tendency of southbound through vehicles to use the shoulder to pass left turning vehicles on the right creates an additional safety hazard, as a vehicle exiting Union Street may not see or may not anticipate a vehicle making a passing movement on the right.
- Pedestrian accommodations – There is an existing crosswalk just south of the intersection; however, there are no sidewalks, no handicap accessible ramps and no accompanying signage. Several audit participants suggested that pedestrian traffic has increased in the area. The Easton Police Department reported that there was a pedestrian fatality on Washington Street south of Union Street. The presence of a crosswalk may provide a false sense of safety for a pedestrian crossing Washington Street.

Potential Safety Enhancements

After the site visit, audit participants returned to the meeting location to discuss the safety issues and consider improvements. Audit participants were encouraged to consider both short and long term improvements for each issue. Each improvement considered has been categorized as short-term, mid-

term, or long-term based on the definitions shown in Table 2. Additionally, a cost category has been assigned to each improvement based on the parameters set forth in Table 2.

Table 2. Estimated Time Frame and Costs Breakdown

Time Frame		Costs	
Short-term	<1 year	Low	<\$10,000
Mid-term	1–3 years	Medium	\$10,001–\$50,000
Long-term	>3 years	High	>\$50,000

Sight Distance

The following improvements were proposed by audit participants to alleviate sight distance concerns at the intersection of Washington Street (Route 138) and Union Street.

- Sidewalks. This would be a mid-term and high cost improvement. Sidewalks could be constructed along one or both sides of Washington Street. Although sidewalks could be constructed while maintaining the existing roadway width, the greatest benefit to sight distance at the intersection would be realized if sidewalks are constructed in conjunction with roadway narrowing. It should be noted that narrowing the shoulder may provide unintended impedances to traffic signal design, specifically if a dedicated left turn lane is to be provided. Sidewalks would allow increased visibility along Washington Street.



**Existing Sight Distance Obstructions
Looking Northbound**

- Remove vegetation on northeast corner. This would require trimming of trees located on the east side of Washington Street north of Union Street. This is a short term, low cost improvement.
- Remove vegetation on southeast corner. This would require trimming (or removal) of shrubs along the wall bordering the business parking lot on the southeast corner of the intersection. This is a short term, low cost improvement
- Crosswalk landings. It was suggested by an audit participant that ramps could be installed at the ends of the existing crosswalk. This provides no benefit for sight distance, and is not recommended unless done in conjunction with sidewalk construction.
- Remove crest curve on Union Street. The crest curve on Union Street reduces visibility of the intersection for approaching vehicles. It reduces visibility of the stop sign but also reduces visibility of vehicles queued at the intersection and may result in rear end collisions, although it

should be noted that none were recorded in the data provided by the Easton Police Department. Removal of the crest vertical curve is a long-term, high cost improvement.

- Pedestrian Warning Signs. There is one warning sign for the existing crosswalk, located approximately 800 feet to the south. High visibility W11-2 Crosswalk Warning signs should be installed both at the crosswalk and 300 feet in advance of the crosswalk in both directions on Washington Street. The sign at the crosswalk would have a supplemental arrow panel pointing downward towards the crosswalk. This is a short term, low cost improvement.

- Enforce No Parking on shoulder. The wide shoulder along Washington Street provides enough space for vehicles to park; however, Washington Street is state highway and therefore parking is prohibited. This is a low cost improvement that can be implemented immediately by means of enforcement, and in the short-term by adding R8-1a “STATE HIGHWAY – PARKING PROHIBITED” signs.



- Intersection warning signs. The installation of W2-1 intersection warning signs on the Washington Street approaches would increase awareness of the intersection for approaching vehicles. There is an existing intersection warning sign on the southbound approach, but it is damaged and should be replaced. Signs would alert drivers to the potential of encountering turning vehicles. This is a short-term, low cost improvement.



- Raise “double arrow” sign. There is an existing W1-7 Two-Direction Large Arrow sign on Washington Street facing Union Street. The height of this sign should be raised so that it is more visible for vehicles coming over the vertical crest curve on Union Street. According to the Manual on Uniform Traffic Control Devices (MUTCD), this sign “should be visible for a sufficient distance to provide the road user with adequate time to react to the intersection configuration.” This is a short-term, low cost improvement.



- Signalization. The installation of a traffic signal was suggested by several audit participants, and is supported by both OCPC and the Town of Easton. Installation of a traffic signal is a mid-term, high cost improvement. A traffic signal would provide a protected phase for Union Street traffic, reducing the impact of identified sight distance deficiencies.
- Yellow/Red Flashing Beacon. The installation of a flashing beacon would increase visibility of the intersection but would not provide protection for vehicles exiting Union Street. Installation of a flashing beacon is a mid-term, medium cost improvement. It was noted by an audit participant that a flashing beacon could be installed as an interim measure in advance of a traffic signal.

Alignment

Improvements related to alignment will also help alleviate sight distance concerns, but include more specific modifications to roadway geometry. Improvements for left-turning vehicles are included in the discussion of alignment, as they also require modifications to lane geometry. Potential improvements identified by the audit team are as follows:

- **Median on Union Street.** A center median was proposed on Union Street, which would provide several potential safety improvements. It would provide a location for an additional, more visible stop sign on the Union Street approach. It would also provide a physical barrier for vehicles turning left from Washington Street and prevent them from encroaching on the eastbound approach. This is a mid-term, medium cost improvement. Additional issues that must be considered along with the installation of a median are accommodation of truck turns and potential damage during snow removal.
- **Median on Washington Street.** A center median was also proposed on Washington Street north of the intersection, with the intent of reducing pavement width and preventing southbound through vehicles from passing left-turning vehicles. This is a mid-term, medium cost improvement. Additional issues that must be considered along with the installation of a median are accommodation of truck turns and potential damage during snow removal.
- **Rumble Strip.** It was suggested that a rumble strip could be installed along the Washington Street shoulder, which could reduce the use of the shoulder for through vehicles passing left-turning vehicles at the intersection. MassHighway Policy Directive P-04-001 allows rumble strips only on full access control highways and on state roadways with a posted speed greater than 40 MPH in non-residential areas. Therefore, rumble strips would not be allowed on Washington Street in the study area.
- **Flexible posts on Union Street.** This would provide improved definition of the center line on Union Street and would provide a mountable barrier to prevent encroachment from vehicles making a left turn from Washington Street southbound to Union Street. This is a short-term, medium cost improvement.
- **Reduce crest vertical curve on Washington Street.** The crest curve on Washington Street reduces visibility of the intersection for approaching vehicles, and also reduces visibility for vehicles exiting Union Street looking to the north. This improvement would require cutting the crest vertical curve and performing related grading modifications of driveways and roadway edge slopes. This is a long-term, high cost improvement.
- **Add right turn lane on Union Street.** An audit participant suggested that a right turn lane be added on Union Street so that two lanes are clearly defined. Currently, the width is such that right turning vehicles try to create a two lane approach and as a result create an additional sight distance restriction. This would be a low cost, short term improvement. It was decided amongst the audit group that a defined right turn lane would increase capacity but decrease safety at the intersection, as the left-turning and right-turning vehicles would block each other from clearly seeing vehicles approaching on Washington Street.

- Add left turn lane southbound on Washington Street. Providing a left turn lane would separate left-turning vehicles and provide a continuous travel lane for southbound through vehicles. This could be accomplished within the existing pavement width, but would reduce shoulder widths from 8 feet to 2 feet in each direction. It is a low cost, short-term improvement. Although the provision of a continuous through lane would help address the existing issue of vehicles traveling in the shoulder to pass turning vehicles, it would in turn require Union Street vehicles to cross two lanes of traffic to successfully complete a turning maneuver. This could increase the potential for collisions and would further decrease capacity for Union Street. This additional safety issue led several audit participants to suggest that left turn lanes should only be considered in conjunction with signalization.

Pedestrian Safety

Pedestrian safety was discussed as a major safety concern from audit participants, specifically due to the existing crosswalk and the increase in pedestrian activity in the area. Potential improvements related to pedestrian safety are as follows:

- Sidewalks. This would be a mid-term and high cost improvement. Sidewalks could be constructed along one or both sides of Washington Street. This would improve pedestrian safety by providing a defined path for pedestrian travel with a barrier curb protecting pedestrians from vehicle traffic.
- Signalization. The installation of a traffic signal was suggested by several audit participants, and is supported by both OCPC and the Town of Easton. Installation of a traffic signal is a mid-term, high cost improvement. A traffic signal would provide a protected pedestrian phase with pushbutton activation. Sidewalks would need to be constructed in conjunction with a traffic signal if pedestrian facilities are to be included.
- Re-stripe crosswalk. Independent of other pedestrian improvements, the crosswalk should be repainted immediately to increase its visibility to approaching traffic. This is a short-term, low cost improvement.
- Install high visibility pedestrian warning signs. There is one warning sign for the existing crosswalk, located approximately 800 feet to the south. High visibility W11-2 Crosswalk Warning signs should be installed both at the crosswalk and 300 feet in advance of the crosswalk in both directions on Washington Street. The sign at the crosswalk would have a supplemental arrow panel pointing downward towards the crosswalk. This is a short term, low cost improvement.



Existing Crosswalk at Union Street

- ADA compliance. Any proposed pedestrian facilities must be compliant with the Americans With Disabilities Act. This is not a standalone improvement, but must be considered in conjunction with sidewalk and signalization improvements.
- School bus stops. School bus stop locations should be identified by the Town of Easton and studied to determine their impact on safety at the intersection. This is a short-term, low cost improvement.
- In-pavement signs. It was suggested that a sign could be placed on a flexible post at the center of the crosswalk to increase visibility of the crosswalk. This is against MassHighway policy; however, a sign noting that vehicles must yield to pedestrians in the crosswalk could be mounted along with the W11-2 Crosswalk Warning sign and supplemental arrow plaque.
- Yield lines. It was suggested that yield lines should be painted at the crosswalk to improve visibility of the crosswalk for approaching vehicles and to confirm the requirement that vehicles yield to pedestrians in the crosswalk. This is not in compliance with the MUTCD; yield lines cannot be installed on the main street in advance of a crosswalk at an unsignalized location.
- High visibility crosswalk. It was suggested that lights or reflectors could be installed in the pavement to increase visibility of the crosswalk. This could not be constructed on Washington Street because the equipment required is not on MassHighway's Approved Equipment List.



Speed

Although speed was not discussed as a safety issue at the audit, it should be noted that OCPC data showed an 85th percentile speed on Union Street on 47 MPH, which is 17 MPH above the posted speed limit. Speed limit enforcement should be increased on Union Street. This is a low cost, short-term improvement. The cost of additional enforcement in this area would be borne by reduced enforcement in other parts of Easton.

Summary of Road Safety Audit

Table 3 summarizes potential recommendations discussed by the audit team. The recommendations are categorized based on the potential safety payoff, as well as by time frame and cost. The safety payoff is a qualitative judgment of the effectiveness of the potential safety improvements.

Table 3. Potential Safety Enhancement Summary

Safety Issue	Safety Enhancement	Safety Payoff	Time Frame	Cost
Sight Distance, Left-turning Vehicles, Pedestrian Safety	Installation of a fully-actuated traffic signal in conjunction with sidewalks and pedestrian facility upgrades	High	Mid-term	\$800,000
Sight Distance, Left-turning Vehicles	Installation of a fully-actuated traffic signal	High	Mid-term	\$500,000
Sight Distance, Pedestrian Safety	Sidewalks	High	Mid-term	\$300,000
Sight Distance, Pedestrian Safety	Install High Visibility Crosswalk warning signs	Medium	Short-term	\$800
Sight Distance	Remove Vegetation on northeast corner Trim trees along the east side of Washington Street north of Union Street	Medium	Short-term	\$100
Sight Distance	Remove Vegetation on southeast corner Trim or remove shrubs along the east side of Washington Street south of Union Street	Medium	Short-term	\$500
Sight Distance	Install Flashing Beacon	Medium	Mid-term	\$50,000
Sight Distance	Remove crest vertical curve on Union Street	Medium	Long-term	\$250,000
Sight Distance	Install No Parking Signs & Enforce no parking on shoulder on Washington Street	Low	Short-term	\$400
Sight Distance	Install Intersection Warning signs	Medium	Short-term	\$400
Sight Distance	Raise “double arrow” sign	Low	Short-term	\$100
Alignment	Install median on Union Street	Medium	Mid-term	\$100,000
Alignment	Install median on Washington Street	Low	Mid-term	\$100,000
Alignment	Install flexible posts on Union Street	Low	Short-term	\$15,000
Alignment	Reduce crest vertical curve on Washington Street	Medium	Long-term	\$500,000
Alignment	Add right turn lane on Union Street (It is assumed that right turn lane would be installed without widening.)	Low	Short-term	\$5,000

Table 3. Potential Safety Enhancement Summary

Safety Issue	Safety Enhancement	Safety Payoff	Time Frame	Cost
Pedestrian Safety	Re-stripe Crosswalk	Low	Short-term	\$300
Pedestrian Safety	Town would study locations of school bus stops in the vicinity of the intersection. Examine alternatives of stops that impact safety at the intersection.	Low	Short-term	\$0
Pedestrian Safety	Install “State Law: Yield To Pedestrians in Crosswalk” sign in conjunction with Crosswalk warning signs	Medium	Short-term	\$200
Speed	Speed limit enforcement on Union Street	Medium	Short-term	Reduced enforcement elsewhere in Town

Appendix A. RSA Meeting Agenda

Agenda

Road Safety Audit

Easton – Washington Street 2 Intersections
Elm Street and Union Street

Meeting Location: Easton Town Hall, 136 Elm Street
Monday, July 13, 2009
9:00 AM – 12:00 noon

Type of meeting: High Crash Location – Road Safety Audit
Attendees: Invited Participants to Comprise a Multidisciplinary Team
Please bring: Thoughts and Enthusiasm!!

9:00 AM Welcome and Introductions

9:15 AM Review of Site Specific Material

- Crash, Speed & Volume Summaries
- Existing Geometries and Conditions

10:00 AM Visit the Site

- Drive to the intersection of Washington and Elm Street
- As a group, identify areas for improvement
- Drive to the intersection of Washington and Union Street
- As a group, identify areas for improvement

11:15 AM Completion of RSA

- Finalize all areas for improvement
- Discuss potential improvements with pros and cons and record possible countermeasures

12:00 noon Adjourn for the Day – but the RSA has not ended

Instructions for Participants:

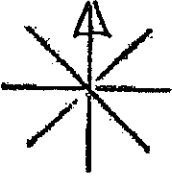
- Before attending the RSA on July 13th, participants are encouraged to drive through the Washington Street/Elm Street and Washington Street/Union Street intersections and complete/consider elements on the RSA Prompt List with a focus on safety.
- All participants will be actively involved in the process throughout. Participants are encouraged to come with thoughts and ideas, but are reminded that the synergy that develops and respect for others' opinions are key elements to the success of the overall RSA process.
- After the RSA meeting, participants will be asked to comment and respond to the document materials to assure it is reflective of the RSA completed by the multidisciplinary team.

Appendix B. RSA Audit Team Contact List

**HIGH CRASH LOCATION ROAD SAFETY AUDIT - ELM ST UNION ST
MONDAY JULY 13, 2009, 9 AM AT EASTON TOWN HALL SIGN UP SHEET**

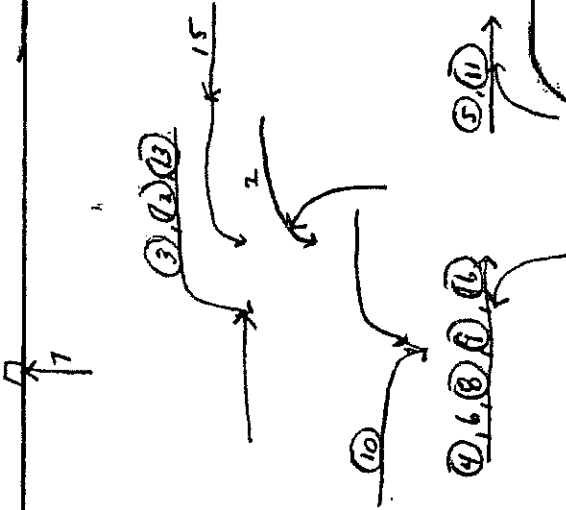
NAME	ORGANIZATION	EMAIL
Carrie Lavallee	MHD- Proj. Management	Carrie.Lavallee@mhd.state.ma.us
WAYNE P. SOUTHWORTH	D.P.W Dir	WSOUTHWORTH@EASTON.MA.US
DAVID A. COLTON	TOWN OF EASTON	dcolton@easton.ma.us
Rep Christine E Caravan	Legislature	
Rep David Flynn	Legislature	
Benjamin Janelli	(Rep. Creedon's office)	Benjamin.Janelli@state.ma.us
Colleen Corona	Chair, B.O.S. Easton	colleencorona@comcast.net
ALLEN KRAJCIK	Police Chief	akrajci@EASTON.MA.US
THOMAS STONE	EASTON FIRE CHIEF	tstone@easton.ma.us
Charles Kitmer	Old Colony Planning Council	ckitmer@ocpcrpa.org
Ken Petraglia	BETA Group, Inc.	kpetraglia@BETA-inc.com
Tim White	FHWA	TIMOTHY.A.White@dot.gov
Jill	BETA	Jill Jill@beta-inc.com
GREG LUCAS	BETA	GREG.LUCAS@BETA-INC.COM
Bill Travers	MHD-D5 Projects	Bill.Travers@mhd.state.ma.us
Dolores Kent	Easton Council on Aging	dkent@easton-ma.us
Ray Guarino	OCPC	r Guarino@ocpcrpa.org
Joe PACIFICO	Rep. Flynn's OFFICE	
Edward G Feehan	MHD D-5	
MAURICE GOULET	EASTON DPW	mgoulet@easton.ma.us
Jeanne Telega Weinstock	EOT	jeanne.weinstock@eot.state.ma.us

Appendix C. Detailed Crash Data



Indicate North
by Arrow

COLLISION DIAGRAM



Name _____

WASHINGTON ST
Name _____

SYMBOLS	TYPES OF COLLISIONS	SHOW FOR EACH ACCIDENT
<ul style="list-style-type: none"> Moving Vehicle Backing Vehicle Non-involved Vehicle Pedestrian Parked Vehicle Fixed Object Fatal Accident Injury Accident 	<ul style="list-style-type: none"> Rear-End Head On Side Swipe Out of Control Left Turn Right Angle 	<ol style="list-style-type: none"> 1. Approximate location of accident 2. Type of collision and vehicles involved. 3. Time, Day, Date 4. Any other pertinent factors mentioned on the report (i.e. presence of oil on road, ruts, etc.)

INTERSECTION WASHINGTON ST and UNION

PERIOD FROM: 1/1/2001 to 12/31/2008

EASTON

A-6

CRASH DATA SUPPLIED BY EASTON PD.

Time Period: 1/1/2006-12/31/2008, 3 years

City: Easton

Location: Washington / Union

Crash #	Date	Time	Light conditions	Weather Conditions	Road surface	Driver Ages	Driver Contributing codes	Max. Injures	Vehicle types (if not pc, light truck)	Notes
1	1/23/2006	8:50	daylight	snow, sleet	snow	18	driving too fast for conditions	PDO		ran off road on Union Street - NOT AT INTERSECTION
2	2/26/2006	18:54	dark-lighted	clear	dry	41, 76	failed to yield ROW	PDO		
3	5/19/2006	11:12	daylight	cloudy, rain	wet	41, 76	failed to yield ROW	non-incapacitating	motorcycle	
4	7/12/2006	8:47	daylight	cloudy	dry	35, 59	failed to yield ROW	incapacitating		
5	10/20/2006	8:46	daylight	cloudy, rain	wet	39, 45	failed to yield ROW	possible		
6	11/19/2006	16:23	dusk	cloudy	dry	21, 34	failed to yield ROW	PDO		did not see stop sign and ran off road directly across street into 75 Washington
7	11/23/2006	18:24	dark-lighted	rain	wet	25	??	PDO		
8	3/22/2007	15:50	daylight	cloudy	dry	74, 44	failed to yield ROW	possible		
9	3/27/2007	7:38	daylight	clear	dry	33, 52	failed to yield ROW	non-incapacitating		
10	7/14/2007	16:39	daylight	clear	dry	30, 45	failed to yield ROW	non-incapacitating		
11	10/11/2007	9:55	daylight	cloudy, rain	wet	68, 59, 30	disregarded signs, markings	incapacitating		
12	11/14/2007	15:42	daylight	cloudy	dry	16, 55		non-incapacitating		
13	3/7/2008	13:17	daylight	clear	dry	56, 63	failed to yield ROW	incapacitating		
14	7/9/2008	13:16	daylight	clear	dry	47, 85	??	PDO		coming out of parking lot at #77 not at intersection
15	10/7/2008	8:51	daylight	clear	dry	44, 52	followed too closely, defective equipment	PDO		known brake problem
16	10/15/2008	9:22	daylight	clear	dry	64, 46	failed to yield ROW	possible		

Source: Easton Police Department 7-16-09

PDO 6
injury 10
EPDO 56

Time Period: 1/1/2006-12/31/2008, 3 years

City: Easton

Location: Washington between Union and Elm Streets

Crash #	Date	Time	Light conditions	Weather Conditions	Road surface	Driver Ages	Driver Contributing codes	Max. injuries	Vehicle types (if not pc, light truck)	Notes	Address
1	7/12/2008	4:49	dawn	clear	dry	32	operating erratic, reckless, car	PDO	non-motorist	fatal crash striking pedestrian coming out of driveway at #77 Washington St	140 Washington St
2	7/9/2008	13:18	daylight	clear	dry	47, 65	???	PDO		at #105 Washington	
3	8/29/2008	12:32	daylight	clear	dry	85, 23	???	PDO		in parking lot of Tectschis and Fresh Catch, not on Washington Street	
4	3/5/2008	12:30	daylight	clear	dry	79		PDO		ran off road at #78 Washington st	
5	1/4/2008	10:07	daylight	snow	ice	44		PDO		attempting U-turn	#181 Washington
6	11/24/2007	12:10	daylight	clear	dry	80, 41		possible injury	non-motorist	struck bicyclist while exiting #181 Washington St	
7	10/11/2007	17:23	daylight	cloudy, rain	wet	65		PDO		at Dolly's Way intersection	
8	3/18/2007	18:20	dark-lighted	snow	snow	24	driving too fast for conditions	PDO			#181 Washington
9	3/8/2007	15:26	daylight	clear	dry	75, 38	failed to yield ROW	PDO			#118 Washington St
10	2/22/2007	17:39	dark-lighted	cloudy, rain	wet	18, 40	???	PDO		crossed median	#181 Washington
11	2/22/2007	13:57	daylight	cloudy, rain	dry	67, 70	???	PDO			at Meredith Road
12	10/20/2006	16:41	daylight	cloudy, rain	wet	74	failed to yield ROW	possible			south of Stonemoor Avenue
13	10/19/2006	23:57	dark-lighted	clear	dry	40, 23	followed too closely	PDO			at Meredith Road
14	1/4/2006	17:10	dark-lighted	cloudy, rain	dry	51, 46	failed to yield ROW	PDO	non-incapacitating injury		#181 Washington
15	11/30/2007	14:48	daylight	clear	dry	28, 16	failed to yield ROW	incapacitating injury			#181 Washington

Source: provided by Easton Police Department 7-16-09

Appendix D. Traffic Volume Data

Old Colony Planning Council
 70 School Street
 Brockton, MA 02301
 508-583-1833

Community: Stoughton
 Community#_FC: 285_U5
 Recorder #: Jamar #8
 Tube Layout: L6 Basic

Station ID:
 Site Code: 285
 Date Start: 14-Jun-05
 Date End: 16-Jun-05
 Washington St, at the Easton T/L

Start Time	13-Jun-05		Tue		Wed		Thu		Fri		Sat		Sun		Week Average	
	NB	SB	NB	SB	NB	SB	NB	SB	NB	SB	NB	SB	NB	SB	NB	SB
12:00 AM	*	*	*	*	27	38	38	53	*	*	*	*	*	*	32	46
01:00	*	*	*	*	23	22	28	26	*	*	*	*	*	*	26	24
02:00	*	*	*	*	11	9	19	10	*	*	*	*	*	*	15	10
03:00	*	*	*	*	13	9	9	11	*	*	*	*	*	*	11	10
04:00	*	*	*	*	29	18	30	25	*	*	*	*	*	*	30	22
05:00	*	*	*	*	137	66	146	67	*	*	*	*	*	*	142	66
06:00	*	*	*	*	532	180	551	174	*	*	*	*	*	*	542	177
07:00	*	*	*	*	758	325	776	369	*	*	*	*	*	*	767	347
08:00	*	*	*	*	656	417	665	404	*	*	*	*	*	*	660	410
09:00	*	*	*	*	423	319	393	337	*	*	*	*	*	*	408	328
10:00	*	*	*	*	323	323	326	312	*	*	*	*	*	*	324	318
11:00	*	*	*	*	392	354	387	362	*	*	*	*	*	*	390	358
12:00 PM	*	*	341	335	361	394	*	*	*	*	*	*	*	*	351	364
01:00	*	*	361	394	412	399	*	*	*	*	*	*	*	*	386	396
02:00	*	*	372	423	419	455	*	*	*	*	*	*	*	*	396	439
03:00	*	*	467	616	457	604	*	*	*	*	*	*	*	*	462	610
04:00	*	*	436	668	456	690	*	*	*	*	*	*	*	*	446	679
05:00	*	*	470	772	502	749	*	*	*	*	*	*	*	*	486	760
06:00	*	*	350	599	370	597	*	*	*	*	*	*	*	*	360	598
07:00	*	*	288	360	303	402	*	*	*	*	*	*	*	*	296	381
08:00	*	*	179	217	238	276	*	*	*	*	*	*	*	*	208	246
09:00	*	*	158	168	155	184	*	*	*	*	*	*	*	*	156	176
10:00	*	*	114	110	121	135	*	*	*	*	*	*	*	*	118	122
11:00	*	*	54	77	61	95	*	*	*	*	*	*	*	*	58	86
Lane Day	0	0	3590	4739	7179	7060	3368	2150	0	0	0	0	0	0	7070	6973
AM Peak Vol.			8329		14239		5518		0	0	0	0	0	0	14043	
PM Peak Vol.				17:00	17:00	17:00	17:00								17:00	17:00
			470	772	502	749								486	760	

Comb. Total 0 8329 14239 5518 0 0 0 14043

ADT Not Calculated

Old Colony Planning Council
 70 School Street
 Brockton, MA 02301
 508-583-1833

Community: Stoughton
 Community#_FC: 285_U5
 Recorder #: Jamar #8
 Tube Layout: L6 Basic

Station ID:
 Site Code: 285
 Date Start: 14-Jun-05
 Date End: 16-Jun-05

Washington St, at the Easton T/L

Start Time	13-Jun-05 Mon	14-Jun-05 Tue	15-Jun-05 Wed	16-Jun-05 Thu	17-Jun-05 Fri	18-Jun-05 Sat	19-Jun-05 Sun	Week Average
12:00 AM	*	*	65	91	*	*	*	78
01:00	*	*	45	54	*	*	*	50
02:00	*	*	20	29	*	*	*	24
03:00	*	*	22	20	*	*	*	21
04:00	*	*	47	55	*	*	*	51
05:00	*	*	203	213	*	*	*	208
06:00	*	*	712	725	*	*	*	718
07:00	*	*	1083	1145	*	*	*	1114
08:00	*	*	1073	1069	*	*	*	1071
09:00	*	*	742	730	*	*	*	736
10:00	*	*	646	638	*	*	*	642
11:00	*	*	746	749	*	*	*	748
12:00 PM	*	676	755	*	*	*	*	716
01:00	*	755	811	*	*	*	*	783
02:00	*	795	874	*	*	*	*	834
03:00	*	1083	1061	*	*	*	*	1072
04:00	*	1104	1146	*	*	*	*	1125
05:00	*	1242	1251	*	*	*	*	1246
06:00	*	949	967	*	*	*	*	958
07:00	*	648	705	*	*	*	*	676
08:00	*	396	514	*	*	*	*	455
09:00	*	326	339	*	*	*	*	332
10:00	*	224	256	*	*	*	*	240
11:00	*	131	156	*	*	*	*	144
Total	0	8329	14239	5518	0	0	0	14042
Percentage	0.0%	59.3%	101.4%	39.3%	0.0%	0.0%	0.0%	
AM Peak Vol.			07:00 1083	07:00 1145				07:00 1114
PM Peak Vol.		17:00 1242	17:00 1251					17:00 1246

Old Colony Planning Council
 70 School Street
 Brockton, MA 02301
 508-583-1833

Community: Stoughton
 Community#_FC: 285_U5
 Recorder #: Jamar #8
 Tube Layout: L6 Basic
 NB

Station ID:
 Site Code: 285
 Date Start: 14-Jun-05
 Date End: 16-Jun-05

Washington St, at the Easton T/L

Start Time	1 15	16 20	21 25	26 30	31 35	36 40	41 45	46 50	51 55	56 60	61 65	66 70	71 75	76 999	Total
06/14/05	*	*	*	*	*	*	*	*	*	*	*	*	*	*	*
01:00	*	*	*	*	*	*	*	*	*	*	*	*	*	*	*
02:00	*	*	*	*	*	*	*	*	*	*	*	*	*	*	*
03:00	*	*	*	*	*	*	*	*	*	*	*	*	*	*	*
04:00	*	*	*	*	*	*	*	*	*	*	*	*	*	*	*
05:00	*	*	*	*	*	*	*	*	*	*	*	*	*	*	*
06:00	*	*	*	*	*	*	*	*	*	*	*	*	*	*	*
07:00	*	*	*	*	*	*	*	*	*	*	*	*	*	*	*
08:00	*	*	*	*	*	*	*	*	*	*	*	*	*	*	*
09:00	*	*	*	*	*	*	*	*	*	*	*	*	*	*	*
10:00	*	*	*	*	*	*	*	*	*	*	*	*	*	*	*
11:00	*	*	*	*	*	*	*	*	*	*	*	*	*	*	*
12 PM	19	2	9	8	34	59	108	77	23	2	0	0	0	0	341
13:00	7	4	4	6	18	72	138	93	16	3	0	0	0	0	361
14:00	11	1	4	4	16	79	141	99	15	1	0	1	0	0	372
15:00	22	3	5	20	37	122	171	70	12	4	1	0	0	0	467
16:00	25	5	2	5	31	76	189	86	14	1	2	0	0	0	436
17:00	29	4	2	1	14	109	189	91	27	2	1	1	0	0	470
18:00	16	5	3	5	30	64	135	70	17	4	1	0	0	0	350
19:00	11	6	2	2	11	52	109	66	25	3	0	0	1	0	288
20:00	5	4	1	2	11	31	67	46	11	1	0	0	0	0	179
21:00	0	0	1	0	8	32	74	34	9	0	0	0	0	0	158
22:00	2	0	0	1	4	14	50	33	10	0	0	0	0	0	114
23:00	1	0	0	1	4	7	9	22	9	1	0	0	0	0	54
Total	148	34	33	55	218	717	1380	787	188	22	5	2	1	0	3590

Old Colony Planning Council
 70 School Street
 Brockton, MA 02301
 508-583-1833

Community: Stoughton
 Community#_FC: 285_U5
 Recorder #: Jamar #8
 Tube Layout: L6 Basic
 NB

Station ID:
 Site Code: 285
 Date Start: 14-Jun-05
 Date End: 16-Jun-05

Washington St, at the Easton T/L

Start Time	1 15	16 20	21 25	26 30	31 35	36 40	41 45	46 50	51 55	56 60	61 65	66 70	71 75	76 999	Total
06/15/05	0	0	0	1	0	3	6	11	3	3	0	0	0	0	27
01:00	0	0	0	0	0	5	8	8	2	0	0	0	0	0	23
02:00	0	0	0	0	0	0	4	2	4	0	1	0	0	0	11
03:00	0	0	0	0	0	1	1	2	8	1	0	0	0	0	13
04:00	0	0	0	0	1	1	5	15	3	4	0	0	0	0	29
05:00	0	0	0	0	0	7	33	44	44	7	2	0	0	0	137
06:00	9	0	1	2	8	34	157	205	100	13	2	0	0	1	532
07:00	18	1	5	26	33	96	263	246	65	4	1	0	0	0	758
08:00	28	5	6	3	48	147	215	155	43	4	2	0	0	0	656
09:00	16	0	3	6	13	92	170	96	23	2	2	0	0	0	423
10:00	5	7	4	0	19	54	119	91	19	3	2	0	0	0	323
11:00	18	4	3	1	20	91	155	75	24	1	0	0	0	0	392
12 PM	18	1	2	1	18	72	157	69	23	0	0	0	0	0	361
13:00	14	2	4	4	25	101	135	107	15	5	0	0	0	0	412
14:00	20	3	4	5	16	81	179	92	16	3	0	0	0	0	419
15:00	24	2	2	7	34	95	165	95	28	3	2	0	0	0	457
16:00	22	3	4	2	15	104	189	94	21	2	0	0	0	0	456
17:00	46	3	3	5	31	141	169	81	19	3	0	0	1	0	502
18:00	15	5	3	0	12	71	140	88	33	3	0	0	0	0	370
19:00	12	0	2	0	9	46	109	98	25	2	0	0	0	0	303
20:00	7	8	0	1	14	48	104	48	6	1	1	0	0	0	238
21:00	4	0	2	2	9	39	61	28	8	2	0	0	0	0	155
22:00	1	0	0	1	6	14	44	39	14	2	0	0	0	0	121
23:00	0	0	0	0	3	3	23	20	6	5	0	0	0	1	61
Total	277	44	48	67	334	1346	2611	1809	552	73	15	0	1	2	7179

Community: Stoughton
 Community#_FC: 285_U5
 Recorder #: Jamar #8
 Tube Layout: L6 Basic
 NB

Station ID:
 Site Code: 285
 Date Start: 14-Jun-05
 Date End: 16-Jun-05

Washington St, at the Easton T/L

Start Time	1 15	16 20	21 25	26 30	31 35	36 40	41 45	46 50	51 55	56 60	61 65	66 70	71 75	76 999	Total
06/16/05	0	0	0	0	3	7	14	8	5	1	0	0	0	0	38
01:00	0	0	0	0	0	7	9	8	3	0	1	0	0	0	28
02:00	0	0	0	0	0	2	8	6	3	0	0	0	0	0	19
03:00	0	0	0	0	0	2	2	3	1	0	1	0	0	0	9
04:00	0	0	0	0	0	1	4	13	7	5	0	0	0	0	30
05:00	1	0	0	0	0	5	19	53	51	15	2	0	0	0	146
06:00	6	0	0	3	6	27	161	229	101	13	4	1	0	0	551
07:00	32	3	0	13	27	100	251	253	88	8	1	0	0	0	776
08:00	27	2	1	14	31	109	242	195	38	4	1	1	0	0	665
09:00	17	2	1	1	12	66	143	120	27	2	2	0	0	0	393
10:00	11	2	3	4	11	45	109	115	24	2	0	0	0	0	326
11:00	10	4	3	2	21	84	164	81	17	1	0	0	0	0	387
12 PM	*	*	*	*	*	*	*	*	*	*	*	*	*	*	*
13:00	*	*	*	*	*	*	*	*	*	*	*	*	*	*	*
14:00	*	*	*	*	*	*	*	*	*	*	*	*	*	*	*
15:00	*	*	*	*	*	*	*	*	*	*	*	*	*	*	*
16:00	*	*	*	*	*	*	*	*	*	*	*	*	*	*	*
17:00	*	*	*	*	*	*	*	*	*	*	*	*	*	*	*
18:00	*	*	*	*	*	*	*	*	*	*	*	*	*	*	*
19:00	*	*	*	*	*	*	*	*	*	*	*	*	*	*	*
20:00	*	*	*	*	*	*	*	*	*	*	*	*	*	*	*
21:00	*	*	*	*	*	*	*	*	*	*	*	*	*	*	*
22:00	*	*	*	*	*	*	*	*	*	*	*	*	*	*	*
23:00	*	*	*	*	*	*	*	*	*	*	*	*	*	*	*
Total	104	13	8	37	111	455	1126	1084	365	51	12	2	0	0	3368
Grand Total	529	91	89	159	663	2518	5117	3680	1105	146	32	4	2	2	14137

15th Percentile : 37 MPH
 50th Percentile : 43 MPH
 85th Percentile : 49 MPH
 95th Percentile : 53 MPH

Stats
 Mean Speed(Average) : 42 MPH
 10 MPH Pace Speed : 41-50 MPH
 Number in Pace : 8797
 Percent in Pace : 62.2%
 Number of Vehicles > 45 MPH : 4971
 Percent of Vehicles > 45 MPH : 35.2%

Old Colony Planning Council
 70 School Street
 Brockton, MA 02301
 508-583-1833

Community: Stoughton
 Community#_FC: 285_U5
 Recorder #: Jamar #8
 Tube Layout: L6 Basic
 SB

Station ID:
 Site Code: 285
 Date Start: 14-Jun-05
 Date End: 16-Jun-05

Washington St, at the Easton T/L

Start Time	1 15	16 20	21 25	26 30	31 35	36 40	41 45	46 50	51 55	56 60	61 65	66 70	71 75	76 999	Total
06/14/05	*	*	*	*	*	*	*	*	*	*	*	*	*	*	*
01:00	*	*	*	*	*	*	*	*	*	*	*	*	*	*	*
02:00	*	*	*	*	*	*	*	*	*	*	*	*	*	*	*
03:00	*	*	*	*	*	*	*	*	*	*	*	*	*	*	*
04:00	*	*	*	*	*	*	*	*	*	*	*	*	*	*	*
05:00	*	*	*	*	*	*	*	*	*	*	*	*	*	*	*
06:00	*	*	*	*	*	*	*	*	*	*	*	*	*	*	*
07:00	*	*	*	*	*	*	*	*	*	*	*	*	*	*	*
08:00	*	*	*	*	*	*	*	*	*	*	*	*	*	*	*
09:00	*	*	*	*	*	*	*	*	*	*	*	*	*	*	*
10:00	*	*	*	*	*	*	*	*	*	*	*	*	*	*	*
11:00	*	*	*	*	*	*	*	*	*	*	*	*	*	*	*
12 PM	11	3	5	5	16	45	136	90	18	6	0	0	0	0	335
13:00	19	4	2	1	11	58	136	131	29	3	0	0	0	0	394
14:00	14	2	6	3	14	65	167	129	22	1	0	0	0	0	423
15:00	33	5	6	16	35	103	250	142	23	2	0	1	0	0	616
16:00	35	0	6	7	17	118	296	158	29	0	1	1	0	0	668
17:00	40	7	8	7	37	143	329	176	23	2	0	0	0	0	772
18:00	28	2	6	6	27	86	240	157	43	3	1	0	0	0	599
19:00	8	3	5	2	5	60	156	95	22	3	0	0	1	0	360
20:00	7	0	1	0	5	24	77	76	25	2	0	0	0	0	217
21:00	3	0	0	2	7	25	70	47	14	0	0	0	0	0	168
22:00	2	0	1	0	2	27	30	37	10	1	0	0	0	0	110
23:00	1	0	0	0	1	16	31	20	6	2	0	0	0	0	77
Total	201	26	46	49	177	770	1918	1258	264	25	2	2	1	0	4739

Old Colony Planning Council
 70 School Street
 Brockton, MA 02301
 508-583-1833

Community: Stoughton
 Community#_FC: 285_U5
 Recorder #: Jamar #8
 Tube Layout: L6 Basic
 SB

Station ID:
 Site Code: 285
 Date Start: 14-Jun-05
 Date End: 16-Jun-05

Start Time	Washington St, at the Easton T/L															Total
	1 15	16 20	21 25	26 30	31 35	36 40	41 45	46 50	51 55	56 60	61 65	66 70	71 75	76 999		
06/15/05	0	0	0	0	0	8	14	12	4	0	0	0	0	0	38	
01:00	0	0	0	0	1	5	8	5	1	2	0	0	0	0	22	
02:00	0	0	1	0	0	2	3	1	2	0	0	0	0	0	9	
03:00	0	0	0	0	1	1	6	0	1	0	0	0	0	0	9	
04:00	0	0	0	0	0	2	6	6	4	0	0	0	0	0	18	
05:00	0	0	0	0	0	6	9	29	16	4	2	0	0	0	66	
06:00	9	0	0	0	8	16	49	75	20	3	0	0	0	0	180	
07:00	18	6	5	2	11	44	113	94	28	4	0	0	0	0	325	
08:00	31	6	2	7	19	76	143	100	33	0	0	0	0	0	417	
09:00	14	3	2	1	12	35	149	84	17	1	1	0	0	0	319	
10:00	9	2	1	0	6	48	126	97	30	4	0	0	0	0	323	
11:00	16	2	7	2	12	44	123	119	28	1	0	0	0	0	354	
12 PM	13	1	8	11	24	64	146	87	36	4	0	0	0	0	394	
13:00	18	1	3	3	13	55	150	119	30	6	0	1	0	0	399	
14:00	29	0	5	5	6	88	188	109	23	1	0	1	0	0	455	
15:00	22	3	3	5	13	97	226	188	46	1	0	0	0	0	604	
16:00	33	2	5	3	27	122	224	213	55	4	2	0	0	0	690	
17:00	46	14	24	5	34	151	299	150	24	0	1	0	0	1	749	
18:00	18	1	10	4	23	126	238	137	40	0	0	0	0	0	597	
19:00	10	1	4	0	1	31	171	147	32	4	1	0	0	0	402	
20:00	5	0	0	5	8	49	108	72	24	5	0	0	0	0	276	
21:00	5	0	0	4	11	47	75	30	11	1	0	0	0	0	184	
22:00	2	0	0	1	1	17	60	39	14	1	0	0	0	0	135	
23:00	1	0	0	0	0	7	17	38	27	4	1	0	0	0	95	
Total	299	42	80	58	231	1141	2651	1951	546	50	8	2	0	1	7060	

Community: Stoughton
 Community#_FC: 285_U5
 Recorder #: Jamar #8
 Tube Layout: L6 Basic
 SB

Station ID:
 Site Code: 285
 Date Start: 14-Jun-05
 Date End: 16-Jun-05

Washington St, at the Easton T/L

Start Time	15	20	25	30	35	40	45	50	55	60	65	70	75	999	Total
06/16/05	0	0	0	0	2	7	16	16	10	2	0	0	0	0	53
01:00	0	0	0	0	1	2	14	3	3	1	0	0	2	0	26
02:00	0	0	0	1	0	1	4	3	1	0	0	0	0	0	10
03:00	0	0	0	0	0	1	4	6	0	0	0	0	0	0	11
04:00	0	0	1	0	0	3	11	4	4	1	1	0	0	0	25
05:00	0	0	0	0	3	8	12	25	17	2	0	0	0	0	67
06:00	11	1	0	2	5	5	62	70	13	4	1	0	0	0	174
07:00	36	1	5	2	7	36	134	123	22	2	1	0	0	0	369
08:00	34	2	3	2	6	52	153	123	24	2	1	1	1	0	404
09:00	13	1	4	0	17	58	140	77	22	5	0	0	0	0	337
10:00	15	2	3	3	14	38	104	99	32	0	1	1	0	0	312
11:00	9	1	1	1	10	39	143	123	31	3	0	1	0	0	362
12 PM	*	*	*	*	*	*	*	*	*	*	*	*	*	*	*
13:00	*	*	*	*	*	*	*	*	*	*	*	*	*	*	*
14:00	*	*	*	*	*	*	*	*	*	*	*	*	*	*	*
15:00	*	*	*	*	*	*	*	*	*	*	*	*	*	*	*
16:00	*	*	*	*	*	*	*	*	*	*	*	*	*	*	*
17:00	*	*	*	*	*	*	*	*	*	*	*	*	*	*	*
18:00	*	*	*	*	*	*	*	*	*	*	*	*	*	*	*
19:00	*	*	*	*	*	*	*	*	*	*	*	*	*	*	*
20:00	*	*	*	*	*	*	*	*	*	*	*	*	*	*	*
21:00	*	*	*	*	*	*	*	*	*	*	*	*	*	*	*
22:00	*	*	*	*	*	*	*	*	*	*	*	*	*	*	*
23:00	*	*	*	*	*	*	*	*	*	*	*	*	*	*	*
Total	118	8	17	11	65	250	797	672	179	22	5	3	3	0	2150
Grand Total	618	76	143	118	473	2161	5366	3881	989	97	15	7	4	1	13949

15th Percentile : 37 MPH
 50th Percentile : 44 MPH
 85th Percentile : 49 MPH
 95th Percentile : 53 MPH

Stats
 Mean Speed(Average) : 42 MPH
 10 MPH Pace Speed : 41-50 MPH
 Number in Pace : 9247
 Percent in Pace : 66.3%
 Number of Vehicles > 45 MPH : 4994
 Percent of Vehicles > 45 MPH : 35.8%

Old Colony Planning Council
 70 School Street
 Brockton, MA 02301
 508-583-1833

Community: Stoughton
 Community#_FC: 285_U5
 Recorder #: Jamar #8
 Tube Layout: L6 Basic
 NB, SB

Station ID:
 Site Code: 285
 Date Start: 14-Jun-05
 Date End: 16-Jun-05

Washington St, at the Easton T/L

Start Time	1 15	16 20	21 25	26 30	31 35	36 40	41 45	46 50	51 55	56 60	61 65	66 70	71 75	76 999	Total
06/14/05	*	*	*	*	*	*	*	*	*	*	*	*	*	*	*
01:00	*	*	*	*	*	*	*	*	*	*	*	*	*	*	*
02:00	*	*	*	*	*	*	*	*	*	*	*	*	*	*	*
03:00	*	*	*	*	*	*	*	*	*	*	*	*	*	*	*
04:00	*	*	*	*	*	*	*	*	*	*	*	*	*	*	*
05:00	*	*	*	*	*	*	*	*	*	*	*	*	*	*	*
06:00	*	*	*	*	*	*	*	*	*	*	*	*	*	*	*
07:00	*	*	*	*	*	*	*	*	*	*	*	*	*	*	*
08:00	*	*	*	*	*	*	*	*	*	*	*	*	*	*	*
09:00	*	*	*	*	*	*	*	*	*	*	*	*	*	*	*
10:00	*	*	*	*	*	*	*	*	*	*	*	*	*	*	*
11:00	*	*	*	*	*	*	*	*	*	*	*	*	*	*	*
12 PM	30	5	14	13	50	104	244	167	41	8	0	0	0	0	676
13:00	26	8	6	7	29	130	274	224	45	6	0	0	0	0	755
14:00	25	3	10	7	30	144	308	228	37	2	0	1	0	0	795
15:00	55	8	11	36	72	225	421	212	35	6	1	1	0	0	1083
16:00	60	5	8	12	48	194	485	244	43	1	3	1	0	0	1104
17:00	69	11	10	8	51	252	518	267	50	4	1	1	0	0	1242
18:00	44	7	9	11	57	150	375	227	60	7	2	0	0	0	949
19:00	19	9	7	4	16	112	265	161	47	6	0	0	2	0	648
20:00	12	4	2	2	16	55	144	122	36	3	0	0	0	0	396
21:00	3	0	1	2	15	57	144	81	23	0	0	0	0	0	326
22:00	4	0	1	1	6	41	80	70	20	1	0	0	0	0	224
23:00	2	0	0	1	5	23	40	42	15	3	0	0	0	0	131
Total	349	60	79	104	395	1487	3298	2045	452	47	7	4	2	0	8329

Old Colony Planning Council
 70 School Street
 Brockton, MA 02301
 508-583-1833

Community: Stoughton
 Community#_FC: 285_U5
 Recorder #: Jamar #8
 Tube Layout: L6 Basic
 NB, SB

Station ID:
 Site Code: 285
 Date Start: 14-Jun-05
 Date End: 16-Jun-05

Washington St, at the Easton T/L

Start Time	1 15	16 20	21 25	26 30	31 35	36 40	41 45	46 50	51 55	56 60	61 65	66 70	71 75	76 999	Total
06/15/05	0	0	0	1	0	11	20	23	7	3	0	0	0	0	65
01:00	0	0	0	0	1	10	16	13	3	2	0	0	0	0	45
02:00	0	0	1	0	0	2	7	3	6	0	1	0	0	0	20
03:00	0	0	0	0	1	2	7	2	9	1	0	0	0	0	22
04:00	0	0	0	0	1	3	11	21	7	4	0	0	0	0	47
05:00	0	0	0	0	0	13	42	73	60	11	4	0	0	0	203
06:00	18	0	1	2	16	50	206	280	120	16	2	0	0	1	712
07:00	36	7	10	28	44	140	376	340	93	8	1	0	0	0	1083
08:00	59	11	8	10	67	223	358	255	76	4	2	0	0	0	1073
09:00	30	3	5	7	25	127	319	180	40	3	3	0	0	0	742
10:00	14	9	5	0	25	102	245	188	49	7	2	0	0	0	646
11:00	34	6	10	3	32	135	278	194	52	2	0	0	0	0	746
12 PM	31	2	10	12	42	136	303	156	59	4	0	0	0	0	755
13:00	32	3	7	7	38	156	285	226	45	11	0	1	0	0	811
14:00	49	3	9	10	22	169	367	201	39	4	0	1	0	0	874
15:00	46	5	5	12	47	192	391	283	74	4	2	0	0	0	1061
16:00	55	5	9	5	42	226	413	307	76	6	2	0	0	0	1146
17:00	92	17	27	10	65	292	468	231	43	3	1	0	1	1	1251
18:00	33	6	13	4	35	197	378	225	73	3	0	0	0	0	967
19:00	22	1	6	0	10	77	280	245	57	6	1	0	0	0	705
20:00	12	8	0	6	22	97	212	120	30	6	1	0	0	0	514
21:00	9	0	2	6	20	86	136	58	19	3	0	0	0	0	339
22:00	3	0	0	2	7	31	104	78	28	3	0	0	0	0	256
23:00	1	0	0	0	3	10	40	58	33	9	1	0	0	1	156
Total	576	86	128	125	565	2487	5262	3760	1098	123	23	2	1	3	14239

Community: Stoughton
 Community#_FC: 285_U5
 Recorder #: Jamar #8
 Tube Layout: L6 Basic
 NB, SB

Station ID:
 Site Code: 285
 Date Start: 14-Jun-05
 Date End: 16-Jun-05

Washington St, at the Easton T/L

Start Time	1 15	16 20	21 25	26 30	31 35	36 40	41 45	46 50	51 55	56 60	61 65	66 70	71 75	76 999	Total
06/16/05	0	0	0	0	5	14	30	24	15	3	0	0	0	0	91
01:00	0	0	0	0	1	9	23	11	6	1	1	0	2	0	54
02:00	0	0	0	1	0	3	12	9	4	0	0	0	0	0	29
03:00	0	0	0	0	0	3	6	9	1	0	1	0	0	0	20
04:00	0	0	1	0	0	4	15	17	11	6	1	0	0	0	55
05:00	1	0	0	0	3	13	31	78	68	17	2	0	0	0	213
06:00	17	1	0	5	11	32	223	299	114	17	5	1	0	0	725
07:00	68	4	5	15	34	136	385	376	110	10	2	0	0	0	1145
08:00	61	4	4	16	37	161	395	318	62	6	2	2	1	0	1069
09:00	30	3	5	1	29	124	283	197	49	7	2	0	0	0	730
10:00	26	4	6	7	25	83	213	214	56	2	1	1	0	0	638
11:00	19	5	4	3	31	123	307	204	48	4	0	1	0	0	749
12 PM	*	*	*	*	*	*	*	*	*	*	*	*	*	*	*
13:00	*	*	*	*	*	*	*	*	*	*	*	*	*	*	*
14:00	*	*	*	*	*	*	*	*	*	*	*	*	*	*	*
15:00	*	*	*	*	*	*	*	*	*	*	*	*	*	*	*
16:00	*	*	*	*	*	*	*	*	*	*	*	*	*	*	*
17:00	*	*	*	*	*	*	*	*	*	*	*	*	*	*	*
18:00	*	*	*	*	*	*	*	*	*	*	*	*	*	*	*
19:00	*	*	*	*	*	*	*	*	*	*	*	*	*	*	*
20:00	*	*	*	*	*	*	*	*	*	*	*	*	*	*	*
21:00	*	*	*	*	*	*	*	*	*	*	*	*	*	*	*
22:00	*	*	*	*	*	*	*	*	*	*	*	*	*	*	*
23:00	*	*	*	*	*	*	*	*	*	*	*	*	*	*	*
Total	222	21	25	48	176	705	1923	1756	544	73	17	5	3	0	5518
Grand Total	1147	167	232	277	1136	4679	10483	7561	2094	243	47	11	6	3	28086

15th Percentile : 37 MPH
 50th Percentile : 44 MPH
 85th Percentile : 49 MPH
 95th Percentile : 53 MPH

Stats
 Mean Speed(Average) : 42 MPH
 10 MPH Pace Speed : 41-50 MPH
 Number in Pace : 18044
 Percent in Pace : 64.2%
 Number of Vehicles > 45 MPH : 9965
 Percent of Vehicles > 45 MPH : 35.5%

Old Colony Planning Council
 70 School Street
 Brockton, MA 02301
 508-583-1833

Community: Stoughton
 Community#_FC: 285_U5
 Recorder #: Jamar #8
 Tube Layout: L6 Basic
 NB

Station ID:
 Site Code: 285
 Date Start: 14-Jun-05
 Date End: 16-Jun-05

Washington St, at the Easton T/L

Start Time	Bikes	Cars & Trailers	2 Axle Long	Buses	2 Axle 6 Tire	3 Axle Single	4 Axle Single	<5 Axl Double	5 Axle Double	>6 Axl Double	<6 Axl Multi	6 Axle Multi	>6 Axl Multi	Total
06/14/05	*	*	*	*	*	*	*	*	*	*	*	*	*	*
01:00	*	*	*	*	*	*	*	*	*	*	*	*	*	*
02:00	*	*	*	*	*	*	*	*	*	*	*	*	*	*
03:00	*	*	*	*	*	*	*	*	*	*	*	*	*	*
04:00	*	*	*	*	*	*	*	*	*	*	*	*	*	*
05:00	*	*	*	*	*	*	*	*	*	*	*	*	*	*
06:00	*	*	*	*	*	*	*	*	*	*	*	*	*	*
07:00	*	*	*	*	*	*	*	*	*	*	*	*	*	*
08:00	*	*	*	*	*	*	*	*	*	*	*	*	*	*
09:00	*	*	*	*	*	*	*	*	*	*	*	*	*	*
10:00	*	*	*	*	*	*	*	*	*	*	*	*	*	*
11:00	*	*	*	*	*	*	*	*	*	*	*	*	*	*
12 PM	2	233	76	4	20	2	0	3	0	1	0	0	0	341
13:00	1	251	80	3	16	2	0	2	5	0	0	0	0	360
14:00	2	275	68	3	15	5	1	0	2	0	0	0	0	371
15:00	7	325	96	8	18	7	0	4	1	0	0	0	0	466
16:00	6	312	91	2	13	8	0	2	1	0	0	0	0	435
17:00	9	352	84	2	14	7	0	0	1	0	0	0	0	469
18:00	5	260	72	1	8	2	0	2	0	0	0	0	0	350
19:00	1	235	45	1	4	0	0	0	1	0	0	0	0	287
20:00	3	133	41	0	1	0	0	0	0	0	0	0	0	178
21:00	3	125	28	0	1	0	0	0	1	0	0	0	0	158
22:00	0	96	15	0	2	0	0	0	0	0	0	0	0	113
23:00	1	44	6	0	3	0	0	0	0	0	0	0	0	54
Total	40	2641	702	24	115	33	1	13	12	1	0	0	0	3582
Percent	1.1%	73.7%	19.6%	0.7%	3.2%	0.9%	0.0%	0.4%	0.3%	0.0%	0.0%	0.0%	0.0%	
AM Peak Vol.														
PM Peak Vol.	17:00	17:00	15:00	15:00	12:00	16:00	14:00	15:00	13:00	12:00				17:00
	9	352	96	8	20	8	1	4	5	1				469

Old Colony Planning Council
 70 School Street
 Brockton, MA 02301
 508-583-1833

Community: Stoughton
 Community#_FC: 285_U5
 Recorder #: Jamar #8
 Tube Layout: L6 Basic
 NB

Station ID:
 Site Code: 285
 Date Start: 14-Jun-05
 Date End: 16-Jun-05

Washington St, at the Easton T/L

Start Time	Bikes	Cars & Trailers	2 Axle Long	Buses	2 Axle 6 Tire	3 Axle Single	4 Axle Single	<5 Axl Double	5 Axle Double	>6 Axl Double	<6 Axl Multi	6 Axle Multi	>6 Axl Multi	Total
06/15/05	0	21	5	0	1	0	0	0	0	0	0	0	0	27
01:00	0	18	4	0	1	0	0	0	0	0	0	0	0	23
02:00	0	7	3	0	1	0	0	0	0	0	0	0	0	11
03:00	0	10	2	0	1	0	0	0	0	0	0	0	0	13
04:00	0	18	8	0	2	1	0	0	0	0	0	0	0	29
05:00	2	83	40	0	11	1	0	0	0	0	0	0	0	137
06:00	1	376	120	4	24	1	0	4	1	0	0	0	0	531
07:00	4	567	144	3	31	3	1	4	1	0	0	0	0	758
08:00	8	475	124	7	33	6	0	2	0	0	0	0	0	655
09:00	2	294	88	3	19	5	2	7	2	0	0	0	0	422
10:00	1	201	84	5	27	3	0	1	1	0	0	0	0	323
11:00	3	283	76	2	18	4	0	3	2	0	0	0	0	391
12 PM	2	262	75	1	17	3	0	1	0	0	0	0	0	361
13:00	0	297	85	1	20	5	0	3	1	0	0	0	0	412
14:00	2	294	93	5	17	4	1	1	1	1	0	0	0	419
15:00	6	331	92	1	15	7	0	3	1	0	0	0	0	456
16:00	7	351	80	1	11	4	0	1	1	0	0	0	0	456
17:00	9	369	108	1	8	4	0	1	1	0	0	0	0	501
18:00	3	289	68	0	9	0	0	1	0	0	0	0	0	370
19:00	6	244	45	0	5	2	0	0	0	0	0	0	0	302
20:00	1	190	40	0	5	1	0	0	0	0	0	0	0	237
21:00	2	129	20	0	2	1	0	0	0	0	0	0	0	154
22:00	1	99	19	0	2	0	0	0	0	0	0	0	0	121
23:00	0	46	10	0	5	0	0	0	0	0	0	0	0	61
Total	60	5254	1433	34	285	55	4	32	12	1	0	0	0	7170
Percent	0.8%	73.3%	20.0%	0.5%	4.0%	0.8%	0.1%	0.4%	0.2%	0.0%	0.0%	0.0%	0.0%	
AM Peak	08:00	07:00	07:00	08:00	08:00	08:00	09:00	09:00	09:00					07:00
Vol.	8	567	144	7	33	6	2	7	2					758
PM Peak	17:00	17:00	17:00	14:00	13:00	15:00	14:00	13:00	13:00	14:00				17:00
Vol.	9	369	108	5	20	7	1	3	1	1				501

Old Colony Planning Council
 70 School Street
 Brockton, MA 02301
 508-583-1833

Community: Stoughton
 Community#_FC: 285_U5
 Recorder #: Jamar #8
 Tube Layout: L6 Basic
 NB

Station ID:
 Site Code: 285
 Date Start: 14-Jun-05
 Date End: 16-Jun-05

Washington St, at the Easton T/L

Start Time	Bikes	Cars & Trailers	2 Axle Long	Buses	2 Axle 6 Tire	3 Axle Single	4 Axle Single	<5 Axl Double	5 Axle Double	>6 Axl Double	<6 Axl Multi	6 Axle Multi	>6 Axl Multi	Total
06/16/05	0	33	2	0	2	0	0	1	0	0	0	0	0	38
01:00	0	20	6	0	1	0	0	0	1	0	0	0	0	28
02:00	0	13	4	0	2	0	0	0	0	0	0	0	0	19
03:00	0	5	2	0	0	1	0	0	1	0	0	0	0	9
04:00	0	22	6	0	2	0	0	0	0	0	0	0	0	30
05:00	2	95	37	0	10	1	0	0	1	0	0	0	0	146
06:00	4	392	117	4	27	4	0	1	0	0	0	0	1	550
07:00	5	575	151	6	26	6	0	5	1	0	0	0	0	775
08:00	6	472	126	8	42	3	0	5	2	0	0	0	0	664
09:00	1	259	100	2	19	5	3	2	1	0	0	0	0	392
10:00	2	198	84	7	19	4	3	5	3	0	0	0	0	325
11:00	4	261	92	1	19	4	3	1	1	0	0	0	0	386
12 PM	*	*	*	*	*	*	*	*	*	*	*	*	*	*
13:00	*	*	*	*	*	*	*	*	*	*	*	*	*	*
14:00	*	*	*	*	*	*	*	*	*	*	*	*	*	*
15:00	*	*	*	*	*	*	*	*	*	*	*	*	*	*
16:00	*	*	*	*	*	*	*	*	*	*	*	*	*	*
17:00	*	*	*	*	*	*	*	*	*	*	*	*	*	*
18:00	*	*	*	*	*	*	*	*	*	*	*	*	*	*
19:00	*	*	*	*	*	*	*	*	*	*	*	*	*	*
20:00	*	*	*	*	*	*	*	*	*	*	*	*	*	*
21:00	*	*	*	*	*	*	*	*	*	*	*	*	*	*
22:00	*	*	*	*	*	*	*	*	*	*	*	*	*	*
23:00	*	*	*	*	*	*	*	*	*	*	*	*	*	*
Total	24	2345	727	28	169	28	9	20	11	0	0	0	1	3362
Percent	0.7%	69.8%	21.6%	0.8%	5.0%	0.8%	0.3%	0.6%	0.3%	0.0%	0.0%	0.0%	0.0%	
AM Peak	08:00	07:00	07:00	08:00	08:00	07:00	09:00	07:00	10:00				06:00	07:00
Vol.	6	575	151	8	42	6	3	5	3				1	775
PM Peak														
Vol.														
Grand Total	124	10240	2862	86	569	116	14	65	35	2	0	0	1	14114
Percent	0.9%	72.6%	20.3%	0.6%	4.0%	0.8%	0.1%	0.5%	0.2%	0.0%	0.0%	0.0%	0.0%	

Community: Stoughton
 Community#_FC: 285_U5
 Recorder #: Jamar #8
 Tube Layout: L6 Basic
 SB

Station ID:
 Site Code: 285
 Date Start: 14-Jun-05
 Date End: 16-Jun-05

Washington St, at the Easton T/L

Start Time	Bikes	Cars & Trailers	2 Axle Long	Buses	2 Axle 6 Tire	3 Axle Single	4 Axle Single	<5 Axl Double	5 Axle Double	>6 Axl Double	<6 Axl Multi	6 Axle Multi	>6 Axl Multi	Total
06/14/05	*	*	*	*	*	*	*	*	*	*	*	*	*	*
01:00	*	*	*	*	*	*	*	*	*	*	*	*	*	*
02:00	*	*	*	*	*	*	*	*	*	*	*	*	*	*
03:00	*	*	*	*	*	*	*	*	*	*	*	*	*	*
04:00	*	*	*	*	*	*	*	*	*	*	*	*	*	*
05:00	*	*	*	*	*	*	*	*	*	*	*	*	*	*
06:00	*	*	*	*	*	*	*	*	*	*	*	*	*	*
07:00	*	*	*	*	*	*	*	*	*	*	*	*	*	*
08:00	*	*	*	*	*	*	*	*	*	*	*	*	*	*
09:00	*	*	*	*	*	*	*	*	*	*	*	*	*	*
10:00	*	*	*	*	*	*	*	*	*	*	*	*	*	*
11:00	*	*	*	*	*	*	*	*	*	*	*	*	*	*
12 PM	1	253	63	2	10	1	0	3	1	0	0	0	0	334
13:00	3	279	80	3	20	2	0	5	2	0	0	0	0	394
14:00	1	308	85	2	23	1	0	1	2	0	0	0	0	423
15:00	9	419	150	8	22	2	0	5	0	0	0	0	0	615
16:00	7	477	147	3	24	1	1	3	3	0	0	0	0	666
17:00	12	594	138	1	24	1	0	1	0	0	0	0	0	771
18:00	4	451	111	2	25	2	0	3	0	0	0	0	0	598
19:00	1	271	71	1	13	2	0	1	0	0	0	0	0	360
20:00	2	163	41	0	7	0	0	1	2	0	0	0	0	216
21:00	0	130	36	0	1	0	0	0	1	0	0	0	0	168
22:00	0	90	19	0	0	0	0	0	0	0	0	0	0	109
23:00	0	65	11	0	1	0	0	0	0	0	0	0	0	77
Total	40	3500	952	22	170	12	1	23	11	0	0	0	0	4731
Percent	0.8%	74.0%	20.1%	0.5%	3.6%	0.3%	0.0%	0.5%	0.2%	0.0%	0.0%	0.0%	0.0%	
AM Peak Vol.														
PM Peak Vol.	17:00	17:00	15:00	15:00	18:00	13:00	16:00	13:00	16:00					17:00
	12	594	150	8	25	2	1	5	3					771

Community: Stoughton
 Community#_FC: 285_U5
 Recorder #: Jamar #8
 Tube Layout: L6 Basic
 SB

Station ID:
 Site Code: 285
 Date Start: 14-Jun-05
 Date End: 16-Jun-05

Washington St, at the Easton T/L

Start Time	Bikes	Cars & Trailers	2 Axle Long	Buses	2 Axle 6 Tire	3 Axle Single	4 Axle Single	<5 Axl Double	5 Axle Double	>6 Axl Double	<6 Axl Multi	6 Axle Multi	>6 Axl Multi	Total
06/15/05	0	32	6	0	0	0	0	0	0	0	0	0	0	38
01:00	0	21	1	0	0	0	0	0	0	0	0	0	0	22
02:00	0	5	3	0	1	0	0	0	0	0	0	0	0	9
03:00	0	5	2	0	2	0	0	0	0	0	0	0	0	9
04:00	0	11	6	0	1	0	0	0	0	0	0	0	0	18
05:00	0	43	16	0	5	2	0	0	0	0	0	0	0	66
06:00	3	116	44	3	11	1	0	0	2	0	0	0	0	180
07:00	2	238	63	2	13	1	0	5	1	0	0	0	0	325
08:00	10	304	75	8	10	4	0	3	2	0	0	0	0	416
09:00	7	220	69	2	16	3	0	1	1	0	0	0	0	319
10:00	0	220	87	3	9	3	0	1	0	0	0	0	0	323
11:00	1	248	82	4	14	2	0	3	0	0	0	0	0	354
12 PM	3	275	85	1	19	5	0	3	3	0	0	0	0	394
13:00	4	286	84	3	12	8	0	1	1	0	0	0	0	399
14:00	4	310	107	5	21	4	0	1	2	0	0	0	0	454
15:00	7	436	117	5	27	5	0	6	1	0	0	0	0	604
16:00	10	495	152	3	19	3	0	4	3	0	0	0	0	689
17:00	10	571	136	2	23	2	0	0	3	1	0	0	0	748
18:00	4	475	92	2	22	1	0	0	0	0	0	0	0	596
19:00	7	286	85	1	18	2	0	1	1	0	0	0	0	401
20:00	2	219	45	0	9	0	0	1	0	0	0	0	0	276
21:00	2	143	34	0	4	0	0	0	0	0	0	0	0	183
22:00	0	109	21	0	4	0	0	0	0	0	0	0	0	134
23:00	0	80	15	0	0	0	0	0	0	0	0	0	0	95
Total	76	5148	1427	44	260	46	0	30	20	1	0	0	0	7052
Percent	1.1%	73.0%	20.2%	0.6%	3.7%	0.7%	0.0%	0.4%	0.3%	0.0%	0.0%	0.0%	0.0%	
AM Peak	08:00	08:00	10:00	08:00	09:00	08:00		07:00	06:00					08:00
Vol.	10	304	87	8	16	4		5	2					416
PM Peak	16:00	17:00	16:00	14:00	15:00	13:00		15:00	12:00	17:00				17:00
Vol.	10	571	152	5	27	8		6	3	1				748

Old Colony Planning Council
 70 School Street
 Brockton, MA 02301
 508-583-1833

Community: Stoughton
 Community#_FC: 285_U5
 Recorder #: Jamar #8
 Tube Layout: L6 Basic
 SB

Station ID:
 Site Code: 285
 Date Start: 14-Jun-05
 Date End: 16-Jun-05

Washington St, at the Easton T/L

Start Time	Bikes	Cars & Trailers	2 Axle Long	Buses	2 Axle 6 Tire	3 Axle Single	4 Axle Single	<5 Axl Double	5 Axle Double	>6 Axl Double	<6 Axl Multi	6 Axle Multi	>6 Axl Multi	Total
06/16/05	0	46	7	0	0	0	0	0	0	0	0	0	0	53
01:00	0	24	2	0	0	0	0	0	0	0	0	0	0	26
02:00	0	8	0	1	0	0	0	0	1	0	0	0	0	10
03:00	0	7	3	0	1	0	0	0	0	0	0	0	0	11
04:00	0	15	8	0	2	0	0	0	0	0	0	0	0	25
05:00	0	40	19	0	6	2	0	0	0	0	0	0	0	67
06:00	5	125	32	1	8	2	0	0	0	0	0	0	0	173
07:00	5	266	72	0	14	3	0	6	1	0	0	0	0	367
08:00	11	274	94	4	17	4	0	0	0	0	0	0	0	404
09:00	2	242	77	2	9	3	0	1	1	0	0	0	0	337
10:00	3	212	72	2	16	3	0	3	1	0	0	0	0	312
11:00	4	244	89	1	13	6	0	3	2	0	0	0	0	362
12 PM	*	*	*	*	*	*	*	*	*	*	*	*	*	*
13:00	*	*	*	*	*	*	*	*	*	*	*	*	*	*
14:00	*	*	*	*	*	*	*	*	*	*	*	*	*	*
15:00	*	*	*	*	*	*	*	*	*	*	*	*	*	*
16:00	*	*	*	*	*	*	*	*	*	*	*	*	*	*
17:00	*	*	*	*	*	*	*	*	*	*	*	*	*	*
18:00	*	*	*	*	*	*	*	*	*	*	*	*	*	*
19:00	*	*	*	*	*	*	*	*	*	*	*	*	*	*
20:00	*	*	*	*	*	*	*	*	*	*	*	*	*	*
21:00	*	*	*	*	*	*	*	*	*	*	*	*	*	*
22:00	*	*	*	*	*	*	*	*	*	*	*	*	*	*
23:00	*	*	*	*	*	*	*	*	*	*	*	*	*	*
Total	30	1503	475	11	86	23	0	13	6	0	0	0	0	2147
Percent	1.4%	70.0%	22.1%	0.5%	4.0%	1.1%	0.0%	0.6%	0.3%	0.0%	0.0%	0.0%	0.0%	
AM Peak Vol.	11	274	94	4	17	6		6	2					404
PM Peak Vol.														
Grand Total	146	10151	2854	77	516	81	1	66	37	1	0	0	0	13930
Percent	1.0%	72.9%	20.5%	0.6%	3.7%	0.6%	0.0%	0.5%	0.3%	0.0%	0.0%	0.0%	0.0%	

Old Colony Planning Council
 70 School Street
 Brockton, MA 02301
 508-583-1833

Community: Stoughton
 Community#_FC: 285_U5
 Recorder #: Jamar #8
 Tube Layout: L6 Basic
 NB, SB

Station ID:
 Site Code: 285
 Date Start: 14-Jun-05
 Date End: 16-Jun-05

Washington St, at the Easton T/L

Start Time	Bikes	Cars & Trailers	2 Axle Long	Buses	2 Axle 6 Tire	3 Axle Single	4 Axle Single	<5 Axl Double	5 Axle Double	>6 Axl Double	<6 Axl Multi	6 Axle Multi	>6 Axl Multi	Total
06/14/05	*	*	*	*	*	*	*	*	*	*	*	*	*	*
01:00	*	*	*	*	*	*	*	*	*	*	*	*	*	*
02:00	*	*	*	*	*	*	*	*	*	*	*	*	*	*
03:00	*	*	*	*	*	*	*	*	*	*	*	*	*	*
04:00	*	*	*	*	*	*	*	*	*	*	*	*	*	*
05:00	*	*	*	*	*	*	*	*	*	*	*	*	*	*
06:00	*	*	*	*	*	*	*	*	*	*	*	*	*	*
07:00	*	*	*	*	*	*	*	*	*	*	*	*	*	*
08:00	*	*	*	*	*	*	*	*	*	*	*	*	*	*
09:00	*	*	*	*	*	*	*	*	*	*	*	*	*	*
10:00	*	*	*	*	*	*	*	*	*	*	*	*	*	*
11:00	*	*	*	*	*	*	*	*	*	*	*	*	*	*
12 PM	3	486	139	6	30	3	0	6	1	1	0	0	0	675
13:00	4	530	160	6	36	4	0	7	7	0	0	0	0	754
14:00	3	583	153	5	38	6	1	1	4	0	0	0	0	794
15:00	16	744	246	16	40	9	0	9	1	0	0	0	0	1081
16:00	13	789	238	5	37	9	1	5	4	0	0	0	0	1101
17:00	21	946	222	3	38	8	0	1	1	0	0	0	0	1240
18:00	9	711	183	3	33	4	0	5	0	0	0	0	0	948
19:00	2	506	116	2	17	2	0	1	1	0	0	0	0	647
20:00	5	296	82	0	8	0	0	1	2	0	0	0	0	394
21:00	3	255	64	0	2	0	0	0	2	0	0	0	0	326
22:00	0	186	34	0	2	0	0	0	0	0	0	0	0	222
23:00	1	109	17	0	4	0	0	0	0	0	0	0	0	131
Total	80	6141	1654	46	285	45	2	36	23	1	0	0	0	8313
Percent	1.0%	73.9%	19.9%	0.6%	3.4%	0.5%	0.0%	0.4%	0.3%	0.0%	0.0%	0.0%	0.0%	
AM Peak Vol.														
PM Peak Vol.	17:00	17:00	15:00	15:00	15:00	15:00	14:00	15:00	13:00	12:00				17:00
	21	946	246	16	40	9	1	9	7	1				1240

Old Colony Planning Council
 70 School Street
 Brockton, MA 02301
 508-583-1833

Community: Stoughton
 Community#_FC: 285_U5
 Recorder #: Jamar #8
 Tube Layout: L6 Basic
 NB, SB

Station ID:
 Site Code: 285
 Date Start: 14-Jun-05
 Date End: 16-Jun-05

Washington St, at the Easton T/L

Start Time	Bikes	Cars & Trailers	2 Axle Long	Buses	2 Axle 6 Tire	3 Axle Single	4 Axle Single	<5 Axl Double	5 Axle Double	>6 Axl Double	<6 Axl Multi	6 Axle Multi	>6 Axl Multi	Total
06/15/05	0	53	11	0	1	0	0	0	0	0	0	0	0	65
01:00	0	39	5	0	1	0	0	0	0	0	0	0	0	45
02:00	0	12	6	0	2	0	0	0	0	0	0	0	0	20
03:00	0	15	4	0	3	0	0	0	0	0	0	0	0	22
04:00	0	29	14	0	3	1	0	0	0	0	0	0	0	47
05:00	2	126	56	0	16	3	0	0	0	0	0	0	0	203
06:00	4	492	164	7	35	2	0	4	3	0	0	0	0	711
07:00	6	805	207	5	44	4	1	9	2	0	0	0	0	1083
08:00	18	779	199	15	43	10	0	5	2	0	0	0	0	1071
09:00	9	514	157	5	35	8	2	8	3	0	0	0	0	741
10:00	1	421	171	8	36	6	0	2	1	0	0	0	0	646
11:00	4	531	158	6	32	6	0	6	2	0	0	0	0	745
12 PM	5	537	160	2	36	8	0	4	3	0	0	0	0	755
13:00	4	583	169	4	32	13	0	4	2	0	0	0	0	811
14:00	6	604	200	10	38	8	1	2	3	1	0	0	0	873
15:00	13	767	209	6	42	12	0	9	2	0	0	0	0	1060
16:00	17	846	232	4	30	7	0	5	4	0	0	0	0	1145
17:00	19	940	244	3	31	6	0	1	4	1	0	0	0	1249
18:00	7	764	160	2	31	1	0	1	0	0	0	0	0	966
19:00	13	530	130	1	23	4	0	1	1	0	0	0	0	703
20:00	3	409	85	0	14	1	0	1	0	0	0	0	0	513
21:00	4	272	54	0	6	1	0	0	0	0	0	0	0	337
22:00	1	208	40	0	6	0	0	0	0	0	0	0	0	255
23:00	0	126	25	0	5	0	0	0	0	0	0	0	0	156
Total	136	10402	2860	78	545	101	4	62	32	2	0	0	0	14222
Percent	1.0%	73.1%	20.1%	0.5%	3.8%	0.7%	0.0%	0.4%	0.2%	0.0%	0.0%	0.0%	0.0%	
AM Peak	08:00	07:00	07:00	08:00	07:00	08:00	09:00	07:00	06:00					07:00
Vol.	18	805	207	15	44	10	2	9	3					1083
PM Peak	17:00	17:00	17:00	14:00	15:00	13:00	14:00	15:00	16:00	14:00				17:00
Vol.	19	940	244	10	42	13	1	9	4	1				1249

Old Colony Planning Council
 70 School Street
 Brockton, MA 02301
 508-583-1833

Community: Stoughton
 Community#_FC: 285_U5
 Recorder #: Jamar #8
 Tube Layout: L6 Basic
 NB, SB

Station ID:
 Site Code: 285
 Date Start: 14-Jun-05
 Date End: 16-Jun-05

Washington St, at the Easton T/L

Start Time	Bikes	Cars & Trailers	2 Axle Long	Buses	2 Axle 6 Tire	3 Axle Single	4 Axle Single	<5 Axl Double	5 Axle Double	>6 Axl Double	<6 Axl Multi	6 Axle Multi	>6 Axl Multi	Total
06/16/05	0	79	9	0	2	0	0	1	0	0	0	0	0	91
01:00	0	44	8	0	1	0	0	0	1	0	0	0	0	54
02:00	0	21	4	1	2	0	0	0	1	0	0	0	0	29
03:00	0	12	5	0	1	1	0	0	1	0	0	0	0	20
04:00	0	37	14	0	4	0	0	0	0	0	0	0	0	55
05:00	2	135	56	0	16	3	0	0	1	0	0	0	0	213
06:00	9	517	149	5	35	6	0	1	0	0	0	0	1	723
07:00	10	841	223	6	40	9	0	11	2	0	0	0	0	1142
08:00	17	746	220	12	59	7	0	5	2	0	0	0	0	1068
09:00	3	501	177	4	28	8	3	3	2	0	0	0	0	729
10:00	5	410	156	9	35	7	3	8	4	0	0	0	0	637
11:00	8	505	181	2	32	10	3	4	3	0	0	0	0	748
12 PM	*	*	*	*	*	*	*	*	*	*	*	*	*	*
13:00	*	*	*	*	*	*	*	*	*	*	*	*	*	*
14:00	*	*	*	*	*	*	*	*	*	*	*	*	*	*
15:00	*	*	*	*	*	*	*	*	*	*	*	*	*	*
16:00	*	*	*	*	*	*	*	*	*	*	*	*	*	*
17:00	*	*	*	*	*	*	*	*	*	*	*	*	*	*
18:00	*	*	*	*	*	*	*	*	*	*	*	*	*	*
19:00	*	*	*	*	*	*	*	*	*	*	*	*	*	*
20:00	*	*	*	*	*	*	*	*	*	*	*	*	*	*
21:00	*	*	*	*	*	*	*	*	*	*	*	*	*	*
22:00	*	*	*	*	*	*	*	*	*	*	*	*	*	*
23:00	*	*	*	*	*	*	*	*	*	*	*	*	*	*
Total	54	3848	1202	39	255	51	9	33	17	0	0	0	1	5509
Percent	1.0%	69.8%	21.8%	0.7%	4.6%	0.9%	0.2%	0.6%	0.3%	0.0%	0.0%	0.0%	0.0%	
AM Peak	08:00	07:00	07:00	08:00	08:00	11:00	09:00	07:00	10:00				06:00	07:00
Vol.	17	841	223	12	59	10	3	11	4				1	1142
PM Peak														
Vol.														
Grand Total	270	20391	5716	163	1085	197	15	131	72	3	0	0	1	28044
Percent	1.0%	72.7%	20.4%	0.6%	3.9%	0.7%	0.1%	0.5%	0.3%	0.0%	0.0%	0.0%	0.0%	

Old Colony Planning Council
 70 School Street
 Brockton, MA 02301
 508-583-1833

Community: Easton
 Community#_FC: 88_U5
 Recorder #: Jamar #7
 Tube Layout: L6 Basic

Station ID:
 Site Code: 88
 Date Start: 01-Nov-05
 Date End: 03-Nov-05
 Union St, east of Washington St

Start Time	31-Oct-05		Tue		Wed		Thu		Fri		Sat		Sun		Week Average	
	WB	EB	WB	EB	WB	EB	WB	EB	WB	EB	WB	EB	WB	EB	WB	EB
12:00 AM	*	*	*	*	21	12	23	11	*	*	*	*	*	*	22	12
01:00	*	*	*	*	7	2	4	4	*	*	*	*	*	*	6	3
02:00	*	*	*	*	0	4	5	4	*	*	*	*	*	*	2	4
03:00	*	*	*	*	7	7	5	7	*	*	*	*	*	*	6	7
04:00	*	*	*	*	7	12	7	12	*	*	*	*	*	*	7	12
05:00	*	*	*	*	33	70	19	66	*	*	*	*	*	*	26	68
06:00	*	*	*	*	94	171	87	157	*	*	*	*	*	*	90	164
07:00	*	*	*	*	164	286	154	306	*	*	*	*	*	*	159	296
08:00	*	*	*	*	166	321	171	295	*	*	*	*	*	*	168	308
09:00	*	*	*	*	140	207	150	219	*	*	*	*	*	*	145	213
10:00	*	*	*	*	192	209	166	180	*	*	*	*	*	*	179	194
11:00	*	*	*	*	217	202	204	201	*	*	*	*	*	*	210	202
12:00 PM	*	*	*	*	200	214	212	232	*	*	*	*	*	*	206	223
01:00	*	*	*	*	223	194	221	186	*	*	*	*	*	*	222	190
02:00	*	*	*	*	252	225	247	217	*	*	*	*	*	*	250	221
03:00	*	*	263	236	284	219	*	*	*	*	*	*	*	*	274	228
04:00	*	*	297	226	273	255	*	*	*	*	*	*	*	*	285	240
05:00	*	*	293	220	274	253	*	*	*	*	*	*	*	*	284	236
06:00	*	*	230	178	225	153	*	*	*	*	*	*	*	*	228	166
07:00	*	*	133	100	157	110	*	*	*	*	*	*	*	*	145	105
08:00	*	*	111	74	129	66	*	*	*	*	*	*	*	*	120	70
09:00	*	*	71	40	96	49	*	*	*	*	*	*	*	*	84	44
10:00	*	*	60	41	44	35	*	*	*	*	*	*	*	*	52	38
11:00	*	*	27	20	34	22	*	*	*	*	*	*	*	*	30	21
Lane Day	0	0	1485	1135	3239	3298	1675	2097	0	0	0	0	0	0	3200	3265
AM Peak Vol.			2620		6537		3772		0		0		0		6465	
PM Peak Vol.			16:00	15:00	15:00	16:00	14:00	12:00							16:00	16:00
			297	236	284	255	247	232							285	240

Comb. Total 0 2620 6537 3772 0 0 0 6465

ADT Not Calculated

Old Colony Planning Council
 70 School Street
 Brockton, MA 02301
 508-583-1833

Community: Easton
 Community#_FC: 88_U5
 Recorder #: Jamar #7
 Tube Layout: L6 Basic

Station ID:
 Site Code: 88
 Date Start: 01-Nov-05
 Date End: 03-Nov-05
 Union St, east of Washington St

Start Time	31-Oct-05 Mon	01-Nov-05 Tue	02-Nov-05 Wed	03-Nov-05 Thu	04-Nov-05 Fri	05-Nov-05 Sat	06-Nov-05 Sun	Week Average
12:00 AM	*	*	33	34	*	*	*	34
01:00	*	*	9	8	*	*	*	8
02:00	*	*	4	9	*	*	*	6
03:00	*	*	14	12	*	*	*	13
04:00	*	*	19	19	*	*	*	19
05:00	*	*	103	85	*	*	*	94
06:00	*	*	265	244	*	*	*	254
07:00	*	*	450	460	*	*	*	455
08:00	*	*	487	466	*	*	*	476
09:00	*	*	347	369	*	*	*	358
10:00	*	*	401	346	*	*	*	374
11:00	*	*	419	405	*	*	*	412
12:00 PM	*	*	414	444	*	*	*	429
01:00	*	*	417	407	*	*	*	412
02:00	*	*	477	464	*	*	*	470
03:00	*	499	503	*	*	*	*	501
04:00	*	523	528	*	*	*	*	526
05:00	*	513	527	*	*	*	*	520
06:00	*	408	378	*	*	*	*	393
07:00	*	233	267	*	*	*	*	250
08:00	*	185	195	*	*	*	*	190
09:00	*	111	145	*	*	*	*	128
10:00	*	101	79	*	*	*	*	90
11:00	*	47	56	*	*	*	*	52
Total	0	2620	6537	3772	0	0	0	6464
Percentage	0.0%	40.5%	101.1%	58.4%	0.0%	0.0%	0.0%	
AM Peak Vol.			08:00 487	08:00 466				08:00 476
PM Peak Vol.		16:00 523	16:00 528	14:00 464				16:00 526

Old Colony Planning Council
 70 School Street
 Brockton, MA 02301
 508-583-1833

Community: Easton
 Community#_FC: 88_U5
 Recorder #: Jamar #7
 Tube Layout: L6 Basic
 WB

Station ID:
 Site Code: 88
 Date Start: 01-Nov-05
 Date End: 03-Nov-05

Union St, east of Washington St

Start Time	1 15	16 20	21 25	26 30	31 35	36 40	41 45	46 50	51 55	56 60	61 65	66 70	71 75	76 999	Total
11/01/05	*	*	*	*	*	*	*	*	*	*	*	*	*	*	*
01:00	*	*	*	*	*	*	*	*	*	*	*	*	*	*	*
02:00	*	*	*	*	*	*	*	*	*	*	*	*	*	*	*
03:00	*	*	*	*	*	*	*	*	*	*	*	*	*	*	*
04:00	*	*	*	*	*	*	*	*	*	*	*	*	*	*	*
05:00	*	*	*	*	*	*	*	*	*	*	*	*	*	*	*
06:00	*	*	*	*	*	*	*	*	*	*	*	*	*	*	*
07:00	*	*	*	*	*	*	*	*	*	*	*	*	*	*	*
08:00	*	*	*	*	*	*	*	*	*	*	*	*	*	*	*
09:00	*	*	*	*	*	*	*	*	*	*	*	*	*	*	*
10:00	*	*	*	*	*	*	*	*	*	*	*	*	*	*	*
11:00	*	*	*	*	*	*	*	*	*	*	*	*	*	*	*
12 PM	*	*	*	*	*	*	*	*	*	*	*	*	*	*	*
13:00	*	*	*	*	*	*	*	*	*	*	*	*	*	*	*
14:00	*	*	*	*	*	*	*	*	*	*	*	*	*	*	*
15:00	20	12	4	5	3	34	87	61	27	8	1	1	0	0	263
16:00	28	5	3	2	12	44	101	70	25	6	1	0	0	0	297
17:00	26	4	2	0	9	82	84	60	21	5	0	0	0	0	293
18:00	15	4	5	3	7	37	80	58	20	0	1	0	0	0	230
19:00	3	1	4	0	7	24	41	29	20	2	1	1	0	0	133
20:00	8	2	3	0	3	6	36	34	13	6	0	0	0	0	111
21:00	2	1	2	0	4	12	20	21	6	2	1	0	0	0	71
22:00	3	2	0	0	0	4	22	16	11	2	0	0	0	0	60
23:00	5	1	1	0	2	4	5	6	1	1	0	0	1	0	27
Total	110	32	24	10	47	247	476	355	144	32	5	2	1	0	1485

Old Colony Planning Council
 70 School Street
 Brockton, MA 02301
 508-583-1833

Community: Easton
 Community#_FC: 88_U5
 Recorder #: Jamar #7
 Tube Layout: L6 Basic
 WB

Station ID:
 Site Code: 88
 Date Start: 01-Nov-05
 Date End: 03-Nov-05

Union St, east of Washington St

Start Time	1	16	21	26	31	36	41	46	51	56	61	66	71	76	Total
	15	20	25	30	35	40	45	50	55	60	65	70	75	999	
11/02/05	0	0	0	1	1	0	5	7	5	2	0	0	0	0	21
01:00	0	0	0	1	0	2	3	1	0	0	0	0	0	0	7
02:00	0	0	0	0	0	0	0	0	0	0	0	0	0	0	0
03:00	0	0	0	0	1	1	3	0	0	2	0	0	0	0	7
04:00	0	1	1	0	1	1	0	1	1	1	0	0	0	0	7
05:00	2	0	1	1	0	5	7	12	2	3	0	0	0	0	33
06:00	10	0	0	2	4	13	26	21	15	3	0	0	0	0	94
07:00	12	1	1	4	8	24	44	38	25	6	0	1	0	0	164
08:00	21	3	3	1	5	28	55	34	14	0	1	1	0	0	166
09:00	7	2	3	1	3	33	40	27	18	4	2	0	0	0	140
10:00	10	1	1	1	7	43	68	46	10	5	0	0	0	0	192
11:00	17	11	3	4	7	31	70	46	23	4	1	0	0	0	217
12 PM	11	4	5	3	14	46	69	31	16	0	1	1	0	0	200
13:00	13	5	1	1	8	44	65	55	25	5	1	0	0	0	223
14:00	12	4	6	4	21	35	70	72	24	4	0	0	0	0	252
15:00	29	7	4	3	13	52	90	60	22	3	0	1	0	0	284
16:00	12	1	1	3	9	42	91	73	31	8	1	1	0	0	273
17:00	12	7	0	3	6	46	108	63	26	3	0	0	0	0	274
18:00	14	8	7	3	10	39	78	44	18	4	0	0	0	0	225
19:00	5	3	2	3	7	25	46	42	16	6	0	1	0	1	157
20:00	8	3	2	1	5	25	32	37	11	4	1	0	0	0	129
21:00	4	2	1	3	4	10	37	24	8	3	0	0	0	0	96
22:00	3	0	0	1	0	8	12	14	5	0	1	0	0	0	44
23:00	3	0	1	0	1	4	9	6	7	2	1	0	0	0	34
Total	205	63	43	44	135	557	1028	754	322	72	9	6	0	1	3239

Old Colony Planning Council
 70 School Street
 Brockton, MA 02301
 508-583-1833

Community: Easton
 Community#_FC: 88_U5
 Recorder #: Jamar #7
 Tube Layout: L6 Basic
 WB

Station ID:
 Site Code: 88
 Date Start: 01-Nov-05
 Date End: 03-Nov-05
 Union St, east of Washington St

Start Time	1 15	16 20	21 25	26 30	31 35	36 40	41 45	46 50	51 55	56 60	61 65	66 70	71 75	76 999	Total
11/03/05	2	0	0	0	2	5	4	4	4	1	0	0	0	1	23
01:00	0	0	0	0	0	0	1	0	1	2	0	0	0	0	4
02:00	1	0	0	0	0	0	0	1	2	1	0	0	0	0	5
03:00	0	0	0	0	1	0	0	2	1	0	1	0	0	0	5
04:00	0	0	1	0	0	1	1	1	2	1	0	0	0	0	7
05:00	2	0	0	0	1	1	4	4	3	2	2	0	0	0	19
06:00	6	0	0	0	4	11	33	16	15	2	0	0	0	0	87
07:00	15	1	0	3	4	24	45	38	15	6	2	1	0	0	154
08:00	28	4	2	1	6	24	46	37	21	2	0	0	0	0	171
09:00	14	2	5	1	5	25	42	33	18	4	1	0	0	0	150
10:00	11	4	3	3	9	28	50	33	19	3	3	0	0	0	166
11:00	15	1	2	1	3	36	61	53	24	7	1	0	0	0	204
12 PM	11	0	5	3	4	41	74	51	19	3	0	0	0	1	212
13:00	9	8	2	0	9	33	83	54	18	1	4	0	0	0	221
14:00	8	5	4	2	8	41	85	68	24	2	0	0	0	0	247
15:00	*	*	*	*	*	*	*	*	*	*	*	*	*	*	*
16:00	*	*	*	*	*	*	*	*	*	*	*	*	*	*	*
17:00	*	*	*	*	*	*	*	*	*	*	*	*	*	*	*
18:00	*	*	*	*	*	*	*	*	*	*	*	*	*	*	*
19:00	*	*	*	*	*	*	*	*	*	*	*	*	*	*	*
20:00	*	*	*	*	*	*	*	*	*	*	*	*	*	*	*
21:00	*	*	*	*	*	*	*	*	*	*	*	*	*	*	*
22:00	*	*	*	*	*	*	*	*	*	*	*	*	*	*	*
23:00	*	*	*	*	*	*	*	*	*	*	*	*	*	*	*
Total	122	25	24	14	56	270	529	395	186	37	14	1	0	2	1675
Grand Total	437	120	91	68	238	1074	2033	1504	652	141	28	9	1	3	6399

15th Percentile : 36 MPH
 50th Percentile : 43 MPH
 85th Percentile : 50 MPH
 95th Percentile : 54 MPH

Stats
 Mean Speed(Average) : 41 MPH
 10 MPH Pace Speed : 41-50 MPH
 Number in Pace : 3537
 Percent in Pace : 55.3%
 Number of Vehicles > 30 MPH : 5683
 Percent of Vehicles > 30 MPH : 88.8%

Old Colony Planning Council
 70 School Street
 Brockton, MA 02301
 508-583-1833

Community: Easton
 Community#_FC: 88_U5
 Recorder #: Jamar #7
 Tube Layout: L6 Basic
 EB

Station ID:
 Site Code: 88
 Date Start: 01-Nov-05
 Date End: 03-Nov-05

Union St, east of Washington St

Start Time	1 15	16 20	21 25	26 30	31 35	36 40	41 45	46 50	51 55	56 60	61 65	66 70	71 75	76 999	Total
11/01/05	*	*	*	*	*	*	*	*	*	*	*	*	*	*	*
01:00	*	*	*	*	*	*	*	*	*	*	*	*	*	*	*
02:00	*	*	*	*	*	*	*	*	*	*	*	*	*	*	*
03:00	*	*	*	*	*	*	*	*	*	*	*	*	*	*	*
04:00	*	*	*	*	*	*	*	*	*	*	*	*	*	*	*
05:00	*	*	*	*	*	*	*	*	*	*	*	*	*	*	*
06:00	*	*	*	*	*	*	*	*	*	*	*	*	*	*	*
07:00	*	*	*	*	*	*	*	*	*	*	*	*	*	*	*
08:00	*	*	*	*	*	*	*	*	*	*	*	*	*	*	*
09:00	*	*	*	*	*	*	*	*	*	*	*	*	*	*	*
10:00	*	*	*	*	*	*	*	*	*	*	*	*	*	*	*
11:00	*	*	*	*	*	*	*	*	*	*	*	*	*	*	*
12 PM	*	*	*	*	*	*	*	*	*	*	*	*	*	*	*
13:00	*	*	*	*	*	*	*	*	*	*	*	*	*	*	*
14:00	*	*	*	*	*	*	*	*	*	*	*	*	*	*	*
15:00	19	10	8	39	122	37	1	0	0	0	0	0	0	0	236
16:00	13	2	5	34	128	40	3	0	1	0	0	0	0	0	226
17:00	11	2	13	65	111	17	1	0	0	0	0	0	0	0	220
18:00	7	2	2	45	107	14	1	0	0	0	0	0	0	0	178
19:00	8	2	2	13	58	16	1	0	0	0	0	0	0	0	100
20:00	2	4	1	16	34	16	1	0	0	0	0	0	0	0	74
21:00	1	1	0	13	19	5	1	0	0	0	0	0	0	0	40
22:00	4	0	1	9	17	8	2	0	0	0	0	0	0	0	41
23:00	1	2	0	0	12	3	2	0	0	0	0	0	0	0	20
Total	66	25	32	234	608	156	13	0	1	0	0	0	0	0	1135

Old Colony Planning Council
 70 School Street
 Brockton, MA 02301
 508-583-1833

Community: Easton
 Community#_FC: 88_U5
 Recorder #: Jamar #7
 Tube Layout: L6 Basic
 EB

Station ID:
 Site Code: 88
 Date Start: 01-Nov-05
 Date End: 03-Nov-05

Start Time	Union St, east of Washington St														Total
	1 15	16 20	21 25	26 30	31 35	36 40	41 45	46 50	51 55	56 60	61 65	66 70	71 75	76 999	
11/02/05	0	0	0	4	5	3	0	0	0	0	0	0	0	0	0
01:00	0	0	0	1	0	1	0	0	0	0	0	0	0	0	0
02:00	1	0	0	1	2	0	0	0	0	0	0	0	0	0	0
03:00	2	0	1	1	3	0	0	0	0	0	0	0	0	0	0
04:00	1	0	0	4	3	4	0	0	0	0	0	0	0	0	0
05:00	1	0	0	6	26	30	6	1	0	0	0	0	0	0	0
06:00	6	4	1	22	91	43	3	0	1	0	0	0	0	0	0
07:00	6	5	14	43	147	69	2	0	0	0	0	0	0	0	0
08:00	18	9	12	50	183	49	0	0	0	0	0	0	0	0	0
09:00	4	6	6	37	114	40	0	0	0	0	0	0	0	0	0
10:00	9	3	1	33	126	33	4	0	0	0	0	0	0	0	0
11:00	19	6	2	36	96	43	0	0	0	0	0	0	0	0	0
12 PM	7	5	5	49	118	28	1	0	1	0	0	0	0	0	0
13:00	13	5	4	29	117	25	1	0	0	0	0	0	0	0	0
14:00	23	9	8	26	116	41	1	1	0	0	0	0	0	0	0
15:00	19	3	10	46	110	28	1	1	0	1	0	0	0	0	0
16:00	18	2	10	51	119	51	2	0	2	0	0	0	0	0	0
17:00	15	8	5	70	131	22	1	0	0	1	0	0	0	0	0
18:00	12	4	1	42	74	19	1	0	0	0	0	0	0	0	0
19:00	12	3	1	23	58	11	1	0	0	1	0	0	0	0	0
20:00	7	0	0	15	35	9	0	0	0	0	0	0	0	0	0
21:00	5	1	1	7	29	6	0	0	0	0	0	0	0	0	0
22:00	4	0	0	6	14	7	3	1	0	0	0	0	0	0	0
23:00	7	0	1	4	6	2	0	0	0	0	0	0	0	0	0
Total	209	73	83	606	1723	564	29	4	4	3	0	0	0	0	0

Community: Easton
 Community#_FC: 88_U5
 Recorder #: Jamar #7
 Tube Layout: L6 Basic
 EB

Station ID:
 Site Code: 88
 Date Start: 01-Nov-05
 Date End: 03-Nov-05
 Union St, east of Washington St

Start Time	1 15	16 20	21 25	26 30	31 35	36 40	41 45	46 50	51 55	56 60	61 65	66 70	71 75	76 999	Total
11/03/05	3	0	0	1	5	2	0	0	0	0	0	0	0	0	11
01:00	1	0	0	1	2	0	0	0	0	0	0	0	0	0	4
02:00	1	0	0	0	3	0	0	0	0	0	0	0	0	0	4
03:00	0	1	1	1	0	2	2	0	0	0	0	0	0	0	7
04:00	2	0	0	2	4	3	1	0	0	0	0	0	0	0	12
05:00	4	1	0	5	36	13	7	0	0	0	0	0	0	0	66
06:00	10	5	3	21	77	41	0	0	0	0	0	0	0	0	157
07:00	11	8	7	45	167	66	2	0	0	0	0	0	0	0	306
08:00	7	9	13	48	161	57	0	0	0	0	0	0	0	0	295
09:00	8	1	7	35	111	52	5	0	0	0	0	0	0	0	219
10:00	12	2	3	29	95	38	1	0	0	0	0	0	0	0	180
11:00	11	4	4	39	114	27	1	1	0	0	0	0	0	0	201
12 PM	15	8	14	41	110	40	3	0	1	0	0	0	0	0	232
13:00	12	7	1	43	88	32	2	0	1	0	0	0	0	0	186
14:00	14	8	11	33	105	44	1	0	1	0	0	0	0	0	217
15:00	*	*	*	*	*	*	*	*	*	*	*	*	*	*	*
16:00	*	*	*	*	*	*	*	*	*	*	*	*	*	*	*
17:00	*	*	*	*	*	*	*	*	*	*	*	*	*	*	*
18:00	*	*	*	*	*	*	*	*	*	*	*	*	*	*	*
19:00	*	*	*	*	*	*	*	*	*	*	*	*	*	*	*
20:00	*	*	*	*	*	*	*	*	*	*	*	*	*	*	*
21:00	*	*	*	*	*	*	*	*	*	*	*	*	*	*	*
22:00	*	*	*	*	*	*	*	*	*	*	*	*	*	*	*
23:00	*	*	*	*	*	*	*	*	*	*	*	*	*	*	*
Total	111	54	64	344	1078	417	25	1	3	0	0	0	0	0	2097
Grand Total	386	152	179	1184	3409	1137	67	5	8	3	0	0	0	0	6530

15th Percentile : 27 MPH
 50th Percentile : 32 MPH
 85th Percentile : 37 MPH
 95th Percentile : 39 MPH

Stats
 Mean Speed(Average) : 31 MPH
 10 MPH Pace Speed : 26-35 MPH
 Number in Pace : 4593
 Percent in Pace : 70.3%
 Number of Vehicles > 30 MPH : 4629
 Percent of Vehicles > 30 MPH : 70.9%

Old Colony Planning Council
 70 School Street
 Brockton, MA 02301
 508-583-1833

Community: Easton
 Community#_FC: 88_U5
 Recorder #: Jamar #7
 Tube Layout: L6 Basic
 WB, EB

Station ID:
 Site Code: 88
 Date Start: 01-Nov-05
 Date End: 03-Nov-05

Union St, east of Washington St

Start Time	1 15	16 20	21 25	26 30	31 35	36 40	41 45	46 50	51 55	56 60	61 65	66 70	71 75	76 999	Total
11/01/05	*	*	*	*	*	*	*	*	*	*	*	*	*	*	*
01:00	*	*	*	*	*	*	*	*	*	*	*	*	*	*	*
02:00	*	*	*	*	*	*	*	*	*	*	*	*	*	*	*
03:00	*	*	*	*	*	*	*	*	*	*	*	*	*	*	*
04:00	*	*	*	*	*	*	*	*	*	*	*	*	*	*	*
05:00	*	*	*	*	*	*	*	*	*	*	*	*	*	*	*
06:00	*	*	*	*	*	*	*	*	*	*	*	*	*	*	*
07:00	*	*	*	*	*	*	*	*	*	*	*	*	*	*	*
08:00	*	*	*	*	*	*	*	*	*	*	*	*	*	*	*
09:00	*	*	*	*	*	*	*	*	*	*	*	*	*	*	*
10:00	*	*	*	*	*	*	*	*	*	*	*	*	*	*	*
11:00	*	*	*	*	*	*	*	*	*	*	*	*	*	*	*
12 PM	*	*	*	*	*	*	*	*	*	*	*	*	*	*	*
13:00	*	*	*	*	*	*	*	*	*	*	*	*	*	*	*
14:00	*	*	*	*	*	*	*	*	*	*	*	*	*	*	*
15:00	39	22	12	44	125	71	88	61	27	8	1	1	0	0	499
16:00	41	7	8	36	140	84	104	70	26	6	1	0	0	0	523
17:00	37	6	15	65	120	99	85	60	21	5	0	0	0	0	513
18:00	22	6	7	48	114	51	81	58	20	0	1	0	0	0	408
19:00	11	3	6	13	65	40	42	29	20	2	1	1	0	0	233
20:00	10	6	4	16	37	22	37	34	13	6	0	0	0	0	185
21:00	3	2	2	13	23	17	21	21	6	2	1	0	0	0	111
22:00	7	2	1	9	17	12	24	16	11	2	0	0	0	0	101
23:00	6	3	1	0	14	7	7	6	1	1	0	0	1	0	47
Total	176	57	56	244	655	403	489	355	145	32	5	2	1	0	2620

Old Colony Planning Council
 70 School Street
 Brockton, MA 02301
 508-583-1833

Community: Easton
 Community#_FC: 88_U5
 Recorder #: Jamar #7
 Tube Layout: L6 Basic
 WB, EB

Station ID:
 Site Code: 88
 Date Start: 01-Nov-05
 Date End: 03-Nov-05

Union St, east of Washington St

Start Time	15	20	25	30	35	40	45	50	55	60	65	70	75	999	Total
11/02/05	0	0	0	5	6	3	5	7	5	2	0	0	0	0	33
01:00	0	0	0	2	0	3	3	1	0	0	0	0	0	0	9
02:00	1	0	0	1	2	0	0	0	0	0	0	0	0	0	4
03:00	2	0	1	1	4	1	3	0	0	2	0	0	0	0	14
04:00	1	1	1	4	4	5	0	1	1	1	0	0	0	0	19
05:00	3	0	1	7	26	35	13	13	2	3	0	0	0	0	103
06:00	16	4	1	24	95	56	29	21	16	3	0	0	0	0	265
07:00	18	6	15	47	155	93	46	38	25	6	0	1	0	0	450
08:00	39	12	15	51	188	77	55	34	14	0	1	1	0	0	487
09:00	11	8	9	38	117	73	40	27	18	4	2	0	0	0	347
10:00	19	4	2	34	133	76	72	46	10	5	0	0	0	0	401
11:00	36	17	5	40	103	74	70	46	23	4	1	0	0	0	419
12 PM	18	9	10	52	132	74	70	31	17	0	0	1	0	0	414
13:00	26	10	5	30	125	69	66	55	25	5	1	0	0	0	417
14:00	35	13	14	30	137	76	71	73	24	4	0	0	0	0	477
15:00	48	10	14	49	123	80	91	61	22	4	0	1	0	0	503
16:00	30	3	11	54	128	93	93	73	33	8	1	1	0	0	528
17:00	27	15	5	73	137	68	109	63	26	4	0	0	0	0	527
18:00	26	12	8	45	84	58	79	44	18	4	0	0	0	0	378
19:00	17	6	3	26	65	36	47	42	16	7	0	1	0	1	267
20:00	15	3	2	16	40	34	32	37	11	4	1	0	0	0	195
21:00	9	3	2	10	33	16	37	24	8	3	0	0	0	0	145
22:00	7	0	0	7	14	15	15	15	5	0	1	0	0	0	79
23:00	10	0	2	4	7	6	11	6	7	2	1	0	0	0	56
Total	414	136	126	650	1858	1121	1057	758	326	75	9	6	0	1	6537

Old Colony Planning Council
 70 School Street
 Brockton, MA 02301
 508-583-1833

Community: Easton
 Community#_FC: 88_U5
 Recorder #: Jamar #7
 Tube Layout: L6 Basic
 WB, EB

Station ID:
 Site Code: 88
 Date Start: 01-Nov-05
 Date End: 03-Nov-05

Union St, east of Washington St

Start Time	15	20	25	30	35	40	45	50	55	60	65	70	75	999	Total
11/03/05	5	0	0	1	7	7	4	4	4	1	0	0	0	1	34
01:00	1	0	0	1	2	0	1	0	1	2	0	0	0	0	8
02:00	2	0	0	0	3	0	0	1	2	1	0	0	0	0	9
03:00	0	1	1	1	1	2	2	2	1	0	1	0	0	0	12
04:00	2	0	1	2	4	4	2	1	2	1	0	0	0	0	19
05:00	6	1	0	5	37	14	11	4	3	2	2	0	0	0	85
06:00	16	5	3	21	81	52	33	16	15	2	0	0	0	0	244
07:00	26	9	7	48	171	90	47	38	15	6	2	1	0	0	460
08:00	35	13	15	49	167	81	46	37	21	2	0	0	0	0	466
09:00	22	3	12	36	116	77	47	33	18	4	1	0	0	0	369
10:00	23	6	6	32	104	66	51	33	19	3	3	0	0	0	346
11:00	26	5	6	40	117	63	62	54	24	7	1	0	0	0	405
12 PM	26	8	19	44	114	81	77	51	20	3	0	0	0	1	444
13:00	21	15	3	43	97	65	85	54	19	1	4	0	0	0	407
14:00	22	13	15	35	113	85	86	68	25	2	0	0	0	0	464
15:00	*	*	*	*	*	*	*	*	*	*	*	*	*	*	*
16:00	*	*	*	*	*	*	*	*	*	*	*	*	*	*	*
17:00	*	*	*	*	*	*	*	*	*	*	*	*	*	*	*
18:00	*	*	*	*	*	*	*	*	*	*	*	*	*	*	*
19:00	*	*	*	*	*	*	*	*	*	*	*	*	*	*	*
20:00	*	*	*	*	*	*	*	*	*	*	*	*	*	*	*
21:00	*	*	*	*	*	*	*	*	*	*	*	*	*	*	*
22:00	*	*	*	*	*	*	*	*	*	*	*	*	*	*	*
23:00	*	*	*	*	*	*	*	*	*	*	*	*	*	*	*
Total	233	79	88	358	1134	687	554	396	189	37	14	1	0	2	3772
Grand Total	823	272	270	1252	3647	2211	2100	1509	660	144	28	9	1	3	12929

15th Percentile : 28 MPH
 50th Percentile : 36 MPH
 85th Percentile : 47 MPH
 95th Percentile : 52 MPH

Stats
 Mean Speed(Average) : 36 MPH
 10 MPH Pace Speed : 31-40 MPH
 Number in Pace : 5858
 Percent in Pace : 45.3%
 Number of Vehicles > 30 MPH : 10312
 Percent of Vehicles > 30 MPH : 79.8%

Community: Easton
 Community#_FC: 88_U5
 Recorder #: Jamar #7
 Tube Layout: L6 Basic
 WB

Station ID:
 Site Code: 88
 Date Start: 01-Nov-05
 Date End: 03-Nov-05

Union St, east of Washington St

Start Time	Bikes	Cars & Trailers	2 Axle Long	Buses	2 Axle 6 Tire	3 Axle Single	4 Axle Single	<5 Axl Double	5 Axle Double	>6 Axl Double	<6 Axl Multi	6 Axle Multi	>6 Axl Multi	Total
11/01/05	*	*	*	*	*	*	*	*	*	*	*	*	*	*
01:00	*	*	*	*	*	*	*	*	*	*	*	*	*	*
02:00	*	*	*	*	*	*	*	*	*	*	*	*	*	*
03:00	*	*	*	*	*	*	*	*	*	*	*	*	*	*
04:00	*	*	*	*	*	*	*	*	*	*	*	*	*	*
05:00	*	*	*	*	*	*	*	*	*	*	*	*	*	*
06:00	*	*	*	*	*	*	*	*	*	*	*	*	*	*
07:00	*	*	*	*	*	*	*	*	*	*	*	*	*	*
08:00	*	*	*	*	*	*	*	*	*	*	*	*	*	*
09:00	*	*	*	*	*	*	*	*	*	*	*	*	*	*
10:00	*	*	*	*	*	*	*	*	*	*	*	*	*	*
11:00	*	*	*	*	*	*	*	*	*	*	*	*	*	*
12 PM	*	*	*	*	*	*	*	*	*	*	*	*	*	*
13:00	*	*	*	*	*	*	*	*	*	*	*	*	*	*
14:00	*	*	*	*	*	*	*	*	*	*	*	*	*	*
15:00	6	49	168	2	35	2	0	1	0	0	0	0	0	263
16:00	2	47	206	0	38	2	0	1	0	0	0	0	0	296
17:00	4	45	213	1	28	0	0	1	0	0	0	0	0	292
18:00	3	30	170	1	25	1	0	0	0	0	0	0	0	230
19:00	0	12	111	0	10	0	0	0	0	0	0	0	0	133
20:00	0	19	77	1	14	0	0	0	0	0	0	0	0	111
21:00	0	8	58	0	5	0	0	0	0	0	0	0	0	71
22:00	0	6	48	0	6	0	0	0	0	0	0	0	0	60
23:00	0	4	20	0	3	0	0	0	0	0	0	0	0	27
Total	15	220	1071	5	164	5	0	3	0	0	0	0	0	1483
Percent	1.0%	14.8%	72.2%	0.3%	11.1%	0.3%	0.0%	0.2%	0.0%	0.0%	0.0%	0.0%	0.0%	
AM Peak Vol.														
PM Peak Vol.	15:00 6	15:00 49	17:00 213	15:00 2	16:00 38	15:00 2		15:00 1						16:00 296

Old Colony Planning Council
 70 School Street
 Brockton, MA 02301
 508-583-1833

Community: Easton
 Community#_FC: 88_U5
 Recorder #: Jamar #7
 Tube Layout: L6 Basic
 WB

Station ID:
 Site Code: 88
 Date Start: 01-Nov-05
 Date End: 03-Nov-05

Union St, east of Washington St

Start Time	Bikes	Cars & Trailers	2 Axle Long	Buses	2 Axle 6 Tire	3 Axle Single	4 Axle Single	<5 Axl Double	5 Axle Double	>6 Axl Double	<6 Axl Multi	6 Axle Multi	>6 Axl Multi	Total
11/02/05	0	4	15	0	2	0	0	0	0	0	0	0	0	21
01:00	0	0	6	0	1	0	0	0	0	0	0	0	0	7
02:00	0	0	0	0	0	0	0	0	0	0	0	0	0	0
03:00	0	0	6	0	1	0	0	0	0	0	0	0	0	7
04:00	0	2	4	0	1	0	0	0	0	0	0	0	0	7
05:00	1	4	17	0	11	0	0	0	0	0	0	0	0	33
06:00	2	18	52	1	15	3	0	3	0	0	0	0	0	94
07:00	3	12	114	4	26	3	0	2	0	0	0	0	0	164
08:00	3	26	105	1	28	1	0	1	0	0	0	0	0	165
09:00	1	11	97	3	27	1	0	0	0	0	0	0	0	140
10:00	0	18	138	3	32	0	0	1	0	0	0	0	0	192
11:00	1	31	148	1	33	1	0	1	0	0	0	0	0	216
12 PM	0	27	145	1	26	1	0	0	0	0	0	0	0	200
13:00	1	23	166	2	25	4	0	2	0	0	0	0	0	223
14:00	3	33	169	4	40	1	0	2	0	0	0	0	0	252
15:00	1	48	195	0	32	6	0	2	0	0	0	0	0	284
16:00	2	28	209	0	29	2	0	3	0	0	0	0	0	273
17:00	1	32	204	2	33	2	0	0	0	0	0	0	0	274
18:00	1	34	166	1	21	1	0	1	0	0	0	0	0	225
19:00	2	18	114	1	20	1	0	0	0	0	0	0	0	156
20:00	0	20	95	0	13	1	0	0	0	0	0	0	0	129
21:00	0	14	70	0	12	0	0	0	0	0	0	0	0	96
22:00	0	12	31	0	1	0	0	0	0	0	0	0	0	44
23:00	0	6	26	0	2	0	0	0	0	0	0	0	0	34
Total	22	421	2292	24	431	28	0	18	0	0	0	0	0	3236
Percent	0.7%	13.0%	70.8%	0.7%	13.3%	0.9%	0.0%	0.6%	0.0%	0.0%	0.0%	0.0%	0.0%	
AM Peak	07:00	11:00	11:00	07:00	11:00	06:00		06:00						11:00
Vol.	3	31	148	4	33	3		3						216
PM Peak	14:00	15:00	16:00	14:00	14:00	15:00		16:00						15:00
Vol.	3	48	209	4	40	6		3						284

Old Colony Planning Council
 70 School Street
 Brockton, MA 02301
 508-583-1833

Community: Easton
 Community#_FC: 88_U5
 Recorder #: Jamar #7
 Tube Layout: L6 Basic
 WB

Station ID:
 Site Code: 88
 Date Start: 01-Nov-05
 Date End: 03-Nov-05

Union St, east of Washington St

Start Time	Bikes	Cars & Trailers	2 Axle Long	Buses	2 Axle 6 Tire	3 Axle Single	4 Axle Single	<5 Axl Double	5 Axle Double	>6 Axl Double	<6 Axl Multi	6 Axle Multi	>6 Axl Multi	Total
11/03/05	0	2	18	0	3	0	0	0	0	0	0	0	0	23
01:00	0	0	3	0	1	0	0	0	0	0	0	0	0	4
02:00	0	1	4	0	0	0	0	0	0	0	0	0	0	5
03:00	0	1	3	0	1	0	0	0	0	0	0	0	0	5
04:00	0	0	5	0	2	0	0	0	0	0	0	0	0	7
05:00	1	1	17	0	0	0	0	0	0	0	0	0	0	19
06:00	0	11	54	0	21	1	0	0	0	0	0	0	0	87
07:00	0	14	101	3	33	1	0	2	0	0	0	0	0	154
08:00	3	27	113	1	25	1	0	0	0	0	0	0	0	170
09:00	0	21	106	0	22	0	0	1	0	0	0	0	0	150
10:00	2	20	116	2	26	0	0	0	0	0	0	0	0	166
11:00	1	27	147	0	26	0	0	2	0	0	0	0	0	203
12 PM	2	33	152	2	21	1	0	1	0	0	0	0	0	212
13:00	2	32	157	1	27	2	0	0	0	0	0	0	0	221
14:00	3	38	164	3	35	2	0	2	0	0	0	0	0	247
15:00	*	*	*	*	*	*	*	*	*	*	*	*	*	*
16:00	*	*	*	*	*	*	*	*	*	*	*	*	*	*
17:00	*	*	*	*	*	*	*	*	*	*	*	*	*	*
18:00	*	*	*	*	*	*	*	*	*	*	*	*	*	*
19:00	*	*	*	*	*	*	*	*	*	*	*	*	*	*
20:00	*	*	*	*	*	*	*	*	*	*	*	*	*	*
21:00	*	*	*	*	*	*	*	*	*	*	*	*	*	*
22:00	*	*	*	*	*	*	*	*	*	*	*	*	*	*
23:00	*	*	*	*	*	*	*	*	*	*	*	*	*	*
Total	14	228	1160	12	243	8	0	8	0	0	0	0	0	1673
Percent	0.8%	13.6%	69.3%	0.7%	14.5%	0.5%	0.0%	0.5%	0.0%	0.0%	0.0%	0.0%	0.0%	
AM Peak	08:00	08:00	11:00	07:00	07:00	06:00		07:00						11:00
Vol.	3	27	147	3	33	1		2						203
PM Peak	14:00	14:00	14:00	14:00	14:00	13:00		14:00						14:00
Vol.	3	38	164	3	35	2		2						247
Grand Total	51	869	4523	41	838	41	0	29	0	0	0	0	0	6392
Percent	0.8%	13.6%	70.8%	0.6%	13.1%	0.6%	0.0%	0.5%	0.0%	0.0%	0.0%	0.0%	0.0%	

Community: Easton
 Community#_FC: 88_U5
 Recorder #: Jamar #7
 Tube Layout: L6 Basic
 EB

Station ID:
 Site Code: 88
 Date Start: 01-Nov-05
 Date End: 03-Nov-05

Union St, east of Washington St

Start Time	Bikes	Cars & Trailers	2 Axle Long	Buses	2 Axle 6 Tire	3 Axle Single	4 Axle Single	<5 Axl Double	5 Axle Double	>6 Axl Double	<6 Axl Multi	6 Axle Multi	>6 Axl Multi	Total
11/01/05	*	*	*	*	*	*	*	*	*	*	*	*	*	*
01:00	*	*	*	*	*	*	*	*	*	*	*	*	*	*
02:00	*	*	*	*	*	*	*	*	*	*	*	*	*	*
03:00	*	*	*	*	*	*	*	*	*	*	*	*	*	*
04:00	*	*	*	*	*	*	*	*	*	*	*	*	*	*
05:00	*	*	*	*	*	*	*	*	*	*	*	*	*	*
06:00	*	*	*	*	*	*	*	*	*	*	*	*	*	*
07:00	*	*	*	*	*	*	*	*	*	*	*	*	*	*
08:00	*	*	*	*	*	*	*	*	*	*	*	*	*	*
09:00	*	*	*	*	*	*	*	*	*	*	*	*	*	*
10:00	*	*	*	*	*	*	*	*	*	*	*	*	*	*
11:00	*	*	*	*	*	*	*	*	*	*	*	*	*	*
12 PM	*	*	*	*	*	*	*	*	*	*	*	*	*	*
13:00	*	*	*	*	*	*	*	*	*	*	*	*	*	*
14:00	*	*	*	*	*	*	*	*	*	*	*	*	*	*
15:00	3	196	29	1	3	2	0	1	0	0	0	0	0	235
16:00	3	195	24	0	2	1	1	0	0	0	0	0	0	226
17:00	2	196	19	0	2	1	0	0	0	0	0	0	0	220
18:00	3	159	13	0	2	0	1	0	0	0	0	0	0	178
19:00	0	85	14	0	1	0	0	0	0	0	0	0	0	100
20:00	0	63	9	0	1	0	0	1	0	0	0	0	0	74
21:00	1	38	1	0	0	0	0	0	0	0	0	0	0	40
22:00	0	35	6	0	0	0	0	0	0	0	0	0	0	41
23:00	0	17	3	0	0	0	0	0	0	0	0	0	0	20
Total	12	984	118	1	11	4	2	2	0	0	0	0	0	1134
Percent	1.1%	86.8%	10.4%	0.1%	1.0%	0.4%	0.2%	0.2%	0.0%	0.0%	0.0%	0.0%	0.0%	
AM Peak Vol.														
PM Peak Vol.	15:00 3	15:00 196	15:00 29	15:00 1	15:00 3	15:00 2	16:00 1	15:00 1						15:00 235

Community: Easton
 Community#_FC: 88_U5
 Recorder #: Jamar #7
 Tube Layout: L6 Basic
 EB

Station ID:
 Site Code: 88
 Date Start: 01-Nov-05
 Date End: 03-Nov-05

Union St, east of Washington St

Start Time	Bikes	Cars & Trailers	2 Axle Long	Buses	2 Axle 6 Tire	3 Axle Single	4 Axle Single	<5 Axl Double	5 Axle Double	>6 Axl Double	<6 Axl Multi	6 Axle Multi	>6 Axl Multi	Total
11/02/05	0	11	1	0	0	0	0	0	0	0	0	0	0	12
01:00	0	1	1	0	0	0	0	0	0	0	0	0	0	2
02:00	0	4	0	0	0	0	0	0	0	0	0	0	0	4
03:00	0	6	1	0	0	0	0	0	0	0	0	0	0	7
04:00	0	12	0	0	0	0	0	0	0	0	0	0	0	12
05:00	0	59	11	0	0	0	0	0	0	0	0	0	0	70
06:00	2	150	17	0	0	1	0	0	0	0	0	0	0	170
07:00	4	254	21	1	5	0	0	0	1	0	0	0	0	286
08:00	2	286	28	1	3	0	0	0	0	1	0	0	0	321
09:00	2	190	14	0	0	0	0	0	1	0	0	0	0	207
10:00	3	187	16	0	4	0	0	0	0	0	0	0	0	210
11:00	0	179	20	0	3	0	0	0	0	0	0	0	0	202
12 PM	1	188	21	0	2	2	0	0	0	0	0	0	0	214
13:00	4	167	16	0	4	1	0	1	0	0	0	0	0	193
14:00	3	194	24	1	2	0	0	0	1	0	0	0	0	225
15:00	0	174	35	1	7	1	0	0	1	0	0	0	0	219
16:00	5	224	23	0	1	2	0	0	0	0	0	0	0	255
17:00	2	225	23	0	2	1	0	0	0	0	0	0	0	253
18:00	1	140	11	0	1	0	0	0	0	0	0	0	0	153
19:00	2	94	12	0	2	0	0	0	0	0	0	0	0	110
20:00	2	59	5	0	0	0	0	0	0	0	0	0	0	66
21:00	0	44	5	0	0	0	0	0	0	0	0	0	0	49
22:00	0	32	3	0	0	0	0	0	0	0	0	0	0	35
23:00	0	17	5	0	0	0	0	0	0	0	0	0	0	22
Total	33	2897	313	4	36	8	0	1	4	1	0	0	0	3297
Percent	1.0%	87.9%	9.5%	0.1%	1.1%	0.2%	0.0%	0.0%	0.1%	0.0%	0.0%	0.0%	0.0%	
AM Peak	07:00	08:00	08:00	07:00	07:00	06:00			07:00	08:00				08:00
Vol.	4	286	28	1	5	1			1	1				321
PM Peak	16:00	17:00	15:00	14:00	15:00	12:00		13:00	14:00					16:00
Vol.	5	225	35	1	7	2		1	1					255

Community: Easton
 Community#_FC: 88_U5
 Recorder #: Jamar #7
 Tube Layout: L6 Basic
 EB

Station ID:
 Site Code: 88
 Date Start: 01-Nov-05
 Date End: 03-Nov-05

Union St, east of Washington St

Start Time	Bikes	Cars & Trailers	2 Axle Long	Buses	2 Axle 6 Tire	3 Axle Single	4 Axle Single	<5 Axl Double	5 Axle Double	>6 Axl Double	<6 Axl Multi	6 Axle Multi	>6 Axl Multi	Total
11/03/05	0	9	2	0	0	0	0	0	0	0	0	0	0	11
01:00	0	4	0	0	0	0	0	0	0	0	0	0	0	4
02:00	0	4	0	0	0	0	0	0	0	0	0	0	0	4
03:00	0	7	0	0	0	0	0	0	0	0	0	0	0	7
04:00	0	10	2	0	0	0	0	0	0	0	0	0	0	12
05:00	0	57	9	0	0	0	0	0	0	0	0	0	0	66
06:00	0	134	20	0	1	1	0	1	0	0	0	0	0	157
07:00	1	271	30	1	1	1	0	1	0	0	0	0	0	306
08:00	3	272	16	1	1	2	0	0	0	0	0	0	0	295
09:00	3	195	15	0	4	1	0	1	0	0	0	0	0	219
10:00	2	161	14	0	2	0	0	0	1	0	0	0	0	180
11:00	2	177	18	0	3	0	0	0	1	0	0	0	0	201
12 PM	3	201	21	0	5	2	0	0	0	0	0	0	0	232
13:00	0	173	10	0	1	2	0	0	0	0	0	0	0	186
14:00	2	186	25	0	3	0	0	0	1	0	0	0	0	217
15:00	*	*	*	*	*	*	*	*	*	*	*	*	*	*
16:00	*	*	*	*	*	*	*	*	*	*	*	*	*	*
17:00	*	*	*	*	*	*	*	*	*	*	*	*	*	*
18:00	*	*	*	*	*	*	*	*	*	*	*	*	*	*
19:00	*	*	*	*	*	*	*	*	*	*	*	*	*	*
20:00	*	*	*	*	*	*	*	*	*	*	*	*	*	*
21:00	*	*	*	*	*	*	*	*	*	*	*	*	*	*
22:00	*	*	*	*	*	*	*	*	*	*	*	*	*	*
23:00	*	*	*	*	*	*	*	*	*	*	*	*	*	*
Total	16	1861	182	2	21	9	0	3	3	0	0	0	0	2097
Percent	0.8%	88.7%	8.7%	0.1%	1.0%	0.4%	0.0%	0.1%	0.1%	0.0%	0.0%	0.0%	0.0%	
AM Peak	08:00	08:00	07:00	07:00	09:00	08:00		06:00	10:00					07:00
Vol.	3	272	30	1	4	2		1	1					306
PM Peak	12:00	12:00	14:00		12:00	12:00			14:00					12:00
Vol.	3	201	25		5	2			1					232
Grand Total	61	5742	613	7	68	21	2	6	7	1	0	0	0	6528
Percent	0.9%	88.0%	9.4%	0.1%	1.0%	0.3%	0.0%	0.1%	0.1%	0.0%	0.0%	0.0%	0.0%	

Community: Easton
 Community#_FC: 88_U5
 Recorder #: Jamar #7
 Tube Layout: L6 Basic
 WB, EB

Station ID:
 Site Code: 88
 Date Start: 01-Nov-05
 Date End: 03-Nov-05

Union St, east of Washington St

Start Time	Bikes	Cars & Trailers	2 Axle Long	Buses	2 Axle 6 Tire	3 Axle Single	4 Axle Single	<5 Axl Double	5 Axle Double	>6 Axl Double	<6 Axl Multi	6 Axle Multi	>6 Axl Multi	Total
11/01/05	*	*	*	*	*	*	*	*	*	*	*	*	*	*
01:00	*	*	*	*	*	*	*	*	*	*	*	*	*	*
02:00	*	*	*	*	*	*	*	*	*	*	*	*	*	*
03:00	*	*	*	*	*	*	*	*	*	*	*	*	*	*
04:00	*	*	*	*	*	*	*	*	*	*	*	*	*	*
05:00	*	*	*	*	*	*	*	*	*	*	*	*	*	*
06:00	*	*	*	*	*	*	*	*	*	*	*	*	*	*
07:00	*	*	*	*	*	*	*	*	*	*	*	*	*	*
08:00	*	*	*	*	*	*	*	*	*	*	*	*	*	*
09:00	*	*	*	*	*	*	*	*	*	*	*	*	*	*
10:00	*	*	*	*	*	*	*	*	*	*	*	*	*	*
11:00	*	*	*	*	*	*	*	*	*	*	*	*	*	*
12 PM	*	*	*	*	*	*	*	*	*	*	*	*	*	*
13:00	*	*	*	*	*	*	*	*	*	*	*	*	*	*
14:00	*	*	*	*	*	*	*	*	*	*	*	*	*	*
15:00	9	245	197	3	38	4	0	2	0	0	0	0	0	498
16:00	5	242	230	0	40	3	1	1	0	0	0	0	0	522
17:00	6	241	232	1	30	1	0	1	0	0	0	0	0	512
18:00	6	189	183	1	27	1	1	0	0	0	0	0	0	408
19:00	0	97	125	0	11	0	0	0	0	0	0	0	0	233
20:00	0	82	86	1	15	0	0	1	0	0	0	0	0	185
21:00	1	46	59	0	5	0	0	0	0	0	0	0	0	111
22:00	0	41	54	0	6	0	0	0	0	0	0	0	0	101
23:00	0	21	23	0	3	0	0	0	0	0	0	0	0	47
Total	27	1204	1189	6	175	9	2	5	0	0	0	0	0	2617
Percent	1.0%	46.0%	45.4%	0.2%	6.7%	0.3%	0.1%	0.2%	0.0%	0.0%	0.0%	0.0%	0.0%	
AM Peak Vol.														
PM Peak Vol.	15:00 9	15:00 245	17:00 232	15:00 3	16:00 40	15:00 4	16:00 1	15:00 2						16:00 522

Old Colony Planning Council
 70 School Street
 Brockton, MA 02301
 508-583-1833

Community: Easton
 Community#_FC: 88_U5
 Recorder #: Jamar #7
 Tube Layout: L6 Basic
 WB, EB

Station ID:
 Site Code: 88
 Date Start: 01-Nov-05
 Date End: 03-Nov-05

Union St, east of Washington St

Start Time	Bikes	Cars & Trailers	2 Axle Long	Buses	2 Axle 6 Tire	3 Axle Single	4 Axle Single	<5 Axl Double	5 Axle Double	>6 Axl Double	<6 Axl Multi	6 Axle Multi	>6 Axl Multi	Total
11/02/05	0	15	16	0	2	0	0	0	0	0	0	0	0	33
01:00	0	1	7	0	1	0	0	0	0	0	0	0	0	9
02:00	0	4	0	0	0	0	0	0	0	0	0	0	0	4
03:00	0	6	7	0	1	0	0	0	0	0	0	0	0	14
04:00	0	14	4	0	1	0	0	0	0	0	0	0	0	19
05:00	1	63	28	0	11	0	0	0	0	0	0	0	0	103
06:00	4	168	69	1	15	4	0	3	0	0	0	0	0	264
07:00	7	266	135	5	31	3	0	2	1	0	0	0	0	450
08:00	5	312	133	2	31	1	0	1	0	1	0	0	0	486
09:00	3	201	111	3	27	1	0	0	1	0	0	0	0	347
10:00	3	205	154	3	36	0	0	1	0	0	0	0	0	402
11:00	1	210	168	1	36	1	0	1	0	0	0	0	0	418
12 PM	1	215	166	1	28	3	0	0	0	0	0	0	0	414
13:00	5	190	182	2	29	5	0	3	0	0	0	0	0	416
14:00	6	227	193	5	42	1	0	2	1	0	0	0	0	477
15:00	1	222	230	1	39	7	0	2	1	0	0	0	0	503
16:00	7	252	232	0	30	4	0	3	0	0	0	0	0	528
17:00	3	257	227	2	35	3	0	0	0	0	0	0	0	527
18:00	2	174	177	1	22	1	0	1	0	0	0	0	0	378
19:00	4	112	126	1	22	1	0	0	0	0	0	0	0	266
20:00	2	79	100	0	13	1	0	0	0	0	0	0	0	195
21:00	0	58	75	0	12	0	0	0	0	0	0	0	0	145
22:00	0	44	34	0	1	0	0	0	0	0	0	0	0	79
23:00	0	23	31	0	2	0	0	0	0	0	0	0	0	56
Total	55	3318	2605	28	467	36	0	19	4	1	0	0	0	6533
Percent	0.8%	50.8%	39.9%	0.4%	7.1%	0.6%	0.0%	0.3%	0.1%	0.0%	0.0%	0.0%	0.0%	
AM Peak	07:00	08:00	11:00	07:00	10:00	06:00		06:00	07:00	08:00				08:00
Vol.	7	312	168	5	36	4		3	1	1				486
PM Peak	16:00	17:00	16:00	14:00	14:00	15:00		13:00	14:00					16:00
Vol.	7	257	232	5	42	7		3	1					528

Old Colony Planning Council
 70 School Street
 Brockton, MA 02301
 508-583-1833

Community: Easton
 Community#_FC: 88_U5
 Recorder #: Jamar #7
 Tube Layout: L6 Basic
 WB, EB

Station ID:
 Site Code: 88
 Date Start: 01-Nov-05
 Date End: 03-Nov-05

Union St, east of Washington St

Start Time	Bikes	Cars & Trailers	2 Axle Long	Buses	2 Axle 6 Tire	3 Axle Single	4 Axle Single	<5 Axl Double	5 Axle Double	>6 Axl Double	<6 Axl Multi	6 Axle Multi	>6 Axl Multi	Total
11/03/05	0	11	20	0	3	0	0	0	0	0	0	0	0	34
01:00	0	4	3	0	1	0	0	0	0	0	0	0	0	8
02:00	0	5	4	0	0	0	0	0	0	0	0	0	0	9
03:00	0	8	3	0	1	0	0	0	0	0	0	0	0	12
04:00	0	10	7	0	2	0	0	0	0	0	0	0	0	19
05:00	1	58	26	0	0	0	0	0	0	0	0	0	0	85
06:00	0	145	74	0	22	2	0	1	0	0	0	0	0	244
07:00	1	285	131	4	34	2	0	3	0	0	0	0	0	460
08:00	6	299	129	2	26	3	0	0	0	0	0	0	0	465
09:00	3	216	121	0	26	1	0	2	0	0	0	0	0	369
10:00	4	181	130	2	28	0	0	0	1	0	0	0	0	346
11:00	3	204	165	0	29	0	0	2	1	0	0	0	0	404
12 PM	5	234	173	2	26	3	0	1	0	0	0	0	0	444
13:00	2	205	167	1	28	4	0	0	0	0	0	0	0	407
14:00	5	224	189	3	38	2	0	2	1	0	0	0	0	464
15:00	*	*	*	*	*	*	*	*	*	*	*	*	*	*
16:00	*	*	*	*	*	*	*	*	*	*	*	*	*	*
17:00	*	*	*	*	*	*	*	*	*	*	*	*	*	*
18:00	*	*	*	*	*	*	*	*	*	*	*	*	*	*
19:00	*	*	*	*	*	*	*	*	*	*	*	*	*	*
20:00	*	*	*	*	*	*	*	*	*	*	*	*	*	*
21:00	*	*	*	*	*	*	*	*	*	*	*	*	*	*
22:00	*	*	*	*	*	*	*	*	*	*	*	*	*	*
23:00	*	*	*	*	*	*	*	*	*	*	*	*	*	*
Total	30	2089	1342	14	264	17	0	11	3	0	0	0	0	3770
Percent	0.8%	55.4%	35.6%	0.4%	7.0%	0.5%	0.0%	0.3%	0.1%	0.0%	0.0%	0.0%	0.0%	
AM Peak	08:00	08:00	11:00	07:00	07:00	08:00		07:00	10:00					08:00
Vol.	6	299	165	4	34	3		3	1					465
PM Peak	12:00	12:00	14:00	14:00	14:00	13:00		14:00	14:00					14:00
Vol.	5	234	189	3	38	4		2	1					464
Grand Total	112	6611	5136	48	906	62	2	35	7	1	0	0	0	12920
Percent	0.9%	51.2%	39.8%	0.4%	7.0%	0.5%	0.0%	0.3%	0.1%	0.0%	0.0%	0.0%	0.0%	

Old Colony Planning Council

70 School Street

Brockton, MA 02301

508-583-1833

Community: Easton
 Date: 10/04/2005
 Board #: DB-400 (1)
 Staff: RG

File Name : 88_Washington&Union_AM

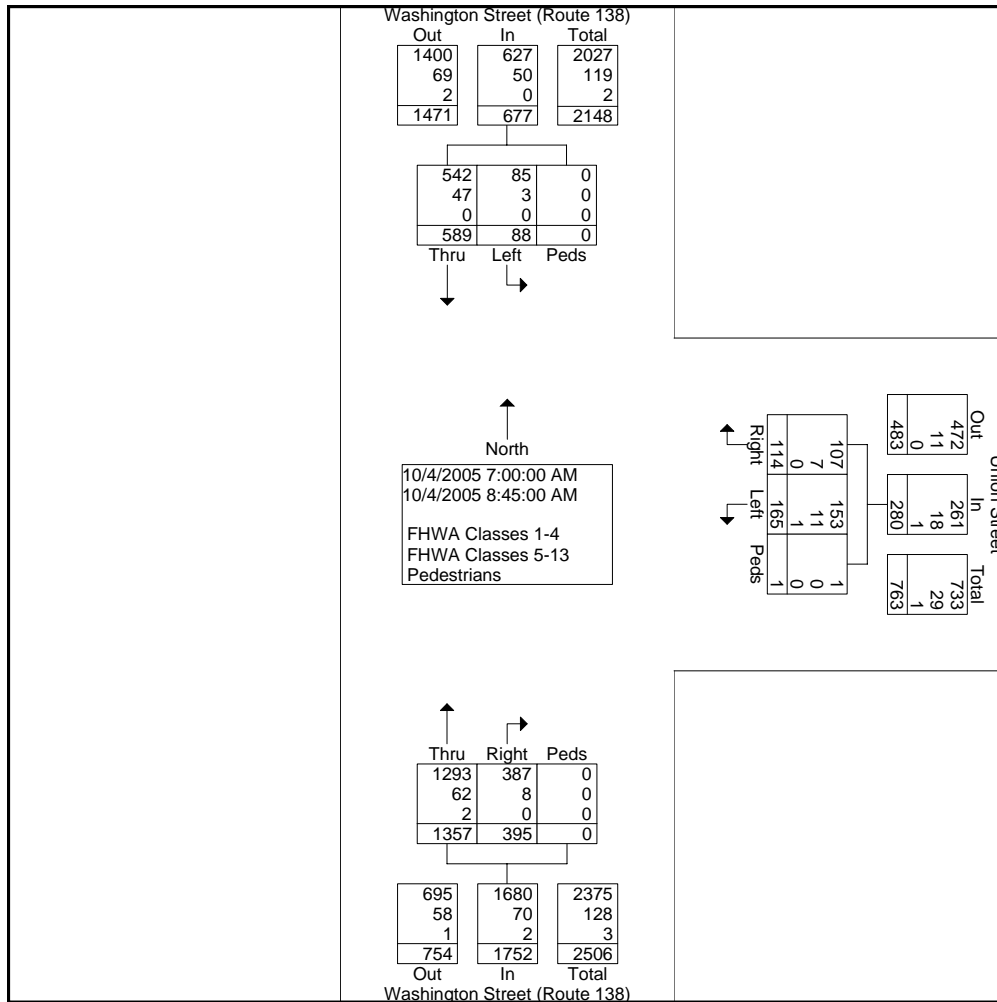
Site Code : 00000088

Start Date : 10/4/2005

Page No : 1

Groups Printed- FHWA Classes 1-4 - FHWA Classes 5-13 - Pedestrians

Start Time	Washington Street (Route 138) Southbound					Union Street Westbound					Washington Street (Route 138) Northbound					Int. Total
	Left	Thru	Right	Peds	App-Total	Left	Thru	Right	Peds	App-Total	Left	Thru	Right	Peds	App-Total	
Factor	1.0	1.0	1.0	1.0		1.0	1.0	1.0	1.0		1.0	1.0	1.0	1.0		
07:00 AM	11	65	0	0	76	18	0	22	1	41	0	171	44	0	215	332
07:15 AM	11	55	0	0	66	21	0	15	0	36	0	197	45	0	242	344
07:30 AM	7	91	0	0	98	20	0	15	0	35	0	221	62	0	283	416
07:45 AM	15	72	0	0	87	24	0	17	0	41	0	197	44	0	241	369
Total	44	283	0	0	327	83	0	69	1	153	0	786	195	0	981	1461
08:00 AM	14	68	0	0	82	20	0	16	0	36	0	174	59	0	233	351
08:15 AM	10	93	0	0	103	11	0	15	0	26	0	160	47	0	207	336
08:30 AM	10	69	0	0	79	24	0	7	0	31	0	131	43	0	174	284
08:45 AM	10	76	0	0	86	27	0	7	0	34	0	106	51	0	157	277
Total	44	306	0	0	350	82	0	45	0	127	0	571	200	0	771	1248
Grand Total	88	589	0	0	677	165	0	114	1	280	0	1357	395	0	1752	2709
Apprch %	13.0	87.0	0.0	0.0		58.9	0.0	40.7	0.4		0.0	77.5	22.5	0.0		
Total %	3.2	21.7	0.0	0.0	25.0	6.1	0.0	4.2	0.0	10.3	0.0	50.1	14.6	0.0	64.7	



Old Colony Planning Council

70 School Street

Brockton, MA 02301

508-583-1833

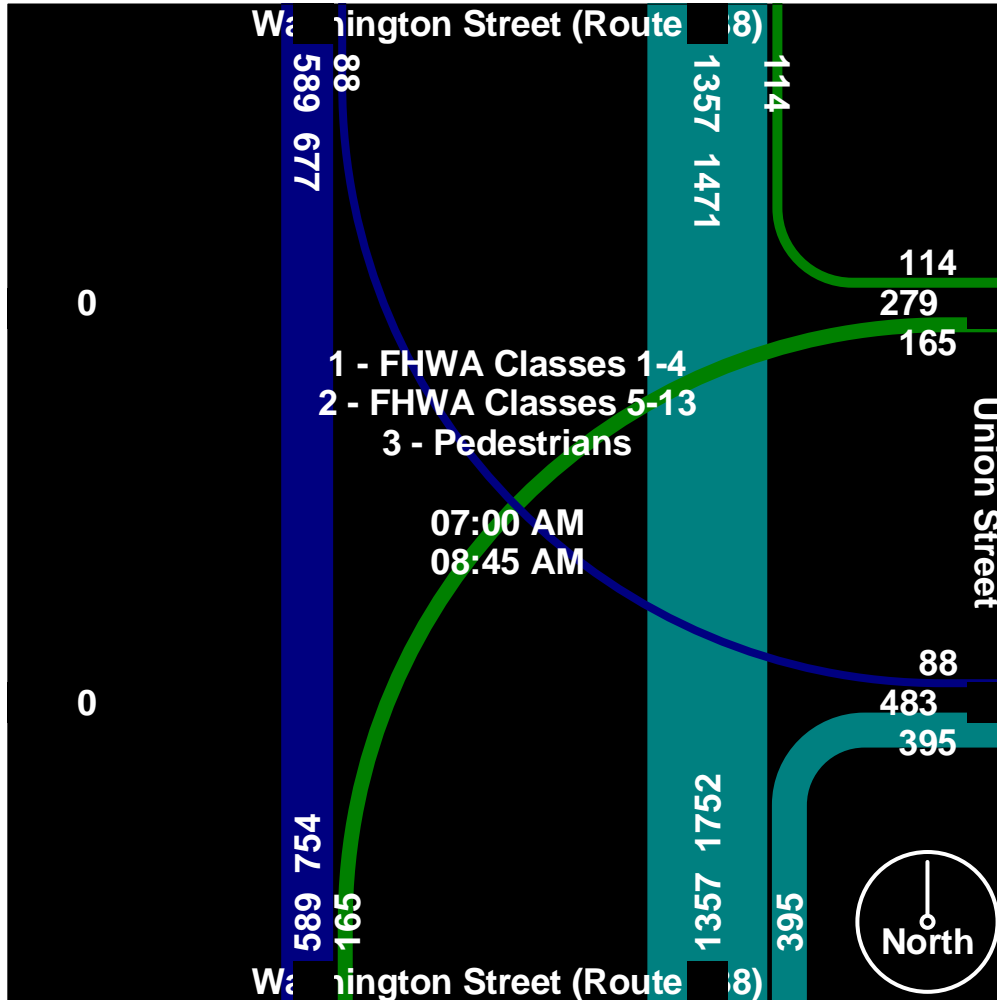
Community: Easton
Date: 10/04/2005
Board #: DB-400 (1)
Staff: RG

File Name : 88_Washington&Union_AM

Site Code : 0000088

Start Date : 10/4/2005

Page No : 2



Old Colony Planning Council

70 School Street

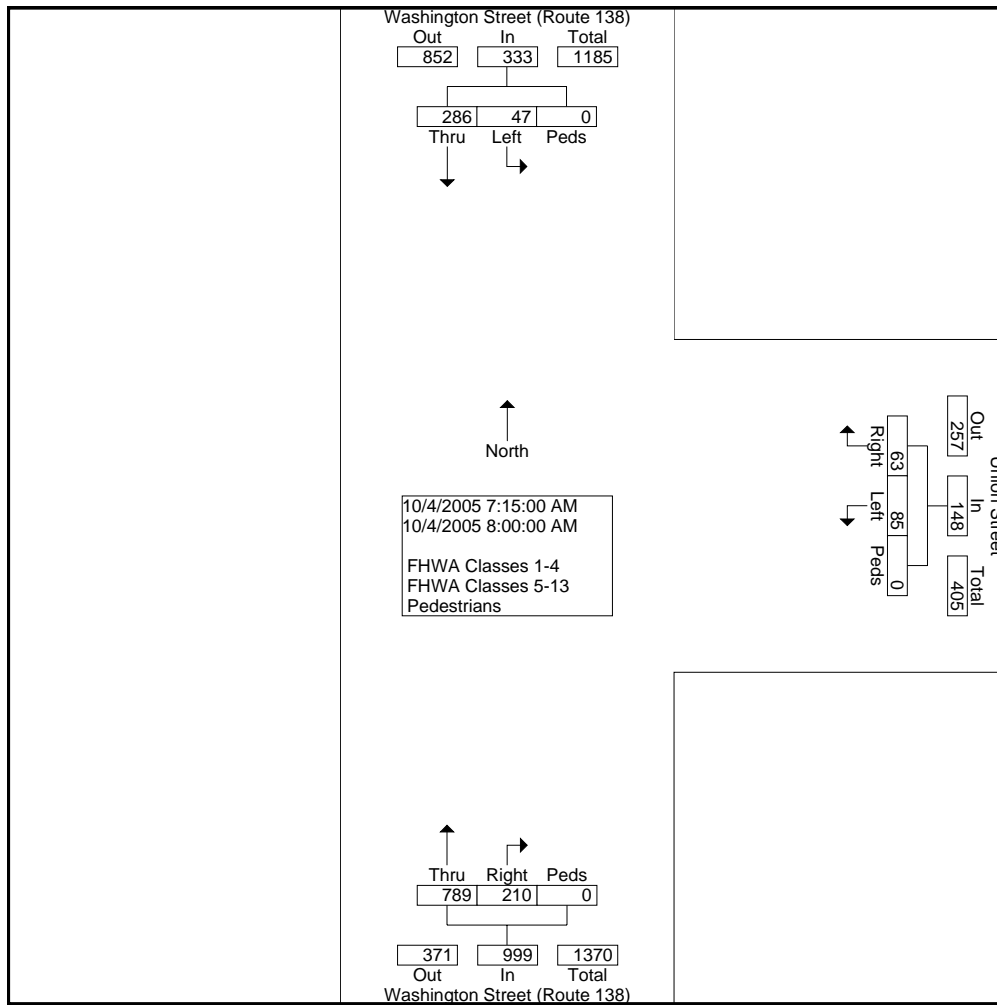
Brockton, MA 02301

508-583-1833

Community: Easton
 Date: 10/04/2005
 Board #: DB-400 (1)
 Staff: RG

File Name : 88_Washington&Union_AM
 Site Code : 00000088
 Start Date : 10/4/2005
 Page No : 3

Start Time	Washington Street (Route 138) Southbound					Union Street Westbound					Washington Street (Route 138) Northbound					Int. Total
	Left	Thru	Right	Peds	App-Total	Left	Thru	Right	Peds	App-Total	Left	Thru	Right	Peds	App-Total	
Peak Hour From 07:00 AM to 08:45 AM - Peak 1 of 1																
Intersection	07:15 AM															
Volume	47	286	0	0	333	85	0	63	0	148	0	789	210	0	999	1480
Percent	14.1	85.9	0.0	0.0		57.4	0.0	42.6	0.0		0.0	79.0	21.0	0.0		
07:30 Volume	7	91	0	0	98	20	0	15	0	35	0	221	62	0	283	416
Peak Factor																0.889
High Int.	07:30 AM					07:45 AM					07:30 AM					
Volume	7	91	0	0	98	24	0	17	0	41	0	221	62	0	283	
Peak Factor	0.849										0.902					



Old Colony Planning Council

70 School Street

Brockton, MA 02301

508-583-1833

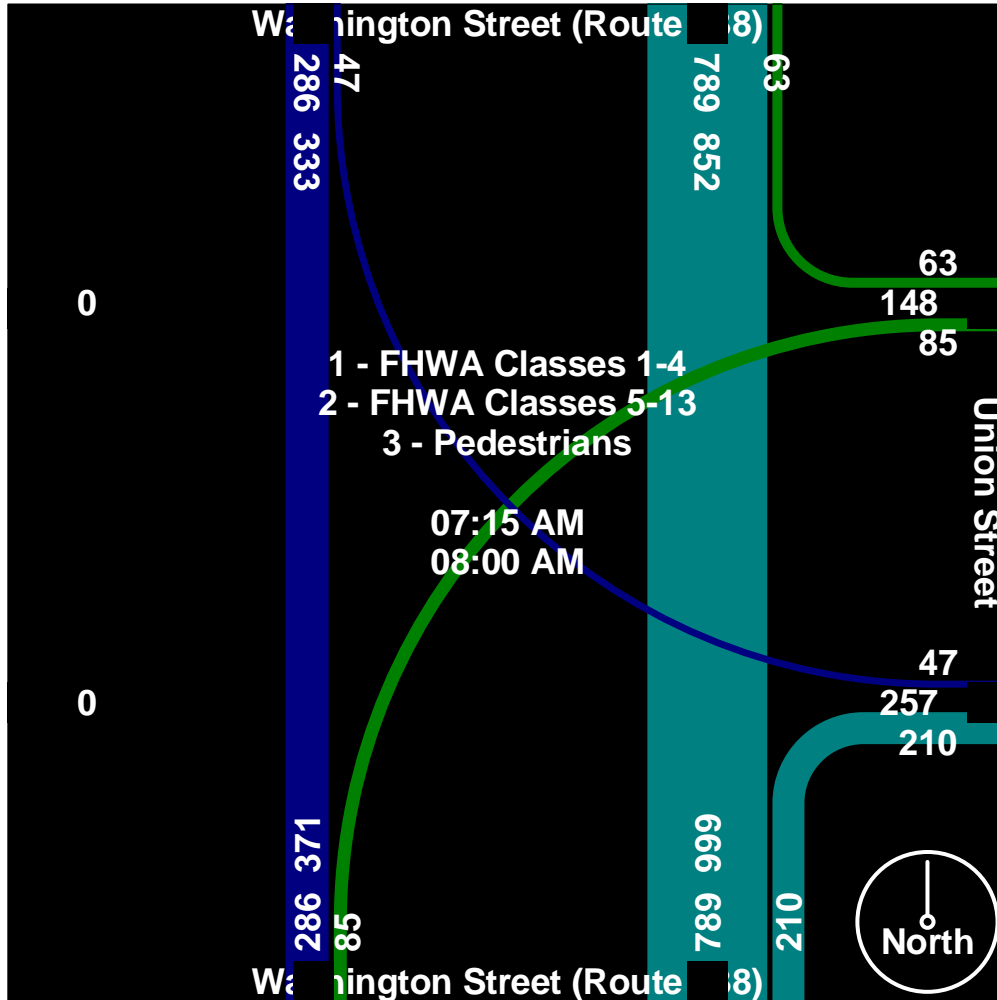
Community: Easton
Date: 10/04/2005
Board #: DB-400 (1)
Staff: RG

File Name : 88_Washington&Union_AM

Site Code : 0000088

Start Date : 10/4/2005

Page No : 4



Old Colony Planning Council

70 School Street

Brockton, MA 02301

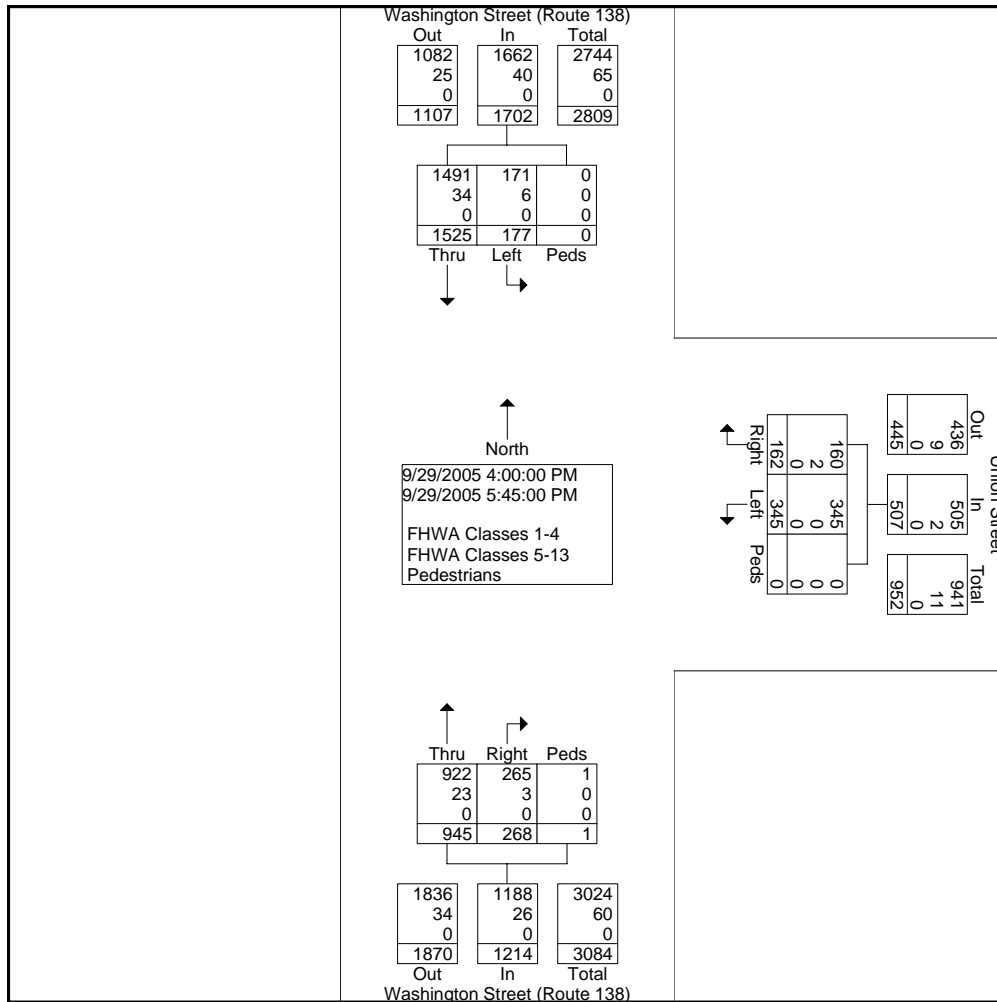
508-583-1833

Community: Easton
 Date: 09/29/2005
 Board #: DB-400 (2)
 Staff: RG

File Name : 88_Washington&Union_PM
 Site Code : 00000088
 Start Date : 9/29/2005
 Page No : 1

Groups Printed- FHWA Classes 1-4 - FHWA Classes 5-13 - Pedestrians

Start Time	Washington Street (Route 138) Southbound					Union Street Westbound					Washington Street (Route 138) Northbound					Int. Total
	Left	Thru	Right	Peds	App-Total	Left	Thru	Right	Peds	App-Total	Left	Thru	Right	Peds	App-Total	
Factor	1.0	1.0	1.0	1.0		1.0	1.0	1.0	1.0		1.0	1.0	1.0	1.0		
04:00 PM	22	173	0	0	195	50	0	21	0	71	0	116	27	0	143	409
04:15 PM	18	171	0	0	189	48	0	24	0	72	0	109	43	0	152	413
04:30 PM	14	157	0	0	171	26	0	28	0	54	0	112	33	0	145	370
04:45 PM	29	207	0	0	236	44	0	14	0	58	0	114	32	0	146	440
Total	83	708	0	0	791	168	0	87	0	255	0	451	135	0	586	1632
05:00 PM	24	187	0	0	211	46	0	22	0	68	0	139	37	0	176	455
05:15 PM	17	196	0	0	213	48	0	20	0	68	0	125	32	1	158	439
05:30 PM	19	210	0	0	229	41	0	14	0	55	0	119	35	0	154	438
05:45 PM	34	224	0	0	258	42	0	19	0	61	0	111	29	0	140	459
Total	94	817	0	0	911	177	0	75	0	252	0	494	133	1	628	1791
Grand Total	177	1525	0	0	1702	345	0	162	0	507	0	945	268	1	1214	3423
Apprch %	10.4	89.6	0.0	0.0		68.0	0.0	32.0	0.0		0.0	77.8	22.1	0.1		
Total %	5.2	44.6	0.0	0.0	49.7	10.1	0.0	4.7	0.0	14.8	0.0	27.6	7.8	0.0	35.5	



Old Colony Planning Council

70 School Street

Brockton, MA 02301

508-583-1833

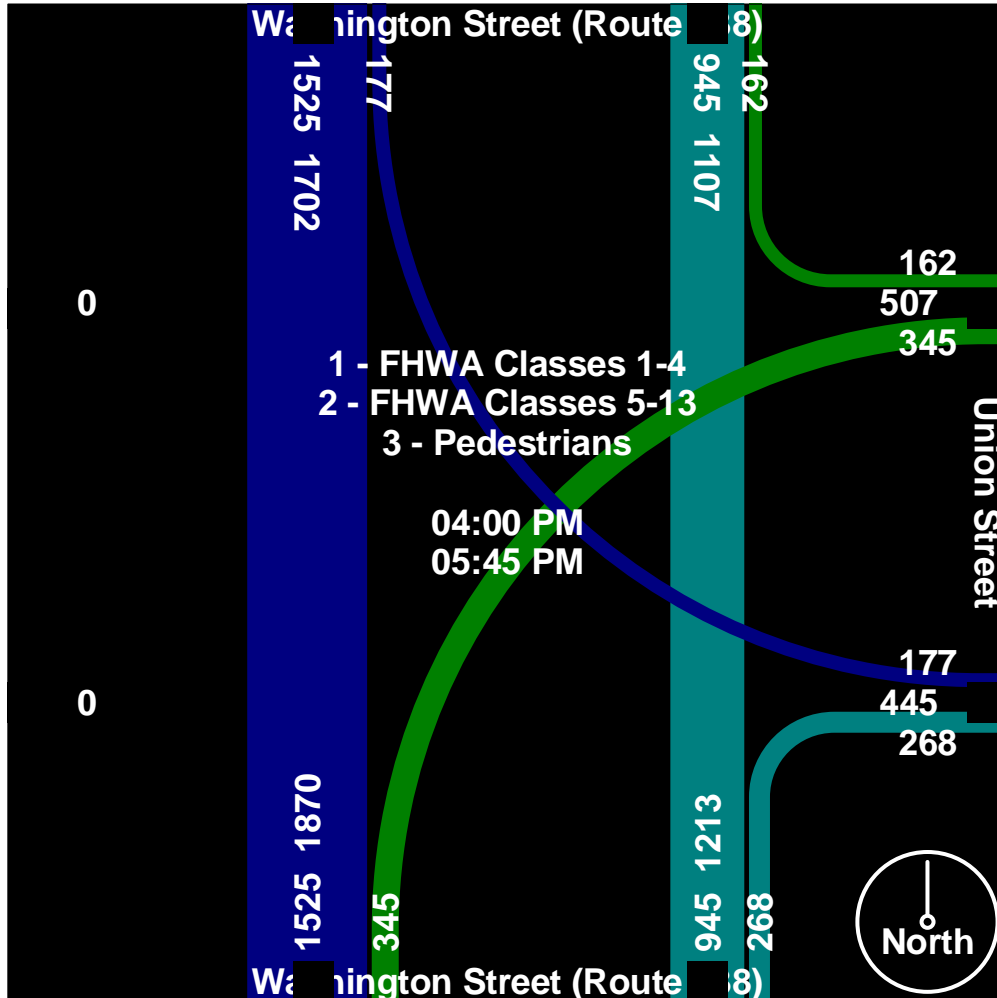
Community: Easton
Date: 09/29/2005
Board #: DB-400 (2)
Staff: RG

File Name : 88_Washington&Union_PM

Site Code : 00000088

Start Date : 9/29/2005

Page No : 2



Old Colony Planning Council

70 School Street

Brockton, MA 02301

508-583-1833

Community: Easton

Date: 09/29/2005

Board #: DB-400 (2)

Staff: RG

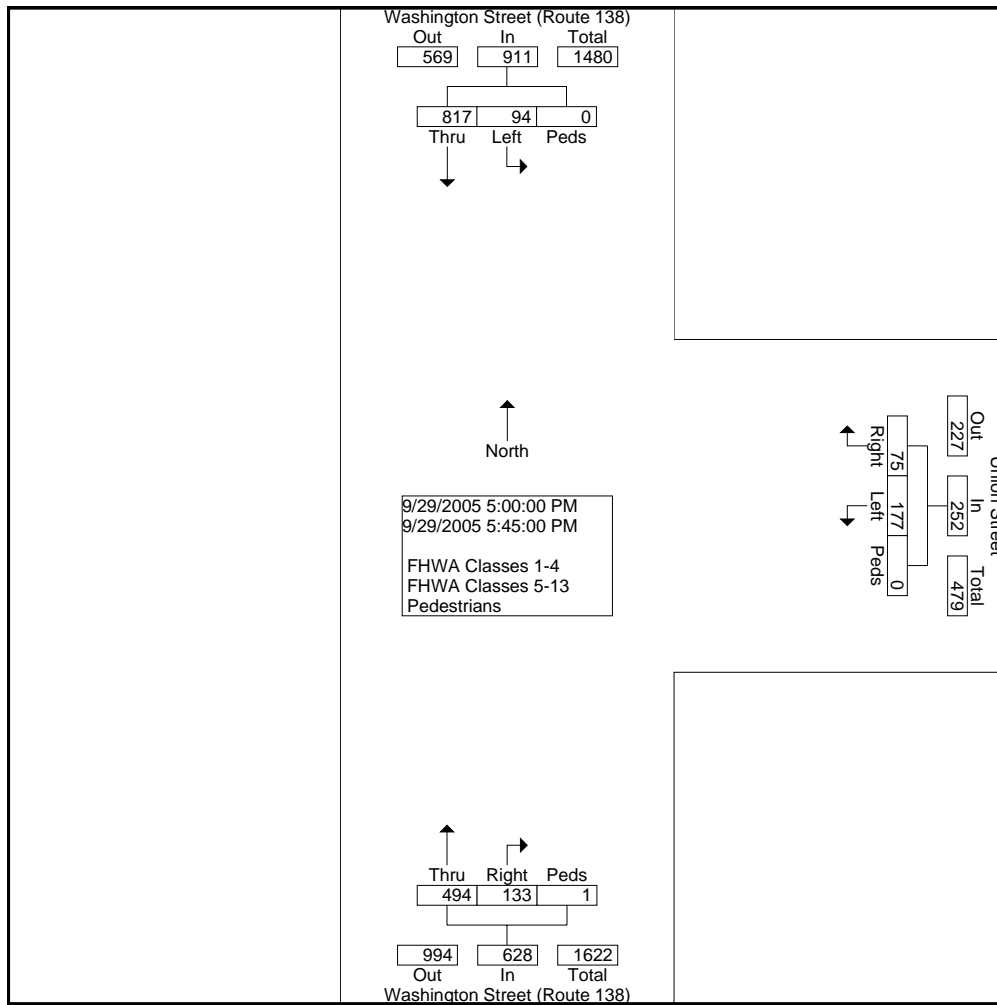
File Name : 88_Washington&Union_PM

Site Code : 00000088

Start Date : 9/29/2005

Page No : 3

Start Time	Washington Street (Route 138) Southbound					Union Street Westbound					Washington Street (Route 138) Northbound					Int. Total
	Left	Thru	Right	Peds	App-Total	Left	Thru	Right	Peds	App-Total	Left	Thru	Right	Peds	App-Total	
Peak Hour From 04:00 PM to 05:45 PM - Peak 1 of 1																
Intersection	05:00 PM															
Volume	94	817	0	0	911	177	0	75	0	252	0	494	133	1	628	1791
Percent	10.3	89.7	0.0	0.0		70.2	0.0	29.8	0.0		0.0	78.7	21.2	0.2		
05:45 Volume	34	224	0	0	258	42	0	19	0	61	0	111	29	0	140	459
Peak Factor																
High Int.	05:45 PM															
Volume	34	224	0	0	258	05:00 PM					05:00 PM					
Peak Factor	0.883					0.926					0.892					



Old Colony Planning Council

70 School Street

Brockton, MA 02301

508-583-1833

Community: Easton
Date: 09/29/2005
Board #: DB-400 (2)
Staff: RG

File Name : 88_Washington&Union_PM

Site Code : 00000088

Start Date : 9/29/2005

Page No : 4

