

OLD COLONY JOINT TRANSPORTATION COMMITTEE

*Advising the Old Colony Metropolitan Planning Organization (MPO)
and the Old Colony Planning Council (OCPC)*

C/o Old Colony Planning Council, 70 School Street, Brockton, MA 02301

Phone: 508-583-1833 / www.oldcolonyplanning.org / [@OldColonyPC](https://twitter.com/OldColonyPC)



Thursday, December 1, 2022, 12:00 P.M. to 1:00 P.M.

Held Virtually via Zoom

Join Zoom Virtual Meeting

<https://zoom.us/join>

Meeting ID: 829 1622 1251

Passcode: 734734

Dial by your location

+1-646-518-9805 or +1-646-558-8656

AGENDA

1. Call to Order and Introductions
2. Public Comments
3. Minutes of November 3, 2022 Meeting
4. Communications - **SHAWN**
5. Reports
 - A. Brockton Area Regional Transit Authority (BAT) - **MIKE**
 - B. Greater Attleboro-Taunton Regional Transit Authority (GATRA) - **TBD**
 - C. South Coast Rail (SCR) Project - **SHAWN**
6. Old Business
 - A. FFY 2023-2027 Transportation Improvement Program (TIP) Implementation - **BILL**
7. New Business
 - A. Development of FFY 2024 – 2028 Transportation Improvement Program (TIP) - **BILL**
 - Universe of Projects and Project Updates
 - B. MassDOT IMPACT Crash Portal - **RAY**
 - Overview and Demonstration
 - C. Old Colony 2050 Long Range Transportation Plan (LRTP) - **BILL**
 - Development Update
8. Other Business
 - A. Community Local Technical Assistance Studies - **BILL**
 - B. Staff Reviews on ENFs, EIRs and NPCs - KYLE
 - C. Regional Concerns and Local Community Transportation Issues
9. Adjournment

The Old Colony MPO fully complies with Title VI of the Civil Rights Act of 1964 and related statutes and regulations in all programs and activities. The Old Colony MPO operates without regard to race, color, or national origin (including limited English proficiency), age, sex, disability, ancestry, ethnicity, gender, gender identity or expression, sexual orientation, religion, creed, veteran's status, or background.

Any person who believes that they or any specific class of persons to be subject to discrimination prohibited by Title VI may by themselves or by a representative file a written complaint with the Old Colony MPO. Complaints are to be filed no later than 180 days from the date of the alleged discrimination. This meeting is accessible to people with disabilities and those with limited English proficiency. Accessibility accommodations and language services will be provided free of charge, upon request, as available. Please contact Mary Waldron at 508-583-1833 for more information.

- If this information is needed in another language, please contact Mary Waldron at 508-583-1833.
- Se esta informação é necessária em outro idioma, entre em contato com Mary Waldron em 508-583-1833.
- Si se necesita esta información en otro idioma, por favor póngase en contacto con Mary Waldron al 508-583-1833.
- Si yo bezwen enfòmasyon sa a nan yon lòt lang, tanpri kontakte Mary Waldron nan 508-583-1833.

The public discussion of the Transportation Improvement Program (TIP) at Old Colony JTC, Old Colony MPO, and transportation meetings satisfies the Program of Projects (POP) public hearing requirements of the Federal Transit Administration (FTA).

December 1, 2022 Old Colony JTC Meeting Agenda Item 1

Call to Order, Accessibility Statement, Title VI Notice of Protection, and Introductions

Summary

Call to order, Introductions, and Accessibility Statement and Title VI Nondiscrimination Statement.

Accessibility Statement and Title VI Nondiscrimination Statement

To be read by the Chair at the start of each meeting:

- “This meeting is accessible to people with disabilities. Microphones or telephones will be used by all speakers. Large- print materials are available upon advance request. If you would like either of these accommodations, please contact Mary Waldron at 508-583-1833.”
- “The Notice of Nondiscrimination Rights and Protections to Beneficiaries with regard to the Federal “Title VI/ Nondiscrimination” Protections and the State Nondiscrimination Protections is posted in this meeting room and is available on the Old Colony Planning Council Website. Please contact Mary Waldron at 508-583-1833 for more information. Thank you.”

December 1, 2022 Old Colony JTC Meeting
Agenda Item 2
Public Comments

Summary

Public comments.

**December 1, 2022 Old Colony JTC Meeting
Agenda Item 3
Minutes of November 3, 2022 Meeting**

Summary

Old Colony JTC to consider approval of November 3, 2022 Old Colony JTC Meeting Minutes.

December 1, 2022 Old Colony JTC Meeting
Agenda Item 4
Communications

Summary

“Try Transit”

Brockton Mayor Robert F. Sullivan and Brockton Area Transit (BAT) Administrator Michael Lambert recently announced that from November 25th through December 31st BAT’s bus and paratransit services would be free thanks, in part, to a grant included in the state budget and awarded by the Massachusetts Department of Transportation. The program is designed to encourage new customers to “Try Transit” by offering no cost trips to shop or dine at local businesses, visit with friends and family, and commute to work during the holiday season.

“We are extremely proud to partner with the Department of Transportation and BAT to provide free holiday service so that our City of Champions will be more accessible to all,” Mayor Robert F. Sullivan said. “We have had great success with free and reduced public transit, including discounted commuter rail fares for Brockton residents, free weekend bus service and discounts for the Cape Flyer to Cape Cod this summer. Increasing public transit use is a top priority as we seek to reduce carbon emissions, improve accessibility, and make it more affordable for residents, businesses, workers and visitors to travel to and from Brockton.”

The “Try Transit” initiative will be supported by the state grant that was awarded to all fifteen of the Commonwealth’s Regional Transit Authorities who worked together to submit a joint application and plan for implementation. In BAT’s service area, all fixed route and ADA paratransit services will be offered at no cost to customers. Exceptions include the planned Rockland microtransit service, Rockland Flex, and local Councils on Aging.

A Climate Mitigation and Adaptation Primer for Planners

December 16, 2022 1:00 PM EST

Every day we hear more and more about climate change and its impacts. As planners, we know we should be doing something about it. But, for many of us, we may just not know what it is all about, what we should be doing, or what to focus on, or where to begin. This session will use the recently published APA Climate Mitigation and Adaptation Planner Advisory Service (PAS) Report to provide an overview of the basics of climate science, climate mitigation, and adaptation. It will introduce how planners can move forward with climate mitigation and adaptation action to help lower greenhouse gas emissions and reduce community risk and vulnerability. It will conclude by providing planners with a climate planning framework, principles for taking climate action, and available tools and resources for moving forward. This webcast is hosted by the APA Sustainable Communities Division.

To register, please visit:

<https://register.gotowebinar.com/register/3414334775506600971>

Old Colony Bicycle and Pedestrian Advisory Committee (Old Colony BPAC) Meeting December 16, 2022 - 1:00 PM EST

Please join the Old Colony Bicycle and Pedestrian Advisory Committee (Old Colony BPAC) in a conversation about bicycle and pedestrian infrastructure and policy initiatives. The Old Colony BPAC is an advisory body to the Old Colony Planning Council on bicycle and pedestrian initiatives. The Old Colony BPAC provides a public forum for members of the public, state and local government and other interested stakeholders to come together and discuss how bicycle and pedestrian transportation infrastructure can be improved to provide greater safety and utility. Join and learn what is happening throughout the Old Colony Planning Council Region and the Commonwealth regarding bicycle and pedestrian initiatives.

To register, please visit:

https://us02web.zoom.us/webinar/register/WN_7h5DREtUTPadK7fQWx_eMQ

Happy Holidays from **bat!**

**ALL BUSES
WILL BE FREE**

November 25th - December 31st

Jou Ferye Kontan nan **bat!**

TOUT OTOBIS YO PRAL GRATIS

Novanm 25th - Desanm 31st

Feliz Feriado de **bat!**

TODOS LOS AUTOBUSES SERÁN GRATIS

25 de Noviembre - 31 de Diciembre

Felices Fiestas de **bat!**

TODOS OS AUTOCARROS SERAO I LIVRES

25 de Noviembre - 31 de Diciembre



ridebat.com

December 1, 2022 Old Colony JTC Meeting
Agenda Item 5A
Brockton Area Transit (BAT)

Summary

Brockton Area Transit to provide report.

December 1, 2022 Old Colony JTC Meeting
Agenda Item 5B
Greater Attleboro-Taunton Regional Transit Authority (GATRA)

Summary

Greater Attleboro-Taunton Regional Transit Authority to provide report.

December 1, 2022 Old Colony JTC Meeting
Agenda Item 5C
South Coast Rail Project

Summary

The South Coast Rail (SCR) project will restore commuter rail service between Boston and southeastern Massachusetts by the end of 2023. Taunton, Fall River, and New Bedford are the only major cities within 50 miles of Boston that do not currently have commuter rail service to Boston. SCR will reconnect this region to jobs and generate economic development.

South Coast Rail consists of two phases:

Phase 1 will provide a one-seat ride by extending the existing Middleborough/Lakeville commuter rail line from Boston to Taunton, Fall River, and New Bedford and it will deliver service to the South Coast by late 2023.

Full Build plans to extend Commuter Rail service to continue travel on the Stoughton branch of the Providence/Stoughton line, connecting to more communities in the region. Doing so would result in reconstructing the Canton Center and Stoughton stations to accommodate two rail lines.

In November 2022, work conducted involved fencing installation in eight communities on Fall River & Middleborough Secondary Lines and New Bedford Main Line; utilizing Cotley Street in Berkley to access right-of-way (ROW) for various project activities; 24-hour track work in Freetown and New Bedford; 24-hour culvert work in Fall River; shoulder closure on Route 140 Southbound in Taunton for curb and sidewalk installation; daytime track work in Berkley; overnight road work and lane closures for crossing work in Taunton; a detour in Fall River for bridge work; and daytime and overnight roadwork on Route 105 in Middleborough and Route 140 in New Bedford.

Additional work done included daytime construction at station sites, layover sites, and along the right-of-way from Middleborough to New Bedford as well as along the right-of-way from Berkley to Fall River. There was also overnight and daytime transportation of soils by truck to designated project sites as well as detours for various project activities.

If anyone is interested in signing up for weekly updates on the South Coast Rail project, please click on the following link to enter an email address:

https://public.govdelivery.com/accounts/MADOT/subscriber/new?topic_id=MADOT_30

December 1, 2022 Old Colony JTC Meeting
Agenda Item 6A
FFY 2023-2027 Transportation Improvement Program (TIP)
Implementation

Summary

The Transportation Improvement Program projects programmed in Year 1 must be ready for advertisement within that year (design, engineering, permits, and approvals, etc. completed).

FFY 2023 PROJECTS:

- DUXBURY – BRIDGE REPLACEMENT ROUTE 3 (PILGRIMS HIGHWAY) NB/SB OVER FRANKLIN STREET
 - 25% Package received by MassDOT (2/22/2022).
 - Design Public Hearing held October 6, 2022.
 - Cost Estimate is \$30,575,483

- STOUGHTON - CORRIDOR IMPROVEMENTS ON ROUTE 138 (607403) AC PHASE 1 OF 2
 - 100% Design Package Received 10/27/2022.
 - Design Public Hearing held February 16, 2022.
 - Cost Estimate for AC Phase 1 is \$9,264,000 (Total cost is \$16,444,496).

- STOUGHTON - INTERSECTION IMPROVEMENTS AND RELATED WORK AT CENTRAL STREET, CANTON STREET AND TOSCA DRIVE (608279)
 - MassDOT comments on the 100% Package returned to the Design Engineer (3/24/2021).
 - Cost Estimate is \$4,242,977.

| |
|---------------------------|
| FFY 2024 PROJECTS: |
|---------------------------|

- BROCKTON - INTERSECTION IMPROVEMENTS AND RELATED WORK AT CENTRE STREET (ROUTE 123), CARY STREET, AND LYMAN STREET (609410)
 - 25% Package Resubmission 1 received by MassDOT (7/9/2021).
 - Cost Estimate is \$3,074,203.

- BROCKTON – CITYWIDE SYSTEMIC COUNTERMEASURES AND SAFE SYSTEMS IMPLEMENTATION (609410)
 - Project is in the preliminary design phase Cost Estimate is \$3,074,203.
 - Cost Estimate is \$4,000,000.

- BROCKTON - ROUTE 123 (CENTRE STREET) AT PLYMOUTH STREET SIGNALIZATION AND GEOMETRIC IMPROVEMENTS (609052)
 - 25% Package received by MassDOT (11/15/2021).
 - Design Engineer Reports Updated Data Collection and Analysis Required for 25% Design (8/26/2022).

- Cost Estimate is \$2,251,087.
- PLYMPTON - BRIDGE REPLACEMENT, WINNETUXET ROAD OVER WINNETUXET RIVER (609435)
 - Project is in the preliminary design phase.
 - Cost Estimate is \$2,062,345.
- STOUGHTON - CORRIDOR IMPROVEMENTS ON ROUTE 138 (607403) AC PHASE 2 OF 2
 - MassDOT comments on the 75% Package returned to the Design Engineer (6/21/2022).
 - Design Public Hearing Scheduled for February 16, 2022.
 - (Total cost is \$16,444,496.

| |
|---------------------------|
| FFY 2025 PROJECTS: |
|---------------------------|

- BROCKTON - INTERSECTION IMPROVEMENTS AT LYMAN STREET/ GROVE STREET/ SUMMER STREET & REPLACEMENT OF GROVE STREET BRIDGE, B-25-005, OVER SALISBURY PLAIN RIVER (607818)
 - 25% Resubmission 1 Package received by MassDOT (12/24/2019).
 - Design Engineer Reports Updated Data Collection and Analysis Required for 25% Design (8/26/2022).
 - Cost Estimate is \$4,536,000.

- EASTON - CORRIDOR IMPROVEMENTS ON ROUTE 138 INCLUDING INTERSECTION IMPROVEMENTS AT ROUTE 138 (WASHINGTON STREET) AND ELM STREET (608195)
 - 25% Resubmission 1 Package received by MassDOT (2/25/2022).
 - Design Public Hearing Held on May 12, 2022.
 - Cost Estimate is \$6,938,302.

| |
|---------------------------|
| FFY 2026 PROJECTS: |
|---------------------------|

- ABINGTON - INTERSECTION IMPROVEMENTS AT HANCOCK STREET AND CHESTNUT STREET (609440)
 - MassDOT comments on the 25% Package returned to the Design Engineer (as of 9/6/2021).
 - Cost Estimate is \$5,374,667.
- AVON - INTERSECTION IMPROVEMENTS AT ROUTE 28, SPRING STREET AND HARRISON BOULEVARD (611979)
 - Project is in the preliminary design phase.
 - The Notice to Proceed (NTP) to begin work on the contract has been issued. (7/14/2021).
 - Cost Estimate is \$4,200,000.
- DUXBURY - SIGNAL INSTALLATION @ ROUTE 3 (NB & SB) RAMPS & ROUTE 3A (TREMONT STREET) (606002)

- Project is in the preliminary design phase.
- Cost Estimate is \$2,688,000.

- HANSON - CORRIDOR IMPROVEMENTS ON ROUTE 14 (MAQUAN STREET), FROM THE PEMBROKE T.L. TO INDIAN HEAD STREET AND RELATED WORK (608506) AC Phase 1 of 2
 - MassDOT comments on the 25% Package returned to the Design Engineer (5/7/2020).
 - Project is in the preliminary design phase.
 - AC Phase 1 is \$5,232,158; AC Phase 2 is \$6,316,184 and will be programmed in FFY 2027 of FFY 2023-2027 TIP (Total cost is \$10,311,020).

| |
|---------------------------|
| FFY 2027 PROJECTS: |
|---------------------------|

- BROCKTON – INTERSECTION IMPROVEMENTS AT CRESCENT STREET (ROUTE 27) / QUINCY STREET / MASSASOIT BOULEVARD (606143)
 - Project is in the preliminary design phase.
 - Cost Estimate is \$6,148,928.

- HANSON - CORRIDOR IMPROVEMENTS ON ROUTE 14 (MAQUAN STREET), FROM THE PEMBROKE T.L. TO INDIAN HEAD STREET AND RELATED WORK (608506) AC Phase 2 of 2
 - MassDOT comments on the 25% Package returned to the Design Engineer (5/7/2020).
 - Project is in the preliminary design phase.
 - AC Phase 1 is \$5,232,158; AC Phase 2 is \$6,316,184 and will be programmed in FFY 2027 of FFY 2023-2027 TIP (Total cost is \$10,311,020).

- DUXBURY – BRIDGHE REPLACEMENT – POWDER POINT AVENUE OVER DUXBURY BAY (612006)
 - Advance Construction in multiple phases in FFYs 2027, 2028, 2029, and 2030.
 - Project is in the preliminary design phase.
 - Cost Estimate is \$157,257,710.

| |
|---|
| CURRENTLY UNPROGRAMMED PROJECTS IN FFY 2023-2027 TIP |
|---|

- ABINGTON - INTERSECTION IMPROVEMENTS, RANDOLPH STREET AND RICHARD A. FITTS DRIVE (ROUTE 139) AT CHESTNUT STREET AND OLD RANDOLPH STREET (612525)
 - Currently not programmed.
 - Project approved by the MassDOT Project Review Committee (PRC) on 10/21/2021.
 - Project is in the preliminary design phase.
 - Cost Estimate is \$3,786,625.

- ABINGTON - INTERSECTION IMPROVEMENTS, ROUTE 18 (BEDFORD STREET) AT ROUTE 123 (BROCKTON AVENUE) (612770)
 - Currently not programmed.
 - Project approved by the MassDOT Project Review Committee (PRC) on 5/12/2022.
 - Project is in the preliminary design phase.
 - Cost Estimate is \$5,387,025

- ABINGTON & BROCKTON - PEDESTRIAN AND BICYCLE IMPROVEMENTS ON ROUTE 123 (609520)
 - Currently not programmed.
 - 25% Package received by MassDOT (7/9/2021).
 - Cost Estimate is \$3,129,363 (\$20,029,176 from 25% Design Submission).

- AVON - CORRIDOR IMPROVEMENTS ON ROUTE 28 (610804)
 - Currently not programmed.
 - Project is in the preliminary design phase.
 - Cost Estimate is \$4,002,001.

- BROCKTON - IMPROVEMENTS ON FOREST AVENUE, FROM WEST STREET TO BREER STREET (612526)
 - Currently not programmed.
 - Project approved by the MassDOT Project Review Committee (PRC) on 10/21/2021.
 - Project is in the preliminary design phase.

- Pre-25% Design Scoping Meeting Held 4/8/2022.
- Cost Estimate is \$8,778,450.

- BROCKTON - INTERSECTION IMPROVEMENTS AT ROUTE 123 (BELMONT STREET), PEARL STREET AND STONEHILL STREET (612262)
 - Currently not programmed.
 - Project is in the preliminary design phase.
 - Cost Estimate is \$ 7,465,375.

- EAST BRIDGEWATER - INTERSECTION IMPROVEMENTS AT BEDFORD STREET (ROUTE 18), WEST STREET (ROUTE 106) AND EAST STREET (611968)
 - Currently not programmed.
 - Project is in the preliminary design phase.
 - Cost Estimate is \$3,500,000.

- EAST BRIDGEWATER - INTERSECTION IMPROVEMENTS AT HIGHLAND STREET AND NORTH BEDFORD STREET (ROUTE 18) (611976)
 - Currently not programmed.
 - Project is in the preliminary design phase.
 - Cost Estimate is \$3,500,000.

- EASTON - RESURFACING AND RELATED WORK ON ROUTE 138 (ROOSEVELT CIRCLE TO STOUGHTON TOWN LINE) (608585)

- Currently not programmed.
 - Project is in the preliminary design phase.
 - Cost Estimate is \$4,025,000.
- EASTON - IMPROVEMENTS ON FOUNDRY STREET (ROUTE 106/123) (612269)
 - Currently not programmed.
 - Project is in the preliminary design phase.
 - Pre-25% Design Meeting held March 1, 2022
 - Cost Estimate is \$ 14,315,773.
- EASTON - RECONSTRUCTION AND RELATED WORK ON ROUTES 138 AND 123, FROM BELMONT STREET TO DEPOT STREET (612617)
 - Currently not programmed.
 - Project is in the preliminary design phase.
 - Cost Estimate is \$13,437,675
- HANOVER – CORRIDOR IMPROVEMENTS ON ROUTE 139 (HANOVER STREET) AT MAIN STREET, CENTER STREET, AND SILVER STREET (612769)
 - Currently not programmed.
 - Project approved by the MassDOT Project Review Committee (PRC) on 5/12/2022.
 - Project is in the preliminary design phase.
 - Cost Estimate is \$6,156,600

- KINGSTON - BRIDGE REPLACEMENT, K-01-014, SMITHS LANE OVER ROUTE 3 (PILGRIM HIGHWAY) (608615)
 - Currently not programmed.
 - Project is in the preliminary design phase.
 - Cost Estimate is \$12,788,000.

- PEMBROKE - INTERSECTION IMPROVEMENTS AT WASHINGTON STREET AND SCHOOSSETT STREET (611978)
 - Currently not programmed.
 - Project is in the preliminary design phase.
 - Cost Estimate is \$2,500,000.

- STOUGHTON - INTERSECTION IMPROVEMENTS AT CANTON STREET (ROUTE 27), SCHOOL STREET AND SUMMER STREET (611981)
 - Currently not programmed.
 - Project is in the preliminary design phase.
 - Cost Estimate is \$2,300,000.

- STOUGHTON - RECONSTRUCTION OF TURNPIKE STREET (607214)
 - MassDOT comments on the 25% Package returned to the Design Engineer (as of 9/7/2021).
 - Project is in the preliminary design phase.
 - Design Public Hearing Held on June 16, 2022.
 - Cost Estimate is \$29,272,890.

**December 1, 2022 Old Colony JTC Meeting
Agenda Item 7A**

**Development of FFY 2024-2028 Transportation Improvement Program
(TIP)**

▪ Universe of Projects and Project Updates

Summary

The development of the FFY 2024-2028 Transportation Improvement Program (TIP) is underway. The TIP serves as a prioritized listing of highway, bridge, and transit projects for implementation during the next five (5) federal fiscal years that reflect the needs of the regional transportation system. In addition, the TIP is fiscally constrained based on expected federal funding, and it contains projects that are consistent with the Long-Range Transportation Plan (LRTP).

ABINGTON

- **ABINGTON - INTERSECTION IMPROVEMENTS AT HANCOCK STREET AND CHESTNUT STREET (609440)**
 - Programmed in FFY 2026.
 - MassDOT comments on the 25% Package returned to the Design Engineer (as of 9/6/2021).
 - Cost Estimate is \$5,374,667.

- ABINGTON & BROCKTON - PEDESTRIAN AND BICYCLE IMPROVEMENTS ON ROUTE 123 (609520)
 - Currently not programmed.
 - 25% Package received by MassDOT (7/9/2021).
 - Cost Estimate is \$20,029,176.

- ABINGTON - INTERSECTION IMPROVEMENTS, RANDOLPH STREET AND RICHARD A. FITTS DRIVE (ROUTE 139) AT CHESTNUT STREET AND OLD RANDOLPH STREET (612525)
 - Currently not programmed.
 - Project approved by the MassDOT Project Review Committee (PRC) on 10/21/2021.
 - Project is in the preliminary design phase.
 - Cost Estimate is \$3,786,625.

- ABINGTON - INTERSECTION IMPROVEMENTS, ROUTE 18 (BEDFORD STREET) AT ROUTE 123 (BROCKTON AVENUE) (612770)
 - Currently not programmed.
 - Project approved by the MassDOT Project Review Committee (PRC) on 5/12/2022.
 - Project is in the preliminary design phase.
 - Cost Estimate is \$5,387,025

- AVON - INTERSECTION IMPROVEMENTS AT ROUTE 28, SPRING STREET AND HARRISON BOULEVARD (611979)
 - Project is in the preliminary design phase.
 - The Notice to Proceed (NTP) to begin work on the contract has been issued. (7/14/2021).
 - Cost Estimate is \$4,200,000.

- AVON - CORRIDOR IMPROVEMENTS ON ROUTE 28 (610804)
 - Currently not programmed.
 - Project is in the preliminary design phase.
 - Cost Estimate is \$4,002,001.

| |
|----------|
| BROCKTON |
|----------|

- BROCKTON - INTERSECTION IMPROVEMENTS AND RELATED WORK AT CENTRE STREET (ROUTE 123), CARY STREET, AND LYMAN STREET (609410)
 - Programmed in FFY 2024.
 - 25% Package Resubmission 1 received by MassDOT (7/9/2021).
 - Cost Estimate is \$3,074,203.

- BROCKTON - ROUTE 123 (CENTRE STREET) AT PLYMOUTH STREET SIGNALIZATION AND GEOMETRIC IMPROVEMENTS (609052)

- Programmed in FFY 2024.
 - 25% Package received by MassDOT (11/15/2021).
 - Design Engineer Reports Updated Data Collection and Analysis Required for 25% Design (8/26/2022).
 - Cost Estimate is \$2,251,087.
-
- BROCKTON - IMPROVEMENTS AND RELATED WORK ON CRESCENT STREET (ROUTE 27), INCLUDING REPLACEMENT OF GROVE STREET BRIDGE, B-25-005, OVER SALISBURY PLAIN RIVER (607818)
 - Programmed in FFY 2025.
 - 25% Resubmission 1 Package received by MassDOT (12/24/2019).
 - Design Engineer Reports Updated Data Collection and Analysis Required for 25% Design (8/26/2022).
 - Cost Estimate is \$4,536,000.
-
- BROCKTON - INTERSECTION IMPROVEMENTS @ CRESCENT STREET (ROUTE 27)/ QUINCY STREET/ MASSASOIT BOULEVARD (606143)
 - Programmed in FFY 2025.
 - Project is in the preliminary design phase.
 - Cost Estimate is \$6,148,928
-
- BROCKTON & ABINGTON - PEDESTRIAN AND BICYCLE IMPROVEMENTS ON ROUTE 123 (609520)

- Currently not programmed.
 - Project is in the preliminary design phase.
 - Cost Estimate is \$3,129,363.
- BROCKTON - INTERSECTION IMPROVEMENTS AT ROUTE 123 (BELMONT STREET), PEARL STREET AND STONEHILL STREET (612262)
 - Currently not programmed.
 - Project is in the preliminary design phase.
 - Cost Estimate is \$ 7,465,375.
- BROCKTON - IMPROVEMENTS ON FOREST AVENUE, FROM WEST STREET TO BREER STREET (612526)
 - Currently not programmed.
 - Project approved by the MassDOT Project Review Committee (PRC) on 10/21/2021.
 - Project is in the preliminary design phase.
 - Pre-25% Design Scoping Meeting Held 4/8/2022.
 - Cost Estimate is \$8,778,450.

| |
|---------|
| DUXBURY |
|---------|

- DUXBURY - SIGNAL INSTALLATION @ ROUTE 3 (NB & SB) RAMPS & ROUTE 3A (TREMONT STREET) (606002)

- Programmed in FFY 2026.
 - Project is in the preliminary design phase.
 - Cost Estimate is \$2,688,000.
- DUXBURY – BRIDGHE REPLACEMENT – POWDER POINT AVENUE OVER DUXBURY BAY (612006)
 - Advance Construction in multiple phases in FFYs 2027, 2028, 2029, and 2030.
 - Project is in the preliminary design phase.
 - Cost Estimate is \$157,257,710.
- DUXBURY- BRIDGE REPLACEMENT, D-14-010 (48H & 48J), ROUTE 3 (PILGRIM HIGHWAY) NB/SB OVER FRANKLIN STREET (605294)
 - Programmed in FFY 2023.
 - Plans, Specifications, and Estimate (PS&E) received by MassDOT (10/4/2022).
 - Cost Estimate is \$33,412,501.

EAST BRIDGEWATER

- EAST BRIDGEWATER - INTERSECTION IMPROVEMENTS AT BEDFORD STREET (ROUTE 18), WEST STREET (ROUTE 106) AND EAST STREET (611968)
 - Currently not programmed.
 - Project is in the preliminary design phase.
 - Cost Estimate is \$3,500,000.

- EAST BRIDGEWATER - INTERSECTION IMPROVEMENTS AT HIGHLAND STREET AND NORTH BEDFORD STREET (ROUTE 18) (611976)
 - Currently not programmed.
 - Project is in the preliminary design phase.
 - Cost Estimate is \$3,500,000.
 -

EASTON

- EASTON - CORRIDOR IMPROVEMENTS ON ROUTE 138 INCLUDING INTERSECTION IMPROVEMENTS AT ROUTE 138 (WASHINGTON STREET) AND ELM STREET (608195)
 - Programmed in FFY 2025.
 - 25% Resubmission 1 Package received by MassDOT (2/25/2022).
 - Design Public Hearing Held on May 12, 2022.
 - Cost Estimate is \$6,938,302.

- EASTON - RESURFACING AND RELATED WORK ON ROUTE 138 (ROOSEVELT CIRCLE TO STOUGHTON TOWN LINE) (608585)
 - Currently not programmed.
 - Project is in the preliminary design phase.
 - Cost Estimate is \$4,025,000.

- EASTON - IMPROVEMENTS ON FOUNDRY STREET (ROUTE 106/123) (612269)
 - Currently not programmed.
 - Project is in the preliminary design phase.
 - Pre-25% Design Meeting held March 1, 2022
 - Cost Estimate is \$ 14,315,773.

- EASTON - RECONSTRUCTION AND RELATED WORK ON ROUTES 138 AND 123, FROM BELMONT STREET TO DEPOT STREET (612617)
 - Currently not programmed.
 - Project is in the preliminary design phase.
 - Cost Estimate is \$13,437,675

HANOVER

- HANOVER – CORRIDOR IMPROVEMENTS ON ROUTE 139 (HANOVER STREET) AT MAIN STREET, CENTER STREET, AND SILVER STREET (612769)
 - Currently not programmed.
 - Project approved by the MassDOT Project Review Committee (PRC) on 5/12/2022.
 - Project is in the preliminary design phase.
 - Cost Estimate is \$6,156,600

HANSON

- HANSON - CORRIDOR IMPROVEMENTS ON ROUTE 14 (MAQUAN STREET), FROM THE PEMBROKE T.L. TO INDIAN HEAD STREET AND RELATED WORK (608506) AC Phase 1 and 2
 - Programmed in FFY 2026 and 2027
 - MassDOT comments on the 25% Package returned to the Design Engineer (5/7/2020).
 - Project is in the preliminary design phase.
 - AC Phase 1 is \$5,232,158; AC Phase 2 is \$6,316,184 and will be programmed in FFY 2027 of FFY 2023-2027 TIP (Total cost is \$10,311,020).

KINGSTON

- KINGSTON - BRIDGE REPLACEMENT, K-01-014, SMITHS LANE OVER ROUTE 3 (PILGRIM HIGHWAY) (608615)
 - Currently not programmed.
 - Project is in the preliminary design phase.
 - Cost Estimate is \$12,788,000.

PLYMPTON

- PLYMPTON - BRIDGE REPLACEMENT, WINNETUXET ROAD OVER WINNETUXET RIVER (609435)
 - Programmed in FFY 2024.
 - Project is in the preliminary design phase.
 - Cost Estimate is \$2,062,345.

STOUGHTON

- STOUGHTON - CORRIDOR IMPROVEMENTS ON ROUTE 138 (607403) AC PHASES 1 AND 2
 - Programmed in FFY 2023 and FFY 2024.
 - 100% Package Received (10/27/2022).
 - Design Public Hearing held February 16, 2022.
 - Total cost is \$16,444,496.

- STOUGHTON - INTERSECTION IMPROVEMENTS AND RELATED WORK AT CENTRAL STREET, CANTON STREET AND TOSCA DRIVE (608279)
 - Programmed in FFY 2023.
 - MassDOT comments on the 100% Package returned to the Design Engineer (3/24/2021).
 - Cost Estimate is \$4,242,977.

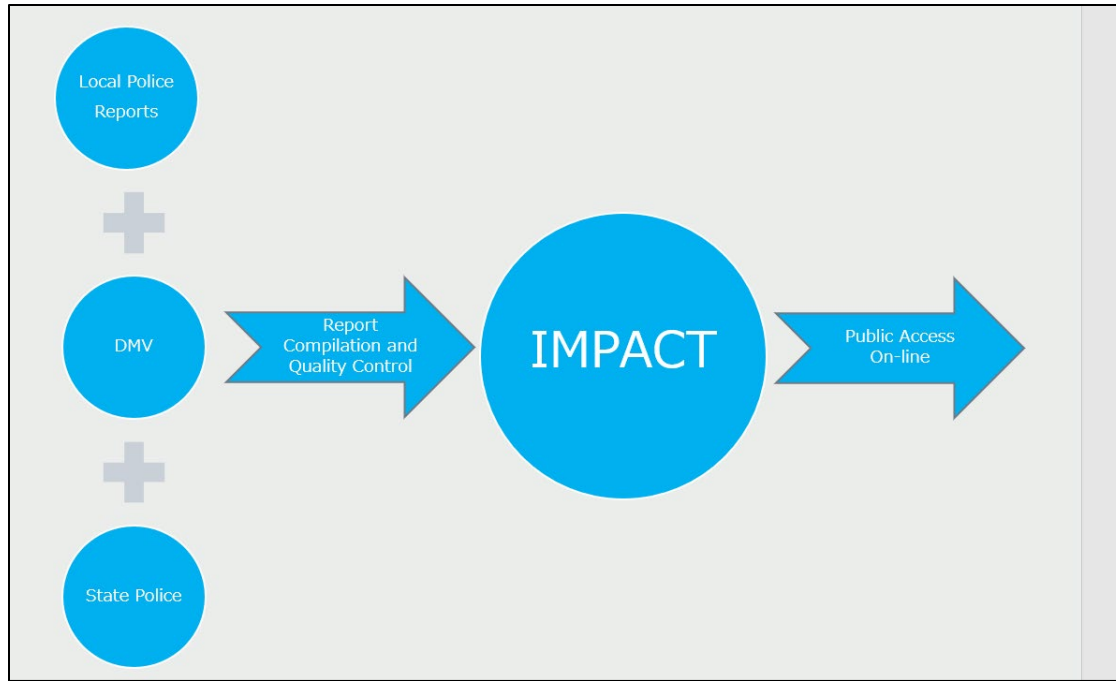
- STOUGHTON - RECONSTRUCTION OF TURNPIKE STREET (607214)
 - MassDOT comments on the 25% Package returned to the Design Engineer (as of 9/7/2021).
 - Project is in the preliminary design phase.
 - Design Public Hearing Held on June 16, 2022.
 - Cost Estimate is \$29,272,890.

- STOUGHTON - CANTON STREET (ROUTE 27) & SCHOOL STREET SIGNALIZATION AND GEOMETRIC IMPROVEMENTS (TBD)
 - Currently not programmed.
 - Project is in the preliminary design phase.
 - Cost Estimate is \$2,300,000.

October 6, 2022 Old Colony MPO Meeting
Agenda Item 7B
MassDOT IMPACT Crash Portal
Overview and Demonstration

Summary

IMPACT is MassDOT's interactive on-line tool containing motor vehicle crash information and crash data for end users for crash analyses. This online website is a public multi-use tool for easy crash data extraction utilizing its dashboard function and built-in reports or more complex data extraction using its advanced query features (via Structured Query Language, SQL) or cross tabulation. It has a map visualization function for easily capturing crash data points within a geographic area as well as the flexibility of data extraction compatible with spreadsheet capabilities (EXCEL compatible xlsx, comma separated values csv, or pdf). OCPC has utilized this on-line tool for Road Safety Audits, corridor studies, and other traffic studies. The December 1st, 2022 JTC presentation on MassDOT's IMPACT will include a brief overview and demonstration regarding OCPC staff utilization of this multi-faceted tool, and how it helps meet OCPC crash data needs in a more efficient, straightforward manner.



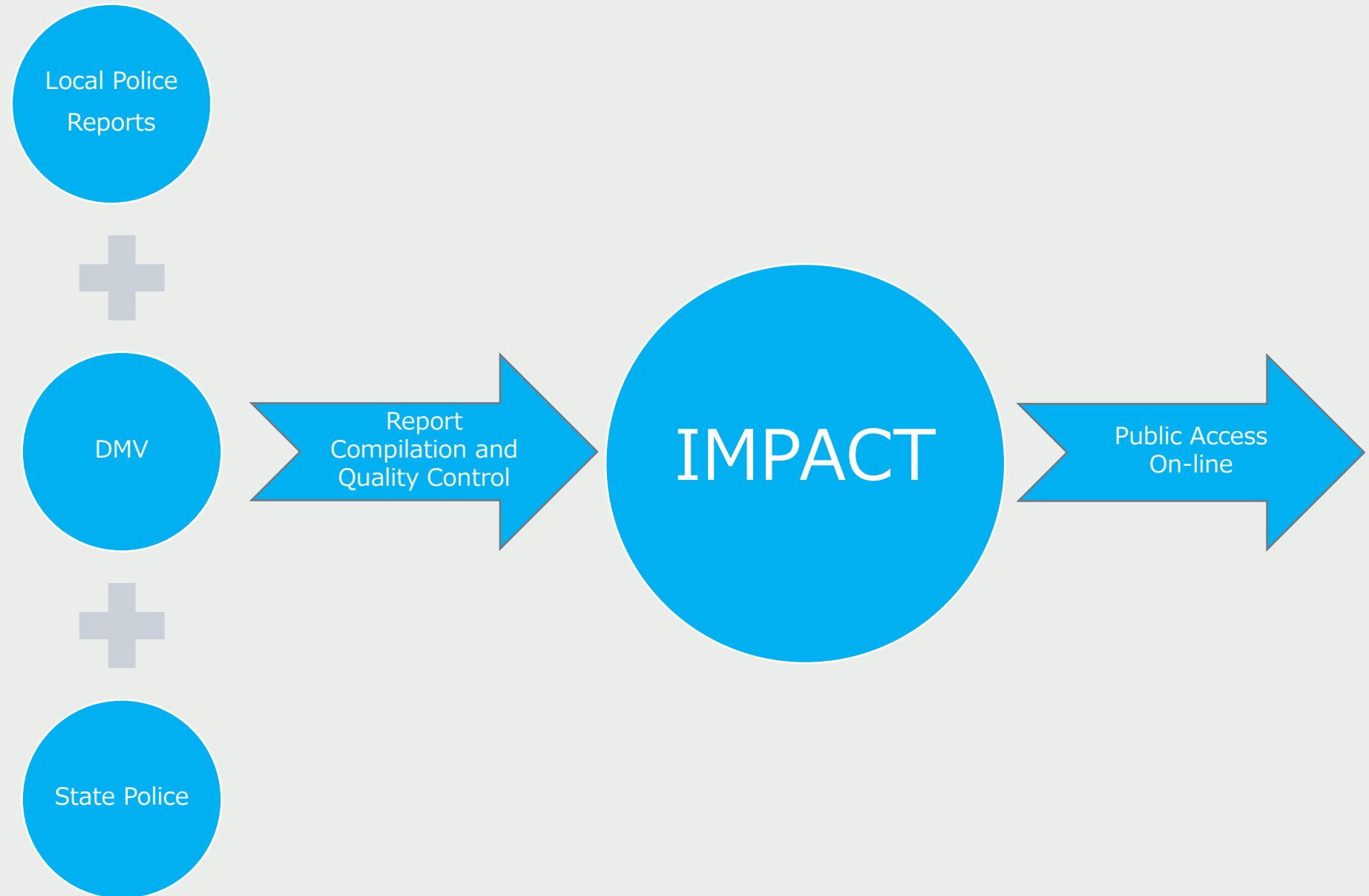


USING MASSDOT IMPACT FOR CRASH ANALYSIS



OLD COLONY
PLANNING COUNCIL

IMPACT:
MassDOT interactive
on-line Website
containing motor
vehicle crash
information for end
users, used in Crash
analyses.



Impact portal link:

[MassDOT: Crash Data Portal \(state.ma.us\)](https://state.ma.us)

IMPACT is designed to encourage public safety initiatives and awareness specific to crash information. Within IMPACT you can engage with crash related data through easy to understand pre-built reports or conduct your own self-driven analysis. Please take the time to explore the various options and find what is right for you.



Interactive Data Dashboards

IMPACT dashboards tell powerful data stories using maps, charts and tables based on complex analyses. These pre-built dashboards allow for interactive analysis and data exploration specific to a given data theme in a range of categories.

[INTERACT](#)



Data Query and Visualization

Using the Data Query and Visualization tool you can conduct simple to sophisticated data queries to generate subsets of the crash data. This may be done at the crash level, the vehicle level or the person level. Once generated you can then visualize the data in three core ways: on charts, on tables, or spatially on a map. Though noted separately, these elements all work in tandem providing the ability to switch between the visualization methods seamlessly.

[EXPLORE](#)



Data Extraction

Using the data extraction service, you can request publicly available data by municipality and date range in several formats. The standard data report request form should be used when trying to obtain datasets of town-wide crash data for specific years. In addition, a link is provided to MassDOT's Open Data Portal for more large-scale data download capabilities where the entire crash data file may be downloaded for each year.

[EXTRACT](#)



Reports

IMPACT provides a suite of pre-built reports for rapid access to cleanly organized information across a spectrum of categories. Some reports are configurable given desired date ranges and all are downloadable in several formats.

[REPORTS](#)



Crash Tabulation and Charting

IMPACT provides this tool to aggregate selected data in a matrix to display two or more variables. The crosstab provides summary data and can be used to summarize the full crash database as well as subsets of the data, based on the user selected variables.

[EXPLORE](#)



Safety Analysis Tools

IMPACT provides several safety analysis tools focused on network screening and diagnosis. Network screening includes both Spot and Systemic mapping. Diagnosis tools include a Crash Tree Maker and a Site Proportions tool.

[EXPLORE](#)

Reported Crashes YTD

Reported Fatalities YTD (FARS)

107,706 379

As of: Mon Nov 21 2022

As of: Mon Nov 21 2022

Reported Pedestrian Crashes YTD

Reported Bicyclist Crashes YTD

1,486

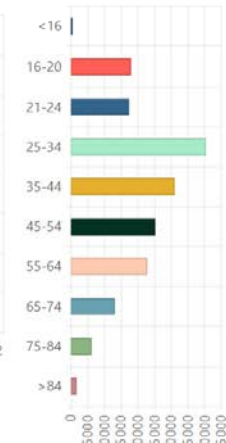
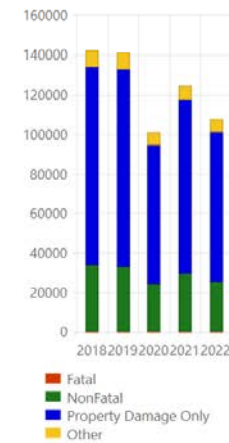
1,154

As of: Mon Nov 21 2022

As of: Mon Nov 21 2022

Reported Crash Severity By Year (CDS)

Reported Ages of Drivers in Crashes YTD



As of: Mon Nov 21 2022

23,367 drivers with ages unknown
As of: Mon Nov 21 2022

Data Extraction, Extract data formatted to use in EXCEL File.

Using the data extraction service, you can request publicly available data by municipality and date range in several formats. The standard data report request form should be used when trying to obtain datasets of town-wide crash data for specific years. In addition, a link is provided to MassDOT's Open Data Portal for more large-scale data download capabilities where the entire crash data file may be downloaded for each year.

Open Data Portal

This service should be used when trying to obtain statewide crash data that may be filtered at the crash, vehicle, or person level that could be downloaded in several formats.

[VIEW](#)

Standard Data Report Request Form (for crash level data)

By completing the fields below, an email should be sent to you within 5-10 minutes with a link to the resulting data. For a small or medium sized town you may be able to use this form for multiple years of data. For multiple towns you can make multiple requests using this form. For statewide data, the Open Data Portal should be used instead.

Email Address * Confirm Email *

Report Start Year * - Report End Year * Municipality *

File Format *
xlsx

[EXTRACT DATA](#)

Contact Us

Address

Massachusetts Department of Transportation - Highway Division
Traffic and Safety Engineering Section
10 Park Plaza, Suite 7210
Boston, MA 02116-3969
[directions](#) →

Phone

Main: 857-368-9649
This line is open M-F 8 AM – 4 PM
[More about this organization](#) →

Online

Email: DOTCrashDataRequest@impact.dot.state.ma.us
Web: <https://www.mass.gov/how-to/request-specialized-crash-data>
[Contact Form](#) →

Crash Query and Visualization

The Query and Visualization Tool is a web application built to provide crash-related data, maps, and charts for the state of Massachusetts. Providing crash data and the ability to analyze this information will encourage public safety initiatives and awareness. It is primarily for this reason that this tool has been made available. Analysis of the crash data is a complex undertaking, one that may require trial and error on the part of users. It is suggested you approach this information as a tool rather than an end in itself and that you cross-check your results with other data sources.

Upon entering the tool, you will first be asked to select your data level of interest (crash level, vehicle level or person level) and will next be asked to select the fields you want to include in your query results.

Enter As Guest

Sign In

By clicking 'Enter As Guest' or 'Sign In' above, I agree to the disclaimer

Disclaimer: MassDOT makes no representation as to the accuracy, adequacy, reliability, availability or completeness of the crash records or the data collected from them and is not responsible for any errors or omissions in such records or data. Under no circumstance will MassDOT have any liability for any loss or damage incurred by any party as a result of the use of the crash records or the data collected from them. Furthermore, the data contained in the web-based crash report tool are not an official record of what transpired in a particular crash or for a particular crash type. If a user is interested in an official copy of a crash report, contact the Registry (<http://www.mass.gov/rmv/>). The City of Boston Police Department may be contacted directly for official copies of crash reports and for crash data pertaining to the City of Boston. In addition, any crash records or data provided for the years after 2019 are subject to change at any time and are not to be considered up-to-date or complete. As such, open years' of crash data are for informational purposes only and should not be used for analysis. The data posted on this website, including crash records and other reports, are collected for the purpose of identifying, evaluating or planning the safety enhancement of potential crash sites, hazardous roadway conditions or railway-highway crossings. Under federal law, this information is not subject to discovery and cannot be admitted into evidence in any federal or state court proceeding or considered for other purposes in any action for damages that involves the sites mentioned in these records (see 23 USC, Section 407).

System Information

The system is currently available.

Supported Browsers



This site is best viewed at a screen resolution of 1600 x 900 or greater.

This application deals with large amounts of data so it is recommended that 64-bit browser versions are used. You may encounter a problem using 32-bit browsers.



Crash Data Level Fields

Select All

Reset

Query Speed Estimator:

slower



faster



Query speed estimates adjusted here are relative to the query parameters defined in the following steps.
The estimate assumes no filters are set. If filters are chosen, a quicker response can be expected.

Select the fields you would like in your output



All Core Crash Details



Extended Crash Details



Limited Crash Details

- | | | | |
|---|---|---|--|
| <input checked="" type="checkbox"/> Crash Number | <input checked="" type="checkbox"/> City Town Name | <input checked="" type="checkbox"/> Crash Date | <input checked="" type="checkbox"/> Crash Severity |
| <input checked="" type="checkbox"/> Crash Status | <input checked="" type="checkbox"/> Crash Time | <input checked="" type="checkbox"/> Crash Year | <input checked="" type="checkbox"/> Max Injury Severity Reported |
| <input checked="" type="checkbox"/> Number of Vehicles | <input checked="" type="checkbox"/> Police Agency Type | <input checked="" type="checkbox"/> State Police Troops | <input checked="" type="checkbox"/> Age of Driver - Youngest Known |
| <input checked="" type="checkbox"/> Age of Driver - Oldest Known | <input checked="" type="checkbox"/> Age of Non-Motorist - Youngest Known | <input checked="" type="checkbox"/> Age of Non-Motorist - Oldest Known | <input checked="" type="checkbox"/> Crash Hour |
| <input checked="" type="checkbox"/> Driver Contributing Circumstances (All Drivers) | <input checked="" type="checkbox"/> Driver Distracted By (All Drivers) | <input checked="" type="checkbox"/> First Harmful Event | <input checked="" type="checkbox"/> Is Geocoded |
| <input checked="" type="checkbox"/> Light Conditions | <input checked="" type="checkbox"/> Manner of Collision | <input checked="" type="checkbox"/> MassDOT District | <input checked="" type="checkbox"/> Non-Motorist Action (All Persons) |
| <input checked="" type="checkbox"/> Non-Motorist Location (All Persons) | <input checked="" type="checkbox"/> Non-Motorist Type (All Persons) | <input checked="" type="checkbox"/> RMV Document Numbers | <input checked="" type="checkbox"/> Road Surface Condition |
| <input checked="" type="checkbox"/> Roadway Junction Type | <input checked="" type="checkbox"/> RPA Abbreviation | <input checked="" type="checkbox"/> Total Fatalities | <input checked="" type="checkbox"/> Total of Non-Fatal Injuries. |
| <input checked="" type="checkbox"/> Traffic Control Device Type | <input checked="" type="checkbox"/> Trafficway Description | <input checked="" type="checkbox"/> Vehicle Actions Prior to Crash (All Vehicles) | <input checked="" type="checkbox"/> Vehicle Configuration (All Vehicles) |
| <input checked="" type="checkbox"/> Vehicle Emergency Use (All Vehicles) | <input checked="" type="checkbox"/> Vehicle Towed From Scene (All Vehicles) | <input checked="" type="checkbox"/> Vehicle Travel Direction (All Vehicles) | <input checked="" type="checkbox"/> Weather Conditions |
| <input checked="" type="checkbox"/> County Name | <input checked="" type="checkbox"/> Crash Report IDs | <input checked="" type="checkbox"/> FMCSA Reportable (All Vehicles) | <input checked="" type="checkbox"/> FMCSA Reportable (Crash) |
| <input checked="" type="checkbox"/> First Harmful Event Location | <input checked="" type="checkbox"/> Geocoding Method | <input checked="" type="checkbox"/> Hit and Run | <input checked="" type="checkbox"/> Locality |
| <input checked="" type="checkbox"/> Most Harmful Event (All Vehicles) | <input checked="" type="checkbox"/> Road Contributing Circumstance | <input checked="" type="checkbox"/> School Bus Related | <input checked="" type="checkbox"/> Speed Limit |
| <input checked="" type="checkbox"/> Traffic Control Device Function | <input checked="" type="checkbox"/> Vehicle Sequence of Events (All Vehicles) | <input checked="" type="checkbox"/> Work Zone Related | <input checked="" type="checkbox"/> X |
| <input checked="" type="checkbox"/> Y | <input checked="" type="checkbox"/> Latitude | <input checked="" type="checkbox"/> Longitude | |



Crash Location Details

Click this icon to include fields that have crash location information in the search results

- | | | | |
|---|--|--|--|
| <input checked="" type="checkbox"/> Street Number | <input checked="" type="checkbox"/> Roadway | <input checked="" type="checkbox"/> Near Intersection Roadway | <input checked="" type="checkbox"/> Distance and Direction From Intersection |
| <input checked="" type="checkbox"/> Milemarker | <input checked="" type="checkbox"/> Milemarker Route | <input checked="" type="checkbox"/> Distance and Direction From Milemarker | <input checked="" type="checkbox"/> Exit Number |
| <input checked="" type="checkbox"/> Exit Route | <input checked="" type="checkbox"/> Distance and Direction From Exit | <input checked="" type="checkbox"/> Landmark | <input checked="" type="checkbox"/> Distance and Direction From Landmark |



Crash Data

Vehicle Data

Person Data



Select Query Type →

Crash Data Level Fields

Select All

Reset

Query Speed Estimator: slower faster

Query speed estimates adjusted here are relative to the query parameters defined in the following steps.
The estimate assumes no filters are set. If filters are chosen, a quicker response can be expected.

Select the fields you would like in your output



Road Characteristics

Click this icon to include fields that can help identify crash patterns based on common physical road characteristics

- AADT-linked RD
- AADT Year-linked RD
- Peak % Single Unit Trucks-linked RD
- Single-Unit Truck and Bus AADT-linked RD
- Peak % Combo Trucks-linked RD
- Combination Truck AADT-linked RD
- Curbs-linked RD
- Jurisdiction-linked RD
- Truck Route-linked RD
- Left Sidewalk Width-linked RD
- Right Sidewalk Width-linked RD
- Left Shoulder Width-linked RD
- Left Shoulder Type-linked RD
- Surface Width-linked RD
- Surface Type-linked RD
- Right Shoulder Width-linked RD
- Right Shoulder Type-linked RD
- Number of Travel Lanes-linked RD
- Opposite Number of Travel Lanes-linked RD
- Median Width-linked RD
- Median Type-linked RD
- Urban Type-linked RD
- Functional Classification-linked RD
- Urbanized Area-linked RD
- Federal Aid Route Number-linked RD
- Facility Type-linked RD
- Street Operation-linked RD
- Access Control-linked RD
- Number of Peak Hour Lanes-linked RD
- Speed Limit-linked RD
- Street Name-linked RD
- From Street Name-linked RD
- To Street Name-linked RD
- City-linked RD
- Structural Condition-linked RD
- Terrain-linked RD
- Urban Location Type-linked RD
- AADT Derivation-linked RD
- AADT Station Number-linked RD
- Opposing Direction Speed Limit-linked RD
- Undivided Left Shoulder Type-linked RD
- Undivided Left Shoulder Width-linked RD
- Truck Exclusion Type-linked RD
- Truck Exclusion Time-linked RD
- Federal Functional Classification-linked RD

Commonwealth of Massachusetts Motor Vehicle Crash Report

11- Light Conditions

- Daylight
- Dawn
- Dusk
- Dark - lighted roadway
- Dark - roadway not lighted
- Dark - unknown roadway lighting
- Other
- Unknown

2,3- Weather Conditions

- Clear
- Cloudy
- Rain
- Snow
- Sleet, Hail, Freezing rain
- Fog, Smog, Smoke
- Severe Crosswinds
- Blowing Sand, Snow
- Other
- Unknown

4- Traffic Control Device Type

- No controls (Skip question 5)
- Stop Signs
- Traffic control signal
- Flashing Traffic control signal
- Yield signs
- School zone signs
- Warning signs
- Railroad crossing device
- Unknown

5- Traffic Device Functioning Code

- Yes
- No

6- Road Surface

- Dry
- Wet
- Snow
- Ice
- Sand, mud, dirt, oil, gravel
- Water (standing, moving)
- Slush
- Other
- Unknown

7- Roadway Intersection Type

- Not at intersection
- Four-way intersection
- T-intersection
- Y-intersection
- On Ramp
- Off Ramp
- Traffic circle
- Five-point or more
- Driveway
- Railway grade crossing
- Unknown

8- Trafficway Description

- Two-way, not divided
- Two-way, divided, unprotected median
- Two-way, divided, positive median barrier
- One-way, not divided
- Unknown

A reportable motor vehicle crash must meet at least one of the following criteria:

- Occurred on a Public Way
- Property Damage of \$1,000 or greater to any Vehicle/Property
- Non-Fatal Personal Injury
- Resulted in a Fatality

Filling out the Form

The following elements must be completed before submitting the form to the RMV:

- Date and Time of the crash
- City/Town where the crash occurred
- Location information of the crash
- License #'s of the operators involved
- Registration #'s of the vehicles involved
- Signature of the Officer

Truck and Bus Information:

Please answer the following questions to determine whether or not this section needs to be completed:

1) Did this crash involve:

- A Truck with a gross vehicle weight more than 10,000 lbs or a Hazmat placard?
- A Bus with seats for more than 8 people including the driver?

If No, then do not fill out this section.

2) If Yes, then did this crash result in:

- Person(s) fatally injured?
- Injured person taken away for medical attention?
- Any vehicle towed from the scene due to damage?

If No, then do not fill out this section.

If Yes to either 1 or 2, then please complete this section.

9- School Bus Related

- Yes
- No

10- Work Zone Related

- Yes
- No

11- Manner of Collision

- Single Vehicle Crash
- Rear-end
- Angle
- Sideswipe, same direction
- Sideswipe, opposite direction
- Head on
- Rear to Rear
- Unknown

12- First Harmful Event Location

- Roadway
- Median
- Roadside
- Shoulder - Paved
- Shoulder - Unpaved
- Shoulder - Travel Lane
- Outside roadway
- Unknown

13- First Harmful Event Collision with

- Motor vehicle in traffic
- Parked motor vehicle
- Pedestrian
- Cyclist
- Animal - Deer
- Animal - Other
- Moped
- Workzone maintenance equipment
- Railway (train, engine)
- Other movable object
- Carb
- Tree
- Utility Pole
- Light Pole or other post/support
- Guardrail
- Median Barrier
- Ditch
- Embankment
- Bridge
- Bridge overhead structure
- Unknown Fixed object

Non-Collision

- Overturn/rollover
- Jackknife
- Other non-collision
- Unknown non-collision

97 Other

- Unknown

14- Non Motorist Type

- Pedestrian
- Cyclist
- Skater
- Train/Trolley Passenger
- Other
- Unknown

15- Non Motorist Action

- Entering or crossing location
- Walking, Running or cycling
- Working
- Pushing vehicle
- Approaching or leaving vehicle
- Working on vehicle
- Standing
- Other
- Unknown

16- Non Motorist Location

- Marked crosswalk at intersection
- At intersection but no crosswalk
- Non-intersection crosswalk
- In roadway
- Not in roadway
- Median (but not on shoulder)
- Island
- Shoulder
- Sidewalk
- Shared-use paths or trails
- Unknown

17- Non Motorist Condition Code

- Apparently Normal
- Physical Impairment
- Emotional (ex: Depression, angry)
- Illness
- Fell asleep, fainted, fatigue, etc.
- Under the influence of alcohol/drugs/med.
- Other
- Unknown

18- License Class

- Class A
- Class B
- Class C
- Class D
- Class M
- Unknown

19- License Restriction Code

- None
- [B] Corrective Lenses
- [C] Mechanical Devices
- [D] Prosthetic Aid
- [E] Automatic Transmission
- [F] Outside Mirror
- [G] Daylight Only
- Employment Use Only
- [I] Limited Use
- Other
- [K] CDL Intrastate Only
- [L] Vehicles w/out air brakes
- [M] Except Class A bus
- [N] Except Class A & B bus
- [O] Except Tractor-Trailer
- Farm Waiver
- Unknown

20- Vehicle configuration code

- Passenger car
- Light truck (Van, mini-van, pick-up, sport utility)
- Motorcycle
- Bus (15 or more passengers)
- Bus (7-15 passengers)
- Single unit truck (2 axles, 6 tires)
- Single unit truck (3 or more axles)
- Truck/trailer
- Truck Tractor (Bobtail)
- Tractor/semi-trailer
- Tractor/doubles
- Tractor/triples
- Unknown heavy truck
- Motor home/recreational
- Other
- Unknown

21- Vehicle Action Prior to Crash

- Travelling Straight ahead
- Slowing or stopped
- Turning right
- Turning left
- Changing lanes
- Entering traffic lane
- Leaving traffic lane
- Making U-turn
- Overtaking/Passing
- Backing
- Parked
- Other
- Unknown

22, 23- Sequence of Events and Most Harmful Codes Collision with:

- Motor vehicle in traffic
- Parked motor vehicle
- Pedestrian
- Cyclist
- Animal - Deer
- Animal - Other
- Moped
- Workzone Maintenance Equipment
- Railway Vehicle (train, engine)
- Other Movable Object
- Unknown Movable Object
- Curb
- Tree
- Utility Pole
- Light Pole or other post/support
- Guardrail
- Median Barrier
- Ditch
- Embankment
- Highway Traffic Sign Post
- Overhead Sign Support
- Fence
- Mailbox
- Impact Attenuator/Crash Cushion
- Bridge
- Bridge overhead structure
- Other Fixed Object (Wall, building, tunnel)
- Unknown Fixed object

24- Driver Contributing Code

- No Improper Driving
- Exceeded authorized speed limit
- Disregarded traffic signs, signals, road markings
- Failed to yield right of way
- Followed too closely
- Made an improper turn
- Driving too fast for conditions
- Wrong side or wrong way
- Failure to keep in proper lane or running off road
- Operating vehicle in erratic, reckless, careless, negligent or aggressive manner
- Swerving or avoiding due to wind, slippery surface, vehicle, object, non-motorist in roadway, etc. . .
- Over-correcting/over-steering
- Glare
- Physical Impairment
- Emotional
- Illness
- History Head/Epilepsy/Fainting
- Visibility Obstructed
- Inattention
- Distracted
- Fatigued/sleep
- Operating defective equipment
- Cellular telephone
- Fax machine
- Computer
- On-board navigation system
- Two-way radio
- Other improper action
- Unknown

25- Underride/Override Code

- None
- Underride
- Override
- Unknown

26- Seating Position

- Front seat - left seat (or motorcycle driver)
- Front seat - middle
- Front seat - right side
- Second seat - left side (or motorcycle passenger)
- Second seat - middle
- Second seat - right side
- Third row - left side (or motorcycle passenger)
- Third row - middle
- Third row - right side
- Sleeper section of cab
- Enclosed passenger area
- Unenclosed passenger area
- Trailing Unit
- Riding on vehicle exterior
- Other
- Unknown

Non-Collision

- Ran off road right (Sequence event only)
- Ran off road left (Sequence event only)
- Cross median/centerline (Sequence event only)
- Overturn/rollover
- Equipment failure (blown tire, brake failure, etc.) (Sequence event only)
- Fire/explosion
- Immersion
- Jackknife
- Cargo/equipment loss or shift
- Separation of units (Sequence event only)
- Downhill runaway (Sequence event only)
- Other non-collision
- Unknown non-Collision

27- Safety System Used

- None used
- Shoulder and lap belt
- Lap belt only
- Shoulder belt only
- Child safety seat
- Helmet (motorcycle only)
- Protective Pads (elbows, knees, etc. . .)
- Reflective Clothing
- Lighting
- Other
- Unknown

28- Air Bag Status Code

- Deployed - Front
- Deployed - Side
- Deployed - Both Front/Side
- Not Deployed
- Not Applicable
- Unknown

29- Air Bag Switch Code

- Switch in ON position
- Switch in OFF position
- ON-OFF switch not present
- Unknown if switch is present
- Unknown

30- Ejection Code

- Not ejected
- Totally ejected
- Partially ejected
- Not applicable
- Other
- Unknown

35- Carrier Issuing Authority Code

- US DOT
- ICC
- State

36- Interstate

- Yes
- No
- Unknown

37- Cargo Body Type

- Not Applicable
- Bus (15 or more)
- Bus (7-15)
- Van
- Grain/gravel truck
- Pole
- Cargo tank
- Flatbed
- Dump
- Concrete Mixer
- Auto transporter
- Garbage truck
- Other
- Unknown

38- Gross Weight Code

- Less than 10,000 lbs
- 10,001 - 26,000 lbs
- More than 26,000 lbs

39- Trailer Length

- 28 feet
- 45 feet
- 48 feet
- 53 feet
- Other

33- Transported by Code

- Not transported
- EMS
- Police
- Other
- Unknown

34- Property Type Code

- State
- MDC
- Municipal
- Utilities
- Other
- Unknown

41- Hazmat Material 1 Digit Code


- Explosives
- Gases
- Flammable liquid
- Flammable solids
- Oxidizing substances
- Poisonous substances
- Radioactive Material
- Corrosives
- Misc Dangerous goods

42- Hazmat Material Release Code

- Yes - materials released
- No materials released
- Unknown

- 1. Select Fields
- 2. Query Type**
- 3. Define Query
- 4. Visualize Results


Select the type of query from below. If you first select "Basic Search" or "Advanced Search", you can then further refine with a "Spatial Search". If you first select "Spatial Search", you can then further refine by either "Basic Search" or "Advanced Search". You will then be able to visualize the results.



Basic Search

After selecting the fields to include in the query results from the previous screen, you can query on 17 pre-selected fields, (the most commonly requested), by clicking on the above button. You can then opt to further refine through a "Spatial Search" or go directly to visualize results


Basic Search →



Spatial Search

After selecting the fields to include in the query results from the previous screen, you can spatially query the data by clicking on the above button. You can then opt to further refine through a "Basic Search" or "Advanced Search" or go directly to visualize results.

Spatial Search →



Advanced Search

After selecting the fields to include in the query results from the previous screen, you can query using over 160 data fields with various mathematical and logical operators for a detailed query by clicking on the above button. You can then opt to further refine through a "Spatial Search" or go directly to visualize results.

Advanced Search →

Reset Basic Filters

Join Spatial Filter (Find) ?

Basic Filters

crash date from 01/01/2019 crash date to 11/21/2022 City/Town

Time Of Day From: 12 00 AM To: 11 59 PM RPA District

Restrict to Not Located

- Crash Characteristic Filters
- Vehicle Characteristic Filters
- Person Characteristic Filters

Basic Search Help

The basic query is a parameter-driven search. This search supports selecting criteria specific to a crash but also vehicle and person-type details as well. Results for this search can be displayed on a crash level identifying all crashes meeting the selected criteria, on a vehicle level for all vehicles involved in crashes, or on a person level for all persons involved in crashes.

Upon submitting the search, the results screen will display showing all records meeting the search criteria. The related crashes will display as points on the map based on the location they occurred. After reviewing the results, the search can be refined by returning to the basic search form. Otherwise, by navigating to the spatial tab, the results can be refined to a specific area on the map based on several location types.

• Step 1: Select Criteria in one of the collapsible panels

1. Select Fields

2. Query Type

3. Define Query

4. Visualize Results

Basic Search

Spatial Search

Advanced Search

Reset All Filters

Data Level: **Crash**

Visualize Results

Reset Advance Filters

Join Spatial Filter (Find) ?

Query Builder

AND

OR

+ Add rule

+ Add group

Crash Date

between

1/1/2019

, 11/21/2022

Crash Date

This field is in the format of MM/DD/YYYY. But, querying using the format M/D/YYYY will still work. When using "Between" the from and to dates will be included.

Query Tools

Import/Export Query

Open Query

Set Query Builder From Input

Build SQL For Output

Copy SQL

Advanced Search Help

The advanced or 'Ad-Hoc' query is a query building tool that uses an approach similar to building advanced SQL-like query statements. By combining a selection field with a desired value and appropriate operations (e.g. equals, not equals, less than, greater than, etc...) into query rules and groups, we can construct a SQL query behind the scenes to effectively query at a crash level for all crashes meeting the criteria, on a vehicle level for vehicles involved in crashes, or on a person level for persons involved in crashes.

* Structured Query Language (SQL) is a programming language used to communicate with and manipulate databases.

1. Select Fields | 2. Query Type | **3. Define Query** | 4. Visualize Results

Basic Search | **Spatial Search** | Advanced Search

Reset All Filters | Data Level: **Crash** | Visualize Results

Reset Spatial Filters

Join Basic Filter | Join Advanced Filter

crash date from 01/01/2019 | crash date to 11/23/2022

Find | **Draw** | Address

Step 1: Draw Shape Type | Reset Draw

Point | Line | Area

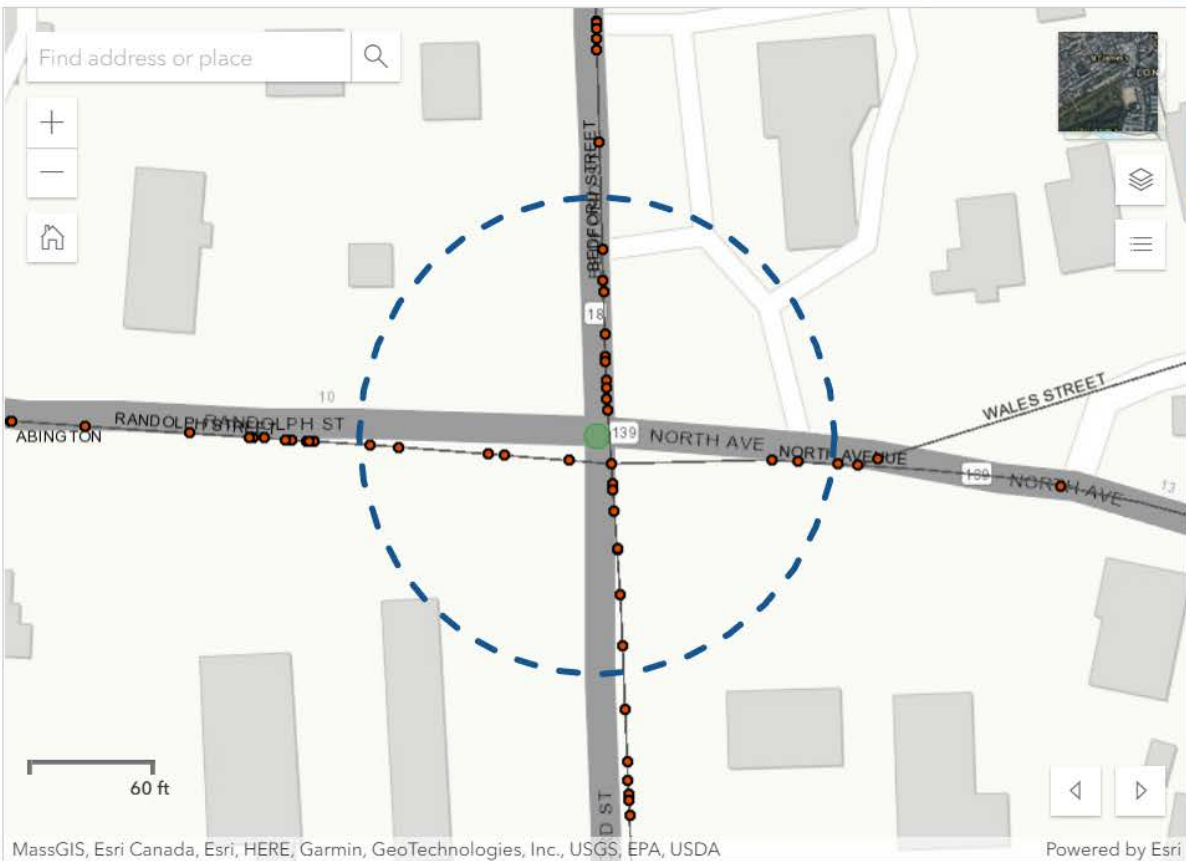
Step 2: Define Buffer (Required)

buffer distance 150 | buffer units Feet

Buffer

Step 3: Run Query

Click the "Visualize results" button above



File Home Insert Page Layout Formulas Data Review View Add-ins Help ACROBAT

Clipboard: Paste, Cut, Copy, Format Painter

Font: Calibri, 9, Bold, Italic, Underline, Paragraph, Text Color, Background Color

Alignment: Merge & Center

Number: General, Currency, Percentage, Decimals

Styles: Conditional Formatting, Format as Table, Cell Styles

Cells: Insert, Delete, Format

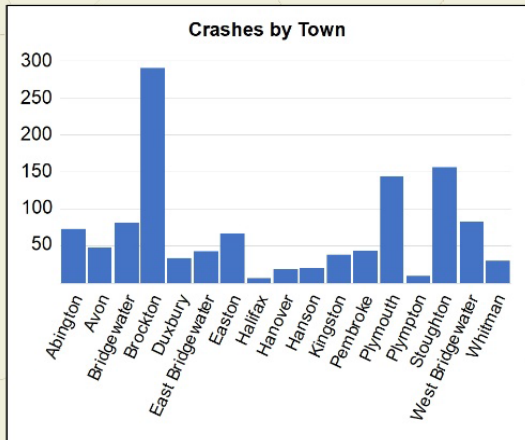
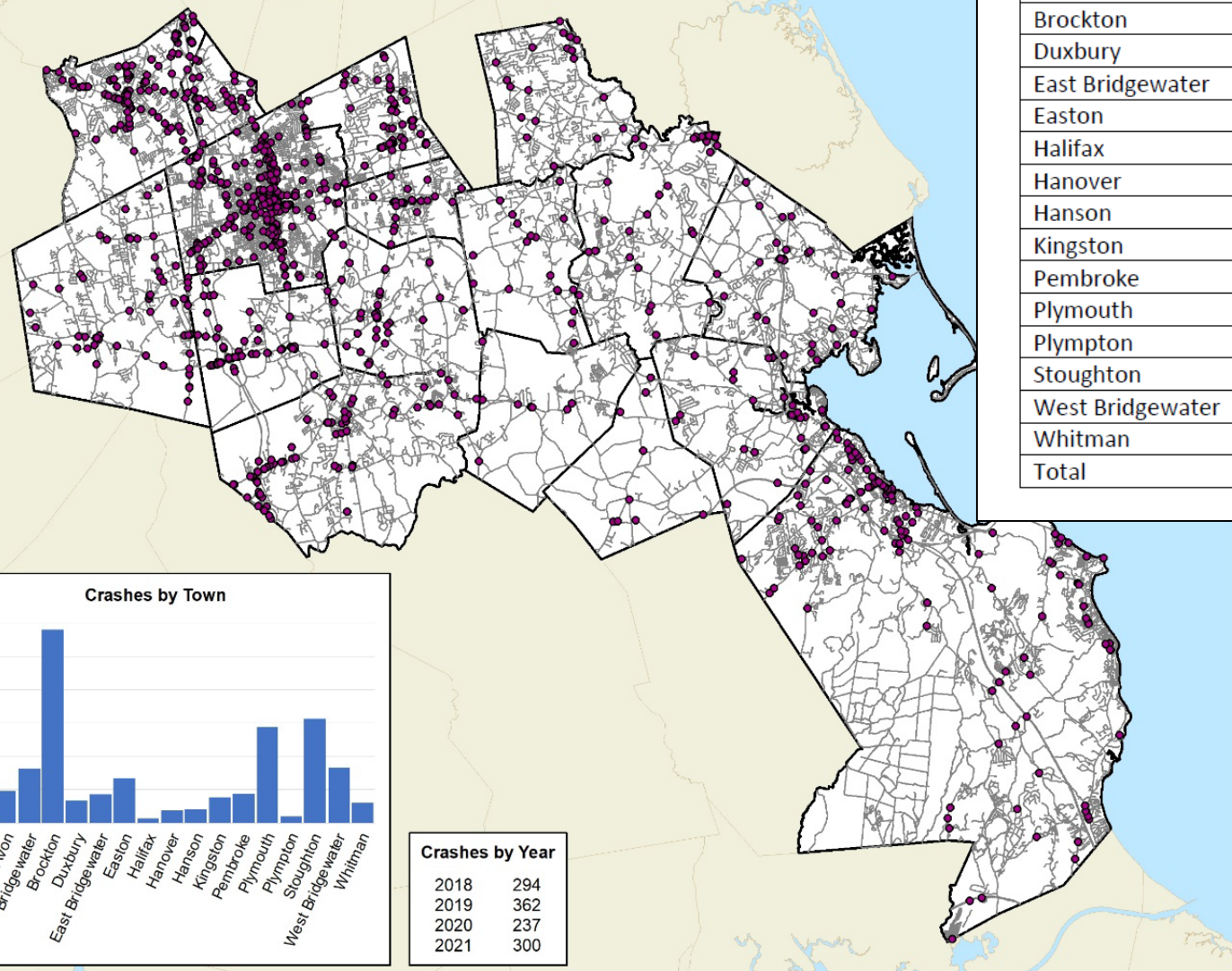
Editing: AutoSum, Fill, Clear, Sort & Filter, Find & Select

Analysis: Analyze Data

B9 | fx | 4672280

| | A | B | C | D | E | F | G | H | I | J | K | L | M | N | O | P |
|----|-------|-----------|------------|---|--------------|------------|---|--------|---------------|---------------|-----|-----|--|--|---------------------------------|------------------------|
| 1 | Crash | Crash Num | Crash Date | Crash Severity | Crash Status | Crash Time | Max Injury Severity | Number | Age of Driver | Age of Driver | Age | Age | Driver Contributing Circumstances (All Drivers) | Driver Distracted | First Harmful Event | Light Conditions |
| 2 | 1 | 4657494 | 01/03/2019 | Property damage only (non-fatal injury) | Closed | 9:53 AM | No injury | 2 | 21-24 | | | | D1: (Unknown) / D2: (No improper driving) | D2: Not Distracted | Collision with motor vehicle in | Daylight |
| 3 | 2 | 4657179 | 01/12/2019 | Non-fatal injury | Closed | 2:07 PM | Non-fatal injury - Possible Injury (C) | 2 | 35-44 | | | | D1: (Failed to yield right of way) / D2: (No improper driving) | D1: Not Distracted / D2: (No improper driving) | Collision with motor vehicle in | Daylight |
| 4 | 3 | 4657182 | 01/12/2019 | Property damage only (non-fatal injury) | Closed | 4:47 PM | No injury | 2 | 18-20 | | | | D1: (Followed too closely) / D2: (No improper driving) | D1: Not Distracted / D2: (No improper driving) | Collision with motor vehicle in | Dark - lighted roadway |
| 5 | 4 | 4657135 | 01/21/2019 | Property damage only (non-fatal injury) | Closed | 7:37 AM | No injury | 1 | 25-34 | | | | D1: (Unknown) | | Collision with other light pole | Daylight |
| 6 | 5 | 4657245 | 01/22/2019 | Property damage only (non-fatal injury) | Closed | 12:06 PM | No injury | 2 | 18-20 | | | | D1: (Unknown) / D2: (No improper driving) | D2: Not Distracted | Collision with motor vehicle in | Daylight |
| 7 | 6 | 4657260 | 01/24/2019 | Property damage only (non-fatal injury) | Closed | 6:47 PM | No injury | 2 | 25-34 | | | | D1: (Failed to yield right of way) / D2: (No improper driving) | | Collision with motor vehicle in | Dark - lighted roadway |
| 8 | 7 | 4659771 | 02/02/2019 | Property damage only (non-fatal injury) | Closed | 5:21 PM | No injury | 2 | 35-44 | | | | D1: (Failed to yield right of way) / D2: (No improper driving) | D2: Not Distracted | Collision with motor vehicle in | Dark - lighted roadway |
| 9 | 8 | 4672280 | 02/28/2019 | Property damage only (non-fatal injury) | Closed | 8:50 PM | No injury | 2 | 21-24 | | | | D1: (No improper driving) / D2: (Inattention) | D1: Not Distracted | Collision with motor vehicle in | Dark - lighted roadway |
| 10 | 9 | 4674225 | 03/05/2019 | Non-fatal injury | Closed | 9:19 AM | Non-fatal injury - Non-fatal injury (C) | 2 | 21-24 | | | | D1: (No improper driving) / D2: (Failed to yield right of way) | D1: Not Distracted | Collision with motor vehicle in | Daylight |
| 11 | 10 | 4687425 | 04/01/2019 | Property damage only (non-fatal injury) | Closed | 9:50 PM | No Apparent Injury (O) | 3 | 25-34 | | | | D1: (Other improper action) / D2: (No improper driving) | D1: Not Distracted / D2: (No improper driving) | Collision with motor vehicle in | Dark - lighted roadway |
| 12 | 11 | 4686950 | 04/06/2019 | Non-fatal injury | Closed | 11:32 AM | No injury | 2 | 21-24 | | | | D1: (Inattention) / D2: (No improper driving) | D2: Not Distracted | Collision with motor vehicle in | Daylight |
| 13 | 12 | 4692206 | 04/18/2019 | Not Reported | Closed | 5:28 PM | Unknown | 2 | 25-34 | | | | D1: (Failure to keep in proper lane or running off road) | D2: Not Distracted | Collision with motor vehicle in | Daylight |
| 14 | 13 | 4692207 | 04/19/2019 | Property damage only (non-fatal injury) | Closed | 12:08 AM | No Apparent Injury (O) | 2 | 25-34 | | | | D1: (Disregarded traffic signs, signals, road markings) | D2: Not Distracted | Collision with motor vehicle in | Dark - lighted roadway |
| 15 | 14 | 4696083 | 04/25/2019 | Non-fatal injury | Closed | 1:21 PM | Possible Injury (C) | 2 | 35-44 | | | | D1: (Other improper action) / D2: (No improper driving) | D1: Not Distracted / D2: (No improper driving) | Collision with motor vehicle in | Daylight |
| 16 | 15 | 4696099 | 04/28/2019 | Property damage only (non-fatal injury) | Closed | 6:22 PM | No injury | 2 | 35-44 | | | | D1: (No improper driving) / D2: (No improper driving) | D1: Not Distracted / D2: (No improper driving) | Collision with motor vehicle in | Dusk |
| 17 | 16 | 4700270 | 05/11/2019 | Non-fatal injury | Closed | 7:35 AM | Possible Injury (C) | 2 | 35-44 | | | | D1: (Unknown) / D2: (Other improper action) | D1: Not Distracted | Collision with motor vehicle in | Daylight |
| 18 | 17 | 4700184 | 05/11/2019 | Property damage only (non-fatal injury) | Closed | 11:33 AM | No Apparent Injury (O) | 4 | 55-64 | | | | D1: (Inattention),(Followed too closely) / D2: (No improper driving) | D2: Not Distracted / D3: (No improper driving) | Collision with motor vehicle in | Daylight |
| 19 | 18 | 4703209 | 05/17/2019 | Not Reported | Closed | 4:19 PM | Unknown | 2 | 35-44 | | | | D1: (Followed too closely) / D2: (No improper driving) | D2: Not Distracted | Collision with motor vehicle in | Daylight |
| 20 | 19 | 4708993 | 05/30/2019 | Non-fatal injury | Closed | 1:28 PM | Suspected Minor Injury | 2 | 55-64 | | | | D1: (Failed to yield right of way) / D2: (No improper driving) | D2: Not Distracted | Collision with motor vehicle in | Daylight |
| 21 | 20 | 4709404 | 06/02/2019 | Non-fatal injury | Closed | 6:18 PM | Non-fatal injury - Possible Injury (C) | 2 | 21-24 | | | | D1: (No improper driving) / D2: (Failed to yield right of way) | D1: Not Distracted / D2: (No improper driving) | Collision with motor vehicle in | Daylight |
| 22 | 21 | 4716505 | 06/18/2019 | Non-fatal injury | Closed | 12:20 PM | No injury | 2 | 35-44 | | | | D1: (Other improper action) / D2: (No improper driving) | D1: Not Distracted / D2: (No improper driving) | Collision with motor vehicle in | Daylight |
| 23 | 22 | 4718877 | 06/26/2019 | Non-fatal injury | Closed | 3:06 PM | Possible Injury (C) | 2 | 35-44 | | | | D1: (No improper driving) / D2: (Failed to yield right of way) | | Collision with motor vehicle in | Daylight |
| 24 | 23 | 4725248 | 07/14/2019 | Property damage only (non-fatal injury) | Closed | 10:01 PM | No Apparent Injury (O) | 2 | 25-34 | | | | D1: (Unknown) / D2: (Unknown) | | Collision with motor vehicle in | Dark - lighted roadway |
| 25 | 24 | 4727581 | 07/19/2019 | Property damage only (non-fatal injury) | Closed | 6:51 PM | No Apparent Injury (O) | 2 | 25-34 | | | | D1: (Unknown) / D2: (No improper driving) | D2: Not Distracted | Collision with motor vehicle in | Daylight |
| 26 | 25 | 4733306 | 07/25/2019 | Property damage only (non-fatal injury) | Closed | 2:54 PM | No Apparent Injury (O) | 2 | 25-34 | | | | D1: (Failure to keep in proper lane or running off road) | D1: Not Distracted / D2: (No improper driving) | Collision with motor vehicle in | Daylight |
| 27 | 26 | 4733369 | 08/03/2019 | Non-fatal injury | Closed | 6:37 AM | Possible Injury (C) | 2 | 21-24 | | | | D1: (No improper driving) / D2: (Followed too closely) | D1: Not Distracted | Collision with motor vehicle in | Daylight |
| 28 | 27 | 4737804 | 08/06/2019 | Property damage only (non-fatal injury) | Closed | 5:17 PM | No Apparent Injury (O) | 3 | 25-34 | | | | D1: (No improper driving) / D2: (No improper driving) | D1: Not Distracted / D2: (No improper driving) | Collision with motor vehicle in | Daylight |
| 29 | 28 | 4737573 | 08/08/2019 | Property damage only (non-fatal injury) | Closed | 12:43 AM | No Apparent Injury (O) | 1 | 45-54 | | | | D1: (Driving too fast for conditions),(Failure to keep in proper lane or running off road) | | Collision with median barrier | Dark - lighted roadway |
| 30 | 29 | 4739446 | 08/15/2019 | Property damage only (non-fatal injury) | Closed | 10:23 PM | No Apparent Injury (O) | 2 | 21-24 | | | | D1: (Failure to keep in proper lane or running off road) | | Collision with motor vehicle in | Dark - lighted roadway |
| 31 | 30 | 4739464 | 08/19/2019 | Property damage only (non-fatal injury) | Closed | 8:19 AM | No Apparent Injury (O) | 2 | 55-64 | | | | D1: (Unknown) / D2: (Unknown) | D1: Not Distracted / D2: (No improper driving) | Collision with motor vehicle in | Daylight |
| 32 | 31 | 4751660 | 08/20/2019 | Property damage only (non-fatal injury) | Closed | 9:23 PM | No Apparent Injury (O) | 2 | 35-44 | | | | D1: (Unknown) / D2: (No improper driving) | D2: Not Distracted | Collision with motor vehicle in | Dark - lighted roadway |
| 33 | 32 | 4742191 | 08/21/2019 | Property damage only (non-fatal injury) | Closed | 10:25 AM | No Apparent Injury (O) | 2 | 18-20 | | | | D1: (No improper driving) / D2: (Failed to yield right of way) | D1: Not Distracted | Collision with motor vehicle in | Daylight |
| 34 | 33 | 4745870 | 08/29/2019 | Non-fatal injury | Closed | 12:46 PM | Suspected Minor Injury | 2 | 45-54 | | | | D1: (Inattention) / D2: (No improper driving) | D1: Other activity (see notes) | Collision with motor vehicle in | Daylight |
| 35 | 34 | 4745875 | 09/02/2019 | Property damage only (non-fatal injury) | Closed | 10:58 PM | No Apparent Injury (O) | 2 | 25-34 | | | | D1: (Driving too fast for conditions) / D2: (Unknown) | | Collision with motor vehicle in | Dark - lighted roadway |

Crashes Involving Heavy Vehicles in the OCPC Region

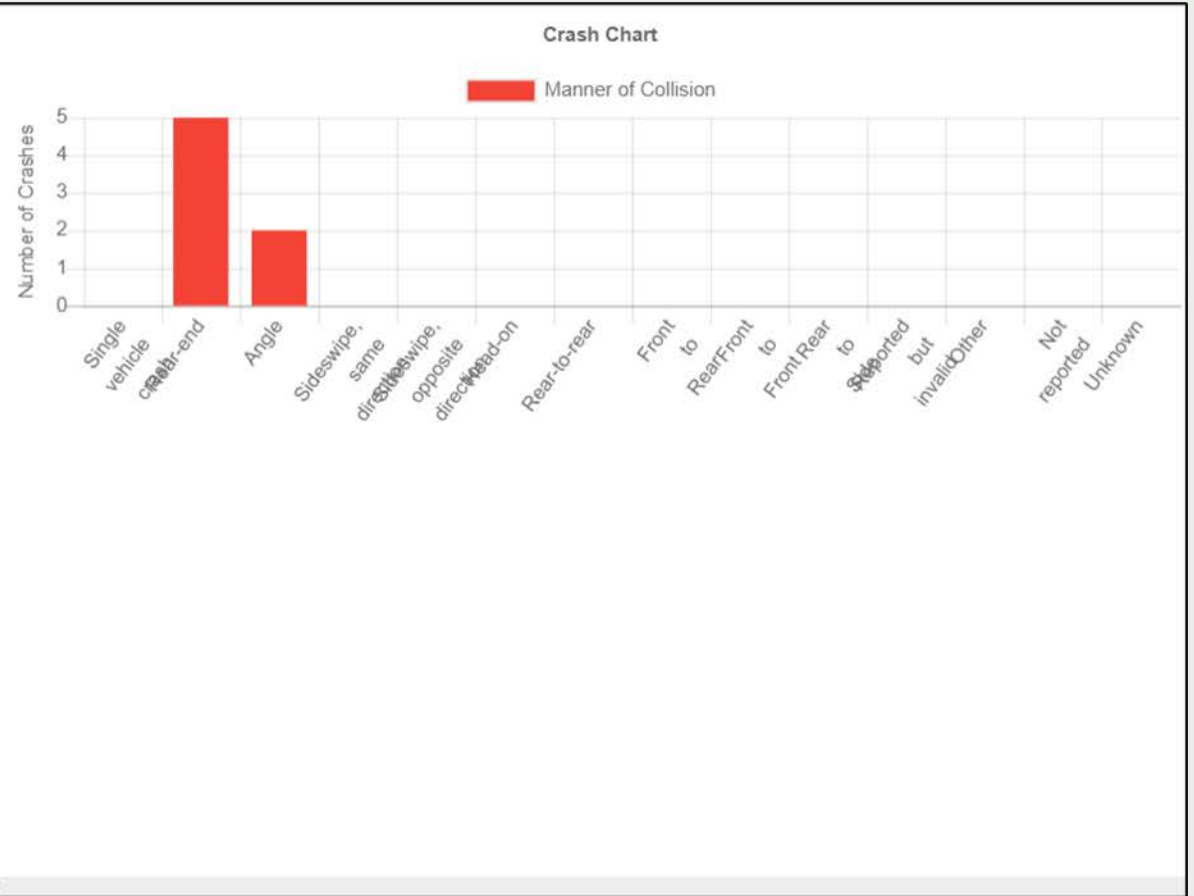
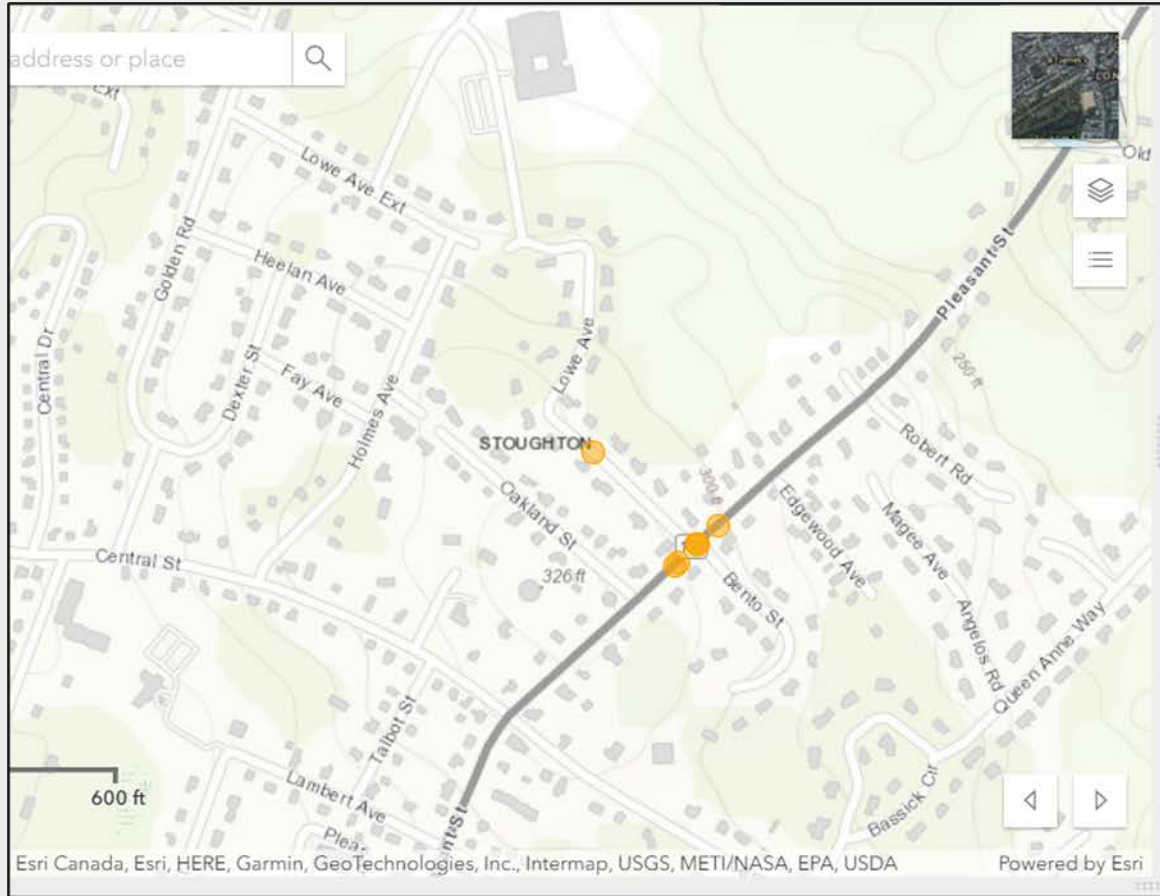


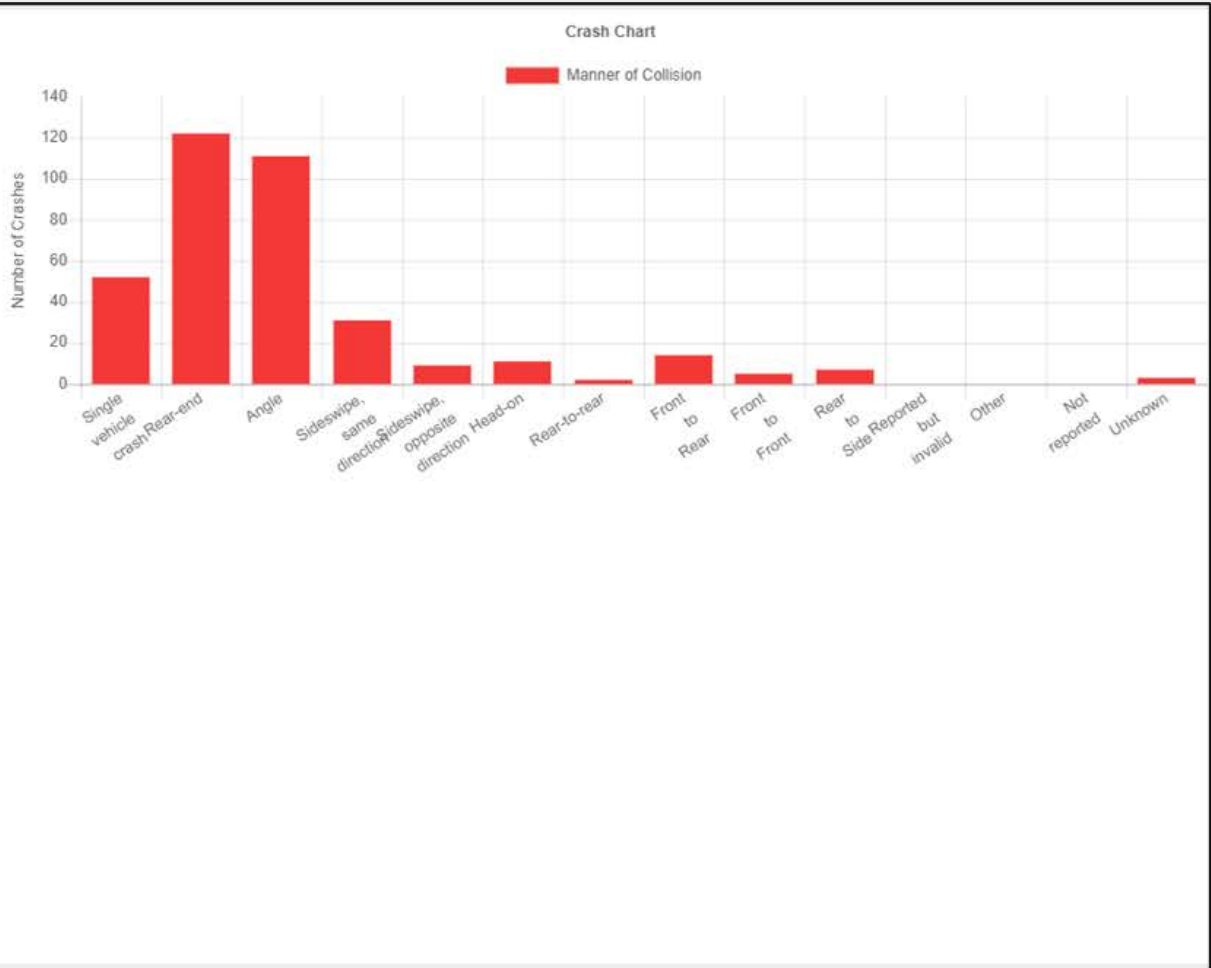
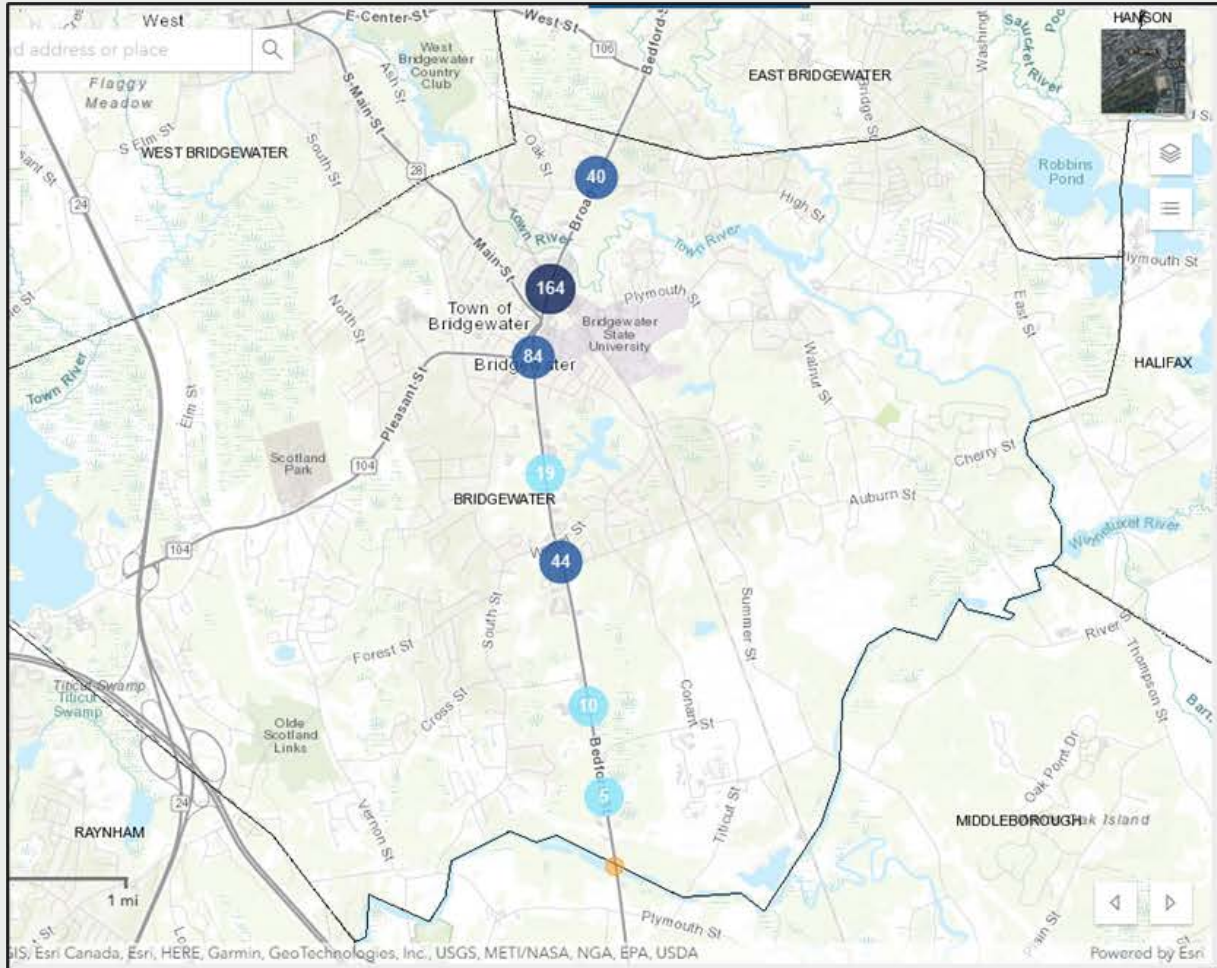
Crashes by Year

| | |
|------|-----|
| 2018 | 294 |
| 2019 | 362 |
| 2020 | 237 |
| 2021 | 300 |

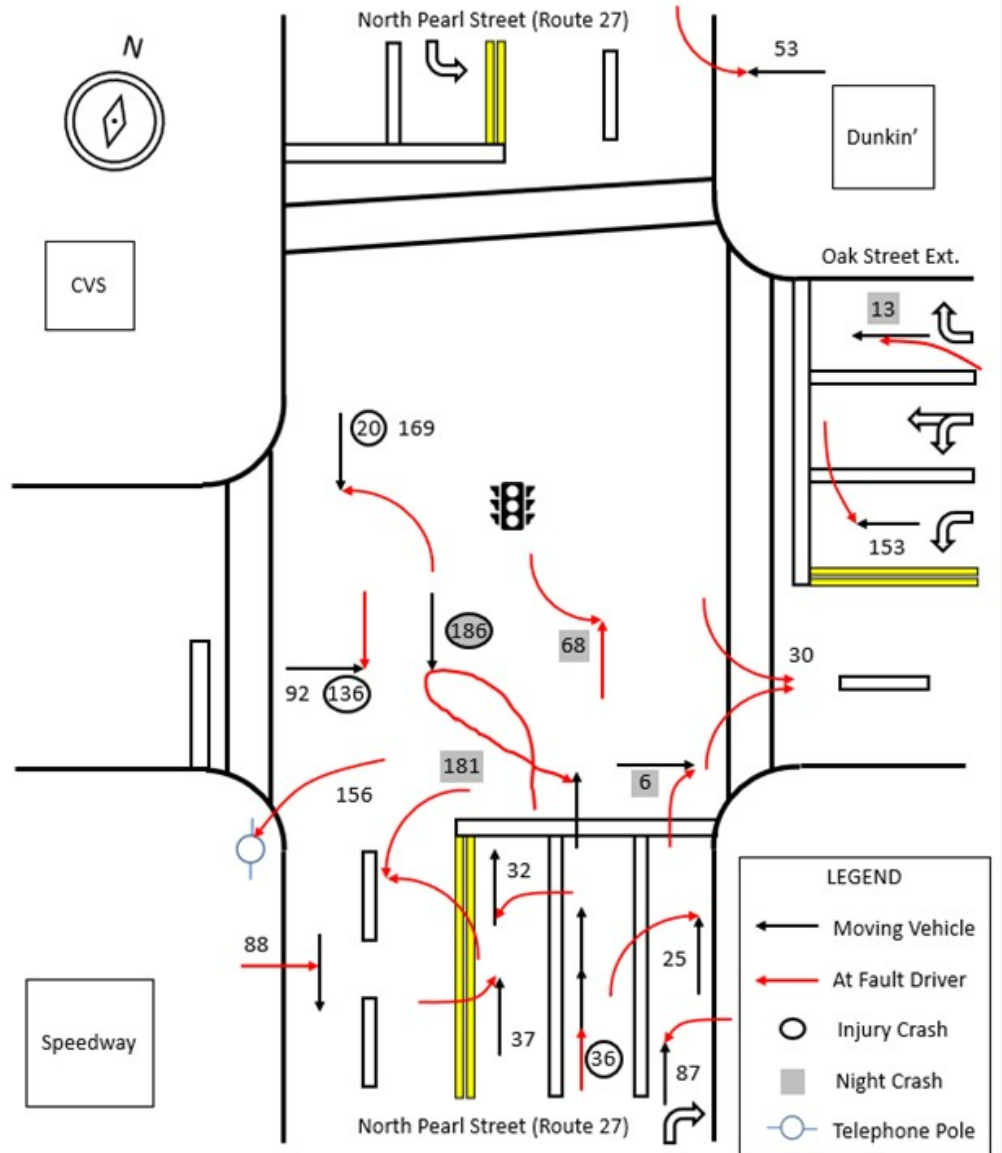
Table 7 - Truck Crashes in the OCPC Region by Type of Crash

| Community | Single Vehicle Truck Crash hit fixed object (parked car, sign post, etc.) | Truck Crash with Bridge or Overhead | Truck Crash with Pedestrian | Truck Crash with Bicycle |
|------------------|---|-------------------------------------|-----------------------------|--------------------------|
| Abington | 10 | 4 | 0 | 0 |
| Avon | 5 | 0 | 0 | 0 |
| Bridgewater | 14 | 0 | 0 | 1 |
| Brockton | 38 | 11 | 5 | 0 |
| Duxbury | 10 | 1 | 0 | 0 |
| East Bridgewater | 6 | 0 | 0 | 0 |
| Easton | 12 | 0 | 0 | 0 |
| Halifax | 2 | 0 | 0 | 0 |
| Hanover | 4 | 0 | 0 | 0 |
| Hanson | 6 | 0 | 0 | 0 |
| Kingston | 6 | 6 | 0 | 0 |
| Pembroke | 2 | 1 | 0 | 0 |
| Plymouth | 32 | 1 | 2 | 1 |
| Plympton | 2 | 0 | 0 | 0 |
| Stoughton | 29 | 1 | 0 | 0 |
| West Bridgewater | 14 | 1 | 0 | 0 |
| Whitman | 9 | 1 | 0 | 0 |
| Total | 201 | 27 | 7 | 2 |





COLLISION DIAGRAM
 North Pearl Street (Route 27) at Oak Street Extension
 Collision Diagram for Crashes (2019-2021)
 Prepared by OCPC (SB 6/2022) (Source: Brockton Police Dept.)



Quick Demo

Impact portal link:

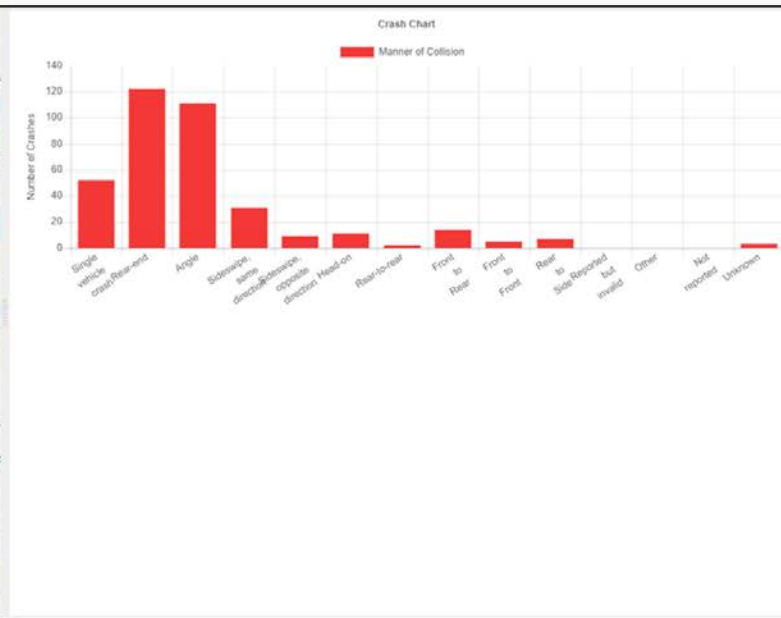
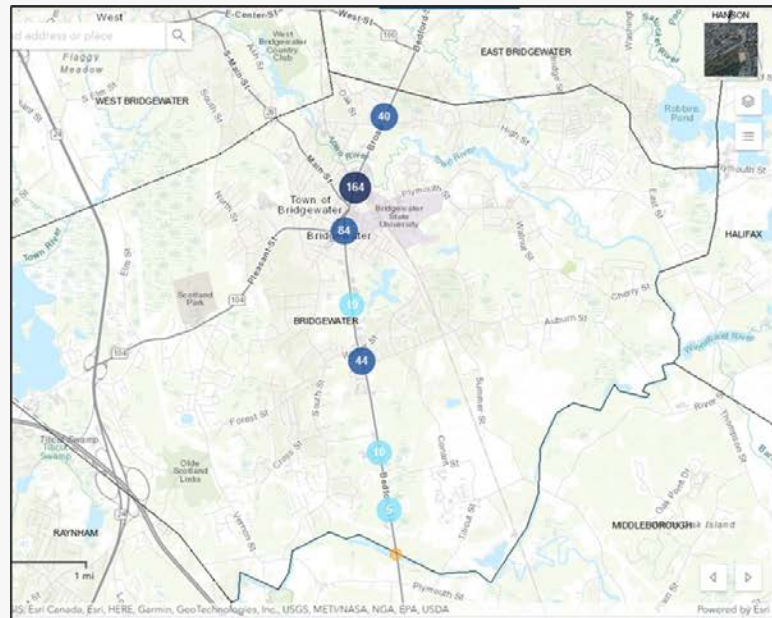
[MassDOT: Crash Data Portal \(state.ma.us\)](https://state.ma.us)



Raymond Guarino
Principal Transportation Planner
Old Colony Planning Council
70 School Street
Brockton, MA 02301
(774) 539-2989
rguarino@ocpcrpa.org

www.ocpcrpa.org

Questions or Comments?



THANK YOU MASSDOT FOR IMPACT!

December 1, 2022 Old Colony MPO Meeting
Agenda Item 7C
Old Colony 2050 Long Range Transportation Plan
Development Update

Summary

Old Colony Planning Council is collaborating with MassDOT and mobility partners in the region to plan focus group meeting(s) in the coming months to discuss mobility needs and challenges for the region to be focused on in the 2050 Long Range Transportation Plan. The first focus group meeting will be held in cooperation and collaboration with the Brockton Area Transit (BAT) Authority and will be scheduled in December or January.

A public survey will be launched in the next couple of weeks. This survey was developed in cooperation with the Massachusetts Department of Transportation.

If you have any questions about these Goals of the Plan, please contact LRTP Project Manager Bill McNulty at wmcnulty@ocpcrpa.org or (774) 539-5103.

December 1, 2022 Old Colony JTC Meeting
Agenda Item 8A
Community Local Technical Assistance Studies

Summary

Through Task 3200 (Local Highway Technical Assistance) of the Old Colony Metropolitan Planning Organization (MPO) FFY 2022 Unified Planning Work Program, Old Colony Planning Council provides local traffic planning and technical analysis services to its member communities.

Old Colony Planning Council has completed a traffic study of traffic within Kingston, counting the number of vehicles accessing the Kingston Commuter Rail Station over a one-week (including weekends) period. This data was distributed to the Town.

A traffic study of the intersection and surrounding area of Route 106 at Bridge Street in East Bridgewater was recently completed for the Town.

Old Colony Planning Council in cooperation with the Town of Stoughton recently conducted a walkability audit of Pleasant Street (Route 139) at Lowe Avenue.

Old Colony Planning Council recently completed traffic counts by request for the Town of Whitman.

Project Status Updates

Duxbury

- Traffic Study for Route 3A at Oak Street and Parks Avenue, and Route 3A at Elm Street and Soule Avenue
Data collection in progress

East Bridgewater

- Central Street Corridor Traffic Study
Data analysis underway

Kingston

- Road Safety Audit of Landing Road
RSA to be scheduled

Plymouth

- Aerial Inventory of Locations (OCPC Drone Program)
Drone flights to be scheduled

For information about local technical assistance studies prepared by OCPC or to request technical assistance in your community, please direct inquiries to Bill McNulty, PTP (wmcnulty@ocpcrpa.org) at (774) 539-5103.

December 1, 2022 Old Colony JTC Meeting
Agenda Item 8B
Staff Reviews on ENFs, EIRs, and NPCs

Summary

The reviews on Environmental Notification Forms (ENFs), Environmental Impact Reports (EIRs), and Notices of Project Change (NPCs) staff report includes projects that are subject to Massachusetts Environmental Policy Act (MEPA) review under M.G.L. c. 30, sections 61-62H. The staff report provides information about proposed projects, proponent and MEPA points of contact, and comment period deadlines in order to provide the public with an opportunity to review and comment on any and all proposed projects. Information on the MEPA review process; project filing procedures; the staff directory; and information on current and past projects can be accessed at <http://www.mass.gov/eea/agencies/mepa/>.

Submitting Comments to MEPA

The Secretary of Energy and Environmental Affairs (EEA) accepts written comments on projects currently under MEPA review. Comments may be submitted electronically, by mail, via fax, or by hand delivery. Comments submitted to MEPA are public records and should be sent to the following address:

Secretary Kathleen Theoharides
EEA, Attn: MEPA Office
[Analyst Name], EEA No. _____
100 Cambridge Street, Suite 900
Boston, MA 02114

New Projects

Notice of Project Change (NPC)

EEA #15870 – Plymouth Light Station Mixed Sediment Berm – Plymouth

Three material changes to the project are as follows:

1. The preferred alternative for shoreline protection is a beach compatible mixed sediment berm backed by a low-crested revetment.
2. The site recommended for the material and equipment storage area is located in an upland area outside of NHESP Jurisdiction. This material and equipment storage area is not located in a wetland resource area.
3. Upland drainage improvements along the bluff crest are proposed to ensure that overland flow does not exacerbate bluff-face erosion.

Certificates

EEA #16104 - Comprehensive Wastewater Management Plan (EIR) – Kingston

Certificate states project **adequately and properly** complies with MEPA.

EEA #16561 - Raynham Park Redevelopment - Raynham

Certificate states project **does not adequately and properly comply** with MEPA.

EEA #16578 - Owl Ridge Estates (EIR) - Easton

Certificate state project **adequately and properly complies** with MEPA.

EEA #16538 – Long Beach Mixed-Sediment Nourishment – Plymouth

Certificate states project **adequately and properly complies** with MEPA

Public Notices

Notice of Application for a 401 Water Quality Certificate - Duxbury

Pursuant to 33 U.S.C. 1341 M.G.L. c. 21 §§ 26 -53, notice is given of a 401 Water Quality Certification application filed by the MassDOT Highway Division, Ten Park Plaza, Room 7360,

Boston, MA 02116 for the replacement of two existing bridges carrying Route 3 NB and SB, over Franklin Street in Duxbury, Massachusetts. The project will replace the existing bridges with new structures with improved vertical clearance. This will require shifting the northbound bridge and lane approaches west into the median, resulting in permanent wetland fill as well as temporary impacts during the construction phase.

**December 1, 2022 Old Colony JTC Meeting
Agenda Item 8C**

Regional Concerns and Local Community Transportation Issues

Summary

Regional Concerns and Local Community Transportation Issues.