



OLD COLONY
PLANNING COUNCIL

CEDS



**COMPREHENSIVE ECONOMIC
DEVELOPMENT STRATEGY**

COMMITTEE

Building a More Competitive Regional Economy

WEDNESDAY, DECEMBER 4, 2024

Old Colony Planning Council Office, Brockton, MA

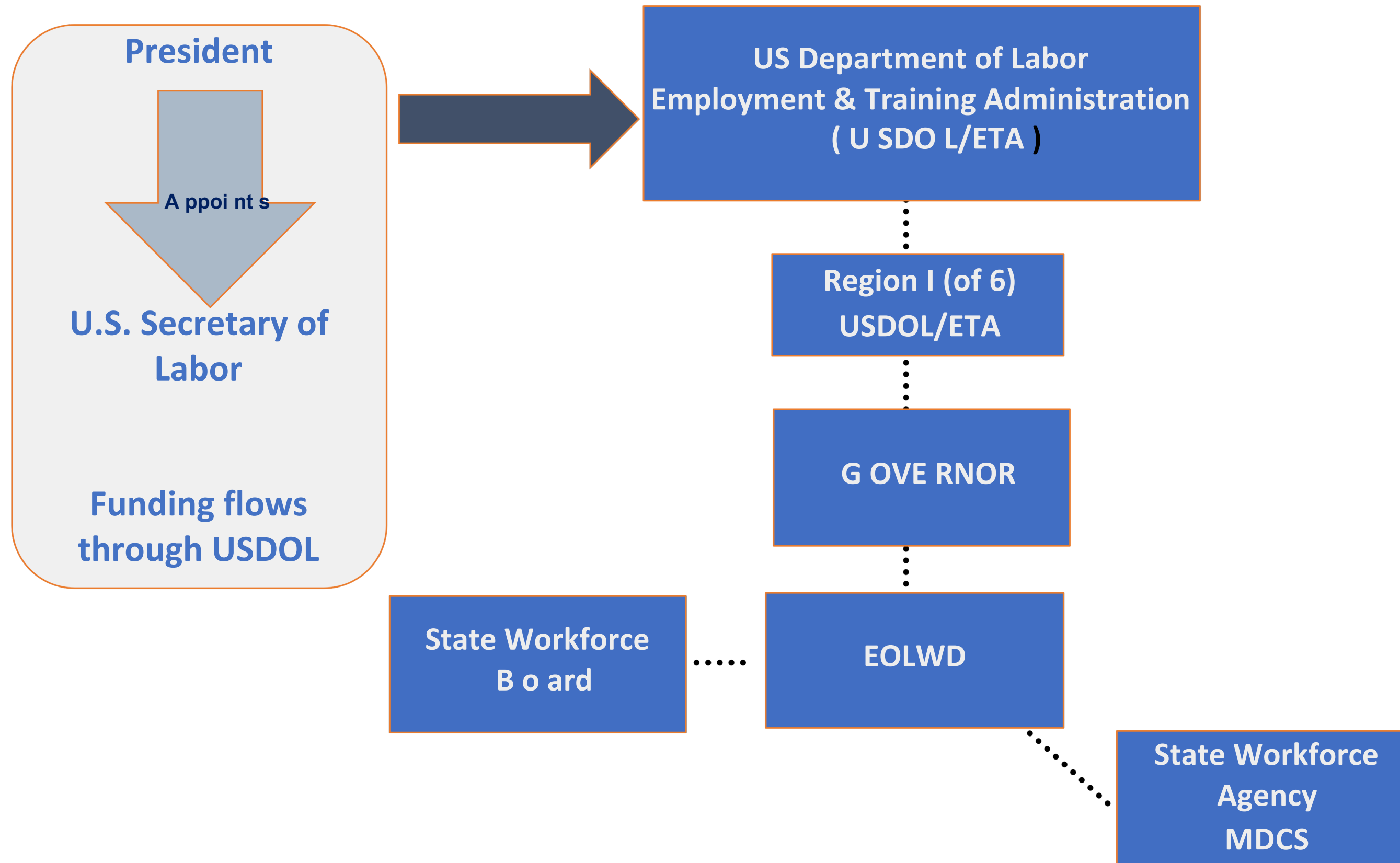


Wednesday, December 4, 2024

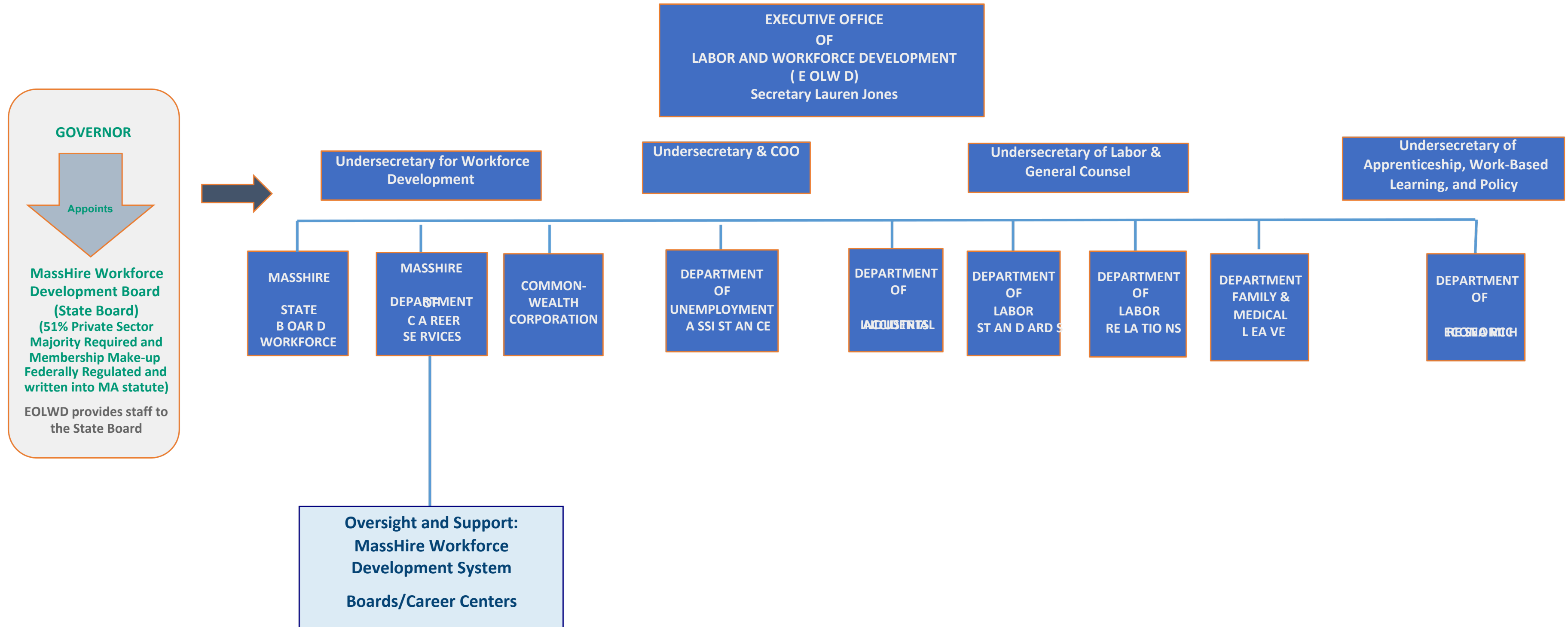
1. **CALL TO ORDER**
2. **ACCEPTANCE OF SEPTEMBER 4, 2024 MEETING MINUTES**
3. **PRESENTATION: Laura Buckley –Deputy Executive Director, MassHire (South Shore Workforce Board)**
 - At MHSSWB, Laura uses labor market analysis to foster economic growth for the South Shore communities, and regularly presents her research at conferences and community events. For 12/4 meeting of the CEDS, Laura will present relevant regional data highlighting the critical role of workforce development in driving economic growth; covering market trends, industry needs, skills gaps etc.
4. **ONGOING & PROPOSED EDA PROJECTS**
 - Avon Sewer Ext. Design (\$2.6ML) \$1.3ML EDA, Proposed – Winter, 2024
 - Regional Commercial/Industrial Park Site Inventory Study, (\$150K) EDA, Underway
 - Plymouth Holtec Master Plan: 1,500-acre vacant portion, fr. Nuclear Power plant site (\$335K), EDA, Received formal award, Underway Town recently contracted with Saskia to prepare master plan
 - EDA – Success Story Highlight Article, Underway**OTHER ECONOMIC DEVELOPMENT PROJECTS**
 - East Bridgewater, Business Assistance Project (\$153K), Underway
 - EPA Brownfields Assessment Grant, Verdantas LLC contracted (\$500K), Underway
5. **DISCUSSION (WRAP-UP): GOALS, OBJECTIVES & PRIORITIES FOR THE CEDS APPROACHING 2025**
6. **NEW BUSINESS - CEDS 2025 AND MOVING FORWARD**
7. **MEETING ADJOURN**

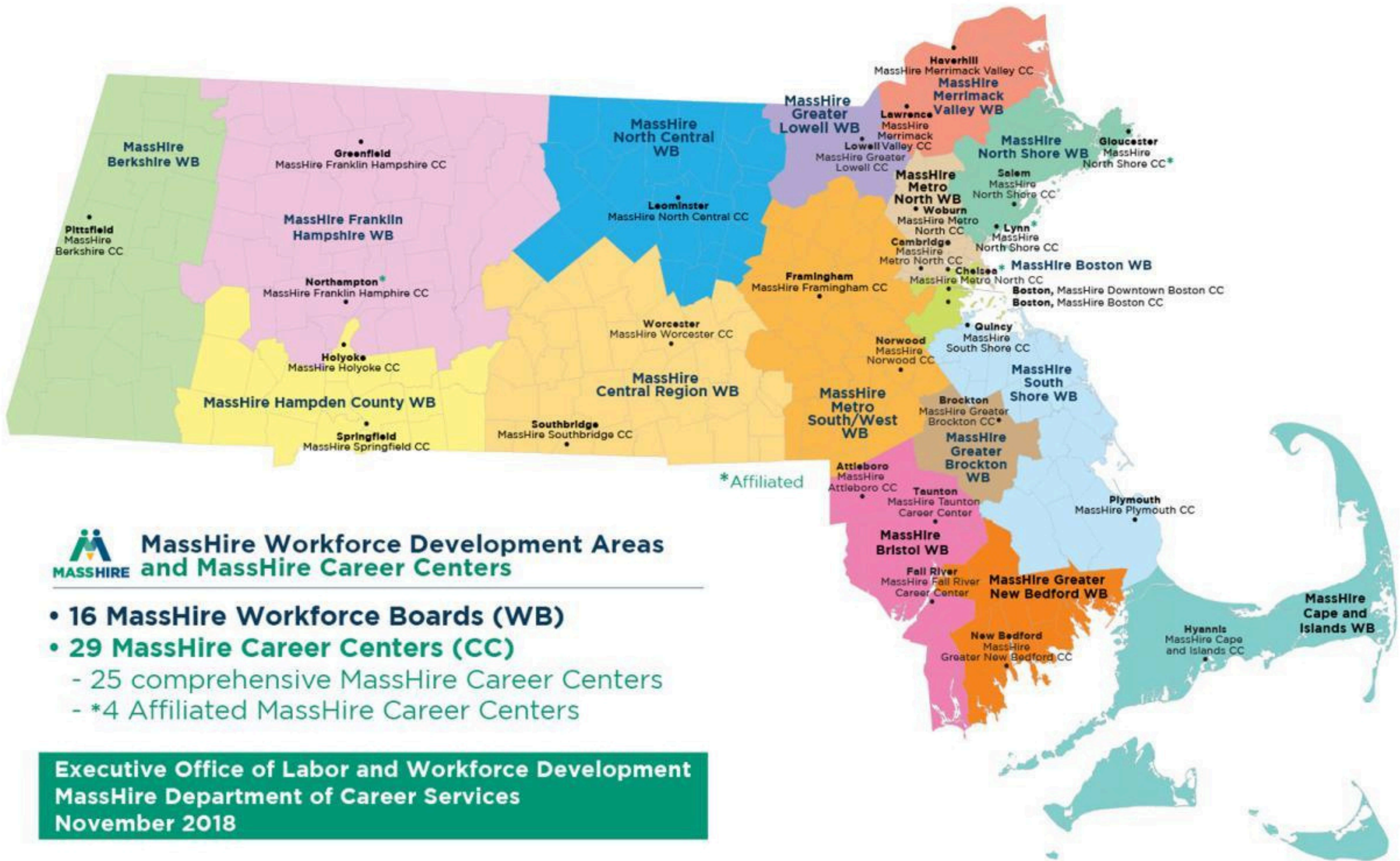


Workforce System Governance: Federal to State



Workforce System Governance: State to Local



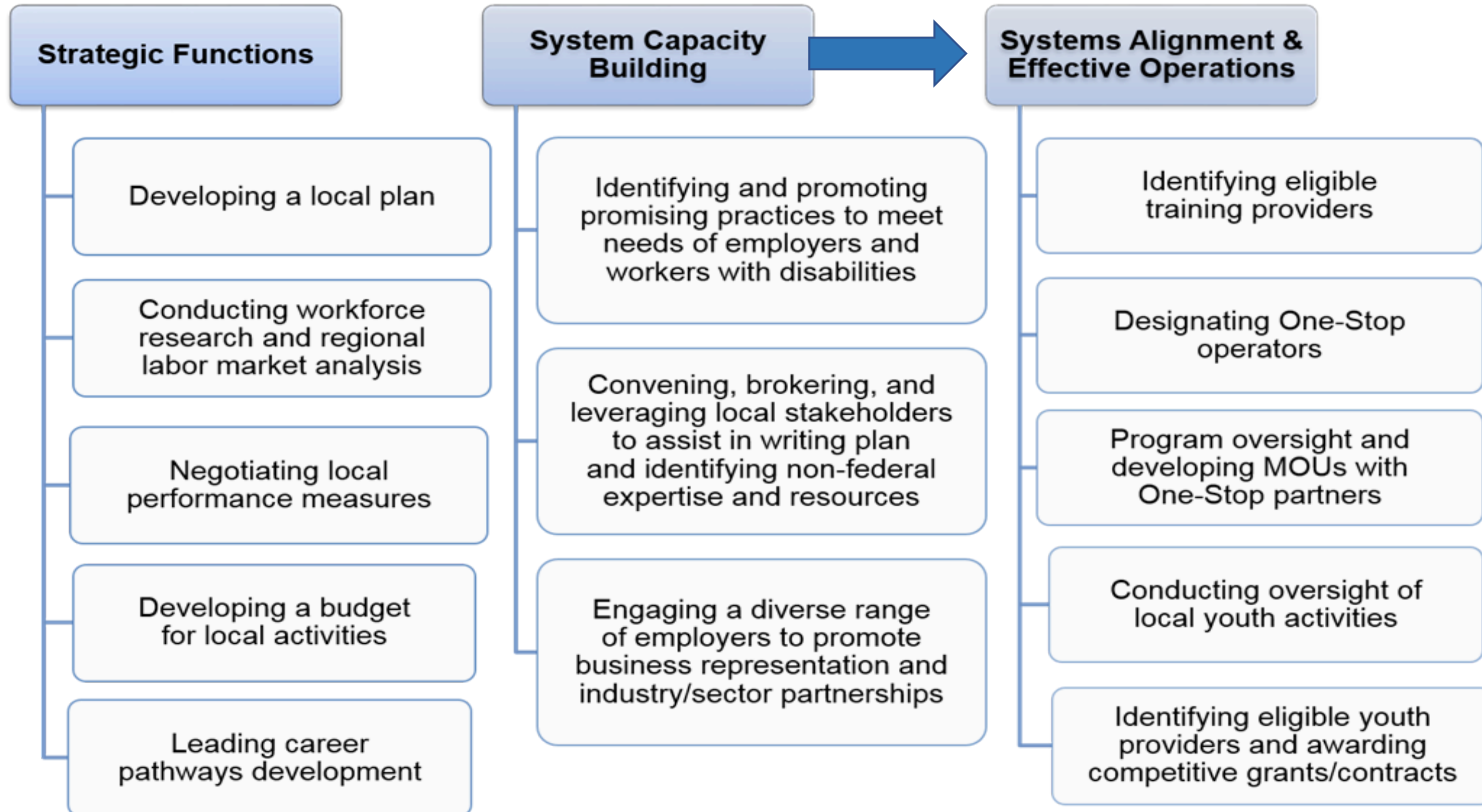


MassHire Workforce Development Areas and MassHire Career Centers

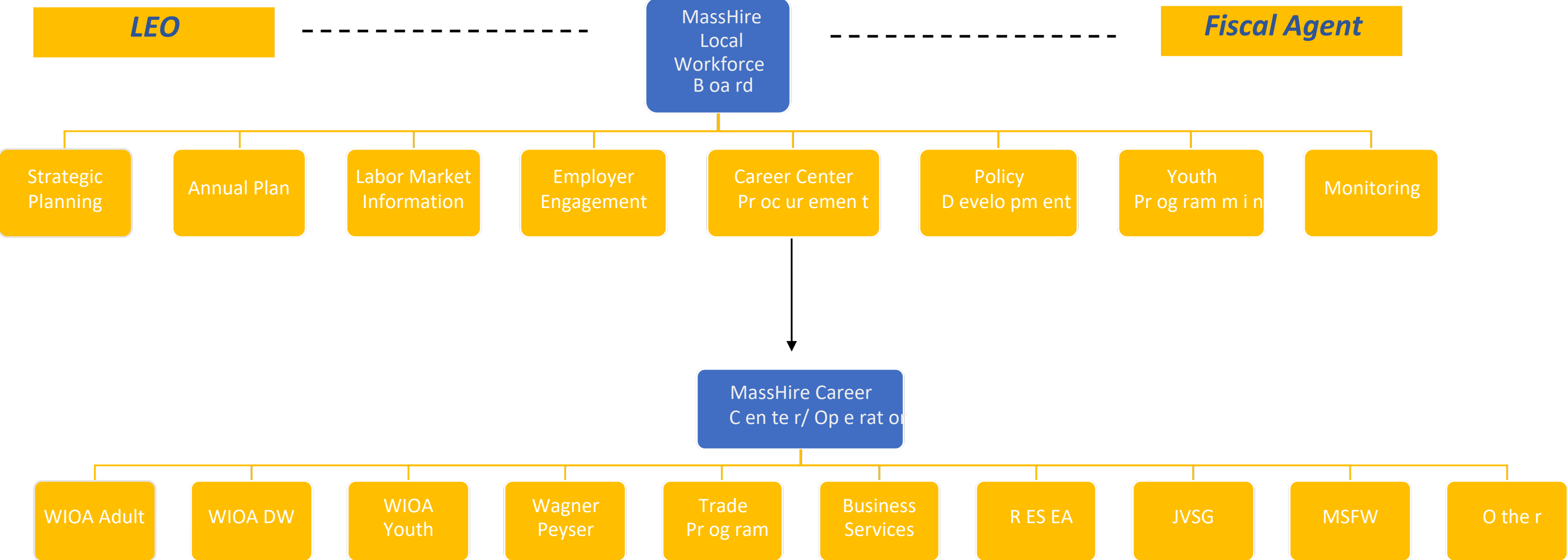
- 16 MassHire Workforce Boards (WB)
- 29 MassHire Career Centers (CC)
 - 25 comprehensive MassHire Career Centers
 - *4 Affiliated MassHire Career Centers

Executive Office of Labor and Workforce Development
 MassHire Department of Career Services
 November 2018

Local Board Responsibilities



Local Coordination:



Date:	Early Fall 2024
Labor Force:	317,957
Employment:	4.4%
Unemployment:	304,115



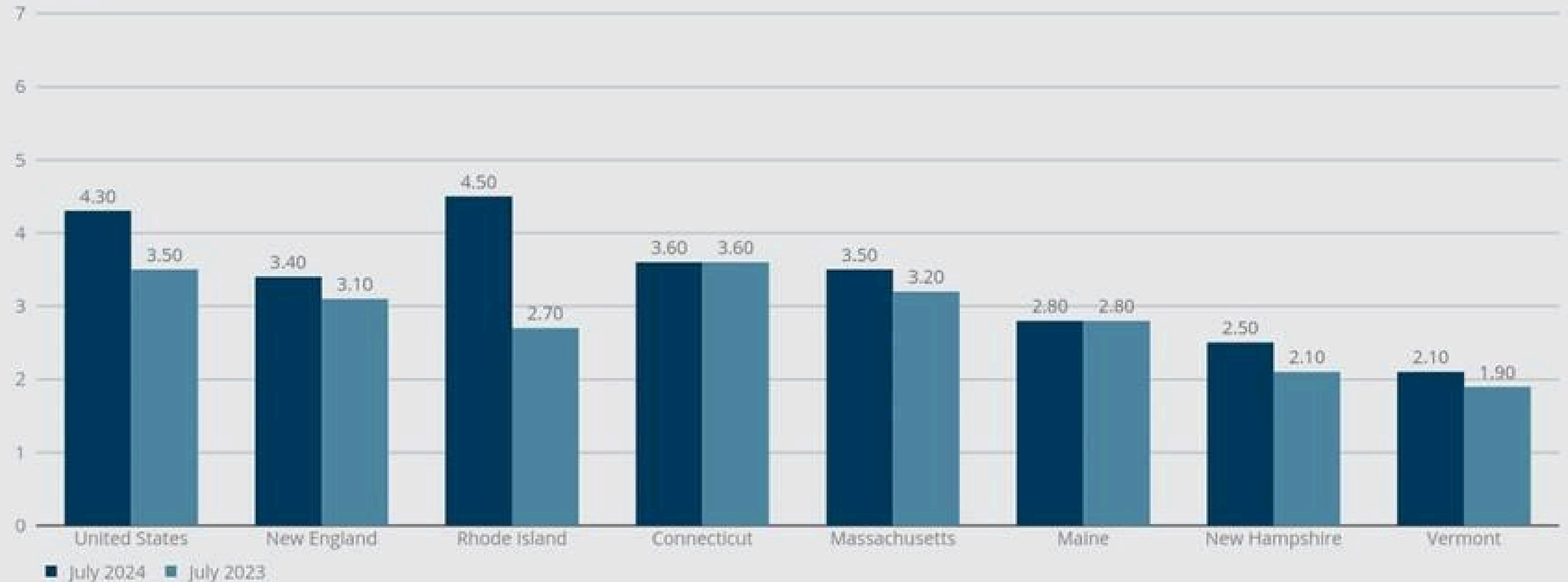
South Shore Workforce Board

Fall 2024

Month	Year	Labor Force	Employed	Unemployed	Area Rate	Massachusetts Rate
A ugu st	2024	317 ,957	304 ,115	13,8 42	4.4	4.5
July	2024	320 ,127	306 ,108	14,0 19	4.4	4.6
June	2024	318 ,395	306 ,113	12,2 82	3.9	4.0
May	2024	310 ,252	298 ,995	11,2 57	3.6	3.8
A pri l	2024	310 ,252	301 ,032	9,22 0	3.0	3.1
March	2024	312 ,698	302 ,062	10,6 36	3.4	3.5
Febru ary	2024	307 ,601	296 ,778	10,8 23	3.5	3.7
Ja nu ary	2024	308 ,968	298 ,486	10,4 82	3.4	3.5
December	2023	306 ,113	296 ,738	9,37 5	3.1	3.2
November	2023	308 ,017	299 ,467	8,55 0	2.8	2.9
Oc to ber	2023	306 ,292	297 ,422	8,87 0	2.8	3.1
Sep temb er	2023	304 ,455	295 ,474	8,98 1	2.9	3.1
A ugu st	2023	308 ,422	298 ,682	9,74 0	3.1	3.4

EXHIBIT 5:
Unemployment Rates
to July 2024

Percent



Source(s): US Bureau of Labor Statistics/Haver Analytics.
Note(s): Data are seasonally adjusted.

575,882

Population (2023)

Population **grew by 18,527** over the last 5 years and is projected to **grow by 16,476** over the next 5 years.

261,202

Total Regional Employment

Jobs **decreased by 5,884** over the last 5 years but are projected to **grow by 16,589** over the next 5 years.

\$85.2K

Avg. Earnings Per Job (2023)

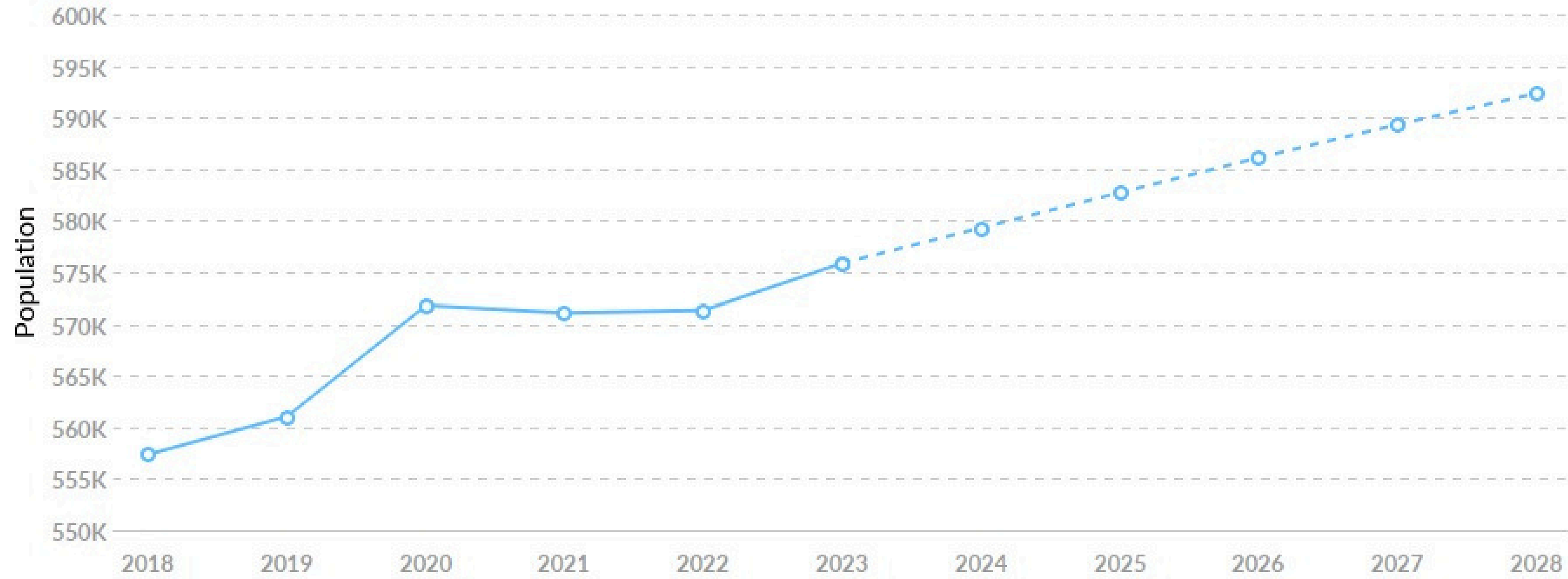
Regional average earnings per job are **\$1.9K above** the national average earnings of \$83.3K per job.



South Shore Workforce Board

October 2024

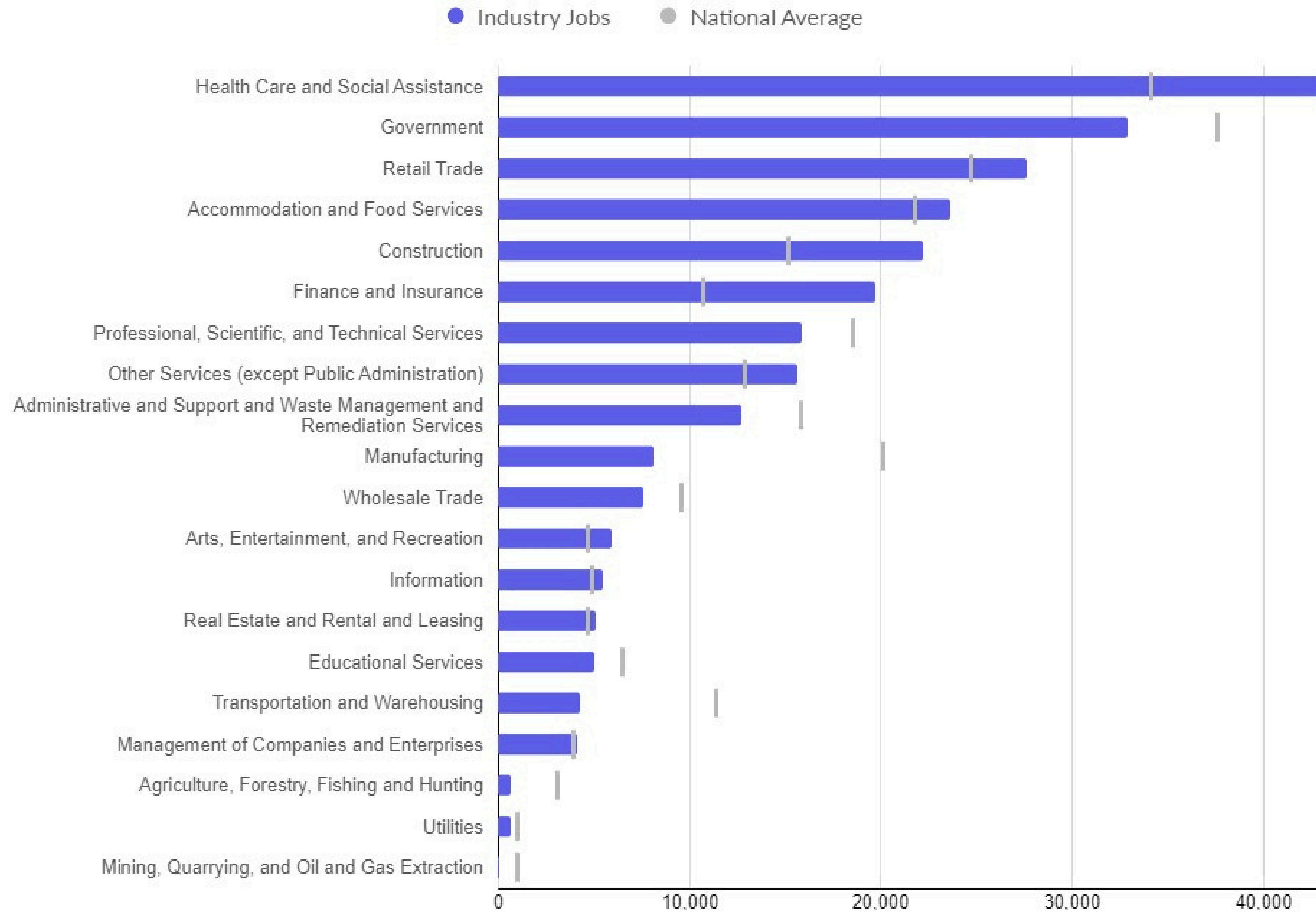
South Shore SDA Population



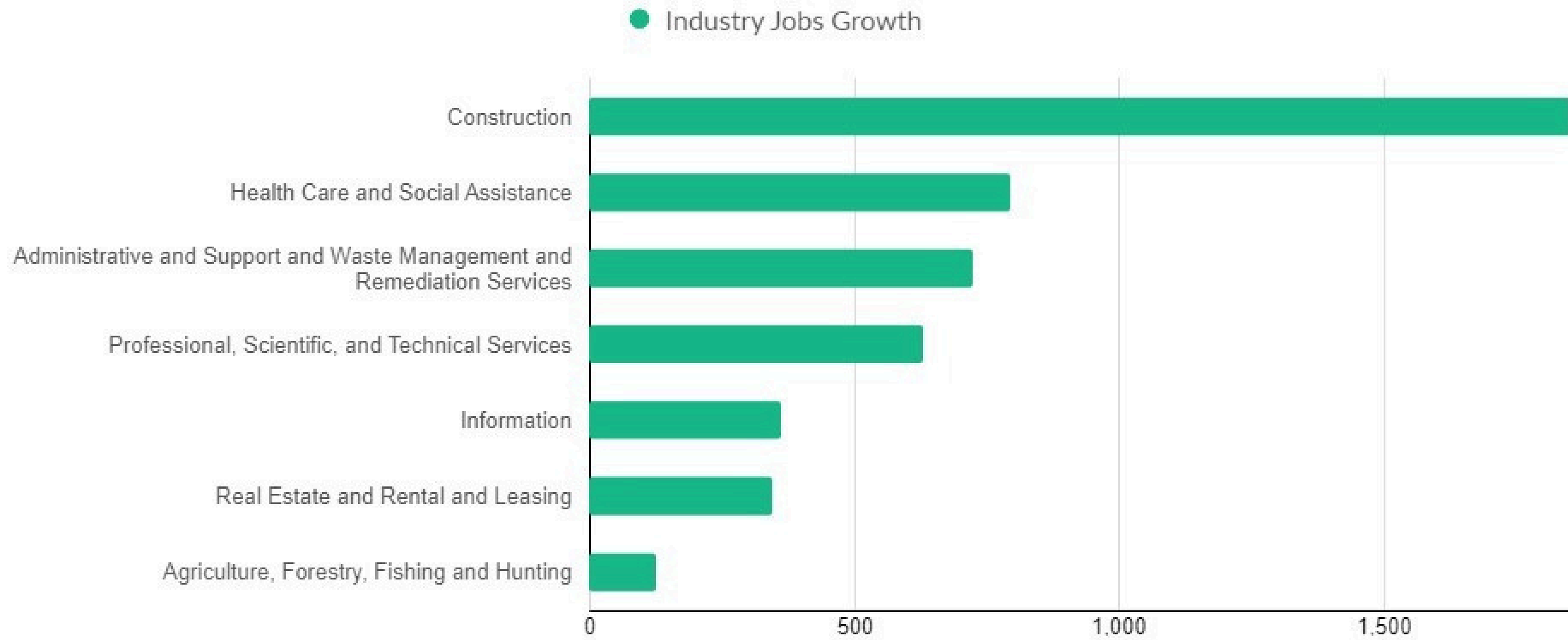
South Shore Workforce Board

October 2024

Largest Industries

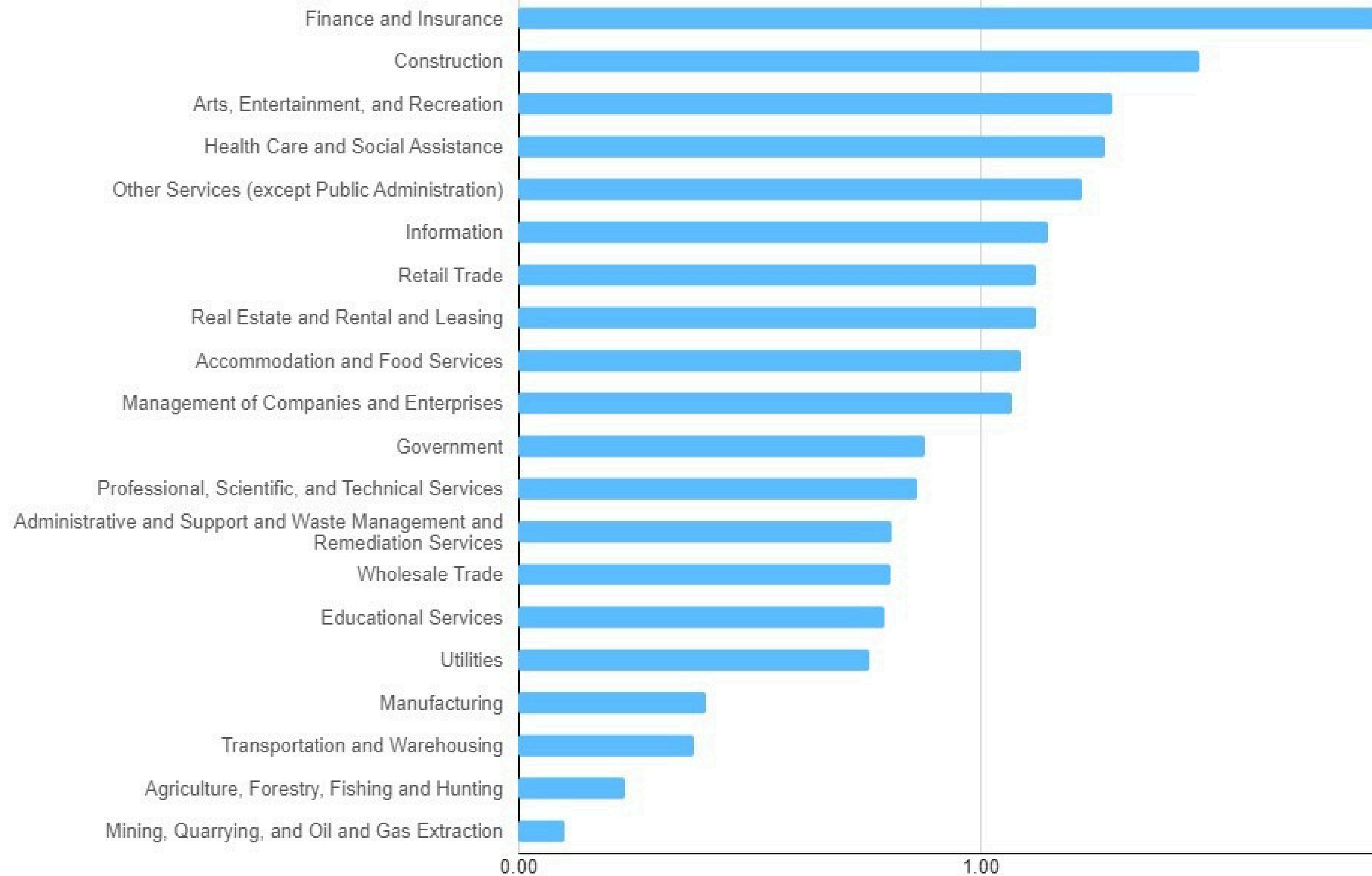


Top Growing Industries

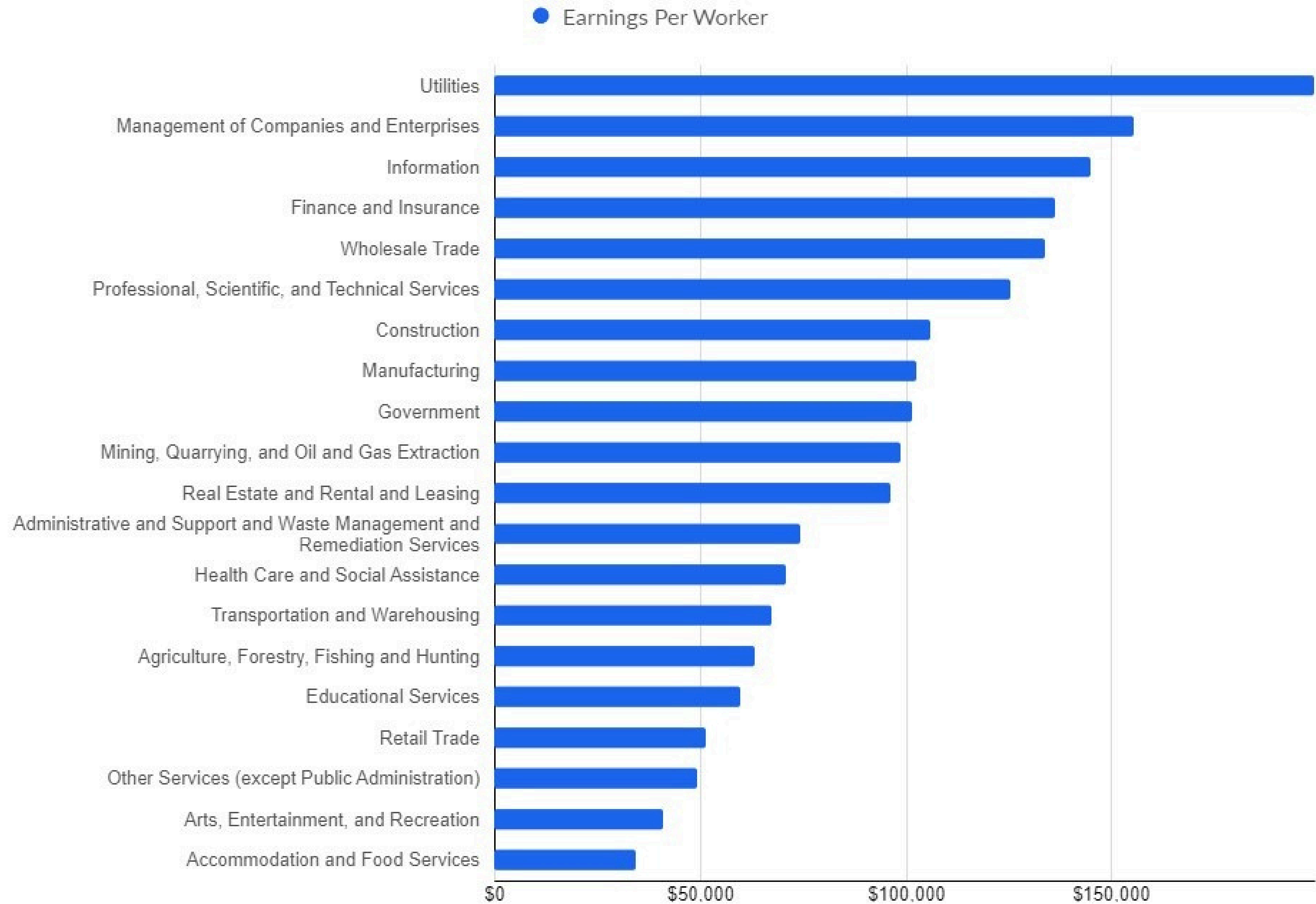


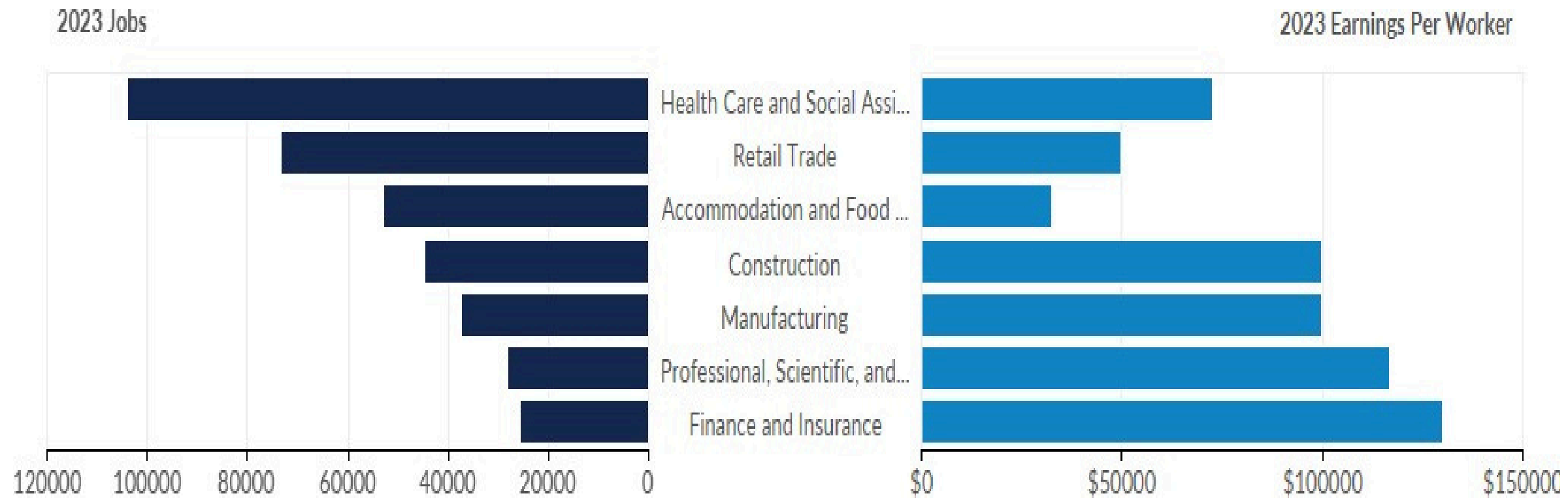
Top Industry Employment Concentration

● Industry Employment Concentration

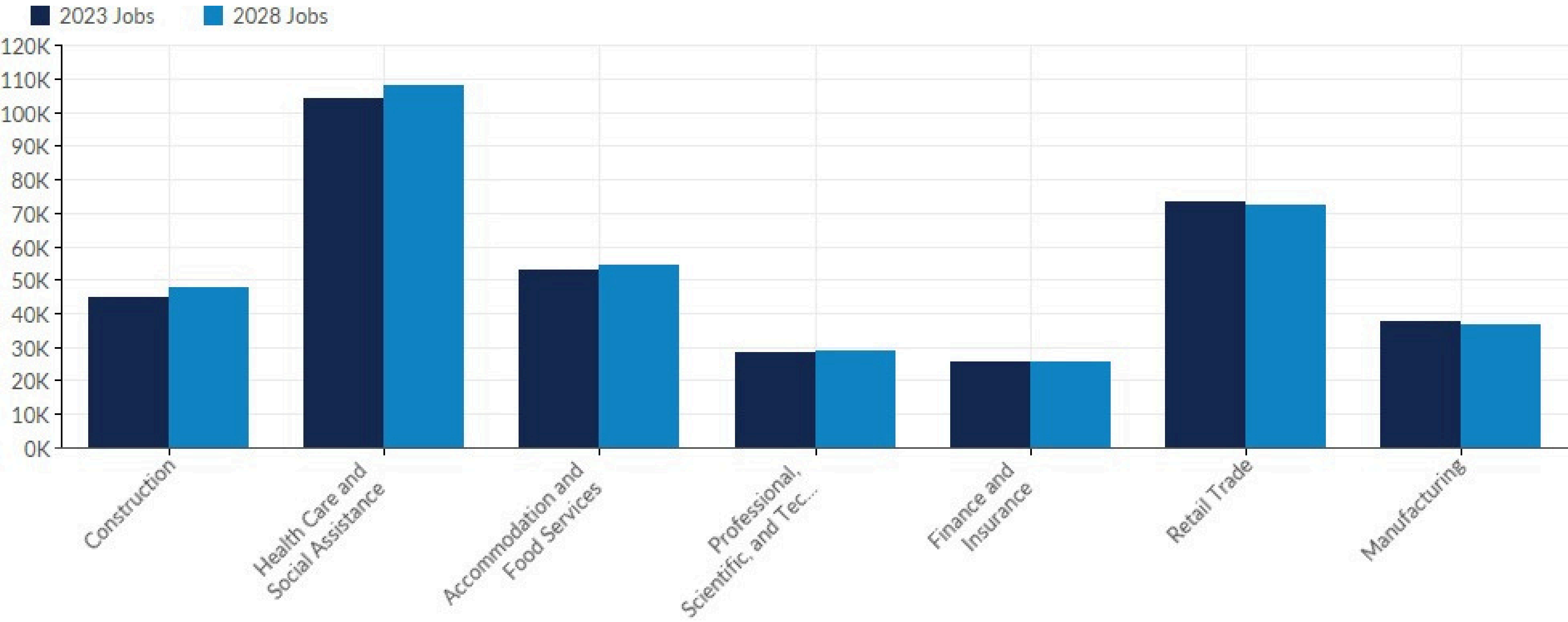


Top Industry Earnings

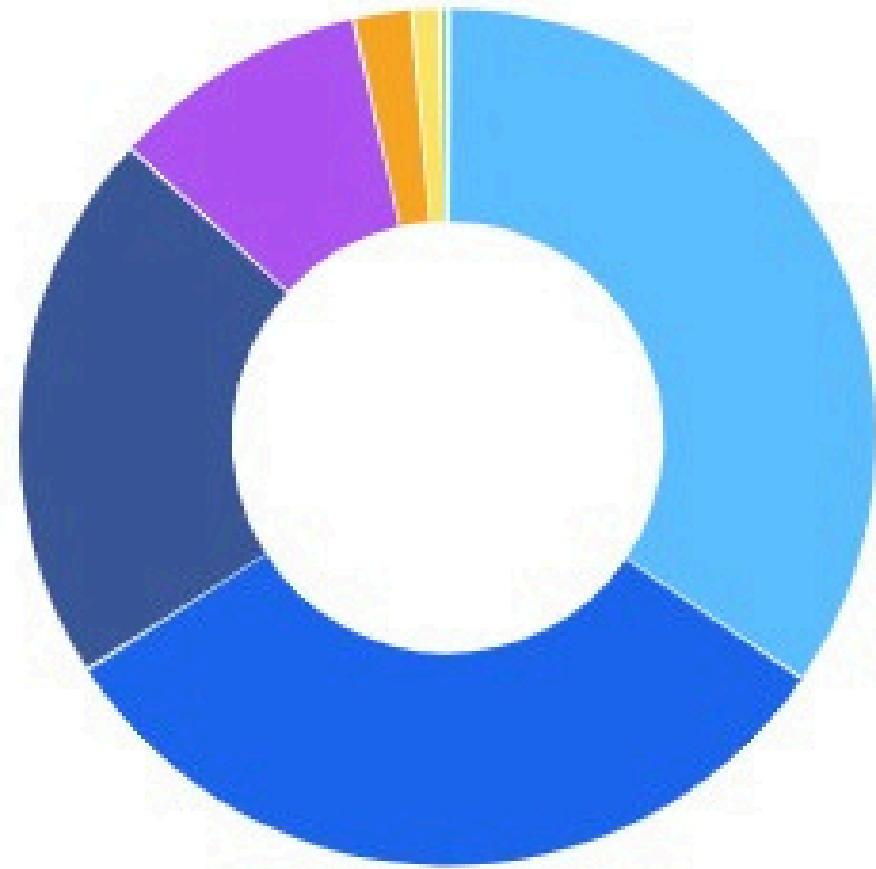




Group	2023 Jobs	2028 Jobs	Earnings Per Worker
Health Care and Social Assistance	103,912	107,846	\$72,386
Retail Trade	73,425	72,436	\$49,823
Accommodation and Food Services	52,849	54,336	\$32,366
Construction	44,798	47,530	\$99,561
Manufacturing	37,515	36,595	\$99,614
Professional, Scientific, and Technical Services	28,224	28,878	\$116,799
Finance and Insurance	25,631	25,502	\$129,808



Business Size



	Percentage	Business Count
● 1 to 4 employees	34.4%	9,011
● 5 to 9 employees	31.4%	8,214
● 10 to 19 employees	20.8%	5,454
● 20 to 49 employees	9.7%	2,543
● 50 to 99 employees	2.2%	580
● 100 to 249 employees	1.0%	272
● 250 to 499 employees	0.2%	64
● 500+ employees	0.1%	28

**Business Data by DatabaseUSA.com is third-party data provided by Lightcast to its customers as a convenience, and Lightcast does not endorse or warrant its accuracy or consistency with other published Lightcast data. In most cases, the Business Count will not match total companies with profiles on the summary tab.*

Occupation Title	Employment 2022	Percent Change	Annual Openings	Typical education needed for en2023	Mean Wage
Nurse Practitioners	449	55.01%	51	Master's degree	\$142,289
Physical Therapist Assistants	230	33.04%	44	Associate's degree	\$73,037
Occupational Therapy Assistants	120	32.50%	23	Associate's degree	\$71,500
Medical and Health Services Mana	1,078	31.54%	121	Bachelor's degree	\$140,892
Cooks, Restaurant	2,689	30.31%	545	No formal educational credentia	\$44,061
Physician Assistants	219	30.14%	20	Master's degree	\$145,051
Speech-Language Pathologists	325	28.62%	34	Master's degree	\$100,179
Data Scientists	358	26.82%	104	No formal educational	\$116,989
Massage Therapists	291	24.74%	186	High school diploma or	\$66,572
Substance Abuse, Behavioral Disor	896	24.67%	1,451	High school diploma or	\$60,196
Exercise Trainers and Group Fitnes	806	24.57%		equivale	\$56,034
Home Health and Personal Care Ai	7,683	24.34%			\$38,706
Coaches and Scouts	459	23.53%			\$69,292
Light Truck Drivers	1,443	20.86%	75	Bachelor's degree	\$49,168
Educational, Guidance, and Career	451	19.96%	195	High school diploma or equivale	\$85,898
Substitute Teachers, Short-Term	427	19.67%	44	Master's degree	\$42,456
Telecommunications Equipment In	342	19.30%	64	Bachelor's degree	\$75,505
Tutors	404	19.06%	44	Postsecondary non-degree awar	\$70,173
Refuse and Recyclable Material Co	106	18.87%	82	High school diploma or equivale	\$56,025
Teachers and Instructors, All Other	149	18.79%	16	No formal educational credentia	\$80,597
Telecommunications Line Installer	474	18.78%	22	Bachelor's degree	\$92,291
Occupational Health and Safety Sp	135	18.52%	55	High school diploma or equivale	\$93,898
Actuaries	103	18.45%	17	Bachelor's degree	\$127,889
Physical Therapists	673	18.43%	8	Bachelor's degree	\$98,671
Self-Enrichment Teachers	695	17.70%	40	Doctoral or professional degree	\$65,055
Lifeguards, Ski Patrol, and Other R	188	17.55%	102	High school diploma or equivale	\$35,629
Diagnostic Medical Sonographers	211	17.54%	63	No formal educational credentia	\$102,821
Education Administrators, Kinderg	594	17.34%	15	Associate's degree	\$130,659
Operations Research Analysts	204	17.16%	53	Master's degree	\$94,303
School Psychologists	158	17.09%	17	Bachelor's degree	\$108,065
Industrial Machinery Mechanics	247	17.00%	14	Doctoral or professional degree	\$73,433
Secondary School Teachers, Excep	2,154	16.99%	25	High school diploma or equivale	\$86,125
			180	Bachelor's degree	

Figure 1: Wage Inflation



Notes: The figure shows year-over-year growth rates for average hourly earnings, the Employment Cost Index (ECI), and the Indeed Posted Wages. During the COVID-19 pandemic and the early part of the recovery after the pandemic, industry composition effects played a large role in driving changes in average hourly earnings. For this reason, values during this period (represented by the dashed blue line) may provide less information about actual wage pressures. Compositional effects are, by construction, not present in the ECI. (The shaded area denotes the pandemic-related recession.)

Sources: US Bureau of Labor Statistics (average hourly earnings and ECI) and Indeed (Indeed Wage Tracker).

Price Growth Has Outpaced Growth of Unit Labor Costs

EXHIBIT 9:

Consumer Price Index to July 2024

Percentage Change (Year over Year)



Source(s): US Bureau of Labor Statistics/Haver Analytics.

Note(s): First data point after a year label represents January of that year. Gray bar(s) indicates recession(s).

EXHIBIT 10:

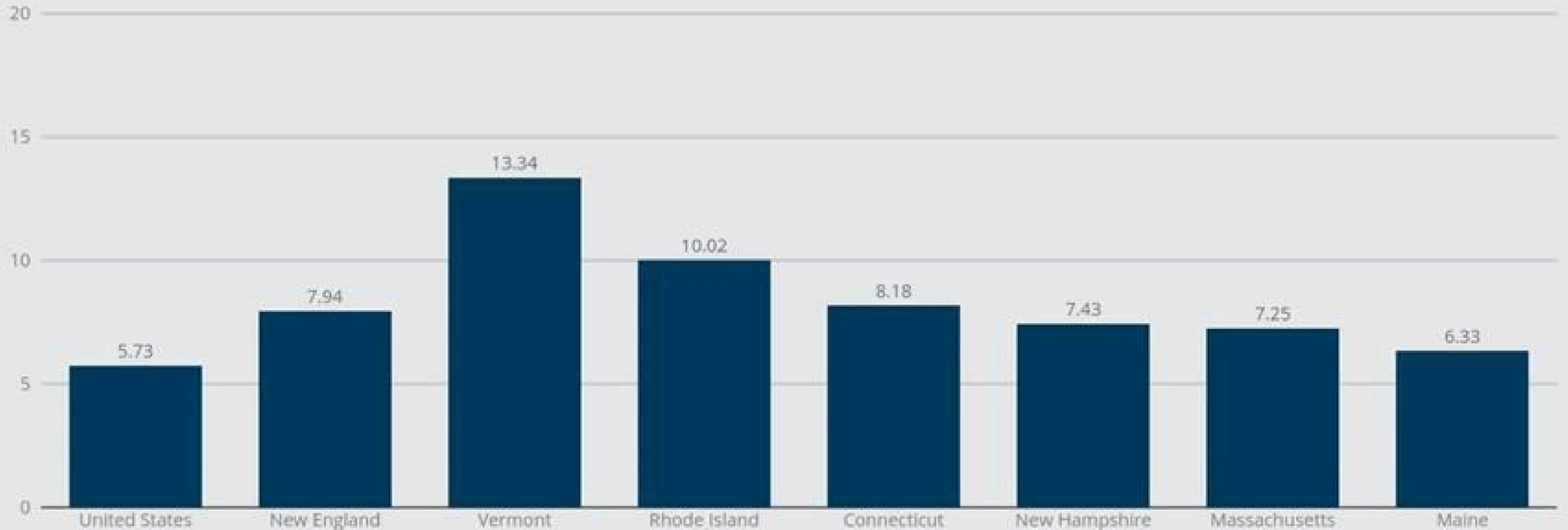
Percentage Change in Consumer Prices

to July 2024

	United States (%)		New England (%)	
	Last Month June 2024	Last Year July 2023	Last Month June 2024	Last Year July 2023
All Items	0.1	2.9	-0.3	3.5
All, Less Food/Energy	0.1	3.2	-0.6	3.9
Shelter	0.3	5.1	-0.9	7.1
Fuel & Utilities	0.1	4.1	1.9	5.7
Medical	-0.2	3.2	-1.4	5.0
Food	0.3	2.2	0.2	1.3
Recreation	0.1	1.4	-0.2	0.8
Transportation	-0.1	1.0	-0.5	0.4
Education	0.2	0.9	0.2	-0.1

Source(s): US Bureau of Labor Statistics/Haver Analytics.

EXHIBIT 11:
House Prices (FHFA Purchase-only)
to 2024:Q2
Percentage Change (Year-over-Year)



Source(s): Federal Housing Finance Agency/Haver Analytics

ECONOMIC DEVELOPMENT - PROJECTS ON THE DOCKET

ONGOING & PROPOSED EDA PROJECTS

- Avon Sewer Ext. Design (\$2.6ML) \$1.3ML EDA, Proposed – Winter, 2024
- Regional Commercial/Industrial Park Site Inventory Study, (\$150K) EDA, Underway
- Plymouth Holtec Master Plan: 1,500-acre vacant portion, fr. Nuclear Power plant site (\$335K), EDA, Received formal award, Underway
Town recently contracted with Saskia to prepare master plan
- EDA – Success Story Highlight Article, Underway

Other Economic Development Projects

- East Bridgewater, Business Assistance Project (\$153K), Underway
- EPA Brownfields Assessment Grant, Verdantas LLC contracted (\$500K), Underway

